

AMB9 – Reworking Brake Booster (Recall Campaign)

Vehicle Type: **Taycan (Y1A)/Taycan 4S (Y1A)/Taycan Turbo (Y1A)/Taycan Turbo S (Y1A)
Taycan 4S Cross Turismo (Y1B)**

Model Year: **As of 2020 up to 2021**

Concerns: **Brake booster**

Information: **On the affected vehicles, the screw of the brake booster's pressure input rod may not have been connected according to specifications.**

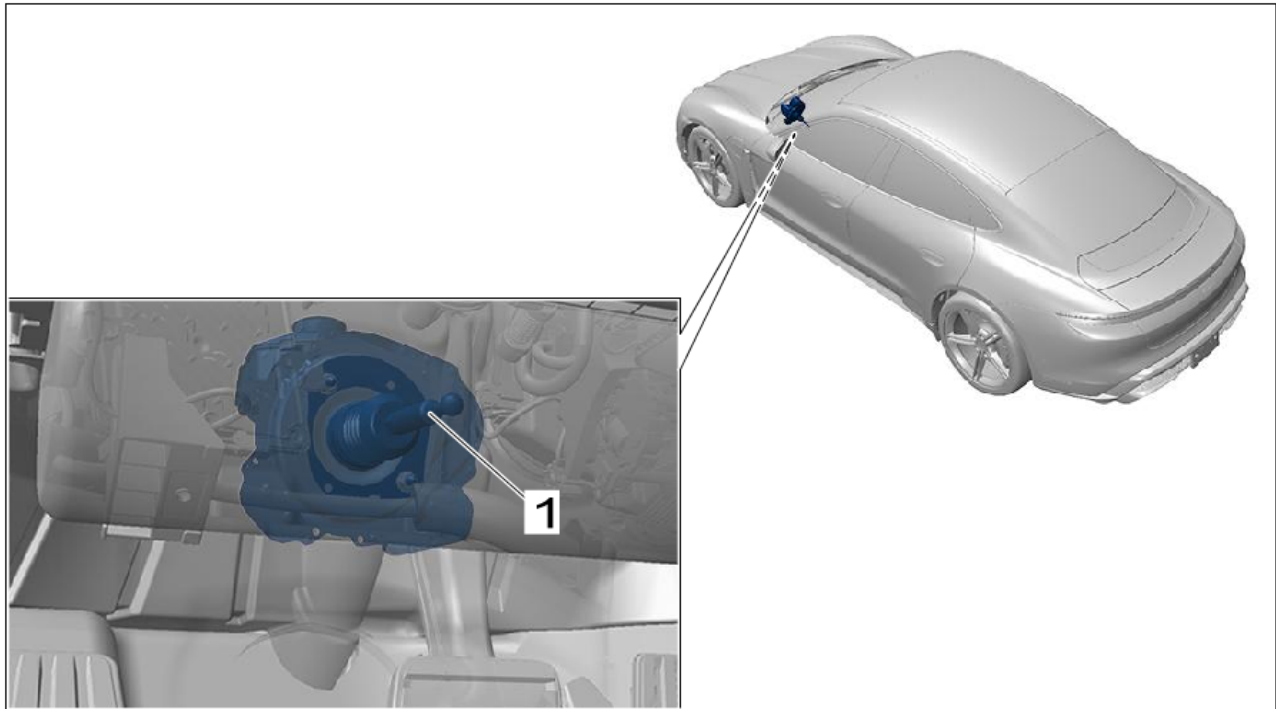
As a result, the pressure input rod may become loose from the brake booster over the vehicle's service life. If the pressure input rod is loose, the vehicle cannot be braked using the brake pedal. The emergency brake function via the electric parking brake is still available however without restrictions.

Action required: Rework the brake booster.

Affected Vehicles: Only vehicles assigned to the campaign (see also PCSS Vehicle Information).

Installation

Position:



Installation position of brake booster

1 – Brake booster (**reworking**)

Required tools

- Tools:
- Marker pen
 - Open-ended wrench a/f 7
 - Open-ended wrench a/f 16
 - Torque wrench, 6-50 Nm (4.5-37 ftlb.), e.g. **VAG 1331A Torque wrench, 6-50 Nm (4.5-37 ftlb.)**
 - Open-ended wrench attachment, for torque wrench a/f 16 (This tool will **only** be auto-shipped to affected dealers by this campaign)

Preparatory work

- Work Procedure: 1 Set driver seat to rearmost position.
- 2 Place steering wheel in upper position.
- 3 Remove cover under dashboard (driver's side). ⇒ *Workshop Manual '70191901 Removing and installing trim panel for dashboard (driver's side)'*

Reworking brake booster

Work

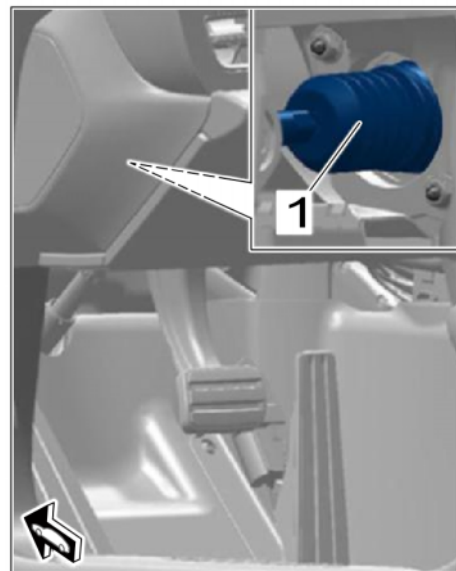
Procedure:



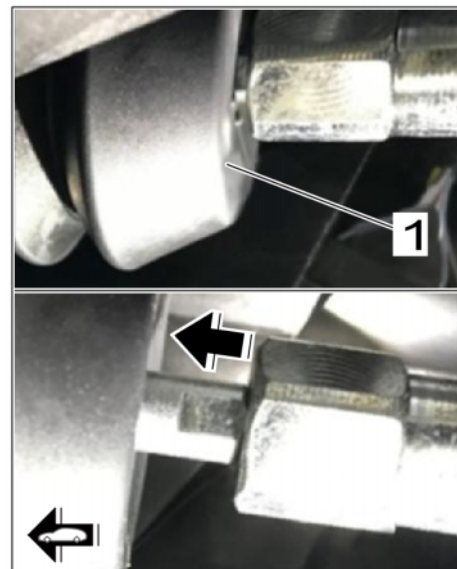
Information

Do not pull on or put pressure on the brake pedal while working on the brake booster pressure input rod.

- 1 Carefully press the dust glove on the pressure input rod ⇒ *Installation location of dust glove on pressure input rod -1-* back by approx. 1 cm/ 0.39 in with your hand ⇒ *Pressure input rod dust glove -Arrow-*.

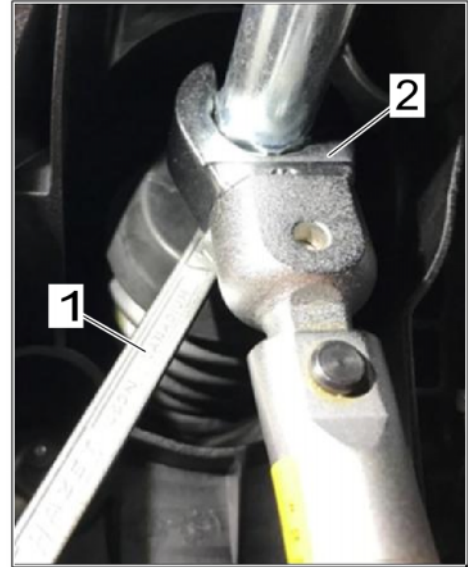


Installation location of dust glove on pressure input rod



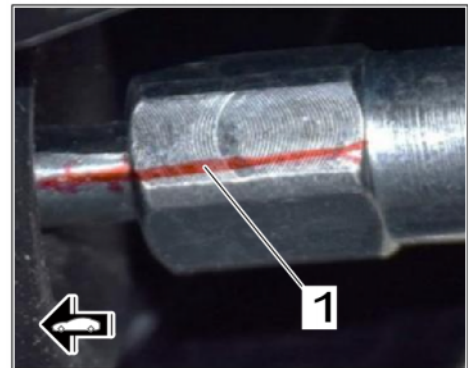
Pressure input rod dust glove

- Carefully pull on screw connection for the pressure input rod using open-ended wrench a/f 7 ⇒ *Screw connection for pressure input rod-1-* and torque wrench using open-ended wrench attachment a/f 16 ⇒ *Screw connection for pressure input rod-2-*. torque 10 Nm (7.5 inch)



Screw connection for pressure input rod

- Mark both sides of the screw connection with a continuous line ⇒ *Marking on screw connection-1-*.



Marking on screw connection

- 4 Turn the pressure input rod using an open-ended wrench (a/f 16) ⇒ *Pressure input rod -1-* 45 degrees (counterclockwise) ⇒ *Pressure input rod -in direction of arrow-*.



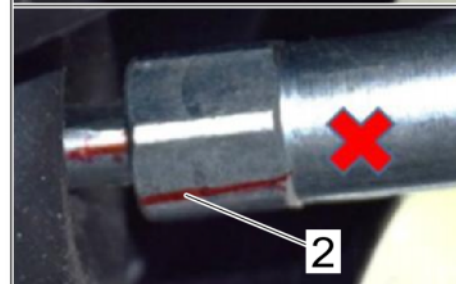
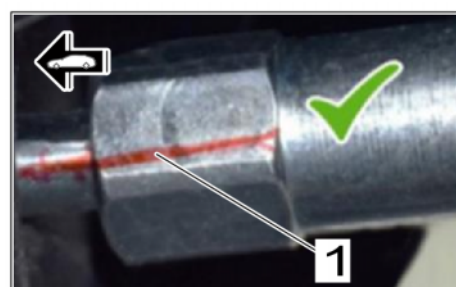
Pressure input rod

- 5 Check that the marking is then still at the same position.
 - 5.1 If the marking is still at the same position ⇒ *Position of marking -1-*, continue with Step 6.
 - 5.2 If the marking is at a different position ⇒ *Position of marking -2-*, repeat the procedure once, starting from Step 2.



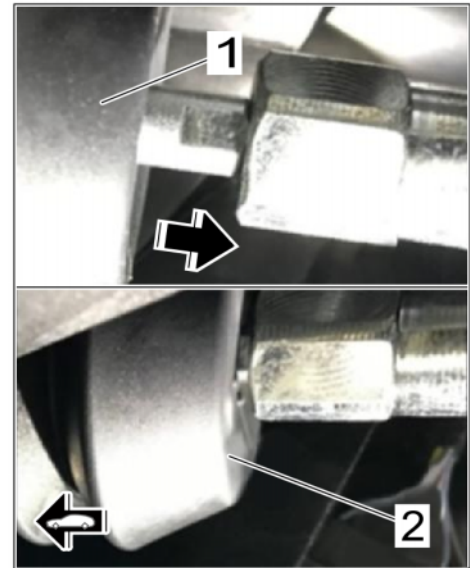
Information

If the screw connection of the pressure input rod can still be turned, replace the brake booster **in consultation with Technical Support**. ⇒ *Workshop Manual '477019 Removing and installing brake booster'*



Position of marking

- 6 Carefully pull the dust glove on the pressure input rod back to ⇒ *Pressure input rod dust glove -1-* its original position with your hand ⇒ *Pressure input rod dust glove -2-*.



Pressure input rod dust glove

Concluding work

- Work Procedure: 1 Install cover under dashboard (driver's side). ⇒ *Workshop Manual '702219 Removing and installing cover under dashboard (driver's side)'*
- 2 Return steering wheel to its original position.
- 3 Return driver seat to its original position.
- 4 Enter the campaign in the Warranty and Maintenance booklet.

Warranty processing

- Scope 1: • Valid for **Taycan (Y1A/Y1B)**

Working time:

Reworking brake booster

Labor time: **44 TU**

Includes: removing and installing cover under dashboard (driver's side)

⇒ **Damage Code AMB9 099 000 1**

Important Notice: Technical Bulletins issued by Porsche Cars North America, Inc. are intended only for use by professional automotive technicians who have attended Porsche service training courses. They are written to inform those technicians of conditions that may occur on some Porsche vehicles, or to provide information that could assist in the proper servicing of a vehicle. Porsche special tools may be necessary in order to perform certain operations identified in these bulletins. Use of tools and procedures other than those Porsche recommends in these bulletins may be detrimental to the safe operation of your vehicle, and may endanger the people working on it. Properly trained Porsche technicians have the equipment, tools, safety instructions, and know-how to do the job properly and safely. Part numbers listed in these bulletins are for reference only. The work procedures updated electronically in the Porsche PIWIS diagnostic and testing device take precedence and, in the event of a discrepancy, the work procedures in the PIWIS Tester are the ones that must be followed.

© 2021 Porsche Cars North America, Inc.