



Condition

ATTENTION:

**THIS IS A TECH TIP, NOT A TECHNICAL BULLETIN.
TECH TIPS ARE NOT ASSOCIATED WITH WARRANTY CLAIMING.**

Applicable Vehicles

Model(s)	Year	Eng. Code	Trans. Code	VIN Range From	VIN Range To
GTI, Golf R	2022	All	All	All	All

Revision Table

Instance Number	Published Date	Version Number	Reason For Update
2065010/2	10/28/21	63-21-02TT	Add Warning to step 4.
2065010/1	10/25/21	63-21-02TT	Original publication.

Technical Background

Temporary assistance for mounting front and rear license plates.

Service

Front License Plate

1. Locate front license plate bracket and locking rivet pin kit.



Figure 1



2. Invert the license plate bracket and mark the center point of the bracket on the lower lip.
3. Identify the center of the front bumper cover by observing the cut out in the lower front grille (Figure 3). Align the center point of the license plate bracket with the molding cutout (Figure 2).



Figure 2

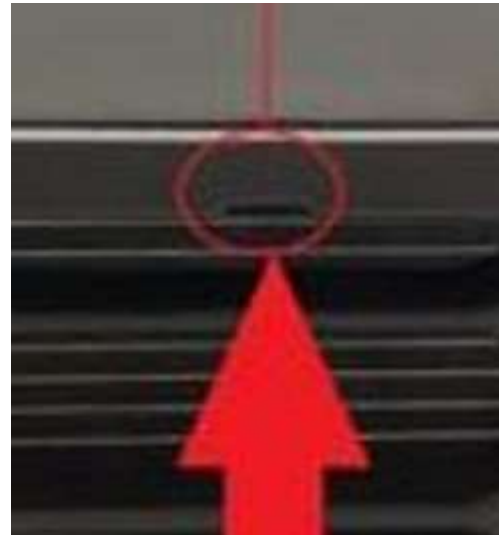


Figure 3

4. Hold the front license plate bracket against the front bumper cover. Pay a close attention to the engagement of the bracket lower lip and center marking (Figure 4).

 WARNING:
The bracket must remain totally flush at the lower lip molding or a false reading may occur for the Front Parking Assist Operation (Figure 4).



Figure 4



5. Mark the front bumper cover through the 4 bracket mounting holes and set the bracket aside (Figure 5).

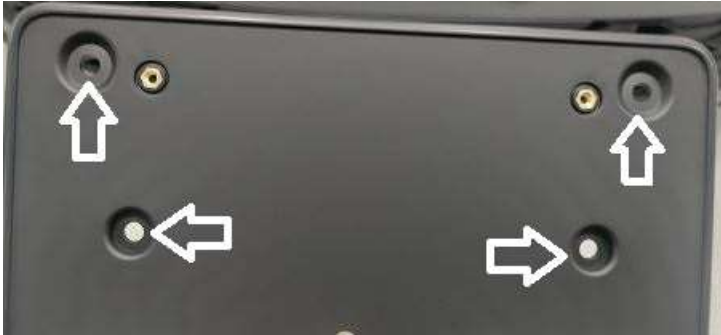


Figure 5

6. Select a drill bit just under the size of the locking rivet pin and using tape, mark it to a depth of 12 mm.

- a. Do not drill the hole larger than the locking rivet pin diameter.

7. Drill the 4 holes where marked in the front bumper cover to a depth of no more than 12 mm.

8. Center and align the license plate bracket and install the 4 locking rivet pins.

9. Install the license plate-to-license plate bracket (Figure 7).



Figure 7

Rear License Plate Installation

1. Align the license plate between Left License Plate Lamp and Right License Plate Lamp (Figure 8).

- a. Make sure the license plate centered on the upper recess.
- b. Make sure the outer edge of the license plate aligned to the outer edge of the Left License Plate Lamp and Right License Plate Lamp.

2. Mark the position of the holes for the license plate on the bumper cover.

3. Using a 3 mm (1/8 in.) diameter drill bit, drill the license plate marks on the bumper cover no deeper than 12 mm.

4. Secure the license plate with self-tapping screws (N 90974701).



Figure 8

Additional Information

© 2021 Volkswagen Group of America, Inc. All rights reserved. Information contained in this document is based on the latest information available at the time of printing and is subject to the copyright and other intellectual property rights of Volkswagen Group of America, Inc., its affiliated companies and its licensors. All rights are reserved to make changes at any time without notice. No part of this document may be reproduced, stored in a retrieval system, or transmitted in any form or by any means, electronic, mechanical, photocopying, recording, or otherwise, nor may these materials be modified or reposted to other sites, without the prior expressed written permission of the publisher.