



SIB 61 08 21

2021-07-21

CIGARETTE LIGHTER IS DIFFICULT TO PULL OUT

MODEL

E-Series	Model Description	Production Date	Affected Option Code
G20	3 Series Sedan	Start of production to June 1 st , 2021	441 Smoker's Package
G22	4 Series Coupe		
G23	4 Series Convertible		
G80	M3 Sedan		
G82	M4 Coupe		

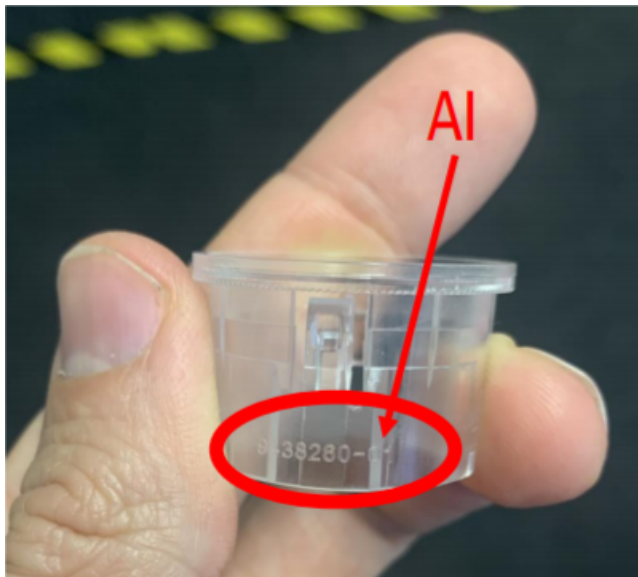
SITUATION

The cigarette lighter is difficult or impossible to pull it out.

CAUSE

Ring light in the center console socket is deformed.

PROCEDURE



Remove the socket and replace the clamping ring with part number

61 34 9438260 Clamping ring for 12 V power socket.

Note: A clamping ring with the revision index (AI) -02 or higher must be installed.

Alternatively, a ring light with part number 61 42 7947770 Ring light without LED can also be used on vehicles without Ambient Lighting.

PARTS INFORMATION

Obtain and confirm the part numbers for your specific vehicle by entering the chassis number in either ETK or AIR which takes into account specific equipment and/or options.

Part Number	Description	Quantity
61 34 9438260	Clamping ring for 12 V power socket.	1
Or		
61 34 7947770	Ring light without LED	1

WARRANTY INFORMATION

Covered under the terms of the BMW New Vehicle Limited Warranty for Passenger Cars and Light Trucks.

Defect Code:	6134013700	12 V socket outlet loose
---------------------	-------------------	---------------------------------

Refer to AIR for the corresponding flat rate unit (FRU) allowance.

Operation	Description	Labor Allowance
51 16 151	Replace (12 V socket clamping ring) front storage compartment (Main work)	Refer to AIR
Or:		
51 16 651	Replace (12 V socket clamping ring) front storage compartment (Plus work)	Refer to AIR

If you are using a Main labor code for another repair, use the Plus code labor operation 51 16 651 instead of 51 16 151.

Based on which one applies to your center, please refer to **SI B01 01 20** or **B01 07 20** for claiming your diagnosis work time, job/repair work time (WT), RO/Claim WT and/or repair explanation procedures, unless otherwise required by State law.

QUESTIONS REGARDING THIS BULLETIN

Technical inquiries	Submit feedback at the top of this bulletin
Warranty inquiries	Please contact the Warranty department by either using the Live Chat that's available in the Warranty Documentation Portal or through IDS by selecting Coverage, Policy, Coding Questions and Mileage Corrections
Parts inquiries	Submit an IDS ticket to the Parts Department