



---

# SERVICE CAMPAIGN BULLETIN

---

Classification: BT21-015	Reference: NTB21-091	Date: September 23, 2021
-----------------------------	-------------------------	-----------------------------

---

## VOLUNTARY SERVICE CAMPAIGN 2022 PATHFINDER; REAR DOOR HINGE BOLT

**CAMPAIGN ID #:** PC841  
**APPLIED VEHICLES:** 2022 Pathfinder (R53)

**Check Service COMM or Dealer Business Systems (DBS)  
National Service History to confirm campaign eligibility.**

### INTRODUCTION

Nissan is conducting this voluntary service campaign, on certain specific model year 2022 Pathfinder vehicles, to replace the rear hinge bolt of both the driver (LH) side and passenger (RH) side rear door lower hinges. This service will be performed at no charge to the customer for parts or labor.

### IDENTIFICATION NUMBER

Nissan has assigned identification number PC841 to this campaign. This number must appear on all communication and documentation of any nature dealing with this campaign.

### DEALER RESPONSIBILITY

Dealers are to repair vehicles falling within range of this campaign that enter the service department. This includes vehicles purchased from private parties, vehicles presented by transient (tourists) owners, and vehicles in a dealer's inventory.

Nissan Bulletins are intended for use by qualified technicians, not 'do-it-yourselfers'. Qualified technicians are properly trained individuals who have the equipment, tools, safety instruction, and know-how to do a job properly and safely. **NOTE:** If you believe that a described condition may apply to a particular vehicle, DO NOT assume that it does. See your Nissan dealer to determine if this applies to your vehicle.

## SERVICE PROCEDURE

1. Open the driver (LH) side front door.

2. Locate the LH side rear door lower hinge (Figure 1).

- The LH side rear door lower hinge is located above the Certification Label.

**HINT:** The Certification Label is only located on the LH side and is not present on the passenger (RH) side.

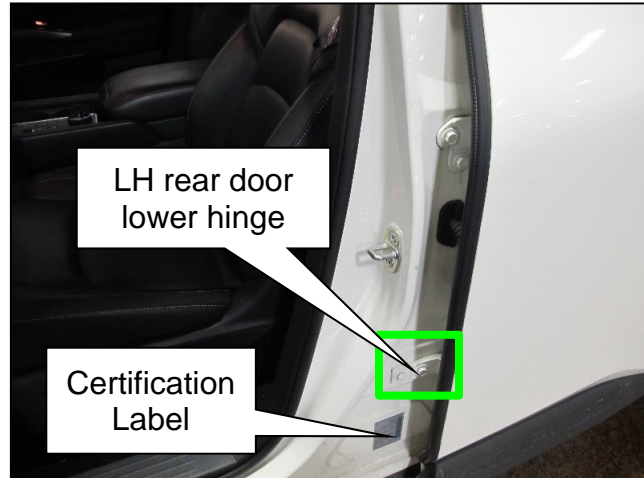


Figure 1

3. Locate the LH side rear door lower hinge bolt, as shown in Figure 2, and remove it.

- Discard this hinge bolt, it will not be reused.

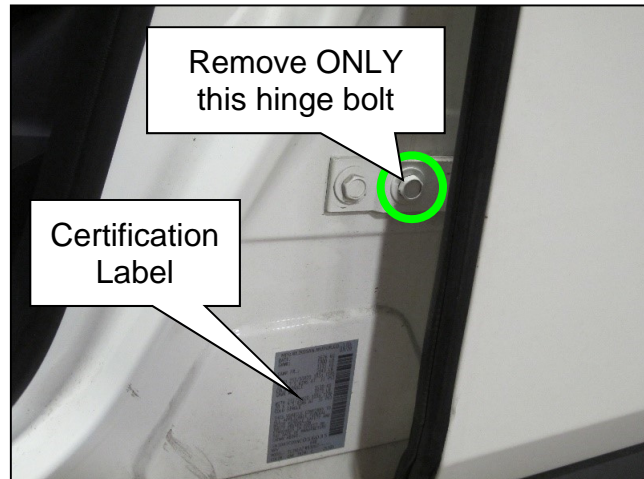


Figure 2

4. Verify the replacement hinge bolt is 30 mm (1.18 in) long from the bottom of the head to the end of the hinge bolt (Figure 3).
  - The replacement hinge bolt will be longer than the original hinge bolt.

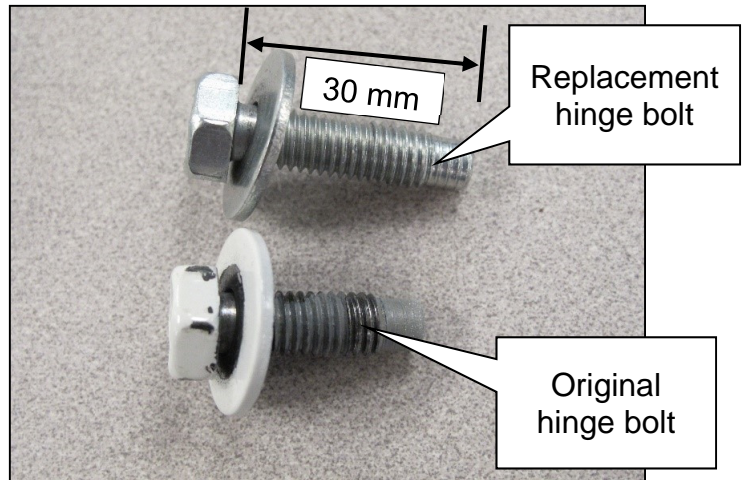


Figure 3

5. Install the replacement hinge bolt.
  - Thread the hinge bolt in by hand to prevent cross threading the hinge bolt (Figure 4).

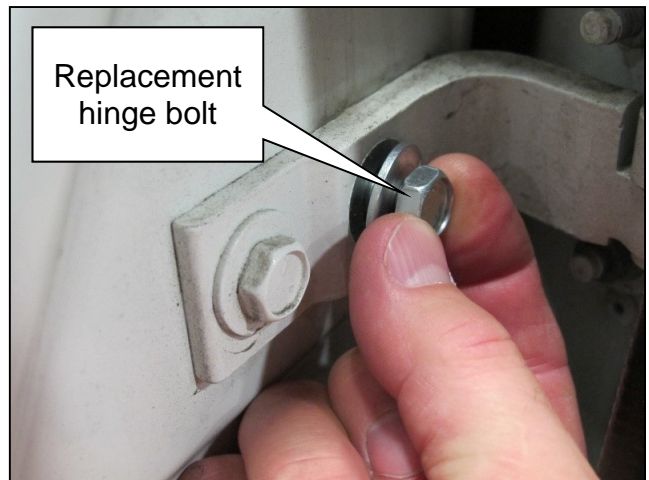


Figure 4

6. Torque the hinge bolt to 29.4 N•m (3.0 kg-m, 22 ft-lbs).



Figure 5

7. Using a clean lint free cloth, clean the replacement hinge bolt head and washer with isopropyl alcohol (Figure 6).

- Allow the isopropyl alcohol to dry before proceeding to step 8.



Figure 6

8. Once the isopropyl alcohol is dry, apply matching color touch-up paint and top coat to the hinge bolt head and washer (Figure 7).

- Follow all instructions included with the touch-up paint and the top coat.
- Allow the color coat to dry for 30 minutes before applying the top coat to the replacement bolt.
- Be careful to not get touch-up paint on the door or the door weather-strip surfaces.
- Make sure to cover all of the replacement hinge bolt head and washer with the paint and top coat.



Figure 7

9. Repeat steps 1 - 8 for the RH side rear door lower hinge bolt.

**PARTS INFORMATION**

DESCRIPTION	PART NUMBER	QUANTITY
BOLT (Hinge bolt)	01121-A8131	2

**EXPENSE CODE**

EXPENSE CODE	DESCRIPTION	MAX AMOUNT
105	Touch-Up Paint	\$22.00

**CLAIMS INFORMATION**

Submit a "CM" line claim using the following claims coding:

CAMPAIGN ("CM") ID	DESCRIPTION	OP CODE	FRT
PC841	Replace Rear Door Lower Hinge Bolts	PC8410	0.2

**AMENDMENT HISTORY**

PUBLISHED DATE	REFERENCE	DESCRIPTION
September 23, 2021	NTB21-091	Original bulletin published

