



# HYUNDAI Technical Service Bulletin

GROUP <b>Campaign</b>	NUMBER <b>21-01-059H</b>
DATE <b>September, 2021</b>	MODEL(S) <b>Palisade (LX2)</b>

**SUBJECT:** C-PILLAR GARNISH INSPECTION AND REPLACEMENT  
(SERVICE CAMPAIGN T6W)

**Description:** Certain 2021MY Palisade (LX2) vehicles may exhibit separation between the C-pillar garnish and the rubber molding. Follow the procedure outlined in this bulletin to inspect the C-pillar garnish, and if necessary, replace it with a new part.



**Applicable Vehicles:** Certain 2021MY Palisade (LX2) vehicles produced from 12/25/2020 – 3/31/2021.

### Parts Information:

PART NAME	PART NUMBER
C-pillar Garnish (LH)	87850-S8000-QQH
C-pillar Garnish (RH)	87860-S8000-QQH

### Warranty Information:

MODEL	OP CODE	OPERATION	OP TIME	CAUSAL PART	NATURE CODE	CAUSE CODE
Palisade (LX2)	10D071R4	C-pillar Garnish Inspection Only	0.2 M/H	87850-S8000-QQH	B12	ZZ2
	10D071R5	C-pillar Garnish Inspection & Replacement (One Side)	0.4 M/H			
	10D071R6	C-pillar Garnish Inspection & Replacement (Both Sides)	0.5 M/H			

**Note 1:** Submit claim on Campaign Claim Entry Screen.

**Note 2:** If a part that is not covered by this campaign is found in need of replacement while performing this Service Campaign and the affected part is still under warranty, submit a separate claim using the same Repair Order. If the affected part is out of warranty, submit a Prior Approval Request for goodwill consideration prior to the repair.

**Service Procedure:**

**C-pillar Garnish Inspection**

1. Inspect the upper end (A) of the C-pillar garnish by applying pressure to the rubber molding.

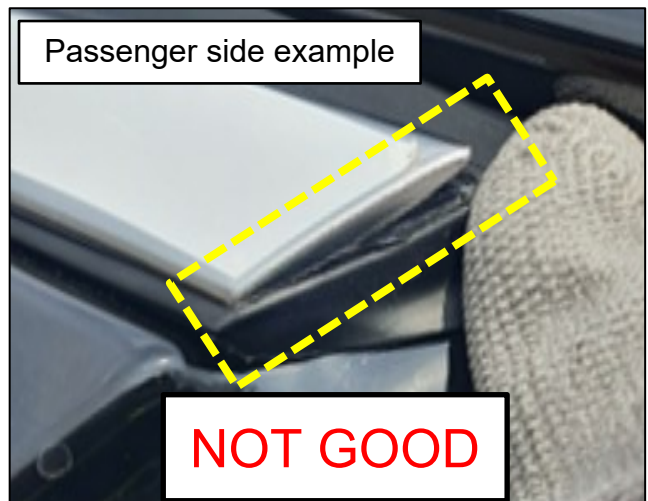
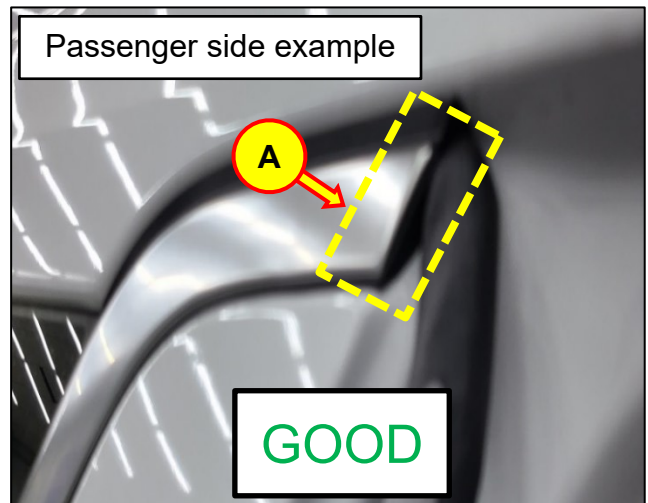
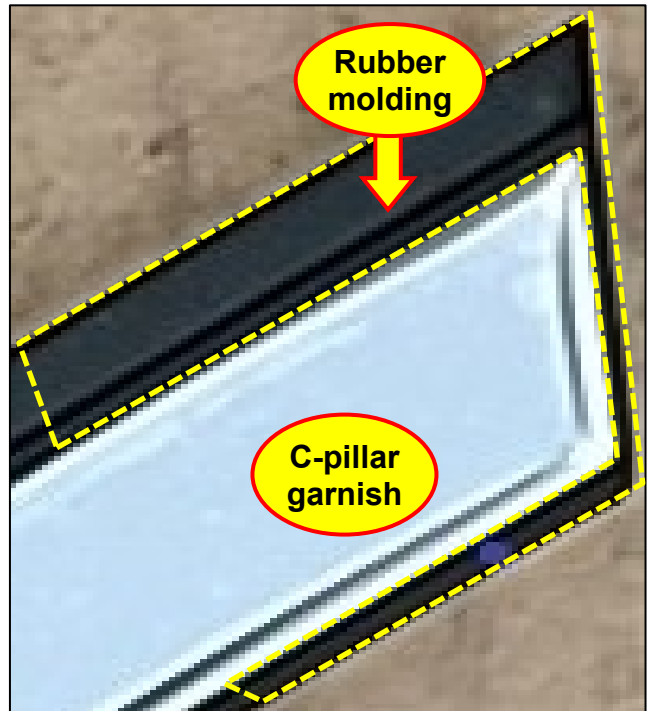
- *GOOD: No separation.*
- *NOT GOOD: Separation between the garnish and rubber molding.*

If the upper end of the garnish is found to be GOOD, proceed to the next step.

If the upper end of the garnish is found to be NOT GOOD, proceed to the C-pillar Garnish Replacement section on page 4 to replace the garnish.

**NOTICE**

The rear doors must be opened to properly inspect the upper end of the C-pillar garnish.

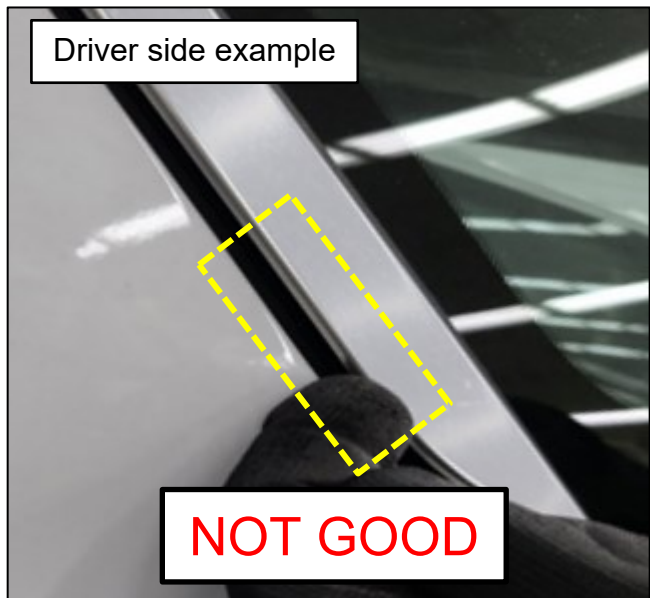
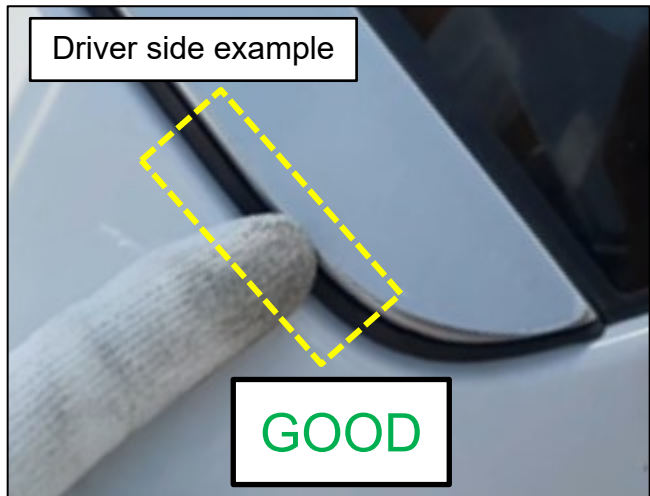
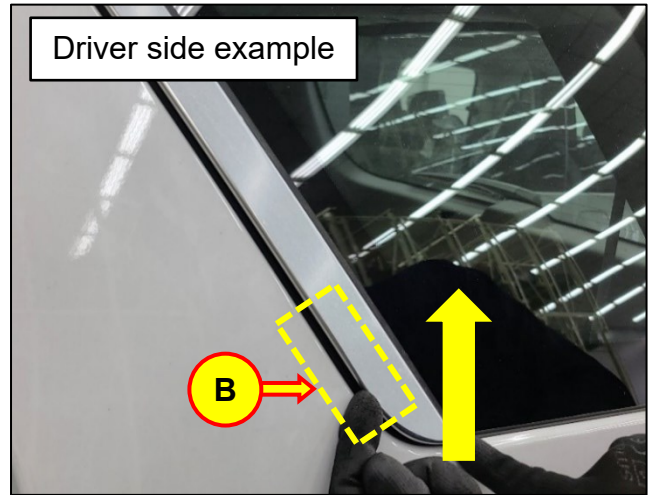


2. Pull up on the lower end of the C-pillar garnish (B) to check for separation between the garnish and the rubber molding.

- *GOOD: No separation.*
- *NOT GOOD: Separation between the garnish and rubber molding.*

If the lower end of the garnish is found to be GOOD, no further action is required.

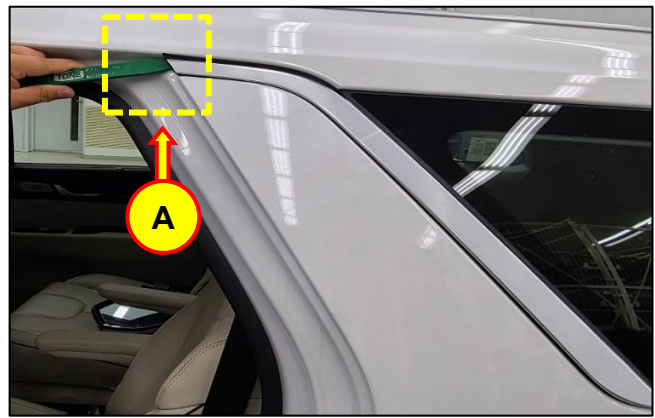
If the lower end of the garnish is found to be NOT GOOD, proceed to the C-pillar Garnish Replacement section on page 4 to replace the garnish.



3. If the C-pillar garnish is found to be GOOD on both the upper and lower ends, no further action is required.
4. Repeat steps 1 & 2 on the opposite side.

**C-pillar Garnish Replacement**

1. Remove the upper end (A) of the C-pillar garnish using a trim remover tool.



2. Remove the rest of the C-pillar garnish.

**CAUTION**

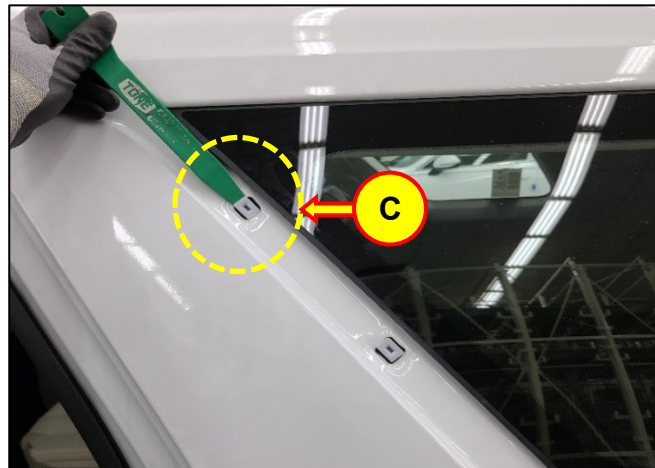
When removing the garnish, be careful not to scratch/damage the paint, body, or fixed quarter glass.



3. Remove the old clips (C) from the body.

**NOTICE**

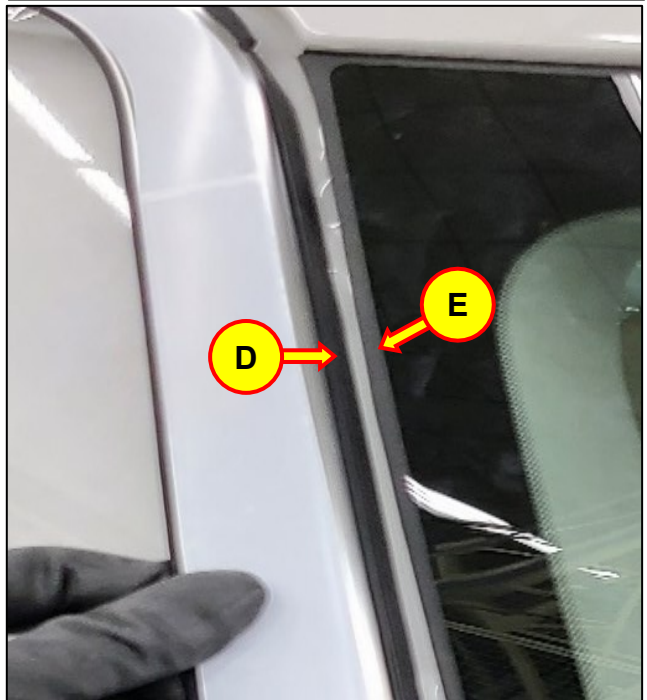
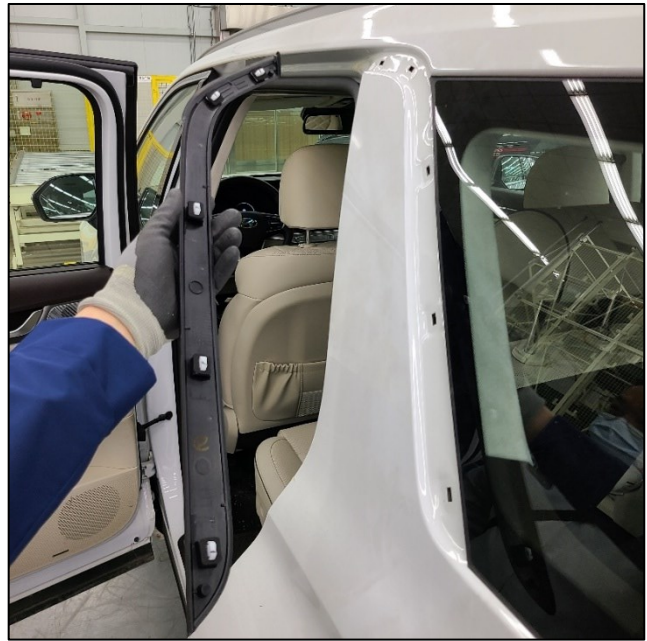
New clips are included with the replacement part. The old clips can be discarded.



4. Install the replacement C-pillar garnish.

**NOTICE**

When installing the garnish, insert the rubber molding (D) under the edge of the fixed quarter glass (E).



5. If necessary, repeat steps 1-4 on the opposite side.
6. The service procedure is now complete.