



QUALITY ACTION

CAMPAIGN BULLETIN Brake Tube Dealer Inventory

Reference: PC826

Date: August 3, 2021

Attention: Dealer Principal, Sales, Service & Parts Managers

Affected Models/Years:	Affected Population:	Dealer Inventory:	SERVICE COMM Activation date:	Stop Sale In Effect
MY2021 Murano (Z52)	NA	346	August 3, 2021	YES

****** Dealer Announcement ******

Nissan is conducting a dealer inventory quality action to inspect the brake tube for contact with the Heating Ventilation and Air Conditioning (HVAC) heat exchanger tube on **346** specific MY2021 Nissan Murano vehicles identified in Service Comm and National Service History – Open Campaigns. During manufacturing, the brake tube may have been bent during tightening, causing it to contact the heat exchanger tube.

Affected vehicles **are subject** to stop sale and are either currently in dealer inventory or assigned and in transit to the dealer.

****** What Dealers Should Do ******

PLEASE FOLLOW THE ATTACHED INSPECTION INSTRUCTIONS:

1. Verify if vehicles are affected by this quality action using Service Comm or DBS National Service History – Open Campaigns I.D. **PC826**
 - New vehicles in dealer inventory can also be identified using DBS (Sales-> Vehicle Inventory, and filter by Open Campaign).
 - Refer to NPSB 15-460 for additional information
 - **Please continue to check newly arriving inventory for campaign applicability.**
2. Please **do not drive, loan, sell or trade** the specific vehicles in dealer inventory subject to this quality action.
3. Use the attached procedure to inspect the brake tube and, if necessary, remedy any vehicles affected by this quality action prior to sale.

Nissan anticipates a low number of affected vehicles will require replacement.

 - Dealers may order parts, if needed, via DBS.
 - Dealers may begin ordering parts via normal parts ordering process on **August 31, 2021.**

NOTE: Parts replaced under this activity will be placed on parts return. Monitor the Warranty Parts Return Website located at NNAnet.com for notifications.

4. Once remedied, dealers should submit the applicable warranty claim for the action performed to close the campaign in Service Comm and release the vehicle for sale.

****** Dealer Responsibility ******

It is the dealer's responsibility to check Service Comm or DBS National Service History - Open Campaign using the appropriate campaign I.D. for the status on each affected vehicle currently in new vehicle inventory.

Thank you for your prompt attention to this matter.

NISSAN NORTH AMERICA, INC.

Aftersales DIVISION

****** Scroll down for attached Repair Instructions ******



PC826 - 2021 MURANO BRAKE TUBE INSPECTION

SERVICE PROCEDURE:

1. Open hood and place protective covering over both fenders (Figure 1).



Figure 1

2. Remove Cowl Top Cover per the Electronic Service Manual (ESM) (Figure 2).
 - BODY EXTERIOR, DOORS, ROOF & VEHICLE SECURITY > EXTERIOR > REMOVAL AND INSTALLATION > COWL TOP > Removal and Installation - Cowl Top Cover

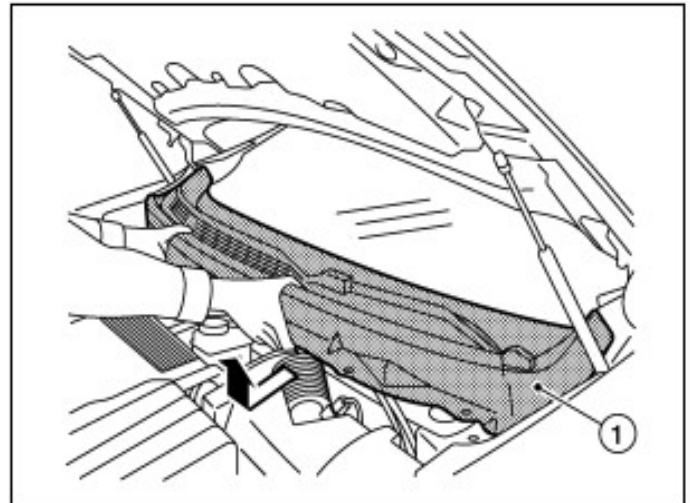


Figure 2

3. Remove the Cowl Top Extension (Figure 3).

- BODY EXTERIOR, DOORS, ROOF & VEHICLE SECURITY > EXTERIOR > REMOVAL AND INSTALLATION > COWL TOP > Removal and Installation - Cowl Top Extension

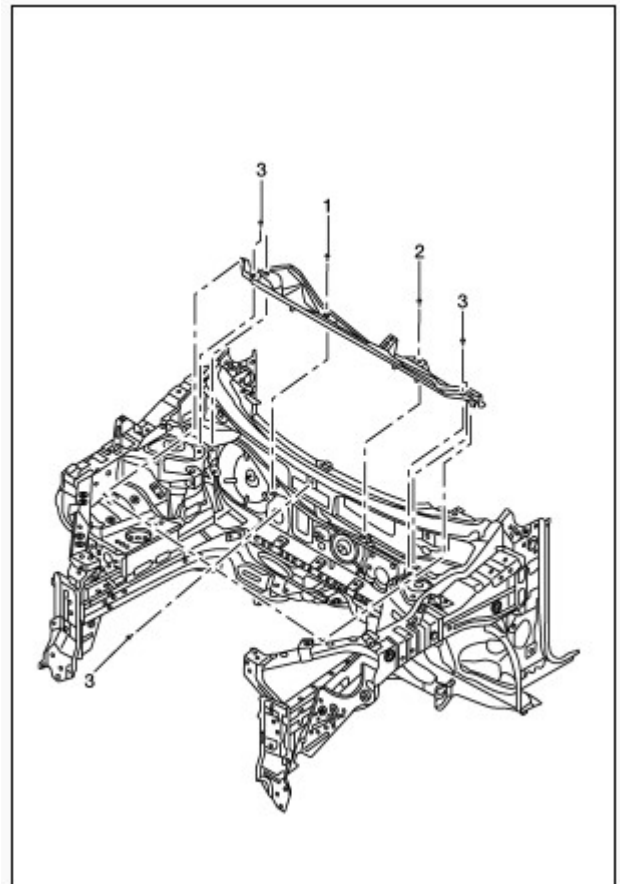


Figure 3

4. Locate HVAC heat exchanger tube and brake tubes. (Figures 4 & 5)



Figure 4

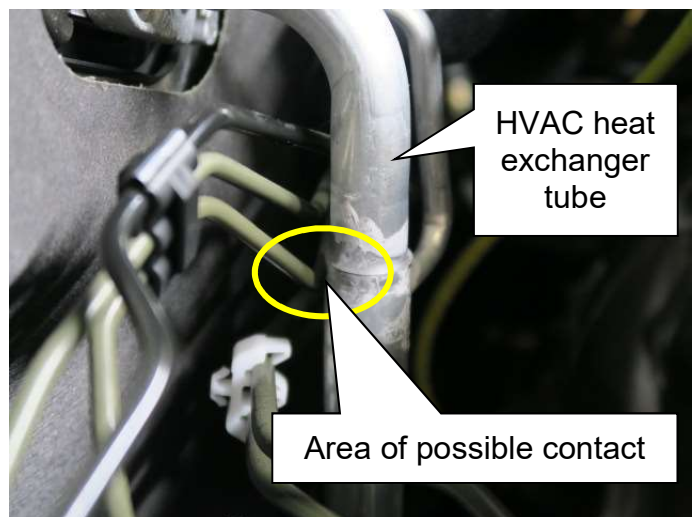


Figure 5

5. Check the gap between the brake tube and the internal heat exchanger. (Figure 7)

- Cutout a 2"x2" square of single wall corrugated cardboard that is approximately 3mm thick as shown in Figure 6
- Insert cardboard cutout between internal heat exchanger tube and brake tube
 - If cardboard moves freely, move to **Step 12** for reassembly and release
 - If cardboard cannot be inserted or if the cardboard makes contact on both sides, move to **Step 6** for further inspection of brake TUBE



Figure 6



Figure 7

6. Loosen brake line nut and clip on the passenger side only. (Figure 8)

- DO NOT remove line, loosen enough to inspect line only
- Move to **Step 7** for inspection of the brake tube

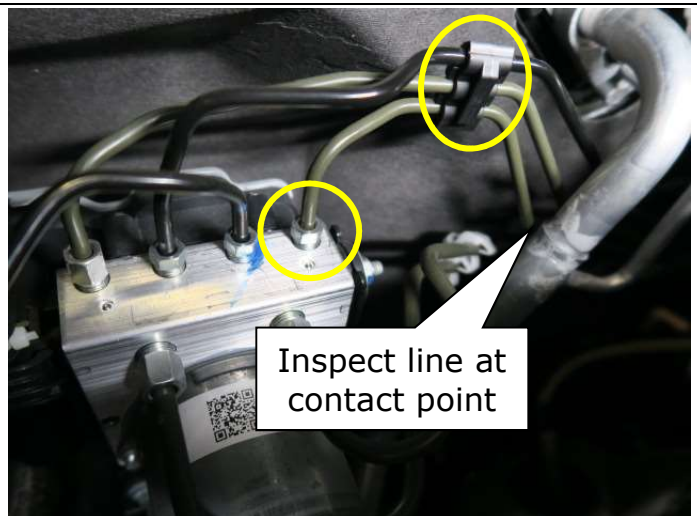


Figure 8

CAUTION

- Do not spill or splash brake fluid on painted surfaces. Brake fluid may seriously damage paint. Wipe it off immediately and wash with water if it gets on a painted surface.

7. Inspect brake tube for wear damage.

- Move brake tube toward the rear of the vehicle and visually inspect the brake tube
- If brake tube has any wear (Figure 9 & 10), move to **Step 8** for replacement
- If brake tube does not have wear, adjust the brake tube to heat exchanger tube clearance to a minimum of 3mm and torque the nut to **16.2 N·m (1.7 kg·m, 12 ft-lb)** and repeat **Step 5** to verify 3mm gap minimum clearance and move to **Step 11**

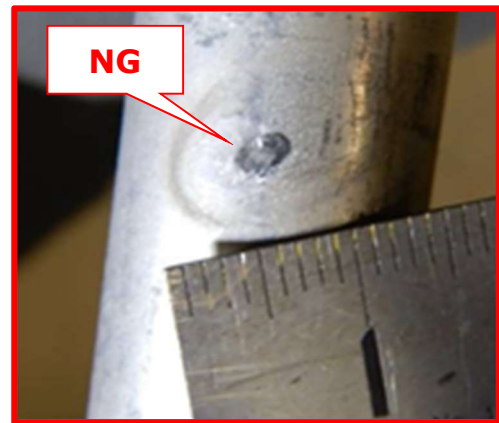


Figure 9

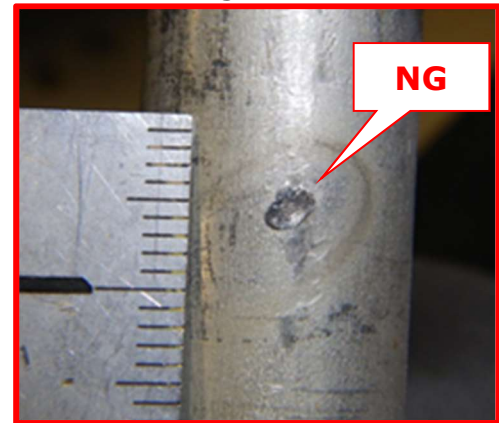


Figure 10

Note: Do not remove the brake tube. Inspect the brake tube while the part is in the vehicle. Figure 9 was taken with the part out of the vehicle as a reference only.

8. Disconnect brake tube on driver's side and remove the brake tube from the vehicle. (Figure 11)

- Clean any spilled brake fluid

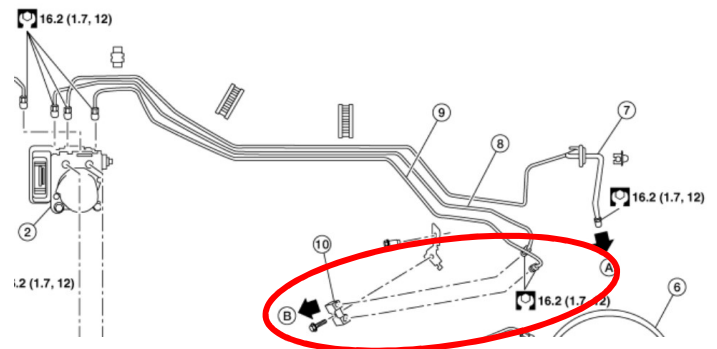


Figure 11

CAUTION

- Do not spill or splash brake fluid on painted surfaces. Brake fluid may seriously damage paint. Wipe it off immediately and wash with water if it gets on a painted surface.

9. Install new brake tube and verify there is no contact between brake tube and internal heat exchanger.

10. Torque each side to **16.2 N·m (1.7 kg-m, 12 ft-lb)** and verify 3mm gap clearance.

- Repeat **Step 5** to verify there is at least a 3mm gap between the brake tube and internal heat exchanger

11. Bleed the brakes per the ESM and verify brake fluid level in master cylinder is within MIN/MAX range. (Figure 12)

- Bleed brakes per ESM BRAKES → BRAKE SYSTEM → PERIODIC MAINTENANCE → BRAKE FLUID → Bleeding Brake System
- Check brake fluid level in master cylinder and top off if required

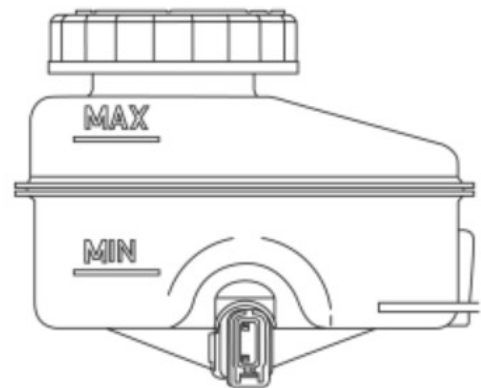


Figure 12

CAUTION

- While bleeding, pay attention to brake fluid level.
- Do not allow reservoir tank to empty as this may cause damage to master cylinder internal components.

12. Reassemble Cowl Top Extension and Cowl Top Cover per the ESM.

- Cowl Top Extension → BODY EXTERIOR, DOORS, ROOF & VEHICLE SECURITY > EXTERIOR > REMOVAL AND INSTALLATION > COWL TOP > Removal and Installation – Cowl Top Extension
- Cowl Top Cover → BODY EXTERIOR, DOORS, ROOF & VEHICLE SECURITY > EXTERIOR > REMOVAL AND INSTALLATION > COWL TOP > Removal and Installation – Cowl Top Cover

PARTS INFORMATION:

Description	Part #	Quantity
TUBE ASSY-BRAKE,REAR	46283-5AA0A	1 (If Needed)
BRAKE FLUID (DOT 3)	999MP-A4100P	1 (If Needed)

CLAIMS INFORMATION:

Submit a "CM" line claim using the following claims coding:

Campaign ("CM") ID	Description:	Op Code	FRT
PC826	Inspect brake tube assembly	PC8260	1.3
	Inspect and replace brake tube assembly	PC8261	1.5