

## Technical product information

<b>Topic</b>	Hands free boot not operating - Open and Close
<b>Market area</b>	Bentley: worldwide (2WBE),Hongkong-Macau (5HK)
<b>Brand</b>	Bentley
<b>Transaction No.</b>	2057730/3
<b>Level</b>	EH
<b>Status</b>	Approval
<b>Release date</b>	

### New customer code

Object of complaint	Complaint type	Position
driver assist systems, convenience features -> automatic open/close function -> automatic opening	functionality -> without function / defect	
body fixtures and fittings -> door, closures operation -> electrically open rear lid	functionality -> cannot be opened	
body fixtures and fittings -> door, closures operation -> open rear lid	functionality -> cannot be opened	
body fixtures and fittings -> door, closures operation -> electrically close rear lid	functionality -> cannot be closed	
body fixtures and fittings -> door, closures operation -> close rear lid	functionality -> cannot be closed	

## Vehicle data

### New Continental Series

#### Sales types

Type	MY	Brand	Designation	Engine code	Gearbox code	Final drive code
3S3*	2020	E		*	*	*
3S3*	2021	E		*	*	*
3S3*	2022	E		*	*	*
3S4*	2020	E		*	*	*
3S4*	2021	E		*	*	*
3S4*	2022	E		*	*	*

## Documents

Document name
<a href="#">master.xml</a>

## Hands free boot not operating - Open and Close

## Customer statement / workshop findings

Hands free boot not operating, the function to open and close the boot does not work

*NOTE: This TPI is only applicable to vehicles which were specified with the hands free boot open/close feature*

## Technical background

Coding for the hands free boot function has not been enabled.

Refer to the Measure section for further information regarding control unit coding changes to Address 46 - Central Module Comfort system - BCM2 (J393)

## Production change

Not applicable

## Measure

Before conducting this procedure the operative MUST ensure the latest ODIS version is loaded onto the applicable diagnostic tester

1) Connect a suitable battery charger to the vehicle - For further information refer to the Repair manual

2) Referring to Figure 1

- Select CAR (Point A)
- Select SETTINGS (Point B)



Figure 1

3) Referring to Figure 2 – Select Vehicle



Figure 2

4) Referring to Figure 3–Select Central locking



Figure 3

5) Once at the screen shown in Figure 4 - Go to step 6 to perform the coding change using ODIS as per the onward instructions



Figure 4

Before conducting the next part of this procedure the operative MUST ensure the latest ODIS version is loaded onto the applicable diagnostic tester

6) Using ODIS- Select and run Guided Fault Finding (GFF)

- Referring to Figure 5 - Select - Test plan (Point A)
- Select own test (Point B)
- Select – Systems with diagnostic capability (Point C)

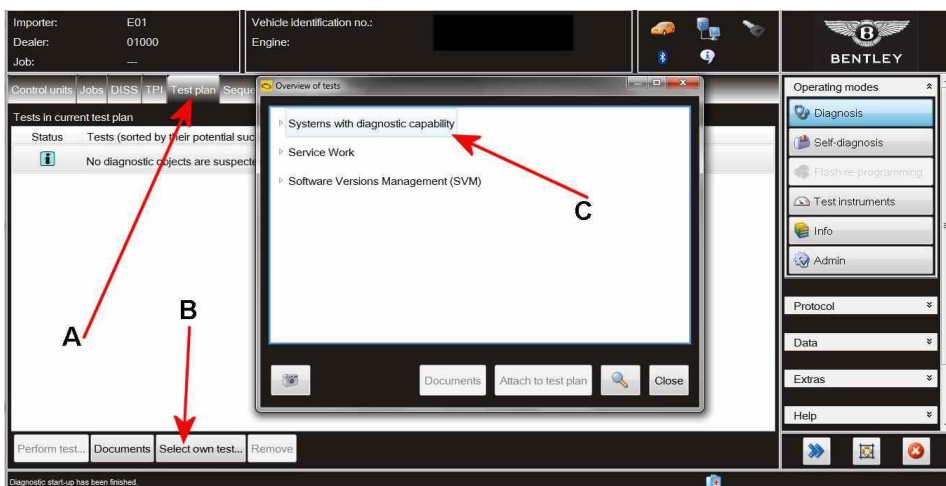


Figure 5

7) Navigate to 0046 – Convenience system central module (Figure 6)

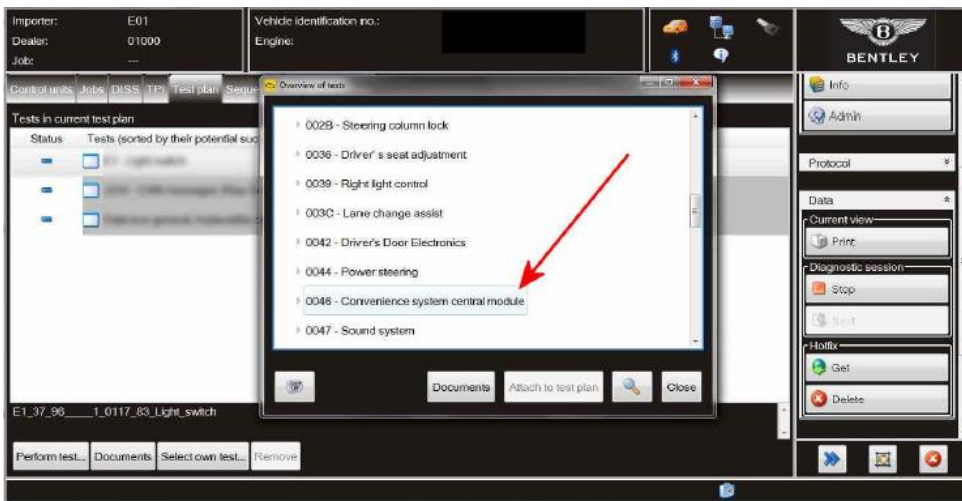


Figure 6

8) Referring to Figure 7

- Open 0046 – Convenience system central module (Point A)
- Open 46 – Subsystems marginal conditions (Point B)

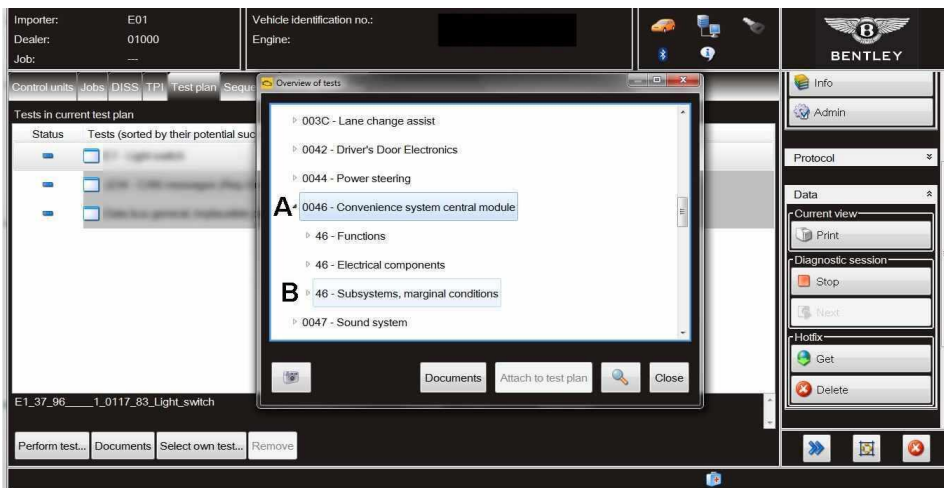


Figure 7

9) Referring to Figure 8 – scroll down to J393 – Enable/disable virtual pedal display status in MMI (Point A)

- Select Attach to test plan (Point B)

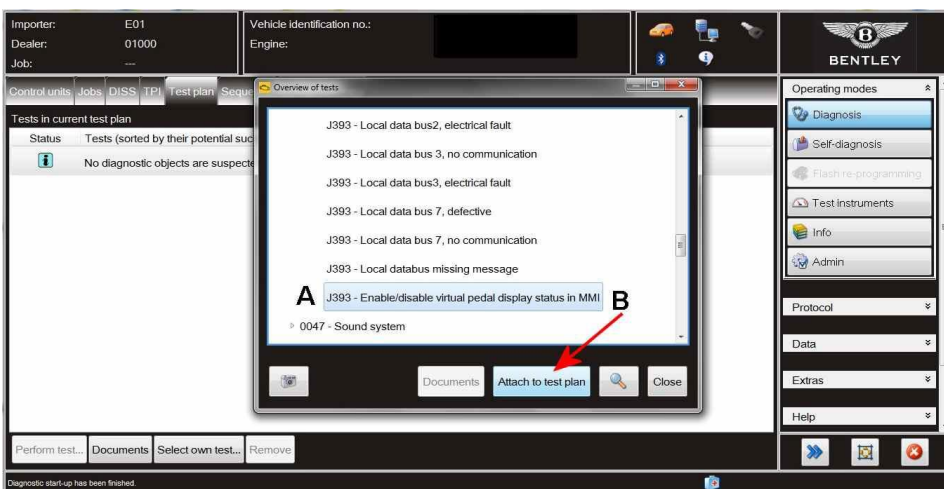


Figure 8

10) Referring to Figure 9 - Select the test shown (Point A)

- Select Perform test (Point B)

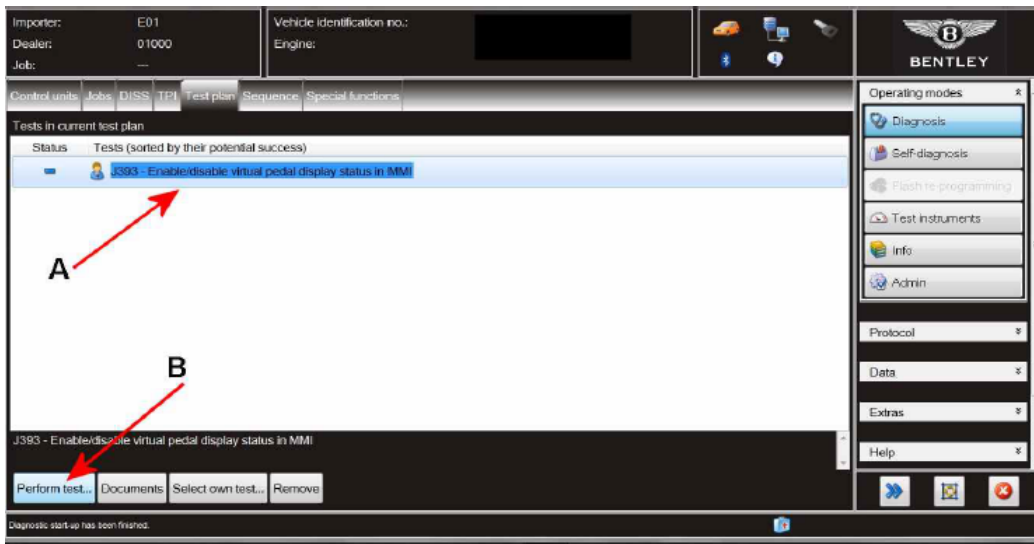


Figure 9

11) Follow all on screen prompts to change the coding of Address 46 - Central Module Comfort system - BCM2 (J393)

- NOTE: During the change the screen shown in Figure 10 (Hands-free boot) will be evident within the MMI screen

**IMPORTANT:** Once the screen shown in Figure 10 is evident ensure the Hands-free boot option is ticked



Figure 10

12) Referring to Figure 11 - Once complete the Hands-free boot option will no longer be evident within the MMI menu NOTE: This is as expected and is to specification



Figure 11

13) Check and confirm the operation of the hands free boot – Refer to the operating instructions within the owners handbook

### Warranty accounting instructions

Warrantytype 910 or 110

Damage service number 55 68

Damage code 02 02

### Labour

Labour operation code 01 50 00 00

Time As per ODIS log (Must not exceed 20 TU's)