



94-21-01 - LED Center Tail Light Assembly Deflecting Away from Body

Release date: 9/22/2021

Condition

Applicable Vehicles					
Model(s)	Year	Eng. Code	Trans. Code	VIN Range From	VIN Range To
ID.4	2021	All	All	All	All

Revision Table			
Instance Number	Published Date	Version Number	Reason For Update
2064621/1	9/22/21	94-21-01	Original publication.

LED tail light assembly deflecting away from the rear lid outwards due to temperature fluctuations.



Note:

LED Tail light cluster (Center) will not be replaced with this procedure.

Technical Background

The LED tail light cluster is bolted to the rear lid on the left and right. The LED tail light cluster arches in the center outwards with a significant temperature change. As a result the LED tail light cluster is pushed out of its middle attachment clip and a gap between the rear lid and continuous LED tail light cluster is created. Figure 1.

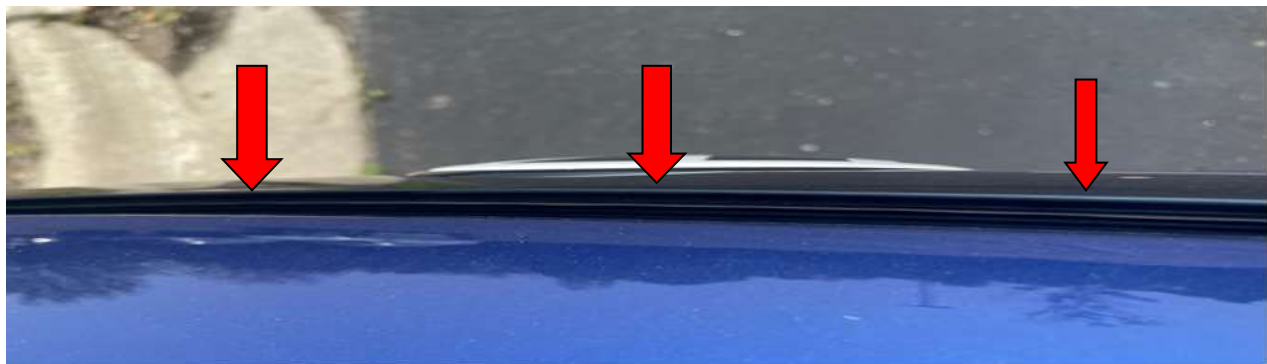


Figure 1



94-21-01 - LED Center Tail Light Assembly Deflecting Away from Body

Release date: 9/22/2021

Production Solution

Updated rear lid mounting grommet.

Service

Apply Lithium grease (G 052 150 A2) or equivalent to the mounting points and install updated securing mountings (11A 945 179 A) or later suffix.

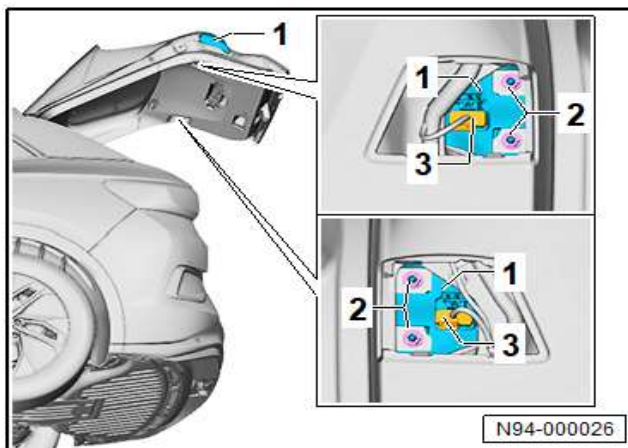


Figure 2

- Remove LED tail light cluster (Center) from the rear lid. See repair manual group 94 in Elsa.

- Apply grease (G 052 150 A2) or equivalent to both left and right mounting points of LED tail light cluster.



Tip:

Figures 3 & 4: Example of removed LED tail light cluster area and where to apply grease to the mounting points (see arrows). Mounting points should move freely after grease application.



Figure 3



Figure 4



94-21-01 - LED Center Tail Light Assembly Deflecting Away from Body

Release date: 9/22/2021



Tip:

Applying grease to the guide/mounting of studs ensures a sufficient length compensation of the LED tail light cluster in the event of significant temperature fluctuation.

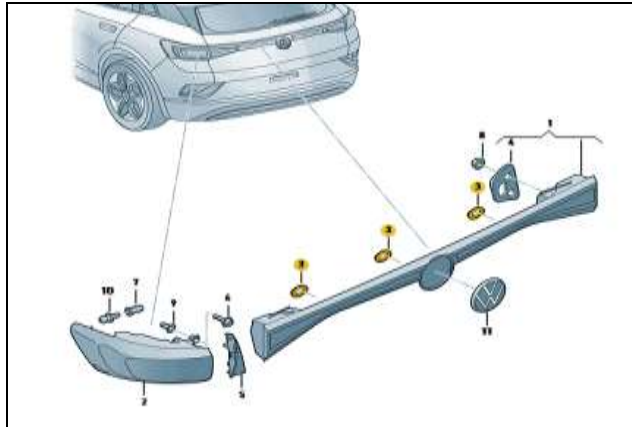


Figure 5

- Replace the 3 tail light mountings in the rear lid (see Figure 5, number 3 (in yellow) with part number 11A 945 179 A or later suffix.
- Reinstall LED tail light cluster in rear lid. See repair manual group 94 in Elsa.

Warranty

To determine if this procedure is covered under Warranty, always refer to the Warranty Policies and Procedures Manual ¹⁾

Model(s)	Year(s)	Eng. Code(s)	Trans. Code(s)	VIN Range From	VIN Range To
ID.4	2021	All	All	All	All
SAGA Coding					
Claim Type:	Use applicable Claim Type ¹⁾				
Service Number:	Damage Code	HST		Damage Location (Depends on Service No.)	
9431	0010	--		--	
Parts Manufacturer	ID4		WVO ²⁾		
Labor Operation ³⁾ : Tail light remove and install (Center)			94311910 = 30TU		
Labor Operation ³⁾ : Lubricate tail light guide/mounts & R & I grommets			94311999 = 30TU		



94-21-01 - LED Center Tail Light Assembly Deflecting Away from Body

Release date: 9/22/2021

Causal Part:		11A 945 179 A
Outside Material: Lithium grease (1 tube repairs 50 vehicles)	Part No: G 052 150 A2	\$0.50
Diagnostic Time ⁴⁾		
GFF Time expenditure	01500000 = Actual GFF print out	NO
Road Test	01210002 = 00 TU	NO
	01210004 = 00 TU	
Technical Diagnosis	01320000 = 00 TU max.	NO
Claim Comment: Input "As per Technical Bulletin 2064621" in comment section of Warranty Claim.		
<p>¹⁾ Vehicle may be outside any Warranty in which case this Technical Bulletin is informational only.</p> <p>²⁾ Code per warranty vendor code policy.</p> <p>³⁾ Labor Time Units (TUs) are subject to change with ELSA updates.</p> <p>⁴⁾ Documentation required per Warranty Policies and Procedures Manual.</p>		

Required Parts and Tools

Part No:	Part Description	Quantity
G 052 150 A2	Lithium grease	1
11A 945 179 A	Grommet	3

Part numbers are accurate at time of publication. Always refer to ETKA for the latest part information.

No Special Tools required.

Additional Information

All part and service references provided in this Technical Bulletin are subject to change and/or removal. Always check with your Parts Dept. and Repair Manuals for the latest information.