



DTNA Solutions > Service Solutions > Freightliner  
> SS 1034216 Detroit Assurance Radar Front End Shipp...

Options

## SS 1034216 Detroit Assurance Radar Front End Shipping Label

### Applicable Vehicles:

This solution is being written to address the Radar Front End (RDF) cover for New Cascadia vehicles, however the information being supplied, could relate to all Detroit Assurance forward facing radars.

### Symptoms:

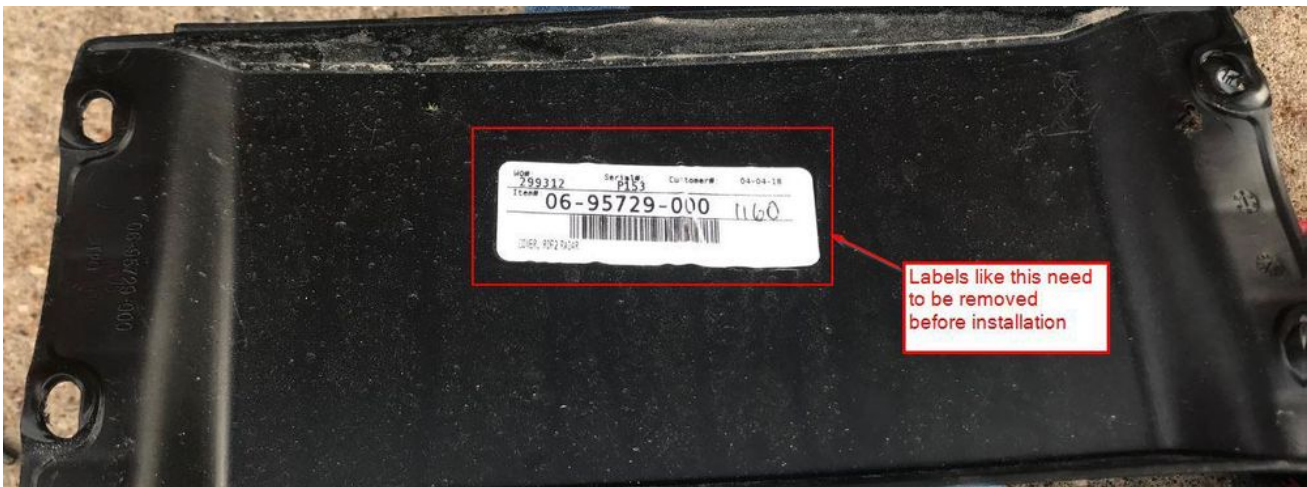
In some cases Detroit Assurance may unexpectedly issue warnings or experience other performance issues if the RDF has any obstructions on or around the forward radar, as stated in [5 of the New Cascadia Driver's Manual](#). Therefore it is important not to mount any attachments in front of the RDF, nor to paint or affix any item to the front cover. Items such as crash guards, stickers or even paint all affect the RDF's ability to properly function.

### Issue:

It has been reported that in some cases shipping labels may have been affixed to the inside center of the front cover on aftermarket parts. The shipping label has since been moved to the outer edge of the front cover, which should not affect the RDF's ability to properly sense obstacles located in front of the vehicle.

**Solution:**

When a new RDF cover is received it is recommended to remove shipping labels prior to installation (reference picture below).



Labels :

- Electrical
- New Cascadia

aba

adaptive cruise   false braking   false positive   false warnings   new cascadia   vrdu

Add tags

👍
7 Kudos

## COMMENTS



Kyle\_Siebert

01-19-2020 08:20 P

I have noticed loose leaves around the bottom of the RDF area, causing a complaint and result of radar blocked codes.

## Version history

**Last update:** 08-10-2021 12:41 PM

**Updated by:** ADMIN **Kimberly\_Kuwaba**

## Contributors



**Kimberly\_Kuwaba**



Copyright © Daimler Trucks North America LLC. All rights reserved. Daimler Trucks North America LLC is a Daimler company.

[Privacy Statement](#) • [Legal Notice and Terms](#)