



Technical Service Bulletin

63 Paint peeling on the front bumper cover near the center lower air intake grille

63 21 06 2064362/1 August 24, 2021.

Model(s)	Year	VIN Range	Vehicle-Specific Equipment
A6, S6	2019	000001 - 12150	Not Applicable

Condition

Customer statement:

- The paint finish is peeling on the front bumper cover.

Workshop findings:

- The paint is peeling specifically in the lower lip section of the bumper cover where it meets the center lower air intake grille.

Technical Background



Note:

For this TSB to be technically relevant including any warranty coverage application the paint peel condition described in this TSB must coincide precisely as the condition is described. Any other paint shortcoming not specifically covered in this TSB must be documented and managed according to the Warranty Policies and Procedures. Repairs performed outside the scope of this TSB without the requisite documentation, authorization, and reporting will be debited.

The loss of adhesion of the paint in this specific area is confirmed. No outside influence is found after careful inspection. The following images depict the paint adhesion loss at the location at issue:

1. Figure 1 shows the area of the front bumper where the paint peeling is located. For this TSB to apply the peeling condition is confined only to this area of the front bumper cover.



Figure 1. Lower lip section of the bumper cover.



Technical Service Bulletin

2. Figure 2 shows a closer view of the peeling.



Figure 2. Loss of adhesion of the bumper paint.

3. Figure 3 shows a close-up view of the peeling paint in this area.



Figure 3. Moderate paint adhesion loss.



Technical Service Bulletin

4. Figure 4 shows a side view depicting the length of the paint peel.



Figure 4. Side view of the bumper with the paint peeling.

5. Figure 5 shows the beginning stages of the paint adhesion loss.

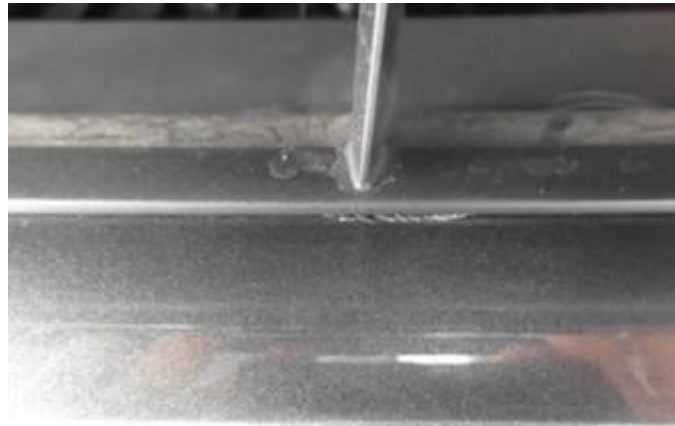


Figure 5. Early-stage of paint peel.

Production Solution

Optimization of the paint application process has been implemented in production.

Service

If the paint adhesion loss is as described in this TSB and solely confined to the lower lip section of the bumper cover where it meets the center lower air intake grille the front bumper cover must be replaced.



Technical Service Bulletin



Note:

Before repair for this condition take clear photographs of the condition, one at a distance appropriate to contain the entire front bumper and another closer to the peeling area. Include a photograph from the right and left sides of the peeling area. Post them to Doc-It in the event later product quality review becomes necessary.

Warranty

Claim Type:	<ul style="list-style-type: none"> • 950 for paint defects before delivery. • 150 for paint defects after delivery. • If the vehicle is outside any warranty, this Technical Service Bulletin is informational only. 		
Service Number:	6329		
Damage Code:	0067		
Labor Operations:	zFAS systems calibration:		
	<i>If alignment is required, measurement sheets must be uploaded to Doc-it</i>		
	<i>Camera for night vision system adjust (if equipped):</i>		
	<i>If alignment is not required:</i> Vehicle front and rear checked	4495 0150	See SRT with associated labor operations
	Preparation driver-assist calibration	9092 0050	See SRT with associated labor operations
	Camera for night vision system adjust	9080 1550	See SRT with associated labor operations
	Or		
	<i>If alignment is required:</i> Vehicle front and rear measured	4495 0350	See SRT with associated labor operations
Preparation driver-assist calibration	9092 0051	See SRT with associated labor operations	



Technical Service Bulletin

Camera for night vision system adjust	9080 1550	See SRT with associated labor operations
Overhead view camera adjust (if equipped):		
Overhead view camera adjust	9083 1550	See SRT with associated labor operations
ECM object recognition adjust (if equipped):		
ECM object recognition adjust (static calibration, front corner radar)	9158 1660	See SRT with associated labor operations
ECM for laser adaptive cruise control adjust (if equipped):		
<i>If alignment is not required:</i> Vehicle front and rear checked	4495 0150	See SRT with associated labor operations
Preparation driver-assist calibration	9092 0050	See SRT with associated labor operations
ECM for laser adaptive cruise control adjust	9159 1550	See SRT with associated labor operations
Or		
<i>If alignment is required:</i> Vehicle front and rear measured	4495 0350	See SRT with associated labor operations
Preparation driver-assist calibration	9092 0051	See SRT with associated labor operations
ECM for laser adaptive cruise control adjust	9159 1550	See SRT with associated labor operations
Radar sensor adjust (if equipped):		



Technical Service Bulletin


	<i>If alignment is not required:</i> Vehicle front and rear checked	4495 0150	See SRT with associated labor operations
	Preparation driver-assist calibration	9092 0050	See SRT with associated labor operations
	Radar sensor adjust	9163 1550	See SRT with associated labor operations
	Or		
	<i>If alignment is required:</i> Vehicle front and rear measured	4495 0350	See SRT with associated labor operations
	Preparation driver-assist calibration	9092 0051	See SRT with associated labor operations
	Radar sensor adjust	9163 1550	See SRT with associated labor operations
Sublet operations:	Replace and paint new part (Labor Operation listed in Outside Labor)	L0011600 (Solid Paint) L0021600 (Metallic Paint) L0031600 (Pearl Paint)	Max 320 TU x dealer labor rate
Diagnostic Time:	GFF	0150 0000	Time stated on the diagnostic protocol (Max 50 TU)
	Road test prior to the service procedure	No allowance	0 TU
	Road test after the service procedure	0121 0004	10 TU
Claim Comment:	As per TSB #2064362/1		

All warranty claims submitted for payment must be in accordance with the *Audi Warranty Policies and Procedures Manual*. Claims are subject to review or audit by Audi Warranty.



Technical Service Bulletin

Required Parts and Tools

Always check with your Parts Department and/or ETKA for the latest information and parts bulletins.		
Part Number	Part Description	Quantity
4K0098623	Mounting parts set for bumper	01
4K0807065	 Cover for bumper	01
N/A	Paint Listed as MATERIAL in Outside Material	Qty 1 Each \$ Cost of Material (Max \$200)

Additional Information

All parts and service references provided in this TSB (2064362) are subject to change and/or removal.

©2021 Audi of America, Inc. All rights reserved. The information contained in this document is based on the latest information available at the time of printing and is subject to the copyright and other intellectual property rights of Audi of America, Inc., its affiliated companies, and its licensors. All rights are reserved to make changes at any time without notice. No part of this document may be reproduced, stored in a retrieval system, or transmitted in any form or by any means, electronic, mechanical, photocopying, recording, or otherwise, nor may these materials be modified or reposted to other sites without the prior expressed written permission of the publisher.