

Subject: BREAKAGE OF FRONT/REAR SEAT BACK DECORATION PLATE	Bulletin No.: 09-024/21
	Last Issued : 08/05/2021

APPLICABLE MODEL(S)/VINS

For front seats:

2019-2020 Mazda6 (US spec) with VINS lower than JM1GL*****523969 (produced before March 26, 2020)

2020 Mazda6 (Mexico spec) with VINS lower than JM1GL*****524069 (produced before March 27, 2020)

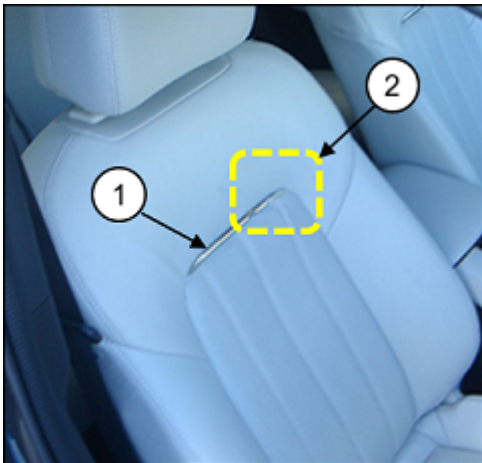
For rear seats:

2018-2020 Mazda6 (US spec) with VINS lower than JM1GL*****523969 (produced before March 26, 2020)

2019-2020 Mazda6 (Mexico spec) with VINS lower than JM1GL*****524069 (produced before March 27, 2020)

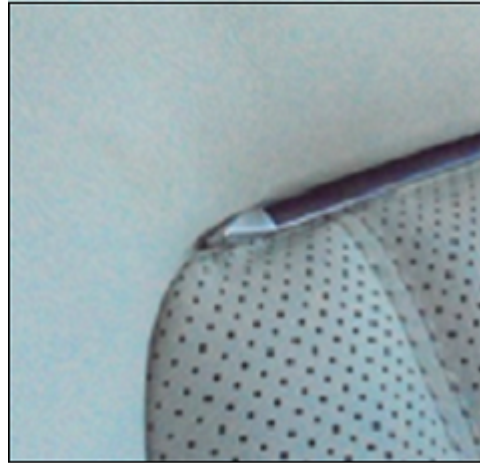
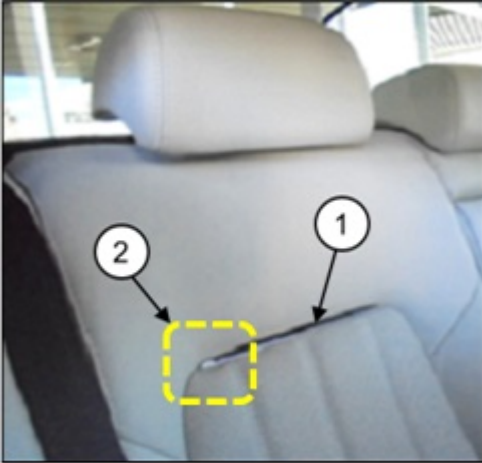
DESCRIPTION

Some vehicles may exhibit a breakage of the decoration plate (1) on the front or rear seat backs.



Detail (2)

CONSUMER NOTICE: The information and instructions in this bulletin are intended for use by skilled technicians. Mazda technicians utilize the proper tools/ equipment and take training to correctly and safely maintain Mazda vehicles. These instructions should not be performed by "do-it-yourselfers." Customers should not assume this bulletin applies to their vehicle or that their vehicle will develop the described concern. To determine if the information applies, customers should contact their nearest authorized Mazda dealership. Mazda North American Operations reserves the right to alter the specifications and contents of this bulletin without obligation or advance notice. All rights reserved. No part of this bulletin may be reproduced in any form or by any means, electronic or mechanical---including photocopying and recording and the use of any kind of information storage and retrieval system ---without permission in writing.



Detail (2)

This is caused by the seat back decoration plate not being strong enough. To eliminate this concern, the seatback decoration plates have been modified.

Customers having this concern should have their vehicle repaired using the following repair procedure.

REPAIR PROCEDURE

1. Verify customer concern.
2. Replace both the front or rear seat back decoration plates with modified ones according to the instructions on MGSS.
 - (FRONT SEAT BACK TRIM REMOVAL/INSTALLATION)
 - (REAR SEAT BACK TRIM REMOVAL/INSTALLATION)
3. Verify repair.

PARTS INFORMATION

Parts Number	Description	Qty.	Notes
GBVG-88-2J6A	Plate No.1, Fixing (Front seat back decoration plate)	2	Front seat backs (both sides)
H380-88-225	Band	10	[R] Both front seat backs
GAEA-88-2L5A	Plate (Rear seat back decoration plate)	2	Rear seat backs (both sides)

[R]: Replace

CONSUMER NOTICE: The information and instructions in this bulletin are intended for use by skilled technicians. Mazda technicians utilize the proper tools/ equipment and take training to correctly and safely maintain Mazda vehicles. These instructions should not be performed by "do-it-yourselfers." Customers should not assume this bulletin applies to their vehicle or that their vehicle will develop the described concern. To determine if the information applies, customers should contact their nearest authorized Mazda dealership. Mazda North American Operations reserves the right to alter the specifications and contents of this bulletin without obligation or advance notice. All rights reserved. No part of this bulletin may be reproduced in any form or by any means, electronic or mechanical---including photocopying and recording and the use of any kind of information storage and retrieval system ---without permission in writing.

WARRANTY INFORMATION**NOTE:**

- This warranty information applies only to verified customer complaints on vehicles eligible for warranty repair.
- This repair will be covered under Mazda's New Vehicle Limited Warranty term.
- Additional diagnostic time cannot be claimed for this repair.

Warranty Type	A
Symptom Code	92
Damage Code	9A
Part Number Main Cause	GBVG-88-2J6A or GAEA-88-2L5A
Quantity	2 or 4
Operation Number / Labor Hours:	XT5HCRX / 2.0 Hrs (front seat backs - both sides) XXT5JERX / 1.0 Hrs. (rear seat back - both sides)

CONSUMER NOTICE: The information and instructions in this bulletin are intended for use by skilled technicians. Mazda technicians utilize the proper tools/ equipment and take training to correctly and safely maintain Mazda vehicles. These instructions should not be performed by "do-it-yourselfers." Customers should not assume this bulletin applies to their vehicle or that their vehicle will develop the described concern. To determine if the information applies, customers should contact their nearest authorized Mazda dealership. Mazda North American Operations reserves the right to alter the specifications and contents of this bulletin without obligation or advance notice. All rights reserved. No part of this bulletin may be reproduced in any form or by any means, electronic or mechanical---including photocopying and recording and the use of any kind of information storage and retrieval system ---without permission in writing.