

Terex Utilities**PRODUCT NOTICE****PN691****DATE:** 7/27/2021**REVISED:****TO:** Owners, Users, Dealers, and Installers**MODELS AFFECTED:** TL17i Swing Arm Aerial Devices**SUBJECT:** Rotator Bracket Weld Crack**Issue:**

Terex TL17i Swing Arm aerial devices, produced from January 2013 to December 2018, may have deficient welds on the rotator bracket. These welds may fatigue and crack. **Failure of the rotator bracket welds may result in the swing arm and basket sagging out of level.**

Action:**What the Owner Must Do:**

1. Inform all users, operators, and supervisors that the rotator bracket must be inspected within 30 days of receipt of this bulletin.
2. Inspect the unit to determine if your unit has cracking of the rotator bracket welds using the figures below as reference. The area to inspect is directly over the hydraulic rotator at the end of the telescopic boom. Covers will need to be removed to inspect the rotator bracket.

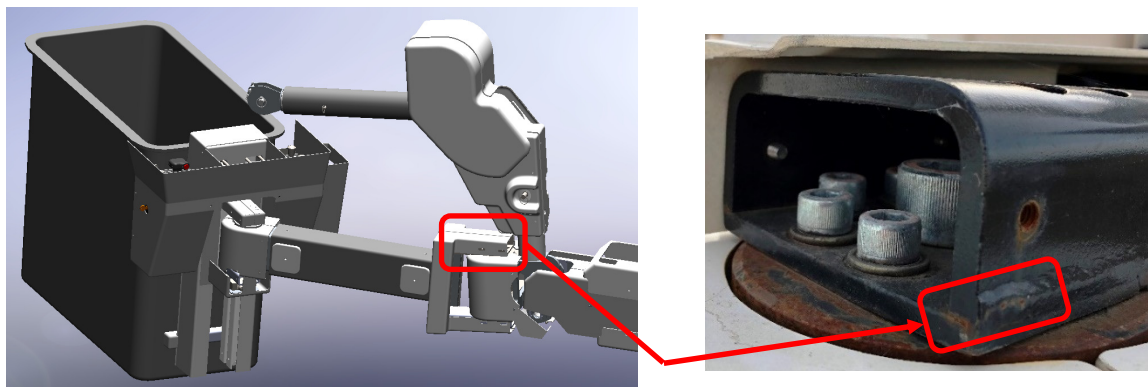


Figure 1. Area of machine to inspect (2 places)

3. If your unit has cracking of the rotator bracket welds, do not continue to use the unit until repaired. Contact your local dealer to arrange for repair.
4. If your unit does not have cracking of the rotator bracket weld, follow the Continued Use Instructions in this bulletin. Always follow operation, inspection, and maintenance requirements as specified in the manuals.

Continued Use:

Inform the users of the content of this bulletin and remind them of the daily pre-shift inspection requirements.

1. Inspect the rotator bracket welds daily before use. Without removing the covers, inspect the ends of the rotator bracket welds for indications of cracking using the picture below as reference. If cracking is suspected, the covers must be removed, and an inspection conducted using the inspection criteria in the Action section above.



Figure 2. Area of machine to inspect daily (2 places)

- a. If the rotator bracket welds are not cracked, use can continue following all requirements for operation.
 - b. If the rotator bracket welds are cracked, do not continue to use the unit until repaired.
2. Always follow inspection and maintenance requirements as specified in the manuals.

What Terex will Do:

Terex will provide a replacement rotator bracket at no cost to the customer, 8 hours for labor to remove the existing bracket and install the replacement bracket, and up to 4 hours for travel to the machine.

Terex or your local dealer will contact you to arrange for repair of your machine. If your machine has a cracked rotator bracket discontinue use and contact your local dealer to arrange for repair. If you have sold the unit involved in this bulletin forward this bulletin to the new owner within 10 days and notify your dealer of the serial number and contact information for the new owner.