



Mack Chassis - Model GR/GU - Hood Warpage



> **Internal Content**

Affected models will have an appearance similar to the one shown in the circled area in the example below.



It has been determined that an increase of lateral structural hood support is required to correct this issue.

Parts And Materials

Part Number	Description
82172316	Upper Section (Support, RH)
82151844	Upper Section (Support, LH)

Product	Information
Lord Fusor® T21 Composite Adhesive (Slow)	

 Live UI



Repair

1. Remove the hood, rotate the hood upside down, and support all 4 corners.

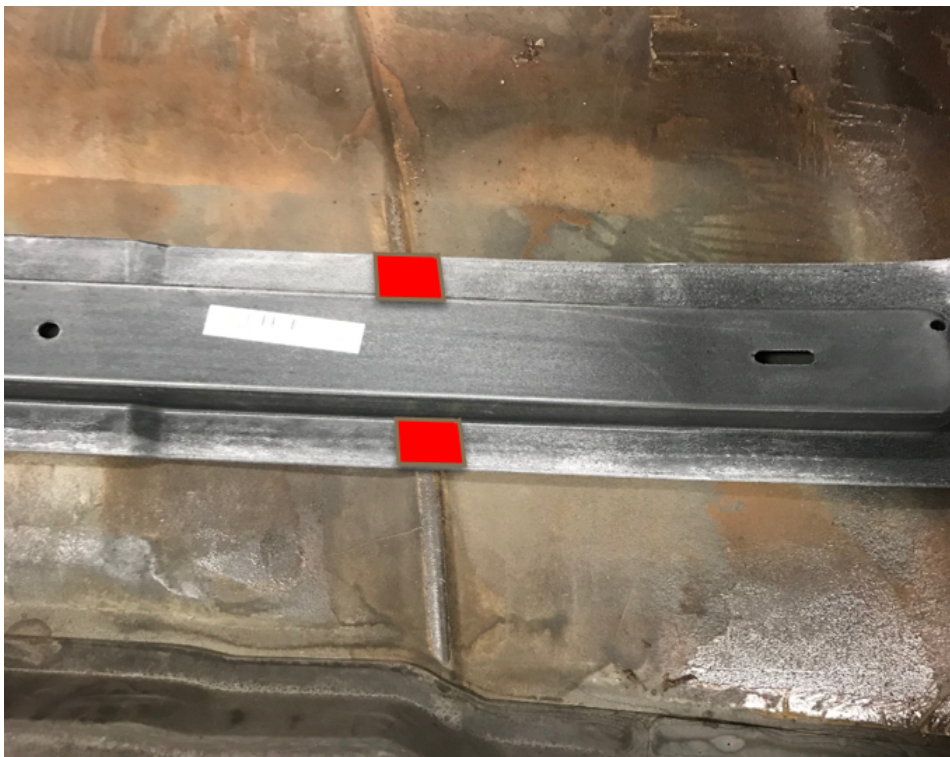


2. The new supports should be positioned approximately 18 inches (45 cm) from the rear edge of the hood.

 Live UI



3. Notch each of the support sections where they pass over the grooved sections on each side of the hood. One groove and the areas to be trimmed out around it are shown in the photo below:



Adhesive. Add weight evenly across the new hood support to hold it firmly to the hood. Cure time is 4 hours.



5. Once the composite adhesive has cured a body shop can complete the rework of the underside of the hood and the paint repair.

 Tags [k31126441](#) [sag](#) [hood dimple](#) [sagging](#)

 Live UI

Related links and attachments

No links or attachments available



Feedback

[Give feedback](#)

to help improve the content of this article