

July 22, 2021

Version 1

Clicking from the Wheel Area

AFFECTED VEHICLES

Year	Model	Trim	VIN Range
2017-21	NSX	ALL	ALL

SYMPTOM

There is a clicking from the wheel area while driving.

POSSIBLE CAUSE

There is debris build-up on brake discs.

CORRECTIVE ACTION

Clean all four brake disc.

PARTS INFORMATION

Part Name	Part Number	Quantity
Flange Nut (10MM)	90002-TA0-A00	2
Flange Bolt (10 X 50)	95701-10050-05	2
EPB Caliper Mounting Bolt (M12 x 33)	90103-T6N-A60	4

TOOLS INFORMATION

Enter a short description of your concept here (optional).

Part Name	Part Number	Quantity
Cap Remover	07AAC-T6NA100	1

CLIENT INFORMATION: The information in this bulletin is intended for use only by skilled technicians who have the proper tools, equipment, and training to correctly and safely maintain your vehicle. These procedures should not be attempted by "do-it-yourselfers," and you should not assume this bulletin applies to your vehicle, or that your vehicle has the condition described. To determine whether this information applies, contact an authorized Acura automobile dealer.

WARRANTY CLAIM INFORMATION

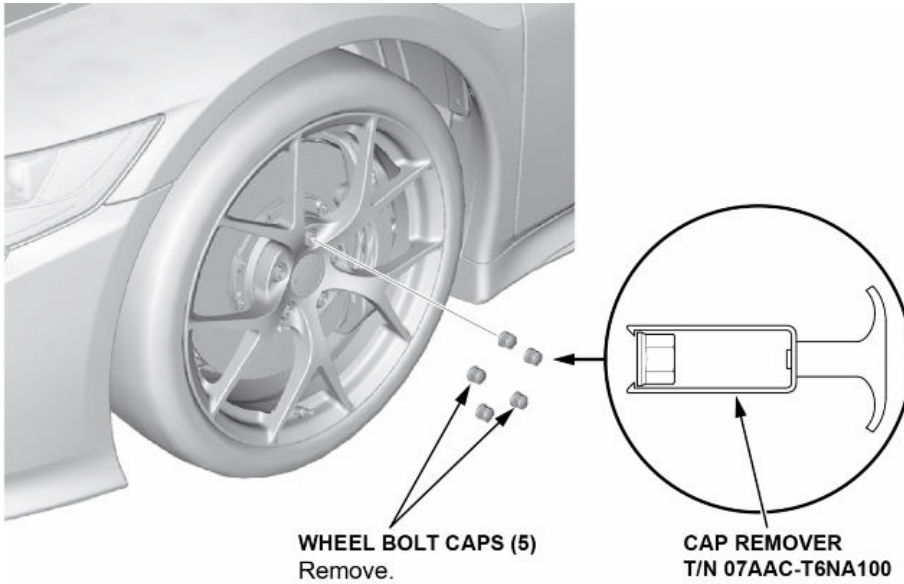
The normal warranty applies.

Operation Number	Description	Flat Rate Time	Defect Code	Symptom Code	Template ID	Failed Part Number
4100A6	Remove and clean the Front and Rear Disc	2.0 hr	01401	04213	B21025A	45251-T6N-G03

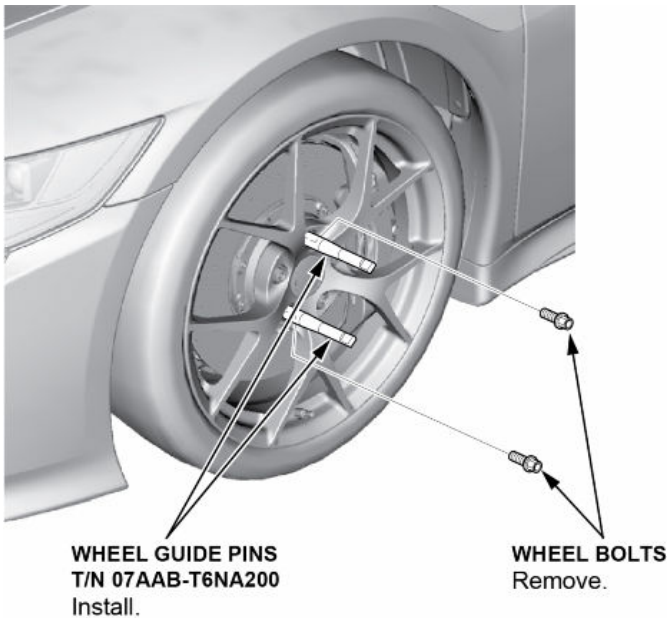
REPAIR PROCEDURE

Wheel Removal

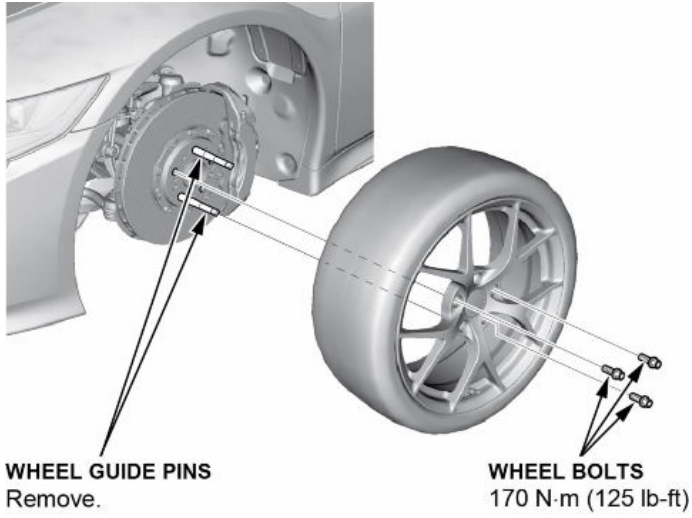
1. Place the vehicle on a lift.
2. Remove the wheel bolt caps using the cap remover (T/N 07AAC-T6NA100).



3. Remove two wheel bolts and install the wheel stud guide pins (T/N 07AAB-T6N200) in their place..



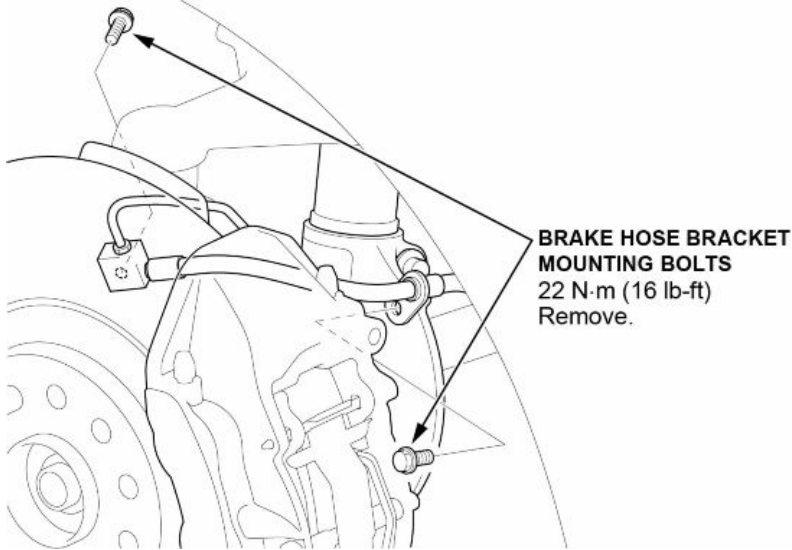
4. Remove the remaining wheel bolts, remove the wheel, then remove the wheel stud guide pins.



5. Repeat steps 1-5 for the remaining wheels.

Front Disc Removal Procedure

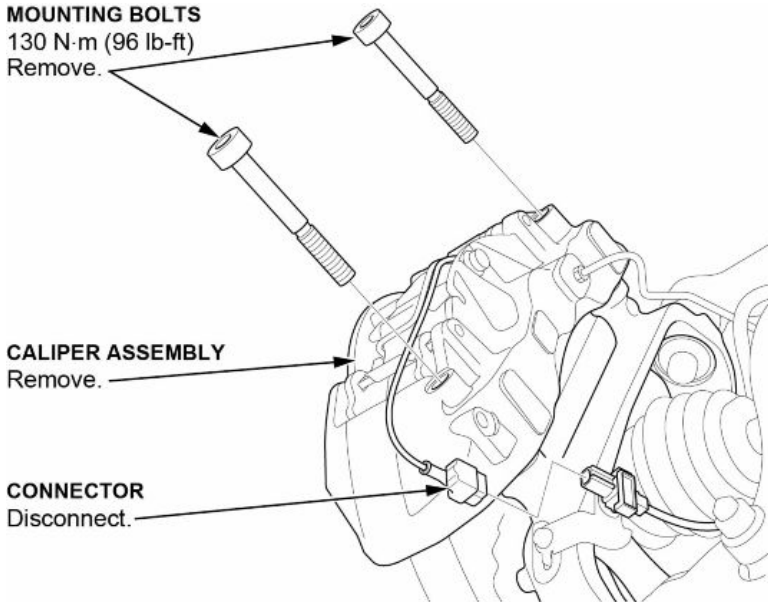
1. Remove the brake hose bracket mounting bolts.



2. Disconnect the connector and remove the caliper assembly without disconnecting the brake line from the caliper body.

NOTE: To prevent damage to the caliper, brake hose, or brake line, use a caliper hanger (T/N 07AAB-T6NA300) to hang the caliper from the undercarriage.

MOUNTING BOLTS
130 N·m (96 lb-ft)
Remove.



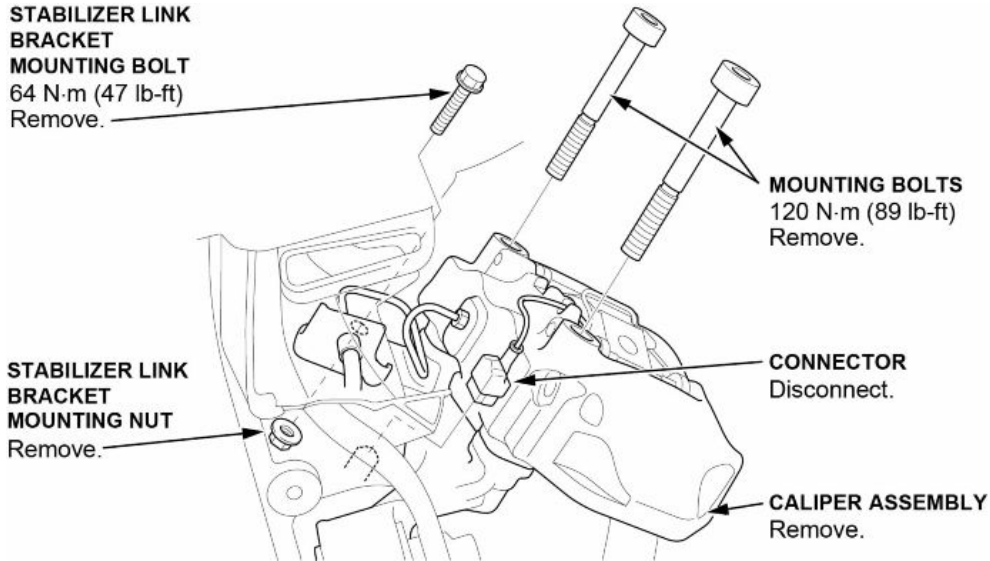
3. Install the wheel guide pins, remove the brake disc flathead screws, slide and remove the brake disc.

NOTE: If the brake disc is stuck to the hub bearing unit, thread two 8 x 1.25 mm bolts into the brake disc to push it away from the hub bearing unit. Turn each bolt 90 degrees at a time to prevent the brake disc from binding. Never attempt to strike the rotor with a hammer or like object, as this will cause damage to the rotor and personal injury.

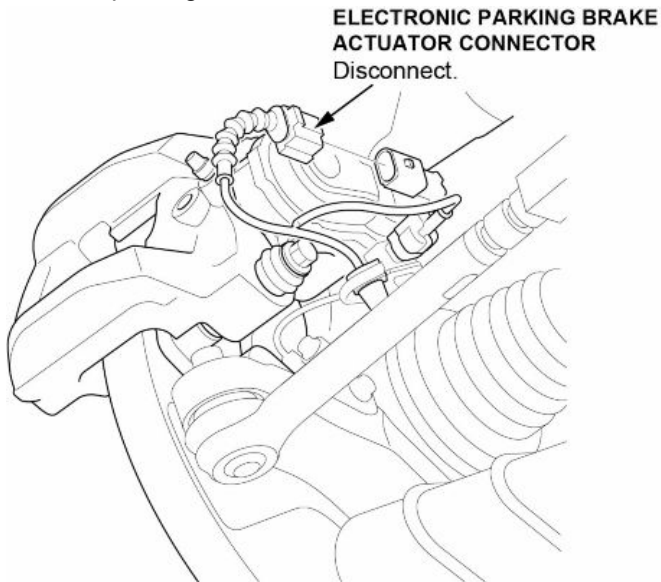
Rear Disc Removal Procedure

1. Remove the stabilizer link bracket mounting bolt and nut, disconnect the connector, and remove the caliper assembly without disconnecting the brake line from the caliper body.

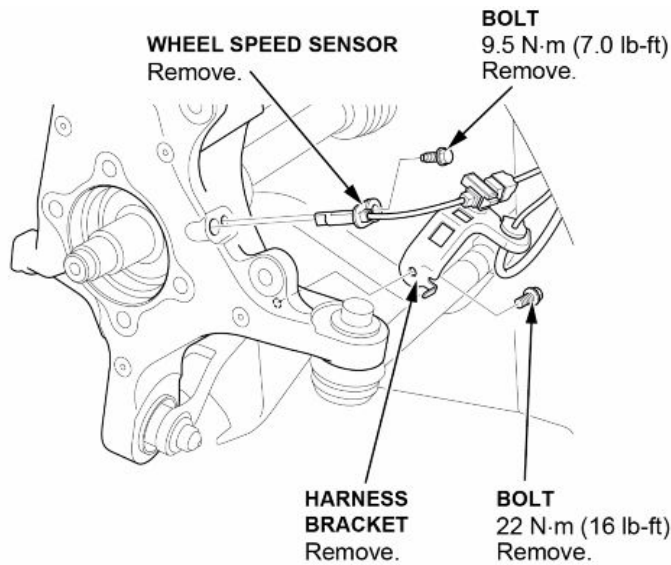
NOTE: During installation, use a new mounting bolt and nut. To prevent damage to the caliper, brake hose, or brake line, use a caliper hanger (T/N 07AAB-T6NA300) to hang the caliper from the undercarriage.



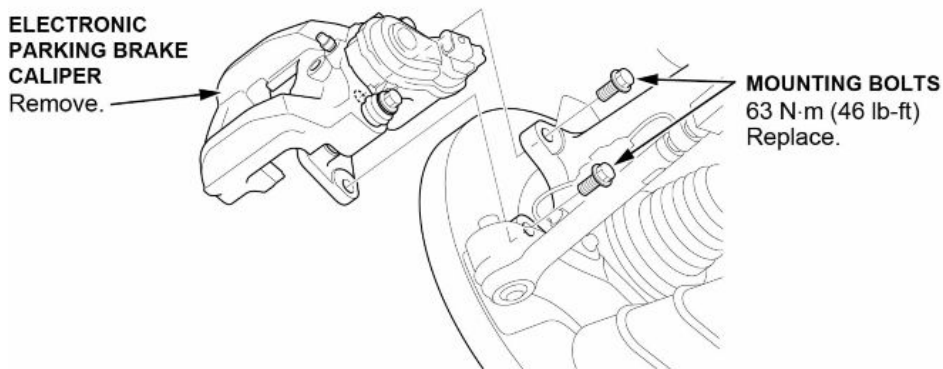
2. With the parking brake released, disconnect the electronic parking brake actuator connector.



3. Remove the wheel speed sensor.
4. Remove the harness bracket.



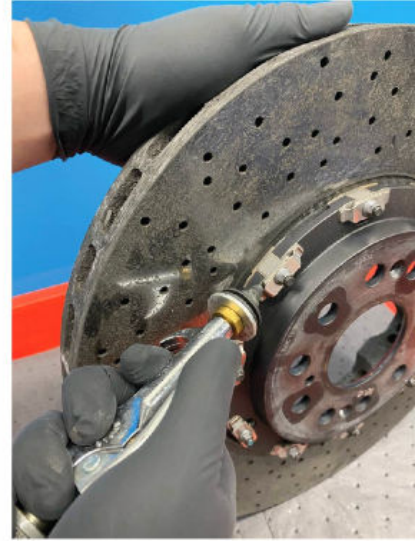
5. Remove the electronic parking brake caliper.
NOTE: During installation, use new mounting bolts.



6. Install the wheel guide pins, remove the brake disc flathead screws, and remove the brake disc.
NOTE: If the brake disc is stuck to the hub bearing unit, thread two 8 x 1.25 mm bolts into the brake disc to push it away from the hub bearing unit. Turn each bolt 90 degrees at a time to prevent the brake disc from binding. Never attempt to strike the rotor with a hammer or like object, as this will cause damage to the rotor and personal injury.

Disc Cleaning Procedure

1. Take all discs to a clean work bench, then using compressed air, blow all loose dirt and debris from the face of the disc, drilled cooling holes (carbon ceramic discs only), and the bobbins connecting the solid hat to the disc.



2. Using an approved brake cleaner, clean the face of the disc, and apply generously to the bobbin area.



3. Wipe and clean with a cloth, and dry with compressed air.
4. Wipe all excess away.
5. Using an approved brake cleaner, clean the face of the disc one more time.
6. Install the parts in the reverse order of removal.

Parking Brake Adjustment

1. Turn the vehicle to the ON mode.
2. Apply the parking brake, then release the parking brake.
3. Turn the vehicle to the OFF mode.

END