



Run Smart

# Cascadia Ultra Lightweight Package



Productivity

## What is it?

New Ultra Lightweight Package is available for Cascadia 116 and 126, saving up to an estimated **463 lbs** vs. standard opts. Package code 021-008 Ultra Lightweight Package selects all of the individual data codes listed. Specific codes can be spec'd a' la carte. **Available for builds starting June/28/2021.**

## Why is it important?

Lightweight options allow for greater payload capacity for weight sensitive customers.

### Package Code: 021-008 Ultra Lightweight Package

*(includes all of the following)*

Included Data Codes	Description (LW = lightweight)	Approx. Weight Savings
644-076	<b>LW Aerodynamic Hood &amp; Cowl</b> <i>(glass bead filled construction, same dimensions/function)</i>	35 lbs
269-008	<b>LW Radiator Mounting</b> <i>(aluminum upper &amp; lower mounts)</i>	18 lbs
23U-029 23U-030	<b>LW 13g DEF Tank</b> <i>(aluminum brackets)</i> <b>LW 23g DEF Tank</b> <i>(aluminum brackets)</i>	9 lbs
650-054	<b>Air Cab Mounts w/ Aluminum Front Support</b> <i>(Front Aluminum Cab Mounts)</i>	11 lbs
622-317	<b>LW Airliner 40,000# Rear Suspension</b>	39 lbs
292-145	<b>(2) NorthStar AGM, Group 31, 2300 CCA Batteries</b> <i>(Optimized from standard 4 batteries to 2 high performance AGM)</i>	91 lbs
558-998	<b>No Front Tow Hooks</b>	25 lbs
764-998	<b>No Exterior Sun Visor</b>	12 lbs
400-107 400-108	<b>LW Detroit DA-F-12.5 12,500# Front Axle</b> <i>(avail. late Q3:2021)</i> <b>LW Detroit DA-F-12.0 12,000# Front Axle</b> <i>(avail. late Q3:2021)</i>	33 lbs
570-006	<b>Aluminum Outboard Angles - 5<sup>th</sup> Wheel Mounting</b> <i>(avail. late Q3:2021)</i>	23 lbs
*	<b>LW Crossmember Package</b> <i>(see pg. 2 for details)</i>	167 lbs
<b>Est. Total Weight Savings</b>		<b>463 lbs</b>

- GCW ≤ 80,000 lbs
- Compatibility driven by individual component and AA4 codes
- Components priced individually
- Can be spec'd a' la carte *(if spec'ing a' la carte, it's suggested to not select/deselect package code)*

**Actual weight may vary based on vehicle configuration.**

**For further information on product offerings please contact your CAE coordinator.**



Run Smart

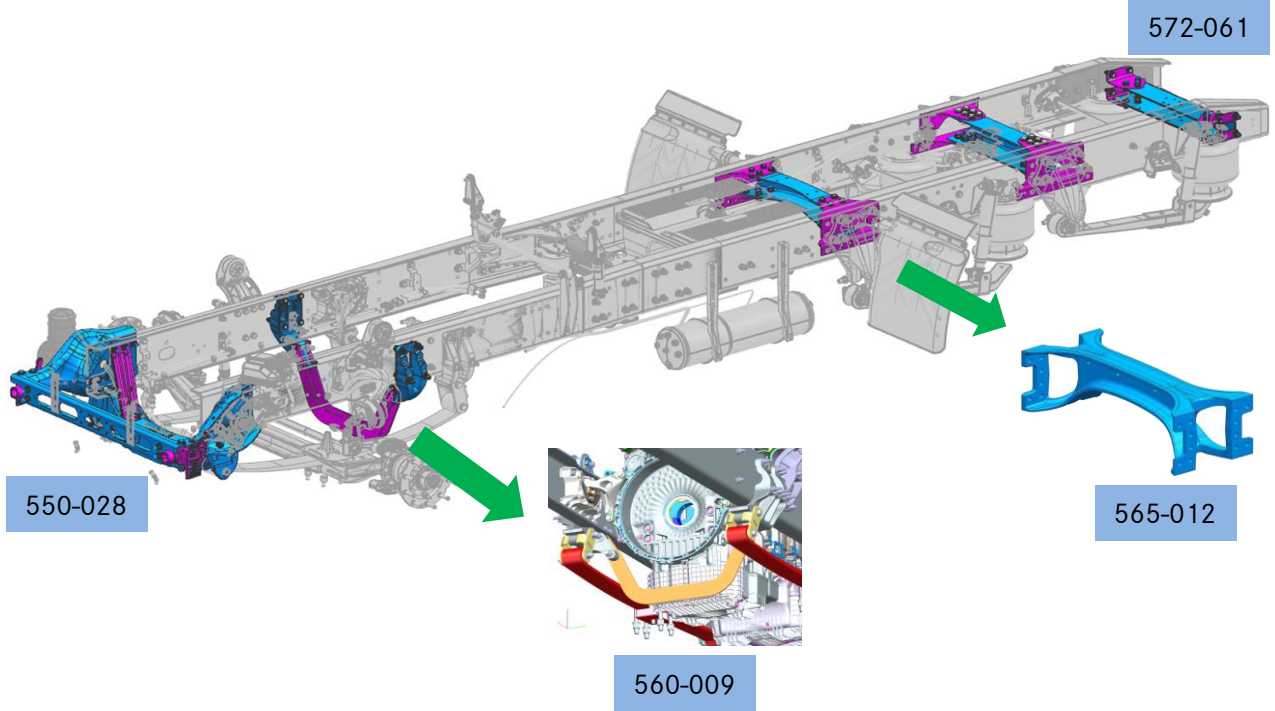
# Cascadia Ultra Lightweight Package



Productivity

## LW Crossmember Package

Included Data Codes	Description	Approx. Weight Savings
*	LW Crossmember Package <i>(includes all of the following)</i>	167 lbs
560-009	LW Underslung Crossmember -Single Blade	48 lbs
565-012	LW Suspension Crossmember	99 lbs
550-028	LW Front Closing Crossmember	20 lbs
572-061	LW Aluminum Tractor C-Channel Crossmember w/ 3.5" Kingpin Clearance <i>(20lbs lighter than 572-029: Tractor C-Channel Crossmember w/ 3.5" Kingpin Clearance)</i>	0 lbs
	<b>Est. Total Weight Savings</b>	<b>167 lbs</b>



Freightliner Action Bulletin

Actual weight may vary based on vehicle configuration.  
For further information on product offerings please contact your CAE coordinator.



Run Smart

# Cascadia Ultra Lightweight Package



## Package Component Details

644-076

LW Aerodynamic Hood & Cowl

-35 lbs

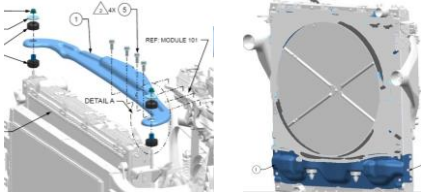


- Glass bead filled construction
- No changes to fit/function
- 116" BBC only

269-008

LW Radiator Mounting

-18 lbs

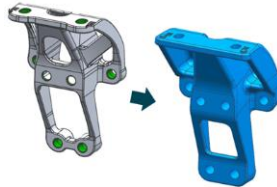


- Aluminum upper & lower mounts
- Not avail. w/ X15 or X12

650-054

Air Cab Mounts w/ Aluminum Front Support  
*(Front Aluminum Cab Mounts)*

-11 lbs



- 116" BBC only
- Daycab only

23U-029

LW 13g DEF Tank *(aluminum brackets)*

23U-030

LW 23g DEF Tank *(aluminum brackets)*

-9 lbs



- Aluminum Brackets

Actual weight may vary based on vehicle configuration.  
For further information on product offerings please contact your CAE coordinator.



Run Smart

# Cascadia Ultra Lightweight Package



Productivity

## Package Component Details

292-145

(2) NorthStar AGM, Group 31, 2300 CCA Batteries  
*(Optimized from standard 4 batteries to 2 high performance AGM)*

-91 lbs



- Daycab only
- DD13 or X12 only
- No shore power or battery powered HVAC
- Available with in-rail, in-cab and frame mounted battery box

622-317

LW Airliner 40,000#

-39 lbs

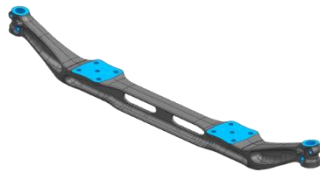


- Aluminum track bars
- Aluminum Control Rods
- Aluminum Fwd Suspension Crossmember
- Bi-Lateral Mono-Leaf Spring w/ HD Bushing

400-107  
400-108

LW Detroit DA-F-12.5 12,500# Front Axle  
LW Detroit DA-F-12.0 12,000# Front Axle

-33 lbs

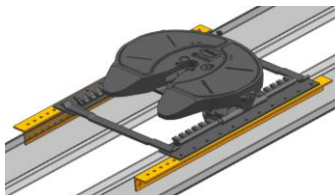


- Available late Q3:2021
- I Beam Design
- Reduced material
- Daycab only

570-006

Aluminum Outboard Angles - 5<sup>th</sup> Wheel Mounting

-23 lbs



- Available late Q3:2021
- 116" BBC only
- Daycab only
- No liquid bulk applications
- ≤40k rear suspensions
- Only available w/ certain 5<sup>th</sup> wheels

Actual weight may vary based on vehicle configuration.  
For further information on product offerings please contact your CAE coordinator.