

07/15/21
CAL FTL 91-002

Subject: Replacement of Sears Driver Seat Metal Mounting Clip to Eliminate Seat Sensor Chaffing Issue

Models Affected: Freightliner New Cascadia vehicles built from June 2018 through June 2021.

General Information

Our records indicate that you are the owner of New Cascadia vehicles with Sears Driver Seats (sales code 756-1H2).

The seat sensor harness on New Cascadia vehicles ordered with a Sears driver seat (sales code 756-1H2) may experience chaffing due to the incorrect mounting of a metal clip edge; excessive chaffing may result in disabling adaptive cruise control. The metal clip edge needs to be replaced by a plastic clip edge to resolve this issue.

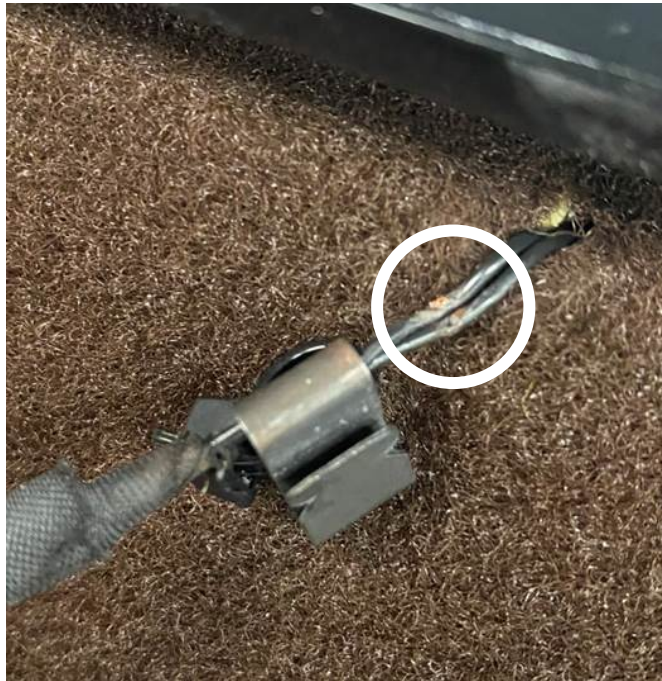


Fig. 1, Chaffed Driver Seat Sensor Harness

07/15/21
CAL FTL 91-002

Parts

Parts Required		
Part Number	Part Description	Quantity/Truck
23-13477-010	CLIP-EDGE, 1-3MM, CA TIE, PRL-SID	1

Table 1, Parts Required

Work Instructions

1. Park the vehicle, shut down the engine, and apply the parking brakes. Chock the tires.
2. Access the cab and locate where the driver seat sensor harness is fastened to the right-hand side of the driver's seat. See **Fig. 2**.



Fig. 2, Driver Seat Sensor Harness Fastened to Seat

07/15/21
CAL FTL 91-002

3. Remove the metal clip edge and wire tie from the seat sensor harness. See **Fig. 3**.



Fig. 3, Metal Clip on Driver Seat Sensor Harness

4. Install a new plastic clip edge (part number 23-13477-010) as shown in Fig. 4.



Fig. 4, Plastic Clip Edge (Tie Strap) Mounting

07/15/21
CAL FTL 91-002

5. Fasten the driver seat sensor harness using the new plastic clip edge. Clip any excess wire as shown in Fig. 5.



Fig. 5, Proper Clipping and Routing of Harness Driver Seat Sensor