

Airstream Service Bulletin

Bulletin Number: #185

Product Line: Airstream Atlas & Interstate 19 with AGM Batteries

Subject: Magnum 1000W Inverter/Charger Settings, Battery Cable Inspection & Fuse Replacement

Operation Code: TCSBR8383079

Labor rate will be: 1 hour

The following procedures should be performed to verify the Magnum Inverter Charger MMS1012-G has the proper battery charge settings, fuses, and wiring for AGM batteries. Follow the steps listed below to verify the charger settings and wiring are correct to obtain the best results from the Magnum system.

RANGE OF VEHICLES INVOLVED:

Atlas MY 2020 and MY 2021 with AGM Batteries

Interstate 19 MY 2020 and MY 2021 with AGM Batteries

Parts Needed:

2 – 100A fuses (Part #512660-100)

Step 1:

Locate the display for the 1000W Magnum Inverter/Charger. In the Atlas, it is located in the electronics cabinet above the inverter cabinet. In the I-19, it is in the rear overhead cabinet, to the left of the CZONE display. In the Interstate 24, it is located in the overhead cabinet, behind the driver's seat.

1. Press the "Menu" button. This will display the settings individually, starting with "AC IN."
2. If a setting is incorrect, change it by pressing the "On/Off Change" button. Once the correct setting is displayed, press the "Save/Hold" button until an arrow appears, indicating the setting has saved.



Correct Settings:

01 AC IN	30 Amps
02 Search Watts	5W
03 Battery AmpHrs	200 Ah
04 Battery Type	AGM1
05 Charge Rate	80% (Atlas); 50% (I-19)
06 Low Bat Cut Out	LBCO 11.0 Vdc
07 VAC Dropout	110Vac
08 Power Save	PwrSave ON (15 min)
09 Equalize	Disabled

It has been discovered that if the 1000W Magnum Inverter/Charger is put into an overload condition, for a sustained period, there is a chance that one of the 90A fuses located near the battery's terminal can blow without the customer knowing. This would reduce the battery capacity down to a single battery. There are also instances in which the battery cables are wired incorrectly, causing one of the 90A fuses to blow as well.

By replacing the 90A fuse with a 100A fuse on both batteries, and inspecting the battery wiring, an inverter overload condition would allow the inverter to shut down prior to blowing a fuse.

Step 2:

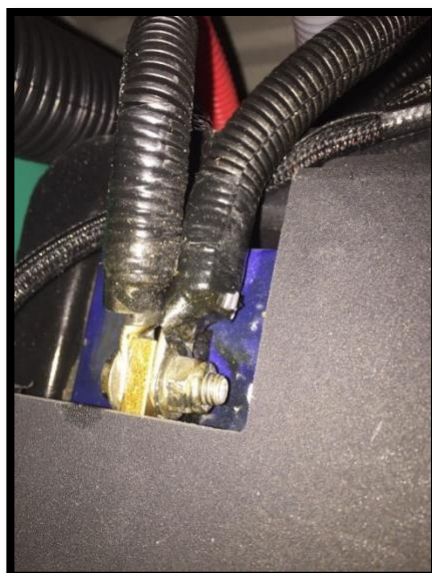
Obtain two new 100A fuses (P/N 512660-100). Remove the Mercedes ground, located behind a plastic cover next to the foot pedals. Push the red button in while pulling the ground cable out, to disconnect.

NOTE: Use extreme caution when performing these steps to prevent shorting the batteries to ground. For units with metal battery covers, removal of the covers should be performed.



Step 3:

If available, place the vehicle on a vehicle lift for easy access. Remove the black ground cable from both house batteries before proceeding further.



Step 4:

- Locate the CS battery and remove the cross-car cable from the positive battery post with the 90A fuse.
- Remove the 90A fuse and replace it with a 100A fuse. Reinstall the cross-car cable and torque the battery terminal nut to 75 inch-lbs.
- Locate the RS battery and remove the cross-car cable and cable #14 from the positive battery post with the 90A fuse.
- Remove the 90A fuse and replace it with a 100A fuse. Reinstall the cross-car cable and cable #14, and torque the battery terminal nut to 75 inch-lbs.
- Locate the cable from the DC-DC converter, going up towards the driver's seat, and ensure it is connected to the 50A fuse in the fuse block, located under the driver's seat.

NOTE: the 100A fuse must be closer to the battery terminal than the 50A fuse since it is of a higher rating.



Step 5:

Locate the cable from the generator and ensure it is connected to the 200A fuse (150A fuse for I-19's) in the fuse block.

NOTE: On I-19's, ensure a 150A fuse (orange) is used and not a 200A fuse (blue). In all cases, ensure the 150A or 200A fuse is the one closest to the battery terminal, as they are both of higher ratings than the 100A fuse.

Step 6:

Reconnect the ground cables to the house batteries, torquing the nuts to 108 inch-lbs. (9 ft-lbs.). Remember to put the fuse covers back on.

Lower the vehicle to the ground and reconnect the Mercedes ground, located next to foot pedals.

