



# Service Bulletin

Bulletin No.: 21-NA-088

Date: May, 2021

## TECHNICAL

**Subject:** Check Engine Light Displayed on Driver Information Center (DIC), Engine Cooling Fan Windmilling, DTC P0494 Set

Brand:	Model:	Model Year:		VIN:		Engine:	Transmission:
		from	to	from	to		
Buick	Enclave	2021	2021	—	—	3.6L (LFY)	—
Cadillac	XT5	2020	2021			3.6L (LGX)	
	XT6	2021	2021			3.6L (LGX)	
Chevrolet	Blazer	2020	2021			3.6L (LGX)	
	Traverse	2021	2021			3.6L (LFY)	
GMC	Acadia	2020	2021			3.6L (LGX)	

Involved Region or Country	North America, Europe, Russia, Middle East, Israel, Palestine, Japan, Australia/New Zealand
Condition	Some customers may comment on a Check Engine light displayed in the DIC and experiencing no driving issues.
Cause	The cause of the condition may be ECM calibration timing causing the MIL to set during "windmilling" of cooling fan, especially at restart during a stop/start event. If this occurs on two consecutive ignition cycles, the technician may find DTC P0494 set current or in recent history.
Correction	Reprogram the engine control module (ECM).

### Service Procedure

**Caution:** Before downloading the update files, be sure the computer is connected to the internet through a network cable (hardwired). DO NOT DOWNLOAD or install the files wirelessly. If there is an interruption during programming, programming failure or control module damage may occur.

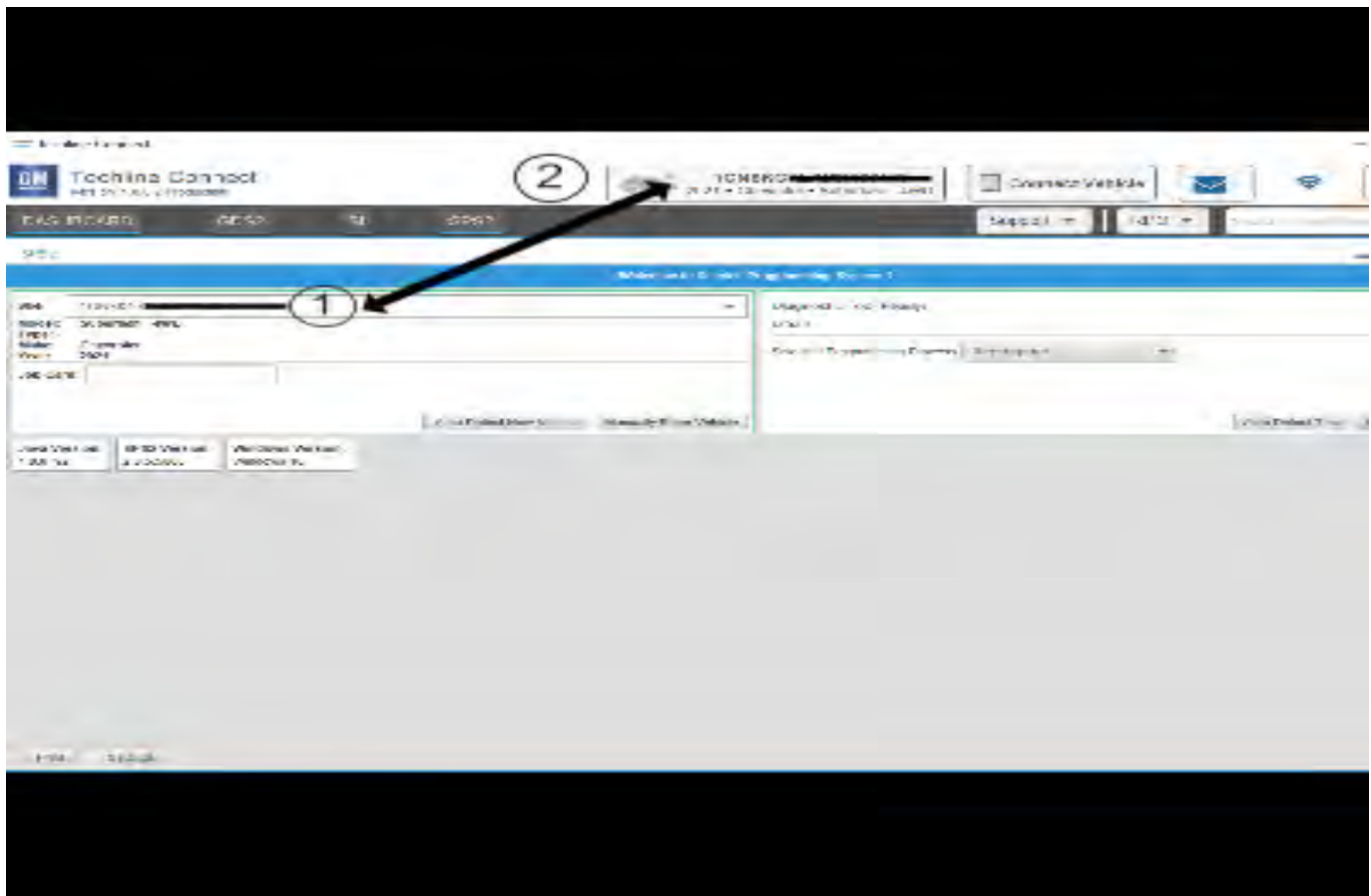
**Note:** Carefully read and follow the instructions below.

- Ensure the programming tool is equipped with the latest software and is securely connected to the data link connector. If there is an interruption during programming, programming failure or control module damage may occur.
- Stable battery voltage is critical during programming. Any fluctuation, spiking, over voltage or loss of voltage will interrupt

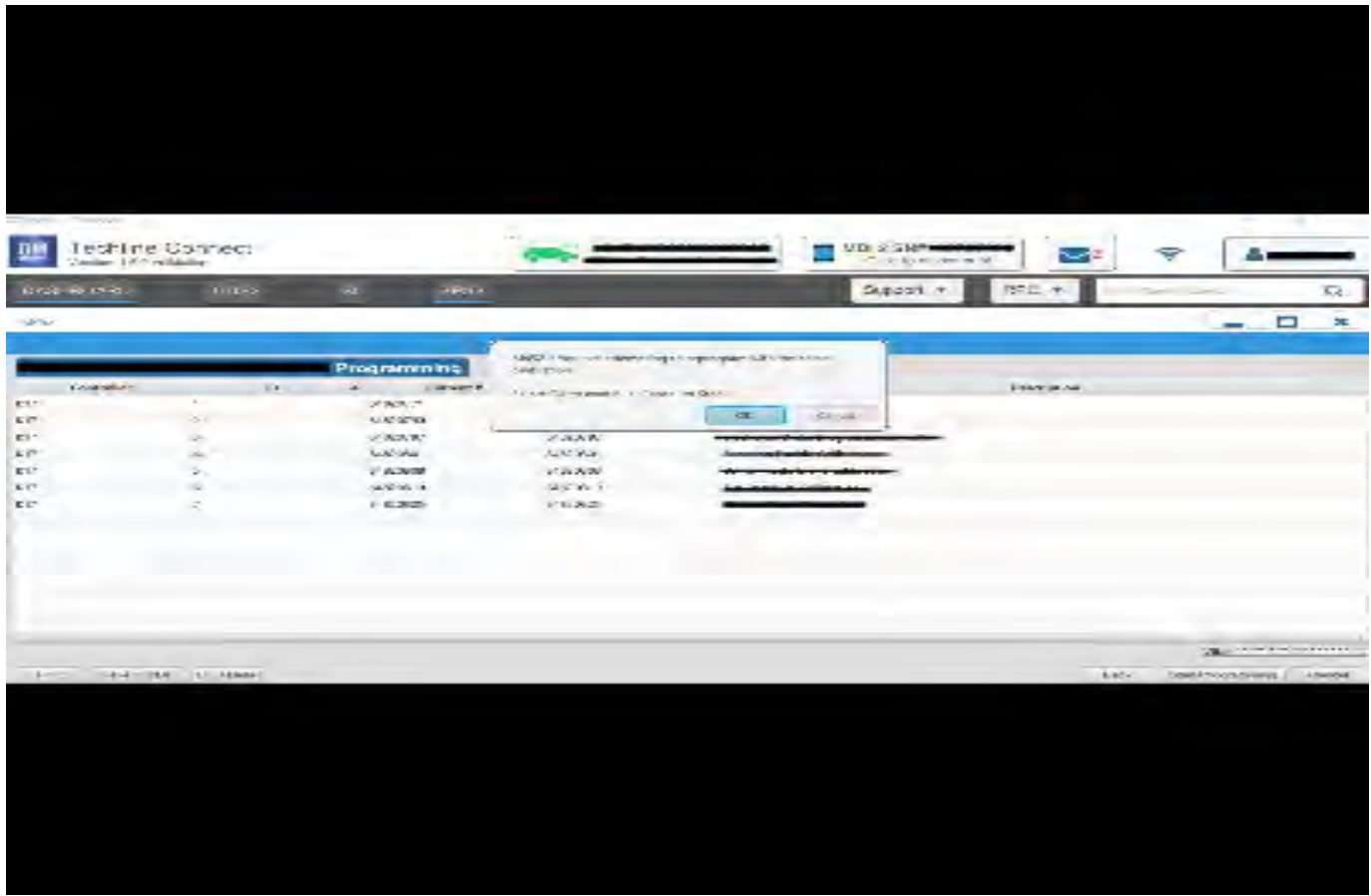
programming. Install a GM Authorized Programming Support Tool to maintain system voltage. Refer to [www.gmdesolutions.com](http://www.gmdesolutions.com) for further information. If not available, connect a fully charged 12V jumper or booster pack disconnected from the AC voltage supply. DO NOT connect a battery charger.

- Turn OFF or disable systems that may put a load on the vehicles battery such as; interior lights, exterior lights (including daytime running lights), HVAC, radio, etc.
- Clear DTCs after programming is complete. Clearing powertrain DTCs will set the Inspection/Maintenance (I/M) system status indicators to NO.

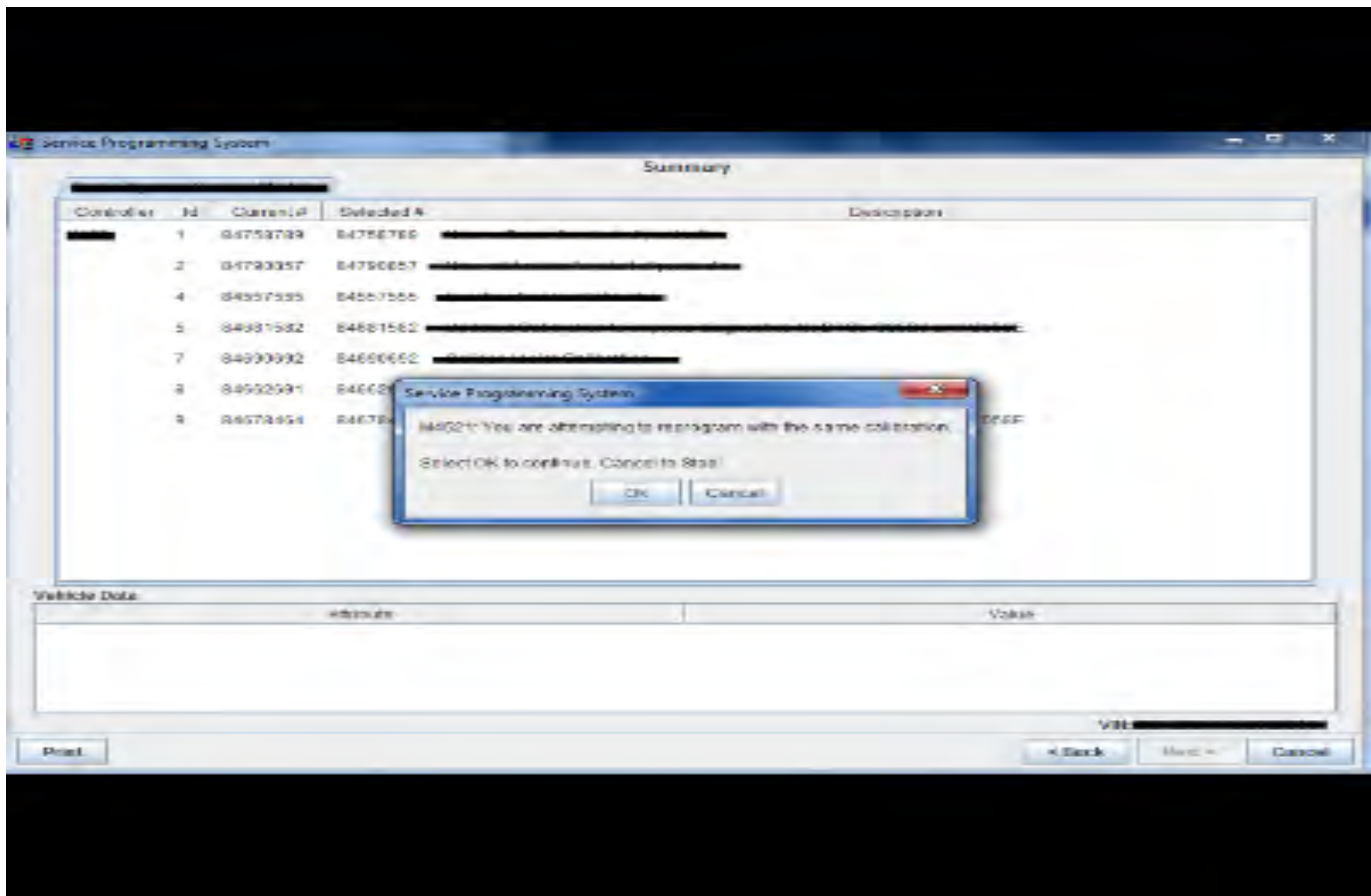
**Caution:** Be sure the VIN selected in the drop down menu (1) is the same as the vehicle connected (2) before beginning programming.



5743643



5644477



5431207

**Important:** Techline Connect and TIS2WEB screens shown above.

**Important:** If the same calibration/software warning is noted on the TLC or SPS Summary screen, select OK and follow screen instructions. After a successful programming event, the WCC is located in the Service Programming System dialogue box of the SPS Summary screen. No further action is required. Refer to the Warranty Information section of this bulletin.

**Important:** When programming a module in GM's new Vehicle Intelligence Platform, or VIP, the power mode (ignition) needs to be off or errors may occur. This involves the 2020 Chevrolet Corvette, Cadillac CT5 and CT4, as well as the upcoming full-size Chevrolet, GMC, Cadillac SUVs and Buick Envision. Serial Data Message Authentication also needs to have the ignition off.

1. Reprogram the Engine Control Module. Refer to *K20 Engine Control Module: Programming and Setup* in SI.



**Action Complete**

2015-05-15 11:30:22 -0400

**Warranty Claim Code: 1121989412**

This code is for use in creating repair order (RPO).

**Important Notes/Remarks:**

The Warranty Claim code is a required or optional programming that have completed, but must be using Warranty Claim Code only results in successful warranty claim.

Warranty code creation (RPO) is required to be received through "Service" or "RPO" report.

Follow the Controller Specific Instructions below.

1. Run the Controller Specific Instructions, fully update all the S-Cards to the existing controller.

Monitoring Controller Specific Instructions (to be completed)

Done

5431209

**Note:** The screenshots above are an example of module programming and may not be indicative of the specific module that is being programmed. Module selection and VIN information have been blacked out.

**Important:** To avoid warranty transaction rejections, you **MUST** record the warranty claim code provided on the SPS Warranty Claim Code (WCC) screen shown above on the job card. Refer to callout 1 above for the location of the WCC on the SPS screen.

- Record the SPS Warranty Claim Code on the job card for warranty transaction submission.

## Warranty Information

For vehicles repaired under the Emission coverage, use the following labor operation. Reference the Applicable Warranties section of Investigate Vehicle History (IVH) for coverage information.

**Important:** Warranty coverage code E2 applies for this module programming event. ECM reprogramming is covered for 8 years/80,000 miles (U.S.) or 8 years/130,000 km (Canada).

Labor Operation	Description	Labor Time
2887228*	ECM Reprogramming with SPS for DTC P0494	0.3 hr

\*This is a unique Labor Operation for bulletin use only.

**Important:** To avoid warranty transaction rejections, carefully read and follow the instructions below:

- The Warranty Claim Code must be accurately entered in the "SPS Warranty Claim Code" field of the transaction.
- When more than one Warranty Claim Code is generated for a programming event, it is required to document all Warranty Claim Codes in the "Correction" field on the job card. Dealers must also enter one of the codes in the "SPS Warranty Claim Code" field of the transaction, otherwise the transaction will reject. It is best practice to enter the FINAL code provided by SPS/SPS2.

## Warranty Claim Code Information Retrieval

If the SPS Warranty Claim Code was not recorded on the Job Card, the code can be retrieved in the SPS system as follows:

- Open TLC/TIS on the computer used to program the vehicle.
- Select and start SPS/SPS2.
- Select Settings.
- Select the Warranty Claim Code tab.

The VIN, Warranty Claim Code and Date/Time will be listed on a roster of recent programming events. If the code is retrievable, dealers should resubmit the transaction making sure to include the code in the SPS Warranty Claim Code field.

Version	2
Modified	Released April 09, 2021 May 03, 2021 – Added the 2021 Buick Enclave, Cadillac XT6 and Chevrolet Traverse models and updated the Engine column in Models table.

