



Service Bulletin

Bulletin No.: 20-NA-178

Date: May, 2021

TECHNICAL

Subject: Service Driver Assist and/or Take Steering Messages on Start-up, Advanced Driver Assist Systems (ADAS) Features Not Available

Brand:	Model:	Model Year:		VIN:		Engine:	Transmission:
		from	to	from	to		
Cadillac	CT4	2020	2021	—	—	All	All
	CT5						
Chevrolet	Suburban	2021	2021	—	—	All	All
	Tahoe						
GMC	Yukon	2021	2021	—	—	All	All
	Yukon XL						

Involved Region or Country	North America, Colombia, Israel, Middle East, Cadillac Korea (South Korea), China
Additional Options (RPOs)	Equipped with RPO UGN
Condition	Some customers may comment on a Service Driver Assist message and Take Steering message on start-up, Advanced Driver Assist Systems (ADAS) features are not available during this time. During this condition, the Image Processing Module becomes stuck in a continuous reset state on power up, causing it to be inoperable and stop all communication.
Cause	The cause of the condition may be a software anomaly.
Correction	Action to be performed by dealer to confirm this service bulletin is applicable for the above customer concern: <ol style="list-style-type: none"> 1. Verify the Image Processing Module is not communicating on all three CAN busses (CAN1, CAN2, CAN8). 2. Verify for presence of 3 loss of Communication DTCs (U1614, U1615, U1616) set by other modules against the Image Processing Unit. 3. If step (1) and (2) are both true, the issue may be resolved by resetting the power. Either by disconnecting vehicle battery or disconnecting the fuse to the controller for 1 minute. The module should start communication once power is connected. 4. Update the K124 Image Processing Module with latest software and calibrations.

Service Procedure

Caution: Before downloading the update files, be sure the computer is connected to the internet through a network cable (hardwired). DO NOT DOWNLOAD or install the files wirelessly. If there is an interruption during programming, programming failure or control module damage may occur.

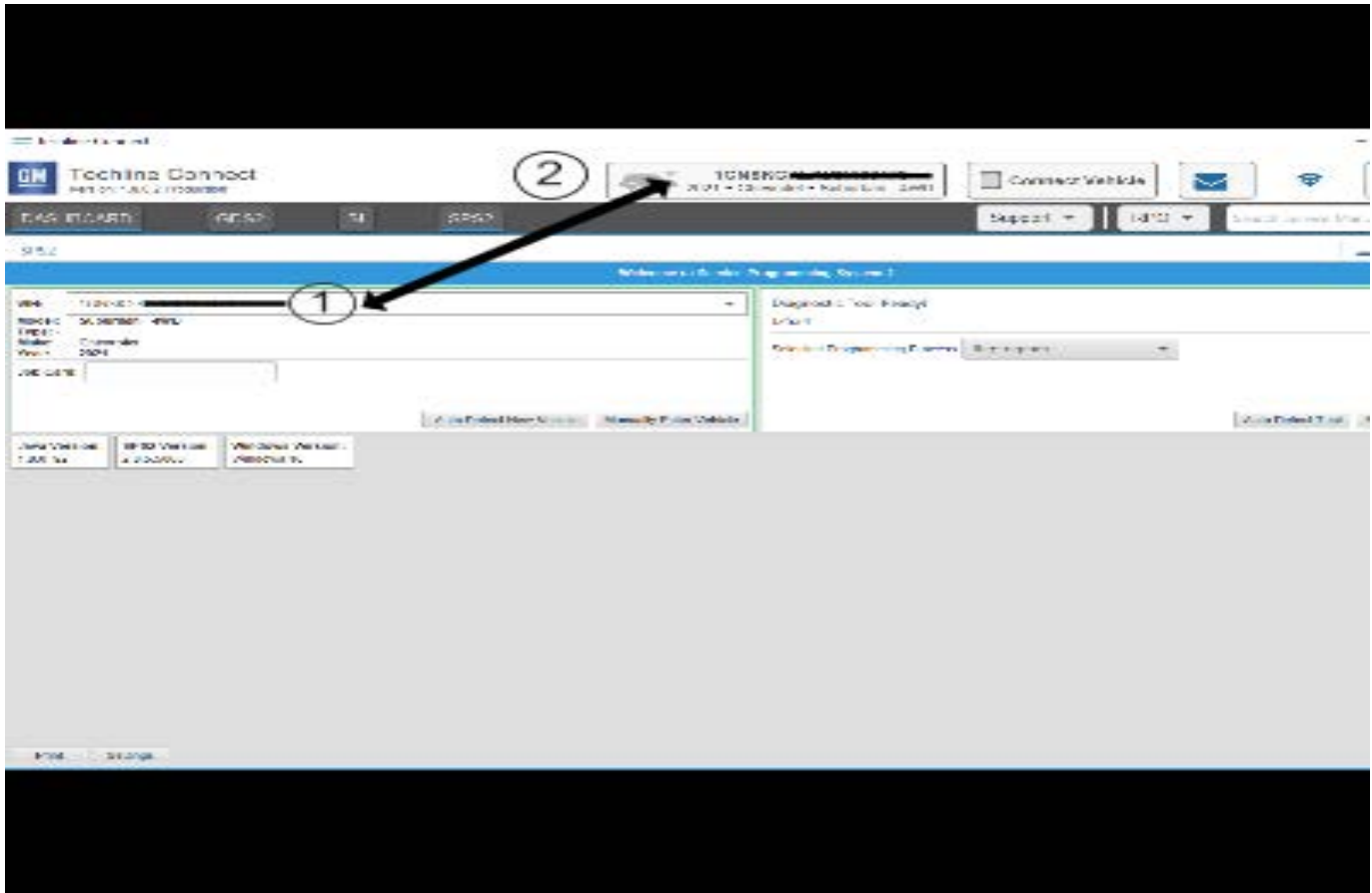
Note: Carefully read and follow the instructions below.

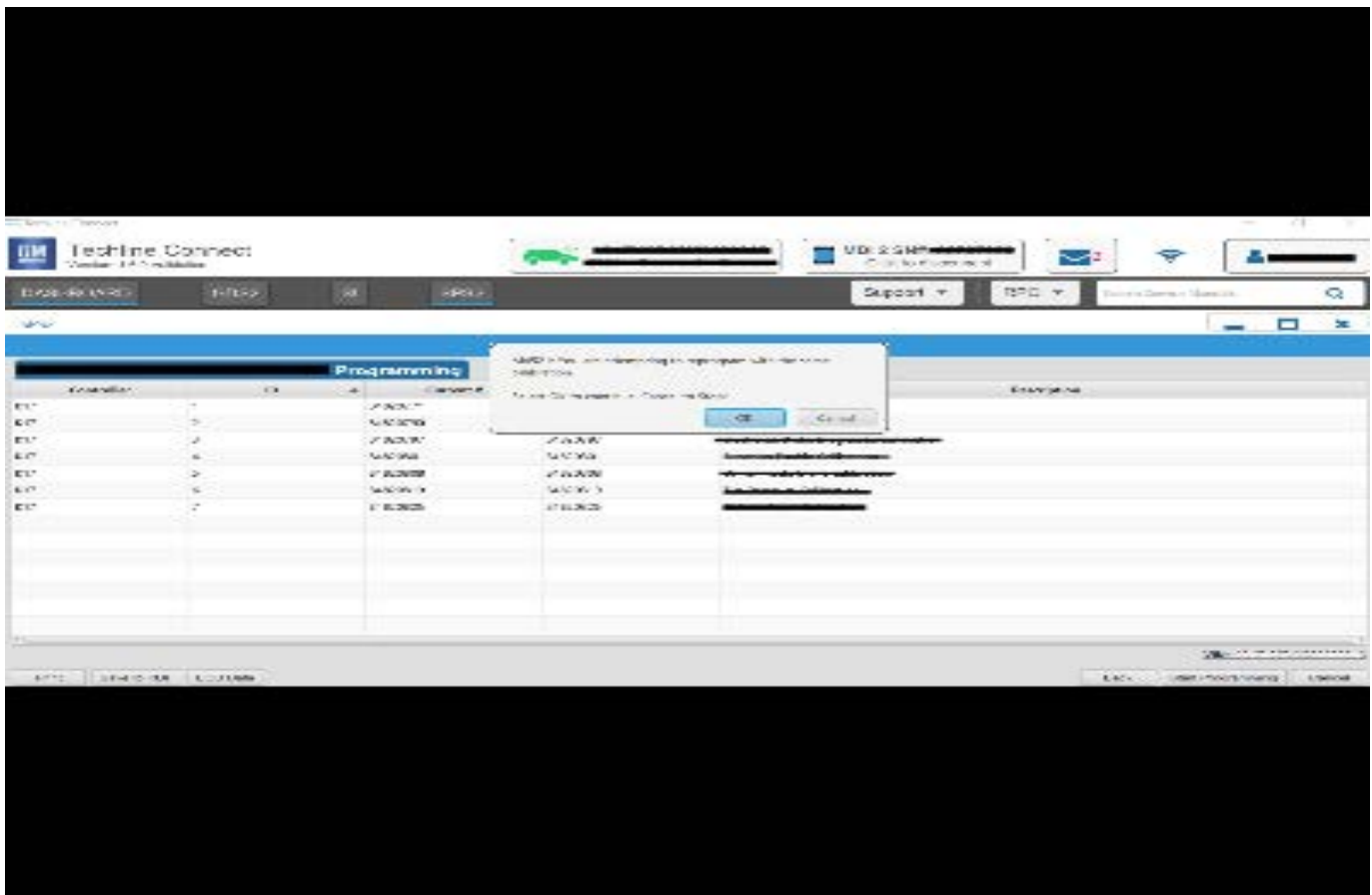
- Ensure the programming tool is equipped with the latest software and is securely connected to the data link connector. If there is an interruption during programming, programming failure or control module damage may occur.
- Stable battery voltage is critical during programming. Any fluctuation, spiking, over voltage or loss of voltage will interrupt

programming. Install a GM Authorized Programming Support Tool to maintain system voltage. Refer to www.gmdesolutions.com for further information. If not available, connect a fully charged 12V jumper or booster pack disconnected from the AC voltage supply. DO NOT connect a battery charger.

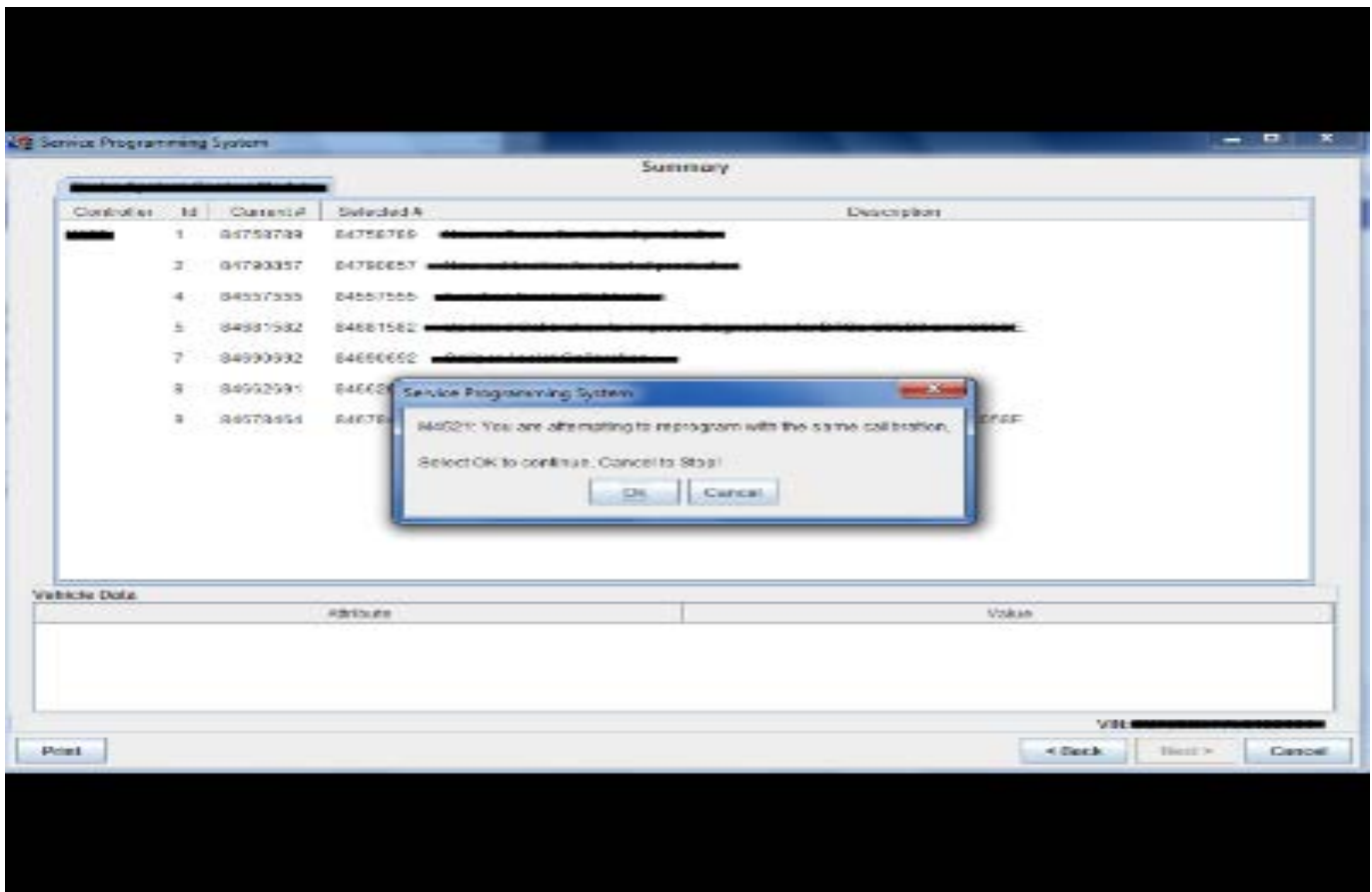
- Follow the on-screen prompts regarding ignition power mode, but ensure that anything that drains excessive power (exterior lights, HVAC blower motor, etc) is off.
- Please verify that the radio time and date are set correctly before inserting USB drive into vehicle for programming, otherwise an error will result.
- Clear DTCs after programming is complete. Clearing powertrain DTCs will set the Inspection/Maintenance (I/M) system status indicators to NO.

Caution: Be sure the VIN selected in the drop down menu (1) is the same as the vehicle connected (2) before beginning programming.





564477



5431207

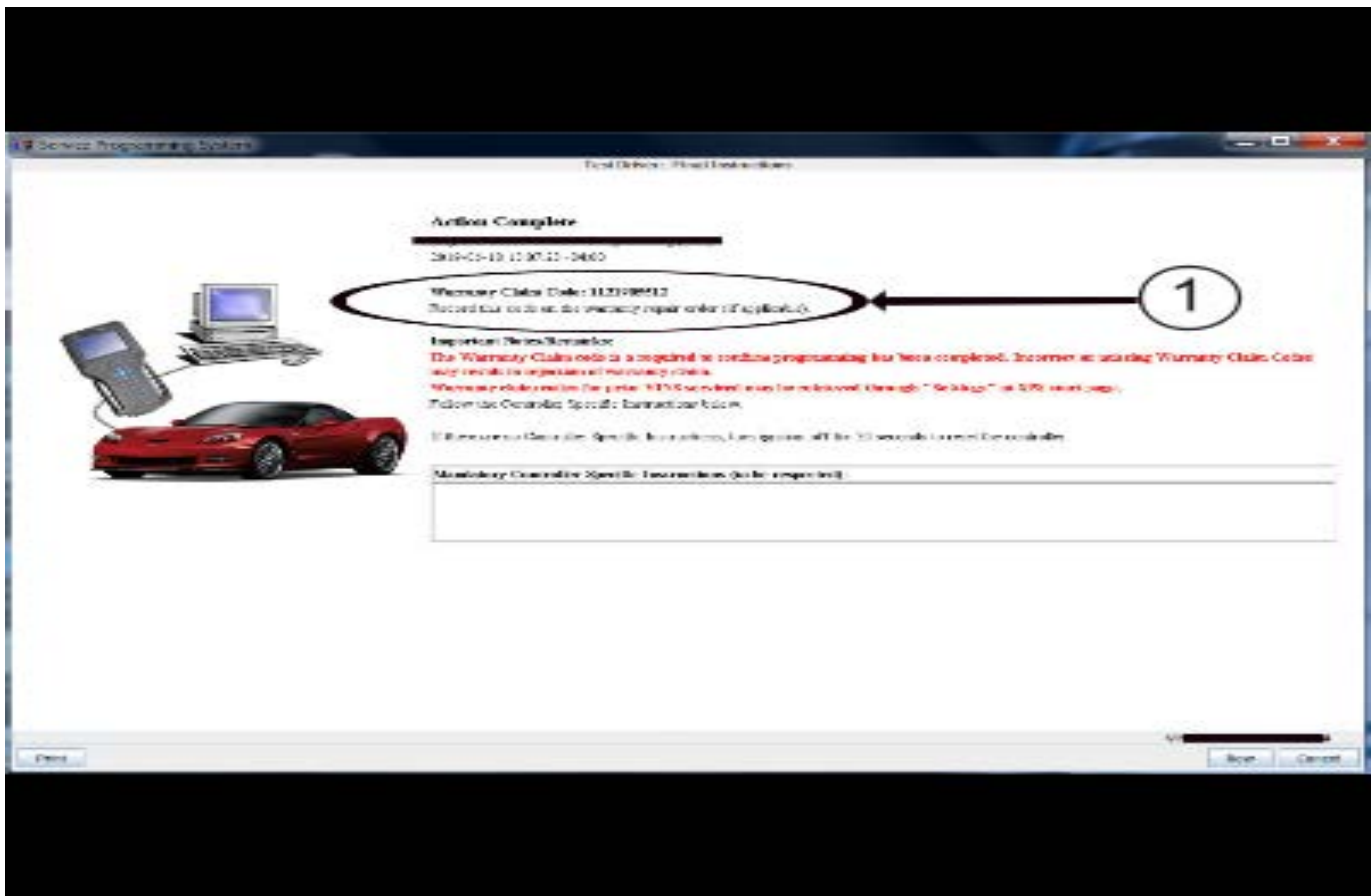
Important: Techline Connect and TIS2WEB screens shown above.

Important: If the same calibration/software warning is noted on the TLC or SPS Summary screen, select OK and follow screen instructions. After a successful programming event, the WCC is located in the Service Programming System dialogue box of the SPS Summary screen. No further action is required. Refer to the Warranty Information section of this bulletin.

Important: When programming a module in GM's new Vehicle Intelligence Platform, or VIP, the power mode (ignition) needs to be off or errors may occur. This involves the 2020 Chevrolet Corvette, Cadillac CT5 and CT4, as well as the upcoming full-size Chevrolet, GMC, Cadillac SUVs and Buick Envision. Serial Data Message Authentication also needs to have the ignition off.

1. Reprogram the Image Processing Module. Refer to *K124 Image Processing Module: Programming and Setup* in SI.





5431209

Note: The screenshots above are an example of module programming and may not be indicative of the specific module that is being programmed. Module selection and VIN information have been blacked out.

Important: To avoid warranty transaction rejections, you **MUST** record the warranty claim code provided on the SPS Warranty Claim Code (WCC) screen shown above on the job card. Refer to callout 1 above for the location of the WCC on the SPS screen.

- Record the SPS Warranty Claim Code on the job card for warranty transaction submission.

Warranty Information

For vehicles repaired under the Bumper-to-Bumper coverage (Canada Base Warranty coverage), use the following Labor Operation. Reference the Applicable Warranties section of Investigate Vehicle History (IVH) for coverage information.

Labor Operation	Description	Labor Time
2886998*	Reprogram Image processing Unit for continuous reset with SPS	0.3 hr
*This is a unique Labor Operation for bulletin use only.		
<p>Important: To avoid warranty transaction rejections, carefully read and follow the instructions below:</p> <ul style="list-style-type: none"> The SPS Warranty Claim Code must be accurately entered in the "SPS Warranty Claim Code" field of the transaction. When more than one Warranty Claim Code is generated for a programming event, it is required to document all Warranty Claim Codes in the "Correction" field on the job card. Dealers must also enter one of the codes in the "SPS Warranty Claim Code" field of the transaction, otherwise the transaction will reject. It is best practice to enter the FINAL code provided by SPS/SPS2. 		

Warranty Claim Code Information Retrieval

If the SPS Warranty Claim Code was not recorded on the Job Card, the code can be retrieved in the SPS system as follows:

1. Open TLC/TIS on the computer used to program the vehicle.
2. Select and start SPS/SPS2.
3. Select Settings.
4. Select the Warranty Claim Code tab.

The VIN, Warranty Claim Code and Date/Time will be listed on a roster of recent programming events. If the code is retrievable, dealers should resubmit the transaction making sure to include the code in the SPS Warranty Claim Code field.

Version	2
Modified	Released September 09, 2020 May 14, 2021 – Added Additional Option RPO UGN, removed Europe from Involved Region or Country section and updated programming procedure.

