

Technical Service Bulletin

Mazda North American Operations
Irvine, CA 92618-2922

**Subject:**

GRINDING NOISE FROM REAR BRAKES

Bulletin No.: 04-002/21

Last Issued : 06/04/2021

BULLETIN NOTES

This bulletin supersedes the previously issued bulletin(s) listed below. The changes are noted in Red text.

Previous TSBs:	Date(s) Issued:
04-007/20	11/09/20 and 10/12/20

APPLICABLE MODEL(S)/VINS**US Spec.:**

2019-2020 CX-3 vehicles with VINs lower than JM1DK*****470844 (produced before Jan. 31, 2020)
2016 CX-5 vehicles with VINs lower than JM3KE*****921726 (produced before Dec. 21, 2016)
2017-2020 CX-5 vehicles with VINs lower than JM3KF*****820235 (produced before Mar. 18, 2020)
2016-2019 CX-9 vehicles with VINs lower than JM3TC*****337679 (produced before Oct. 31, 2019)
2016 Mazda6 vehicles with VINs lower than JM1GJ*****488592 (produced before Jun. 30, 2016)
2017-2020 Mazda6 vehicles with VINs lower than JM1GL*****523660 (produced before Mar. 13, 2020)

Mexico Spec.:

2016-2017 CX-5 vehicles with VINs lower than JM3KE*****921726 (produced before Dec. 21, 2016)
2018-2020 CX-5 vehicles with VINs lower than JM3KF*****820235 (produced before Mar. 18, 2020)
2017-2020 Mazda6 vehicles with VINs lower than JM1GL*****523373 (produced before Feb. 28, 2020)

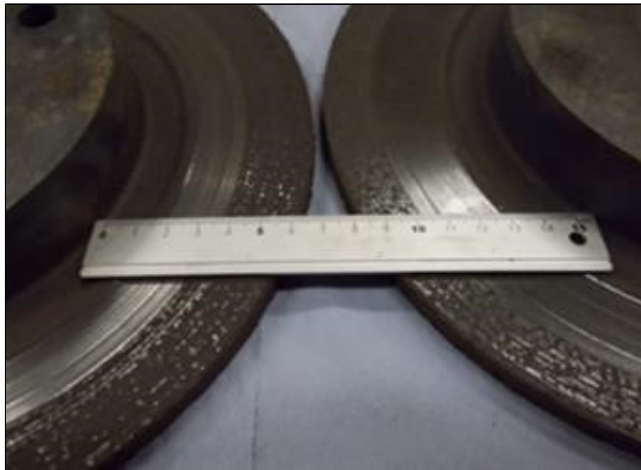
DESCRIPTION

Some vehicles equipped with electric parking brake (EPB) may exhibit a grinding noise from the rear brakes when braking. This may be caused by the rear brake pads not having the capability to remove the rust from the rear brake discs. The red rust accumulated on the discs is exposed to high temperatures during braking, and consequently the rust turns black. As the black rust is too hard to be removed by the brake pads, the rust progress is accelerated, resulting in the grinding noise.

To eliminate this concern, the brake pad material has been changed in order to improve the rust-removing capability.

Page 1 of 4

CONSUMER NOTICE: The information and instructions in this bulletin are intended for use by skilled technicians. Mazda technicians utilize the proper tools/ equipment and take training to correctly and safely maintain Mazda vehicles. These instructions should not be performed by "do-it-yourselfers." Customers should not assume this bulletin applies to their vehicle or that their vehicle will develop the described concern. To determine if the information applies, customers should contact their nearest authorized Mazda dealership. Mazda North American Operations reserves the right to alter the specifications and contents of this bulletin without obligation or advance notice. All rights reserved. No part of this bulletin may be reproduced in any form or by any means, electronic or mechanical---including photocopying and recording and the use of any kind of information storage and retrieval system ---without permission in writing.



Outer Side



Inner Side

Customers having this concern should have their vehicle repaired using the following repair procedure.

NOTE: For 2016-2020 CX-5 / CX-9 vehicles with rear brake disc grooves, refer to TSB 04-003/20 - GROOVES ON REAR BRAKE DISC PLATES

REPAIR PROCEDURE

1. Verify the customer concern.
2. Replace the rear brake pads with modified ones according to MGSS online:
 - CX-3: REAR BRAKE DISC PAD REMOVAL/INSTALLATION
 - CX-5: REAR BRAKE DISC PAD REMOVAL/INSTALLATION
 - CX-9: REAR BRAKE DISC PAD REMOVAL/INSTALLATION
 - Mazda6: REAR BRAKE DISC PAD REMOVAL/INSTALLATION
3. Replace the rear disc plates with new ones according to the MGSS online:
 - CX-3: REAR BRAKE DISC REMOVAL/INSTALLATION
 - CX-5: REAR BRAKE DISC REMOVAL/INSTALLATION
 - CX-9: REAR BRAKE DISC REMOVAL/INSTALLATION
 - Mazda6: REAR BRAKE DISC REMOVAL/INSTALLATION

NOTE: If an on-car brake lathe is available, disc plates may be machined instead of replaced.

- 4 Verify the repair.

PARTS INFORMATION

Parts Number	Description	Qty.	Notes
--------------	-------------	------	-------

CONSUMER NOTICE: The information and instructions in this bulletin are intended for use by skilled technicians. Mazda technicians utilize the proper tools/ equipment and take training to correctly and safely maintain Mazda vehicles. These instructions should not be performed by "do-it-yourselfers." Customers should not assume this bulletin applies to their vehicle or that their vehicle will develop the described concern. To determine if the information applies, customers should contact their nearest authorized Mazda dealership. Mazda North American Operations reserves the right to alter the specifications and contents of this bulletin without obligation or advance notice. All rights reserved. No part of this bulletin may be reproduced in any form or by any means, electronic or mechanical---including photocopying and recording and the use of any kind of information storage and retrieval system ---without permission in writing.

DHYG-26-43Z	Pad Set, RR Caliper	1	CX-3
B45G-26-251B	Plate, Disc	0 or 2	
GDYL-26-43Z	Pad Set, RR Caliper	1	Mazda6
GHT2-26-251	Plate, Disc	0 or 2	
TAY0-26-48Z	Pad Sub Set, RR Caliper	1	CX-9
TK78-26-251A	Plate, Disc	0 or 2	
KBY6-26-48Z	Pad Sub Set, RR Caliper	1	CX-5
K011-26-251C	Plate, Disc	0 or 2	

WARRANTY INFORMATION

NOTE:

- This warranty information applies only to verified customer complaints on vehicles eligible for warranty repair.
- This repair will be covered under Mazda's New Vehicle Limited Warranty term.
- Additional diagnostic time cannot be claimed for this repair.

	If brake discs are REPLACED
Warranty Type	A
Symptom Code	53
Damage Code	9Y
Part Number Main Cause	7777-SP-S18
Quantity	0
Operation Number / Labor Hours:	Pad Set Replacement (Both Sides) AND Brake Disc Replacement (Both Sides) P0208*RX / 0.6 to 0.7 Hrs. (*1)

*1: Submit an applicable labor time by referring to the SRT manual.

NOTE: All replaced parts are to be claimed as related parts.

	If brake discs are MACHINED
Warranty Type	A
Symptom Code	53
Damage Code	9Y

CONSUMER NOTICE: The information and instructions in this bulletin are intended for use by skilled technicians. Mazda technicians utilize the proper tools/ equipment and take training to correctly and safely maintain Mazda vehicles. These instructions should not be performed by "do-it-yourselfers." Customers should not assume this bulletin applies to their vehicle or that their vehicle will develop the described concern. To determine if the information applies, customers should contact their nearest authorized Mazda dealership. Mazda North American Operations reserves the right to alter the specifications and contents of this bulletin without obligation or advance notice. All rights reserved. No part of this bulletin may be reproduced in any form or by any means, electronic or mechanical---including photocopying and recording and the use of any kind of information storage and retrieval system ---without permission in writing.

Part Number Main Cause	7777-SP-S18
Quantity	0
Operation Number / Labor Hours:	Pad Set Replacement (Both Sides) AND Brake Disc Machining (Both Sides) P0214*MX / Max. 1.2 to 1.3 Hrs. (*1)

*1: Submit an applicable labor time by referring to the SRT manual.

NOTE: Take the necessary procedures for the actual time submission according to the Warranty Policy & Procedures Manual.

CONSUMER NOTICE: The information and instructions in this bulletin are intended for use by skilled technicians. Mazda technicians utilize the proper tools/ equipment and take training to correctly and safely maintain Mazda vehicles. These instructions should not be performed by "do-it-yourselfers." Customers should not assume this bulletin applies to their vehicle or that their vehicle will develop the described concern. To determine if the information applies, customers should contact their nearest authorized Mazda dealership. Mazda North American Operations reserves the right to alter the specifications and contents of this bulletin without obligation or advance notice. All rights reserved. No part of this bulletin may be reproduced in any form or by any means, electronic or mechanical---including photocopying and recording and the use of any kind of information storage and retrieval system ---without permission in writing.