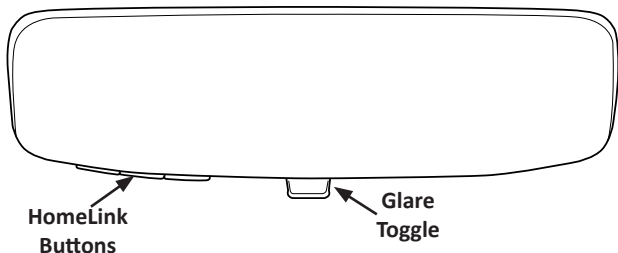


Genuine Accessories



Volkswagen

Congratulations! Your new automobile is equipped with a frameless rearview mirror from Volkswagen Accessories. This mirror is equipped with HomeLink, a programmable transmitter for operating garage doors, security gates, and more.



The HomeLink feature on this mirror is powered by a non-serviceable, long-life, lithium metal battery. Ensure proper disposal of the lithium metal battery in accordance with all federal and local laws.

Proper Setup

With the glare toggle pushed away from the driver, adjust the mirror so that the driver has a clear, unobstructed view through the rear windshield.

When experiencing unwanted headlight glare from other vehicles, pulling the glare toggle toward the driver will decrease the amount of light reflected back toward the driver.

Programming a HomeLink Button

Generic programming steps for HomeLink can be found on the back of this guide; for Genie and Sommer garage door openers please go directly to the HomeLink website.

Additional information and programming videos can be found at www.HomeLink.com, www.youtube.com/HomeLinkGentex, scanning the QR code to the right, or by calling the toll-free HomeLink-hotline at 1-800-355-3515.



"Volkswagen" and the Volkswagen logo are registered trademarks of Volkswagen AG.

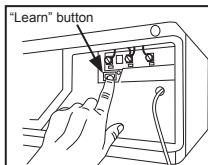
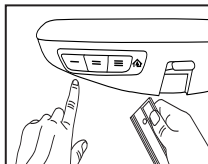
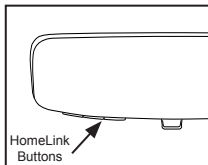
HomeLink® and the HomeLink House® logo are registered trademarks of Gentex Corporation.



HomeLink Quick Reference Guide

Your new mirror also comes integrated with HomeLink®. The HomeLink wireless control system provides a convenient way to replace up to three handheld radio frequency remotes used to activate devices such as gate operators, garage door openers, entry door locks, security systems, and even home lighting.

1. Before programming, press the HomeLink button you would like to program and observe the indicator light. The indicator light will flash slowly if ready to program. If not, refer to "Erasing HomeLink Buttons".
2. Position the handheld remote (garage door opener) 1–3 inches (2–8 cm) away from the HomeLink button you would like to program.
3. While the HomeLink indicator light is flashing slowly, press and hold the handheld remote (garage door opener remote) button until the HomeLink indicator light begins to flash rapidly or stay on solid.
4. Press and release your trained HomeLink button.
 - a. If the indicator light is solid/continuous, programming is complete, and pressing the trained HomeLink button should now activate your garage door.
 - b. If the indicator light blinks rapidly, proceed to step 5
5. At the garage door opener motor, (security gate motor, etc...) locate the "learn", "smart", or "program" button. Press and release the button. Once the button is pressed, there are 30 seconds in which to complete the next step.
6. Press and release the HomeLink button up to three times to complete the training process. Programming should now be complete and your device should operate when the HomeLink button is pressed.



Erasing HomeLink Buttons

Press and hold buttons one and three (outer buttons) for 10 seconds, until the HomeLink indicator light changes from solid to flashing slowly.

Battery Life and Disposal of Lithium (Li) Batteries

This product contains a lithium battery which will not last indefinitely. At product end of life, the battery should be removed and disposed of properly. Regulations and laws pertaining to the recycling and disposal of Li batteries vary from country to country as well as by state and local governments. You should check the laws and regulations where you live.

