 <b>HYUNDAI</b> <b>Technical Service Bulletin</b>	<b>GROUP</b> <b>General Information</b>	<b>NUMBER</b> <b>21-GI-005H</b>
	<b>DATE</b> <b>May, 2021</b>	<b>MODEL(S)</b> <b>Elantra (CN7/CN7A)</b>
<b>SUBJECT:</b> WINDOW MOUNTED LOCKBOX MAY CAUSE BATTERY DRAIN		

**Description:** This bulletin provides information regarding the use of window mounted lockboxes without RFID shielding, which may cause battery drain on dealer stock vehicles. The lockbox is still within the range of the receiver when it is mounted to the rear window. This will cause the key fob to continuously transmit a RF (radio frequency) to the receiver. It is recommended to use a lockbox with RFID shielding to block the RF signal and prevent battery drain.

**Applicable Vehicles:** Certain 2021MY and forward Elantra (CN7/CN7A) vehicles.



**Warranty Information:**

Battery drain or window seal damage caused by lockboxes may void the factory warranty.

## SUBJECT: WINDOW MOUNTED LOCKBOX MAY CAUSE BATTERY DRAIN

1. Some dealers use window mounted lockboxes on the vehicles at the dealer lot or at offsite storage.



2. It is recommended to use lockboxes with RFID shielding to prevent vehicle and key fob battery drain.

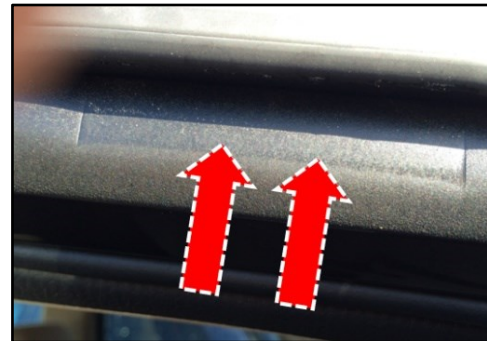
### NOTICE

When the lockbox is mounted to the rear window, the key fob will continuously transmit a RF signal because it is still within the range of the receiver.

This may drain the vehicle battery and the key fob battery.



3. Prolonged use of window mounted lockboxes may cause damage to the window run seal, leading to air leak and wind noise.



4. It is not recommended to use window mounted lockboxes for more than 24 hours to prevent permanent seal damage.

### NOTICE

Damage or wind noise related repairs resulting from the use of a lockbox are not covered under warranty. Parts may be called back for inspection by the Warranty Technical Center and the claim will be subject to charge back.

