



GROUP	MODEL
ELE	2021MY K5 (DL3a) 2020-2021MY Telluride (ON)
NUMBER	DATE
242	June 2021

TECHNICAL SERVICE BULLETIN

SUBJECT: HEADLAMP SOFT CONNECTION INSPECTION

This bulletin provides information to inspect and ensure proper internal connections of the headlamp on some 2021MY K5 (DL3a) vehicles produced from March 27, 2020 through April 14, 2021 and some 2020-2021MY Telluride (ON) vehicles produced from January 9, 2019 through April 12, 2021, which may exhibit inoperative/intermittently inoperative LED low beam or Daytime Running Lights (DRL) on K5, or low/sub-low beam on Telluride. Before replacing the headlamp for these conditions, follow the procedure outlined in this publication to inspect and ensure proper headlamp connections. Performing these procedures may correct the concerns without having to replace the headlamp.

Model Year	Model	Headlamp Type	Concern
2021	K5 (DL3a)	All	Inoperative (or intermittently inoperative) Low Beam or Daytime Running Lights (DRL)
2020-2021	Telluride (ON)	Only LED Type	Inoperative (or intermittently inoperative) Low Beam or Sub-Low Beam



K5 Headlamp & DRL



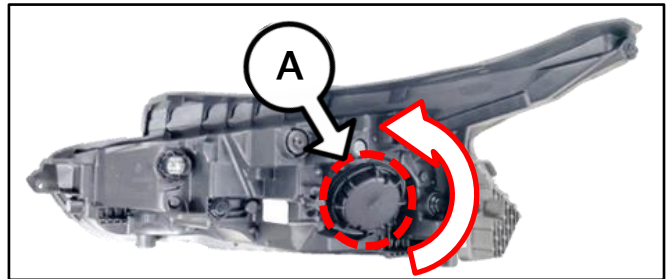
Telluride Headlamp

K5 Wiring Inspection Procedure: LED Strip & Low/High Beam Connection

1. Remove the headlamp from the vehicle by referring to the "Body Electrical System → Lighting System → Headlamps → Repair procedures" chapter in the applicable Shop Manual on KGIS.



2. Remove the dust cover (A) by turning it counterclockwise.

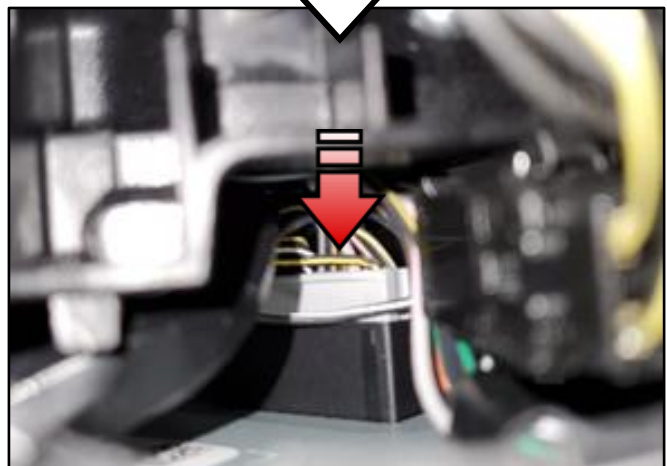
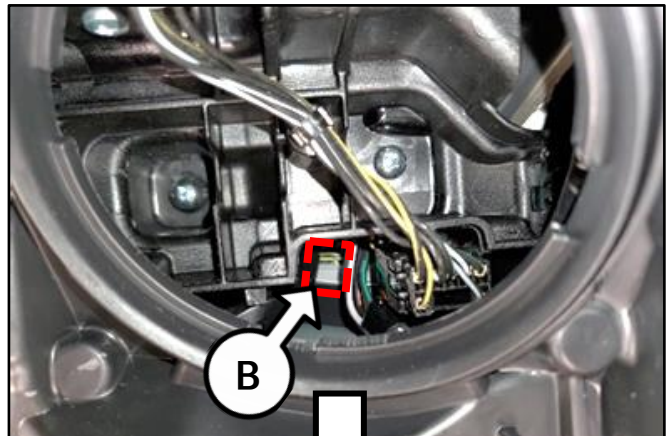


3. After the dust cover is removed, look for the LED Drive Module (LDM) connector (B) (white connector) at the bottom of the opening.

Using a flathead screwdriver, press down the connector until it is fully seated.

CAUTION

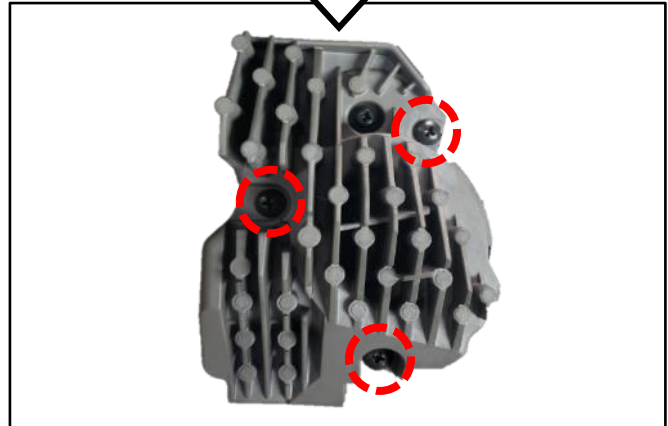
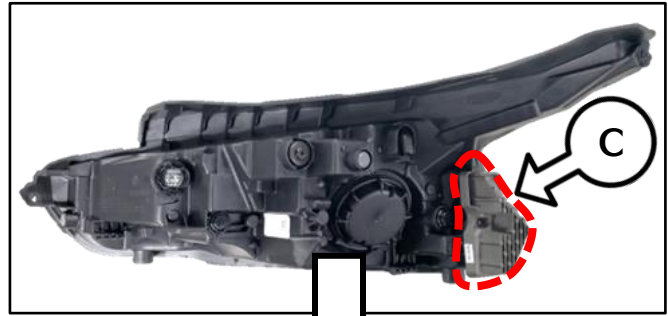
Be careful not to pinch the wires when pressing down with the screwdriver.



SUBJECT:

HEADLAMP SOFT CONNECTION INSPECTION

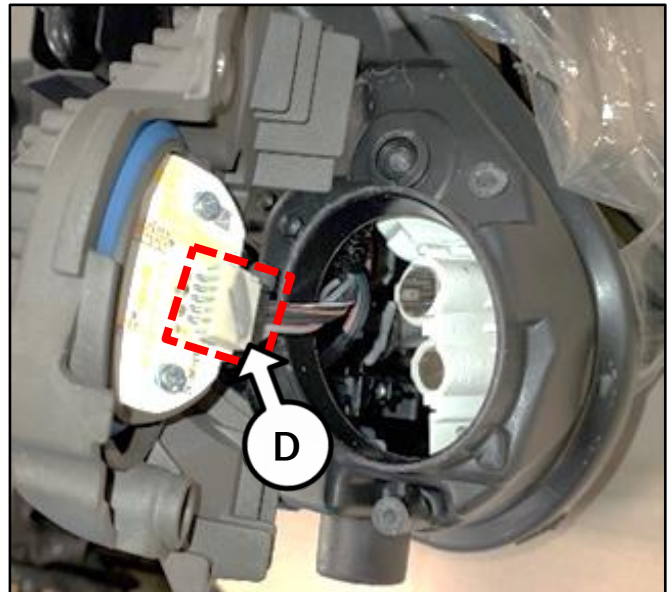
4. Remove the three (3) screws that attach the heat sink (C) to the housing.



5. Carefully pull the heat sink off the housing.

⚠ CAUTION

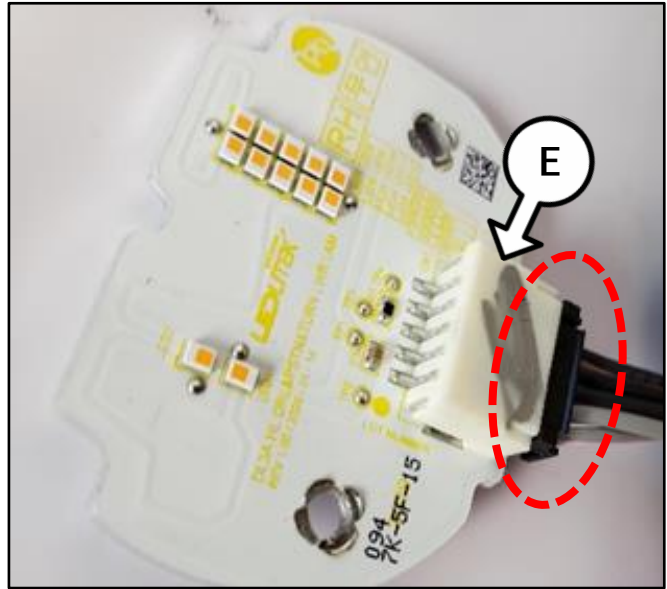
Be careful not to damage the LED connector (D) when pulling the heat sink off the housing.



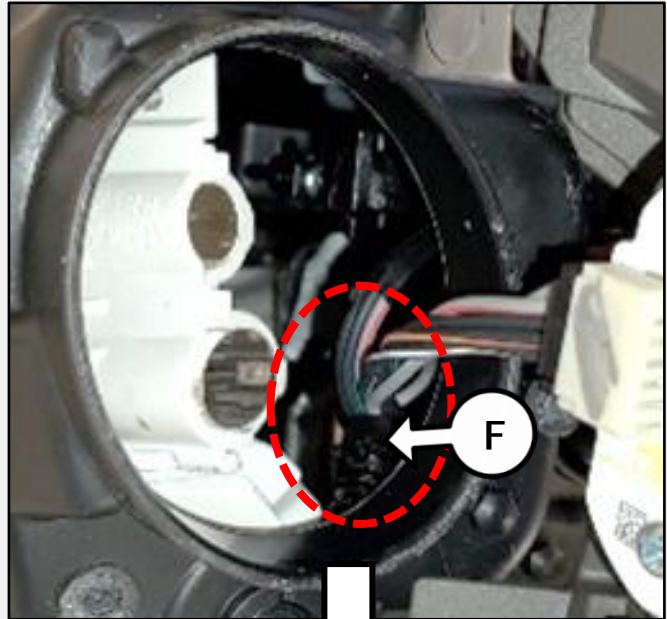
SUBJECT: HEADLAMP SOFT CONNECTION INSPECTION

- 6. Push the connector into the LED module (E) until you hear a click. If the connector is not connected reconnect the connector to the LED module.

Note: Heat sink is removed for demonstration purpose only.



Note: If the wiring is too short to reconnect the connector, the wire clip (F) may be pulled out to allow more space to work.



If the clip was pulled out, it does not need to be put back in the same location, however, make sure the wiring is NOT pinched between the LED source and the light tube when reconnecting.



SUBJECT:

HEADLAMP SOFT CONNECTION INSPECTION

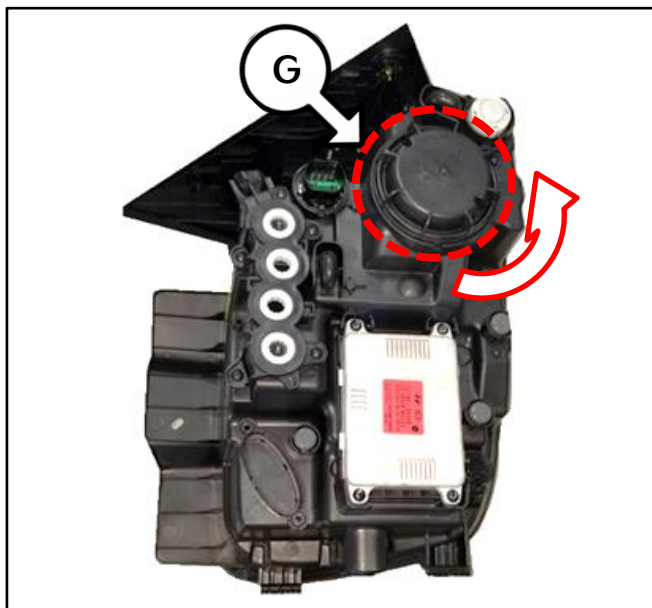
7. Reinstall the heat sink and dust cover.
- 8a. Reinstall the headlamp and verify normal operation.
- 8b. If headlamp does NOT operate normally (low beam or LED strip), replace the headlamp with a new part.

Telluride Wiring Inspection Procedure: LED Strip & Low/High Beam Connection

1. Remove the headlamp from the vehicle by referring to the "Body Electrical System → Lighting System → Headlamps → Repair procedures" chapter in the applicable Shop Manual on KGIS.

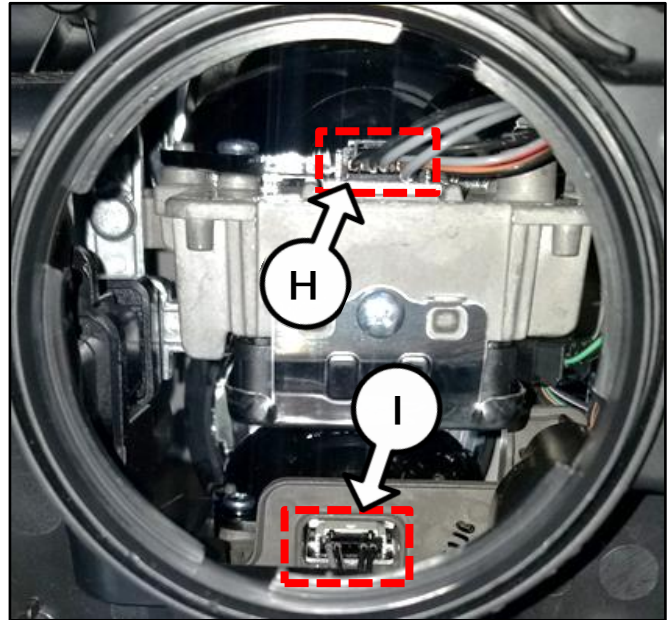


2. Remove the dust cover (G) by turning it counterclockwise.



SUBJECT: HEADLAMP SOFT CONNECTION INSPECTION

- 3. Push in the connectors of the Low Beam connector (H) and the Sub-Low Beam connector (I).



- 4. Reinstall the dust cover.
- 5a. Reinstall the headlamp and verify normal operation.
- 5b. If headlamp does NOT operate normally (low beam or sub-low beam), replace the headlamp with a new part.



SUBJECT:

HEADLAMP SOFT CONNECTION INSPECTION**AFFECTED VEHICLE RANGE:**

Model	Production Date Range
K5 (DL3a)	March 27, 2020 to April 14, 2021
Telluride (ON)	January 9, 2020 to April 12, 2021

REQUIRED PART:

Model	Model Year	Part Name	Type	Part Number*	Qty.
K5 (DL3a)	2021	Headlamp Assy	General (LED)	92101 L3100 (LH)	1
				92102 L3100 (RH)	
			MFR (LED)	92101 L3000 (LH)	
				92102 L3000 (RH)	
Telluride (ON)	2020		LED	92101 S9100 (LH)	
				92101 S9200 (LH)	
				92102 S9100 (RH)	
	2021			92102 S9200 (RH)	
		92101 S9130 (LH)			
		92102 S9130 (RH)			

*Order the correct part number for the applicable vehicle from the EPC.

Note: ONLY order a new headlamp if the inspection/connection procedure in this TSB does not resolve the issues described on page 1.

WARRANTY INFORMATION:

N Code: I14 C Code: ZZ3

Model	Claim Type	Causal P/N	Qty.	Repair Description	Labor Op Code	Op Time	Head-lamp Type	Replacement P/N	Qty.
K5 (20MY)	W	92101 L3100	0	Inspect + Test + Reinstall Headlamp (One side)	92102F01	0.6 M/H	N/A	N/A	N/A
				Inspect + Test + Reinstall Headlamp (Both sides)	92102F02	0.7 M/H			
		92101 L3100 (LH) or 92102 L3100 (RH)	1	Inspect + Test + Install NEW Headlamp + Aiming (One side)	92102F03	0.9 M/H	General (LED)	N/A	N/A
		92101 L3000 (LH) or 92102 L3000 (RH)					MFR (LED)		
		92101 L3100 (LH)	1	Inspect + Test + Install NEW Headlamp + Aiming (Both sides)	92102F04	1.0 M/H	General (LED)	92102 L3100 (RH)	1
		92101 L3000 (LH)	1				MFR (LED)	92102 L3000 (RH)	1



SUBJECT: **HEADLAMP SOFT CONNECTION INSPECTION**

Model	Claim Type	Causal P/N	Qty.	Repair Description	Labor Op Code	Op Time	Head-lamp Type	Replacement P/N	Qty.	
ON (20MY)	W	92101 S9100	0	Inspect + Test + Reinstall Headlamp (One side)	92102F01	0.7 M/H	N/A	N/A	N/A	
				Inspect + Test + Reinstall Headlamp (Both sides)	92102F02	0.8 M/H				
		92101 S9100 (LH) <u>or</u> 92101 S9200 (LH) <u>or</u> 92102 S9100 (RH) <u>or</u> 92102 S9200 (RH)	1	Inspect + Test + Install NEW Headlamp + Aiming (One side)	92102F03	1.0 M/H	LED			
		92101 S9100 (LH) <u>or</u> 92101 S9200 (LH)	1	Inspect + Test + Install NEW Headlamp + Aiming (Both sides)	92102F04	1.1 M/H				92102 S9100 (RH) <u>or</u> 92102 S9200 (RH)
ON (21MY)	W	92101 S9130	0	Inspect + Test + Reinstall Headlamp (One side)	92102F01	0.7 M/H	N/A	N/A	N/A	
				Inspect + Test + Reinstall Headlamp (Both sides)	92102F02	0.8 M/H				
		92101 S9130 (LH) <u>or</u> 92102 S9130 (RH)	1	Inspect + Test + Install NEW Headlamp + Aiming (One side)	92102F03	1.0 M/H	LED			0
		92101 S9130 (LH)	1	Inspect + Test + Install NEW Headlamp + Aiming (Both sides)	92102F04	1.1 M/H				92102 S9130 (RH)

