

May 28, 2021

Version 1

## Driver's Seat Frame Noise

### AFFECTED VEHICLES

Year	Model	Trim Level	VIN Range
2018	Accord	EX	1HGCV1...JA246066 thru 1HGCV1...JA246085
		Touring	1HGCV2...JA053534 thru 1HGCV2...JA053866
2019	Accord	EX	1HGCV1...KA001756 thru 1HGCV1...KA118045
		Sport	1HGCV1...KA009168 thru 1HGCV1...KA105695
		Touring	1HGCV1...KA800147 thru 1HGCV2...KA028133
2019	Accord Hybrid	Touring	1HGCV3...KA000262 thru 1HGCV3...KA016317
2018	CR-V	EX	5J6RW2...JL029831 thru 5J6RW2...JL036808 2HKRW2...JH684996 thru 2HKRW2...JH699398 7FARW1...JE050272 thru 7FARW1...JE055764 5J6RW2...JA000588 thru 5J6RW1...JA013765
		Touring	5J6RW2...JL035928 thru 5J6RW1...JL016537 2HKRW1...JH521056 thru 2HKRW2...JH693794
2019	CR-V	EX	5J6RW2...KL000963 thru 5J6RW1...KL005206 2HKRW2...KH100238 thru 2HKRW1...KH506512 7FARW1...KE003117 thru 7FARW2...KE030748 5J6RW1...KA001120 thru 5J6RW1...KA034889
		Touring	5J6RW2...KL001810 thru 5J6RW2...KL009773 2HKRW2...KH100406 thru 2HKRW2...KH651826 7FARW1...KE001673 thru 7FARW2...KE028276
2019	Odyssey	EX	5FNRL6...KB041414 thru 5FNRL6...KB123493
		Touring	5FNRL6...KB507919 thru 5FNRL6...KB115646
		Elite	5FNRL6...KB048916 thru 5FNRL6...KB119433

**CUSTOMER INFORMATION:** The information in this bulletin is intended for use only by skilled technicians who have the proper tools, equipment, and training to correctly and safely maintain your vehicle. These procedures should not be attempted by "do-it-yourselfers," and you should not assume this bulletin applies to your vehicle, or that your vehicle has the condition described. To determine whether this information applies, contact an authorized Honda automobile dealer.

## SYMPTOM

There is a whining, squeak, or squeal type noise coming from the driver's seat frame when adjusting the seat.

## POSSIBLE CAUSE

There is insufficient grease applied to the Up-Down Motor nylon gear.

## CORRECTIVE ACTION

Apply grease to the Up-Down Motor nylon gear.

## REQUIRED MATERIALS

Part Name	Part Number	Quantity
MULTEMP SH-U Grease (1 container repairs 12 vehicles)	08798-9066	1

## TOOL INFORMATION

Tool Name	Tool Number	Quantity
Prying Tool	Commercially available	1

## WARRANTY CLAIM INFORMATION

The normal warranty applies.

Operation Number	Description	Flat Rate Time	Defect Code	Symptom Code	Template ID	Failed Part Number
8510B0	2018-19 Accord and 2019 Accord Hybrid Apply grease to the Up-Down Motor nylon gear.	0.3 hr	07409	03214	A21048A	81526-TVA-L11
	2018-19 CR-V Apply grease to the Up-Down Motor nylon gear.				A21048B	81526-TLA-A51
	2019 Odyssey Apply grease to the Up-Down Motor nylon gear.				A21048C	81526-THR-A83

Skill Level: Repair Technician

## INSPECTION PROCEDURE

Move the seat to the upmost position. Lower the seat without anyone sitting on it and listen for any whining, squeak or squeal noises. If any noise is heard, move on to repair procedure.

## REPAIR PROCEDURE

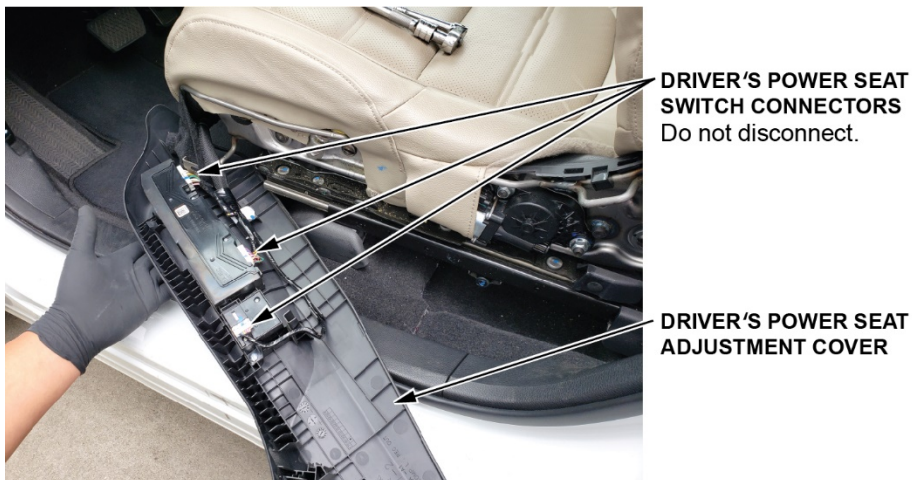
1. Move the driver's seat to its most forward and highest position.



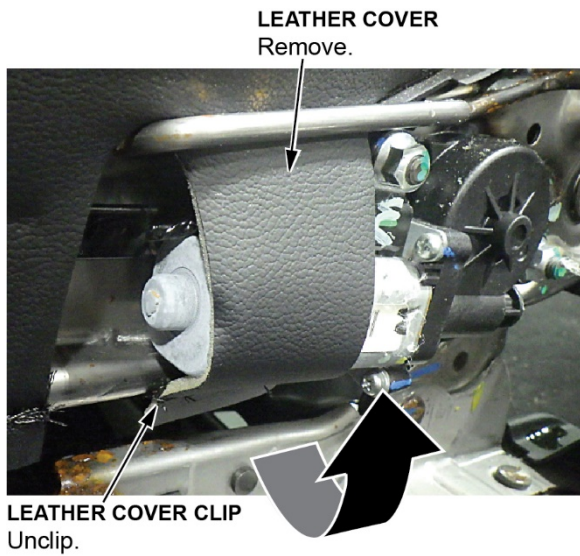
2. Remove the driver's power seat adjustment cover using the prying tool.



NOTE: Do not disconnect the power seat switch connectors.

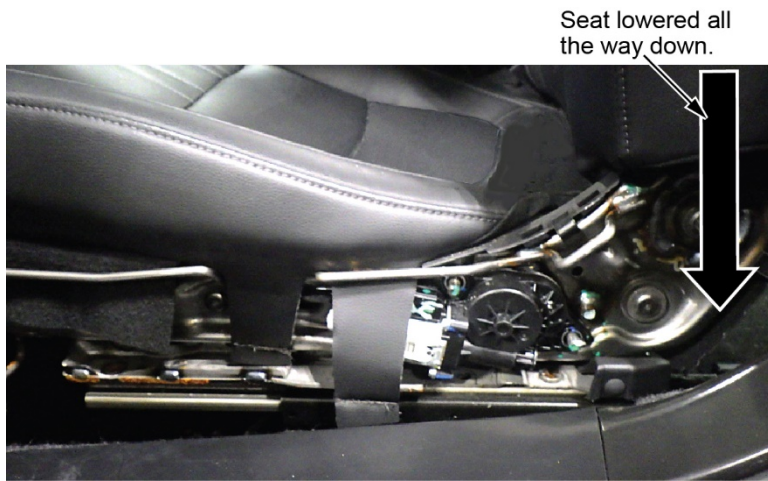


3. Remove the leather cover by detaching it from the bottom.

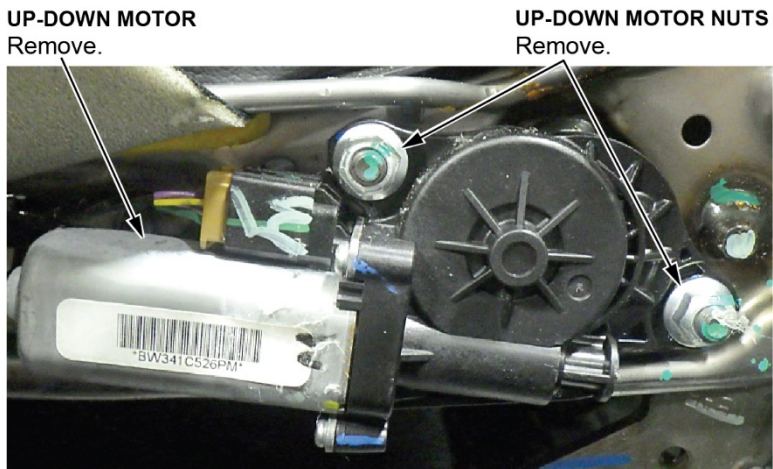


4. Using the power seat adjustment switch, move the seat down to the lowest point.

NOTE: This is important to gain access to the nylon gear.

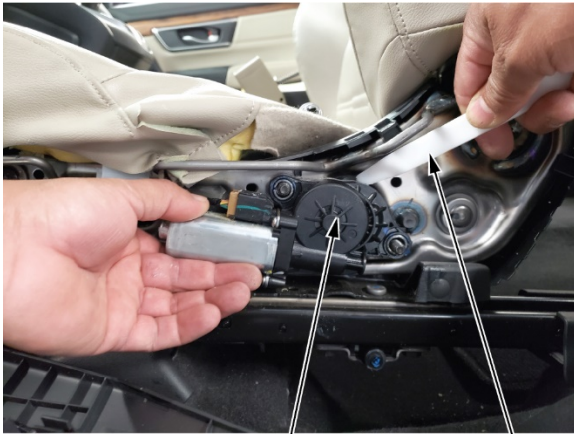


5. Remove the Up-Down Motor nuts.



6. Remove the Up-Down Motor using the prying tool.

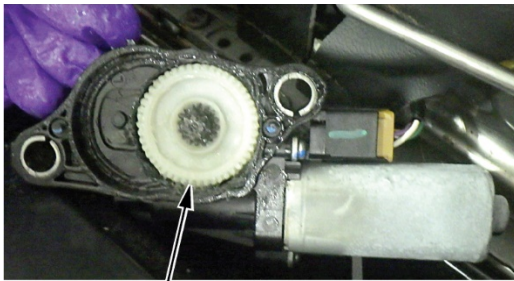
NOTE: Before removing the Up-Down Motor, move the seat down to the lowest point.



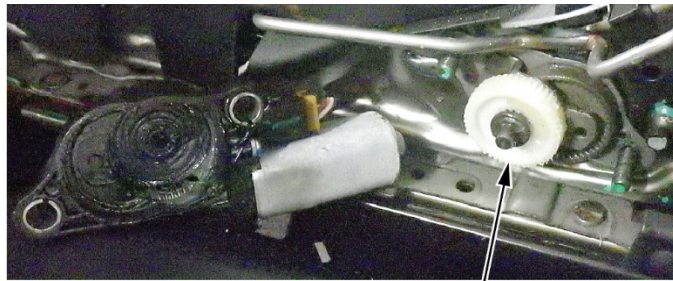
UP-DOWN MOTOR

PRYING TOOL

NOTE: When removing the Up-Down Motor, the nylon gear may come out with the motor or stay on the seat frame.



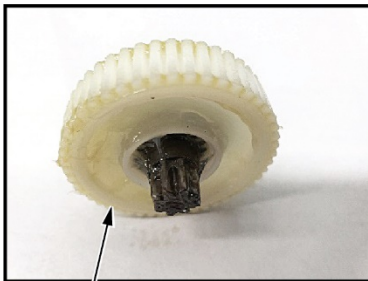
NYLON GEAR ON  
UP-DOWN MOTOR



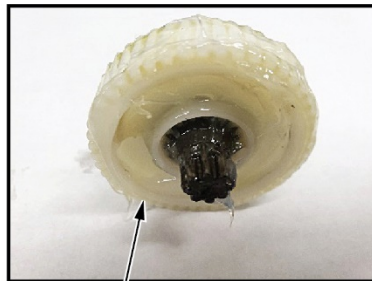
NYLON GEAR ON  
SEAT FRAME

7. Remove the nylon gear and apply a layer of grease.

NOTE: Grease must be applied evenly to both metal and nylon teeth.



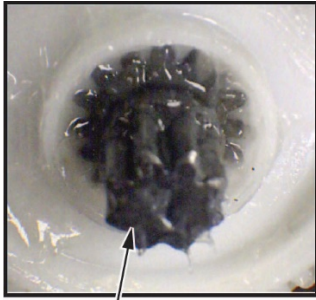
NYLON GEAR BEFORE  
GREASE IS APPLIED



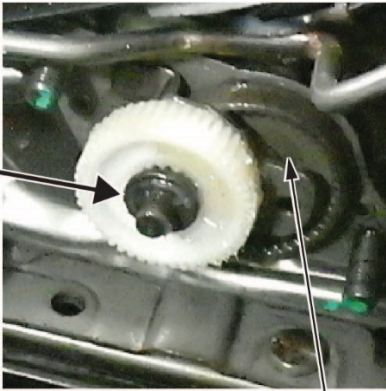
NYLON GEAR AFTER  
GREASE IS APPLIED TO  
METAL AND NYLON TEETH

8. Install the nylon gear to the seat frame.

NOTE: The metal teeth of the nylon gear must be aligned with the seat frame teeth when reinstalling. The nylon gear should be flush with the frame.



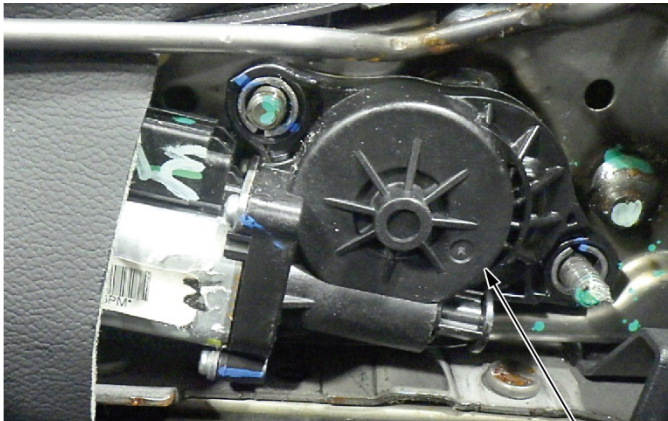
NYLON GEAR METAL TEETH



SEAT FRAME

9. Install the Up-Down Motor to the seat frame.

NOTE: Install slowly to make sure the gears fit together.

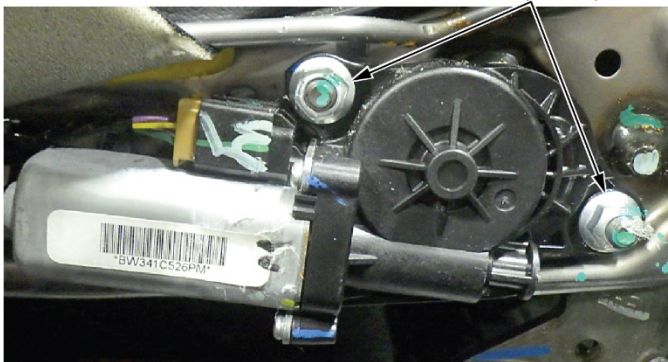


UP-DOWN MOTOR

10. Torque both nuts to **19 N·m (14 lb-ft)**.

NOTE: Do not overtighten nuts.

UP-DOWN MOTOR NUTS  
19 N·m (14 lb-ft)



11. Operate the seat to confirm proper function, and that the noise is not present.

12. Install all removed parts in the reverse order.

END