

**Complaint – Rear Spoiler Does Not Retract Correctly or Is Sticking Up: Replacing Lower Part of Rear Spoiler (58/21)**

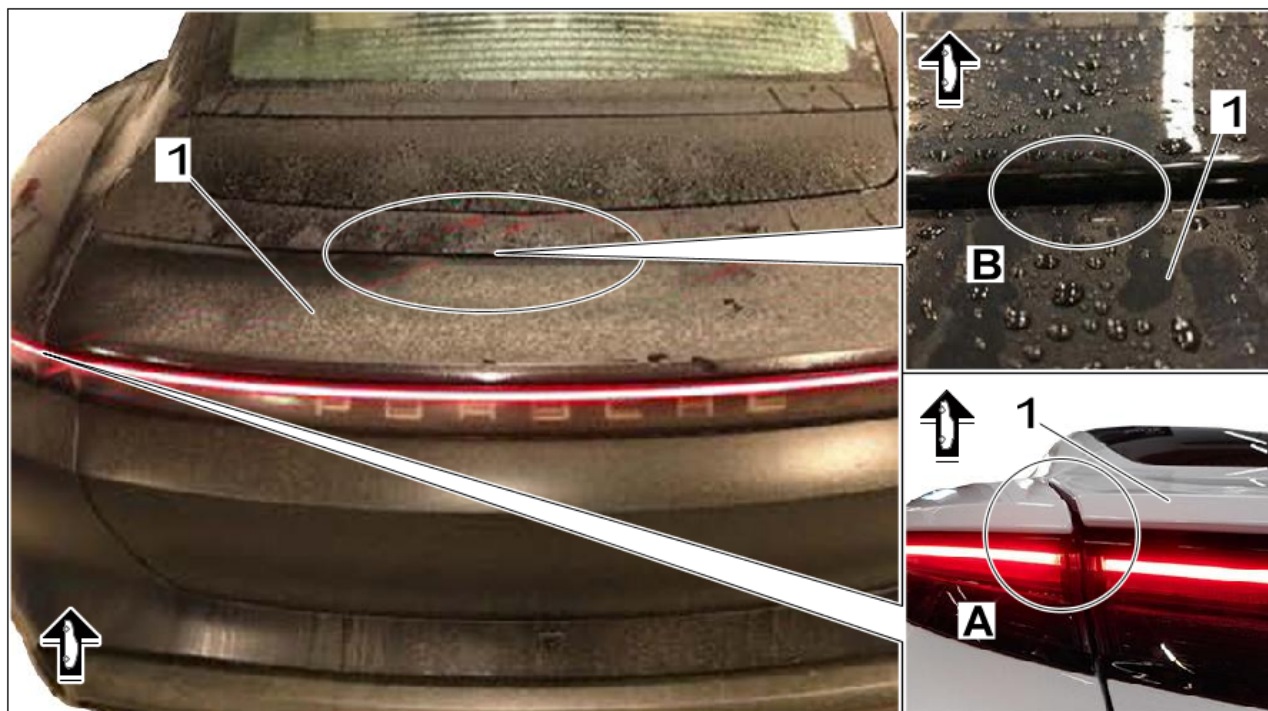
Model Line: **Taycan (Y1A)**

Model Year: **As of 2020 up to 2021**

Concerns: **Lower part of rear spoiler**

Information: The customer complains that the side (⇒ *Rear spoiler -area A-*) of the rear spoiler ⇒ *Rear spoiler -1-* is sticking up or that it does not retract correctly (⇒ *Rear spoiler -Areas A and B-*).

The reason for this is that moisture has seeped in and distorted the **lower part of the rear spoiler**. If moisture continues to seep into the lower part of the rear spoiler, this will cause further distortion.



*Rear spoiler*

Action required: In the event of a complaint, the **lower part of the rear spoiler** must be replaced. ⇒ *Workshop Manual '665819 Removing and installing (lower part of) rear spoiler'*

**Parts required**

Part Info:	Part No.	Designation	Qty.
	9J1827934 OK1	⇒ Lower part of rear spoiler	1 ea.

**Invoicing**

Invoicing: For documentation and warranty invoicing, enter the labor operations, PQIS coding and part numbers specified below in the warranty claim:

APOS	Labor operation	I No.
66581910	Removing and installing lower part of rear spoiler	

PQIS coding:

Location (FES5)	66580	Rear spoiler
Damage type (SA4)	1023	sticking up

Part Info:	Part No.	Designation	Qty.
	9J1827934 OK1	Lower part of rear spoiler	1 ea.

References: ⇒ *Workshop Manual '665819 Removing and installing (lower part of) rear spoiler'*

**Important Notice:** Technical Bulletins issued by Porsche Cars North America, Inc. are intended only for use by professional automotive technicians who have attended Porsche service training courses. They are written to inform those technicians of conditions that may occur on some Porsche vehicles, or to provide information that could assist in the proper servicing of a vehicle. Porsche special tools may be necessary in order to perform certain operations identified in these bulletins. Use of tools and procedures other than those Porsche recommends in these bulletins may be detrimental to the safe operation of your vehicle, and may endanger the people working on it. Properly trained Porsche technicians have the equipment, tools, safety instructions, and know-how to do the job properly and safely. Part numbers listed in these bulletins are for reference only. The work procedures updated electronically in the Porsche PIWIS diagnostic and testing device take precedence and, in the event of a discrepancy, the work procedures in the PIWIS Tester are the ones that must be followed.

© 2021 Porsche Cars North America, Inc.