



KIA MOTORS

GROUP
Chassis

MODEL
Forte w/MDPS

NUMBER
020

DATE
October 2009

TECHNICAL SERVICE BULLETIN

SUBJECT: SERVICE ACTION: ECU UPGRADE FOR MOTOR DRIVEN
POWER STEERING SYSTEM (SA019)

This Bulletin provides information related to an MDPS ECU software upgrade on some 2010 Forte (TD) vehicles produced between 3/3/09 and 08/19/09 that are equipped with the optional MDPS (Motor Driven Power Steering). Just after starting the engine on some occasions the "EPS Light" may illuminate on affected vehicles due to a software issue. To address this concern the vehicle's MDPS control unit should be reprogrammed following the procedures as outlined below. It is not necessary to replace the Motor Driven Power Steering Column Assembly for this concern.

It is recommended that any vehicle within this production range be repaired prior to retail sale to a customer.



Global Diagnostic System (GDS)

CHAO201 SA019
CLOSED

*NOTICE

A Service Action is a repair program without customer notification that is performed during the warranty period. Any dealer request to perform this repair outside the warranty period will require DPSM approval.

Repair status for a VIN is provided on WebDCS (Service>Warranty Coverage>Warranty Coverage Inquiry>Campaign Information). Not Completed Recall/Service Action reports are available on WebDCS (Consumer Affairs>Not Completed Recall Recall VIN>Select Report), which includes a list of affected vehicles.

The issue number is SA019.

UPGRADE EVENT NAME

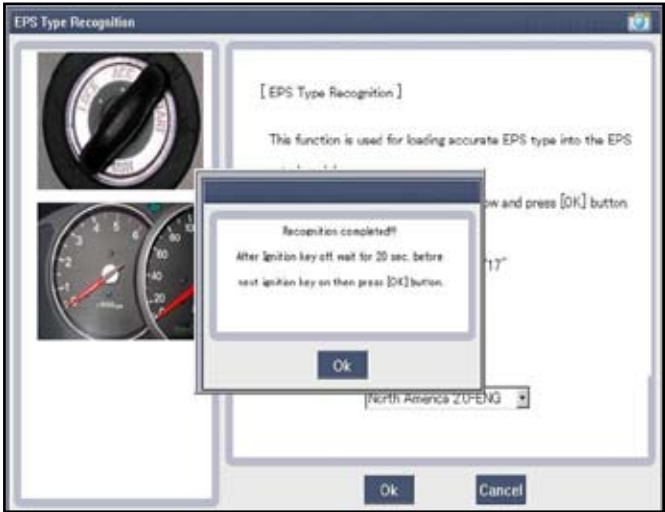
95. TD Forte 10MY EPS LOGIC IMPROVEMENT

File Under: Chassis

- Circulate To: General Manager Service Manager Parts Manager
 Service Advisor(s) Technician(s) Body Shop Manager Fleet Repair

SUBJECT: SERVICE ACTION: ECU UPGRADE FOR MOTOR DRIVEN POWER STEERING SYSTEM TO PREVENT C2412 (SA019)

3. When the EPS Type recognition is completed, the following message will be displayed:



AFFECTED PRODUCTION RANGE:

2010 Forte/Koup vehicles equipped MDPS produced prior to 8/19/2009.

WARRANTY CLAIM INFORMATION:

| Claim Type | Causal P/N | Labor OP Code | Repair Description | Time | Related Parts | Qty. | N Code | C Code |
|------------|-------------|---------------|------------------------|---------|---------------|------|--------|--------|
| V | 56310 1M500 | 090048R1 | SA 019-EPS ECU Upgrade | 0.3 M/H | N/A | 0 | N94 | C40 |

***NOTICE**

VIN Inquiry data for this repair is provided for tracking purposes only. Kia retailers should reference SA019 when accessing their Dealer Communications System (DCS).