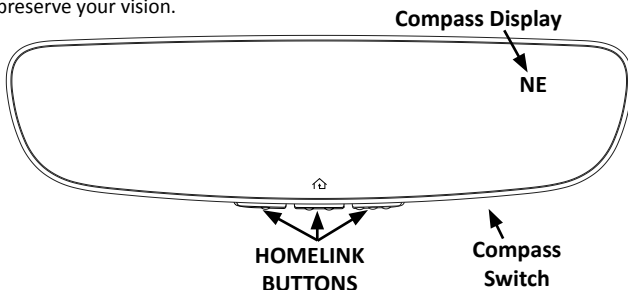


Accessories



Volkswagen

Congratulations! Your new automobile is equipped with an automatic dimming mirror from Volkswagen Accessories. During nighttime driving, the auto-dimming feature senses distracting glare from vehicle headlights behind you and automatically dims to eliminate the glare and preserve your vision.

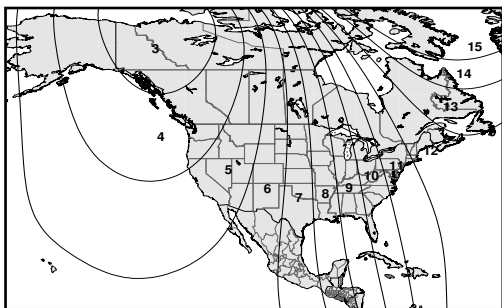


To Operate the Auto-Dimming Feature

The Auto-Dimming feature is enabled by default when the vehicle key is turned to ignition.

To Operate the Compass Feature

1. Using a paper clip, push and release the compass switch. The display will toggle between on and off.
2. If the display reads "C", calibrate the compass by driving the vehicle in a complete circle at less than five mph.
3. To adjust for Compass Variance:
 - a. Using a paper clip, press and hold the switch for 6 seconds, or until the current zone number appears in the display.
 - b. Find your current location and variance zone number on the map. (See below)
 - c. Press the switch again until the new zone number appears in the display. After you stop pressing the switch, the display will show a direction within 10 seconds.



550-0684-000 Rev. 003 05/10/16

Copyright 2016



HomeLink Quick Reference Guide

Your new mirror also comes integrated with HomeLink®. The HomeLink wireless control system provides a convenient way to replace up to three hand-held radio-frequency remotes used to activate devices such as gate operators, garage door openers, entry door locks, security systems, and even home lighting.

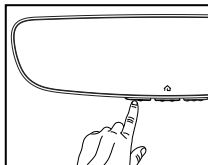
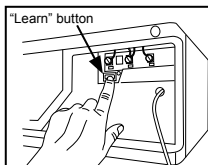
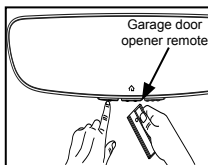
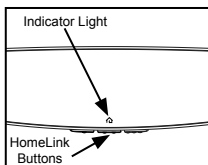
Programming a HomeLink Button

The below steps are generic programming instructions; for Genie and Sommer garage door openers please go directly to the HomeLink website.

Additional information and programming videos can be found at www.HomeLink.com, www.youtube.com/HomeLinkGentex, scanning the QR code to the right, or by calling the toll-free HomeLink-hotline at 1-800-355-3515.



1. Before programming, press the HomeLink button you would like to program and observe the indicator light. The indicator light will flash orange slowly if ready to program. If not, refer to the "Erasing HomeLink Buttons" in the HomeLink Programming and Information Guide.
2. Position the hand-held remote (garage door opener remote) 1–3 inches (2–8 cm) away from the HomeLink button you would like to program.
3. While the HomeLink indicator light is flashing orange, press and hold the hand-held remote (garage door opener remote) button until the HomeLink indicator light changes from orange to green.
4. Press the HomeLink button that you would like to program and observe the indicator light.
 - a. If the indicator light remains constant green, your device should operate when the HomeLink button is pressed. At this point, if your device operates, programming is complete.
 - b. If the indicator light rapidly flashes green, press, hold for two seconds and release the HomeLink button up to three times to complete the training process. At this point if your device operates, programming is complete. If the device does not operate, continue to the next step of the programming instructions.
5. At the garage door opener motor, (security gate motor, etc...) locate the "learn", "smart", or "program" button. Press and release the button. Once the button is pressed, there are 30 seconds in which to complete the next step.
6. Press, hold for two seconds and release the HomeLink button up to three times to complete the training process. Programming should now be complete and your device should operate when the HomeLink button is pressed.



"Volkswagen" and the Volkswagen logo are registered trademarks of Volkswagen AG.

*HomeLink® and the HomeLink House® logo are registered trademarks of Gentex Corporation.