

DTNA Solutions > Service Solutions > Western Star
> SS 705-WST 2021 49X XMC3 & XMC4 Output Reliability

SS 705-WST 2021 49X XMC3 & XMC4 Output Reliability

Applicable Vehicles

49X vehicles built with XMC3 & XMC4

Symptoms

Outputs from XMC's are arbitrary and sometimes intermittent, systems may be inoperable.

Issue

Reliability issue with the six 20 Amp outputs (D01-D06) on the XMC's

Solution

For Western Star 49X trucks that implement XMC3 and XMC4, there is more than one way to take advantage of the flexible programming capabilities, using the CHEC tool to program existing XMC's 3 & 4 in the field. For reference, to output names and wiring on Western Star 49X wiring, refer to PartsPro subgroup 35M per serial number.

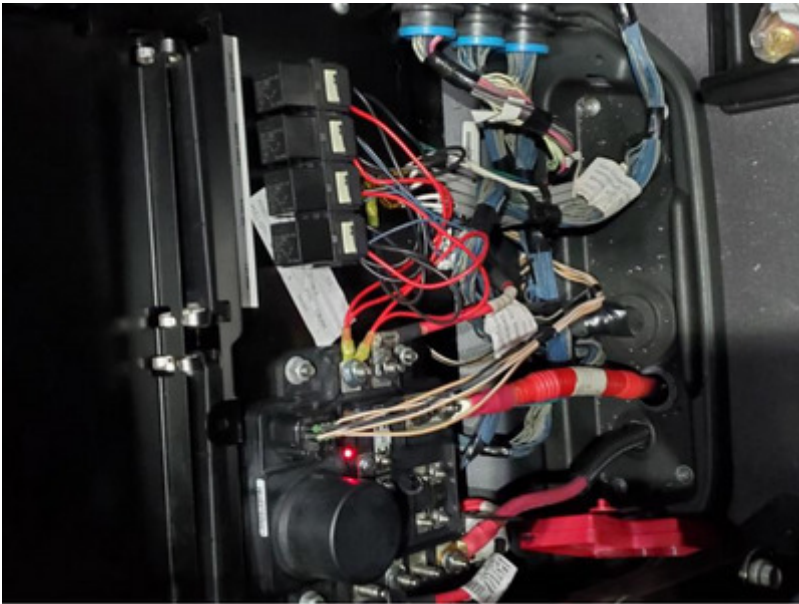
On the XMC3 and XMC4, there are four 5 Amp outputs (D07-D10), and eight 2 Amp outputs (D11-D17). All of the 5 and 2 Amp outputs are working reliably on XMC's. If your current requirements do not exceed these ratings, you can freely program the XMC3 and XMC4 for your purposes and connect to the output pins.

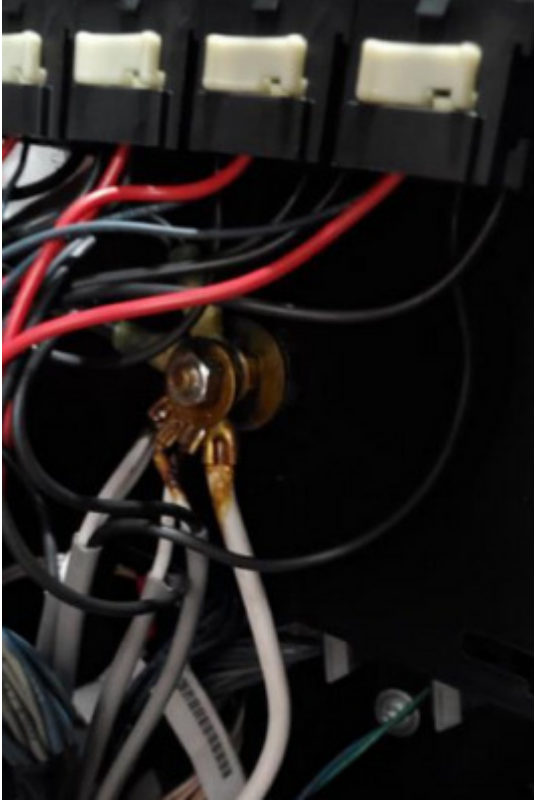
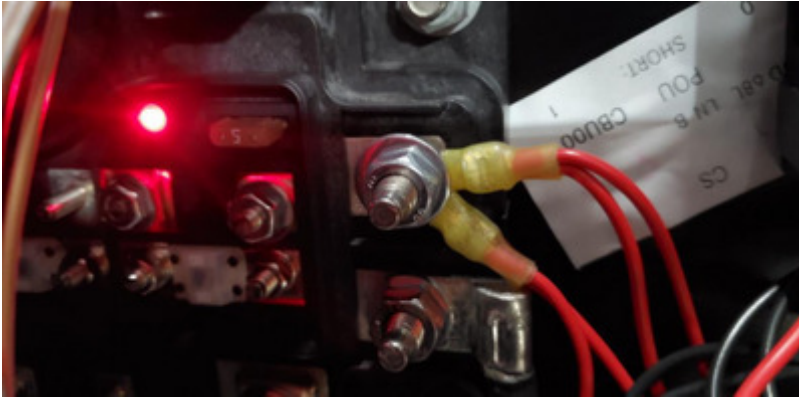
Applications that require higher current capacity may use any of the 2 or 5 Amp outputs to trigger relays to source higher current. There is the option of adding relays individually on a 49X or you can choose the process noted in the paragraph below. Referring to schematic G66-17097-002 (see attached document) in PartsPro module 35M for sample truck S/N MS2152 will provide useful diagrams to implement relays.

There is a released sales code as a viable factory option for higher current applications. It uses 2 Amp outputs to control relays. Sales code 35M-012 (refer to truck S/N MS2152 for wiring information) provides eight 20 Amp, relay driven circuits. Modifying trucks to this sales code provides a feature documented and supported by DTNA. To implement a new sales code on an existing Western Star, follow Service Bulletin 00-004 to submit the truck and desired features to the Modifications department.

Do not use sales code 35M-011 as a solution, the 20A relay circuits in that configuration use the same 20A outputs that are currently failing as the trigger for the relays.

example of field modification (dealer supplied materials, see per serial module 35M for correct part numbers):





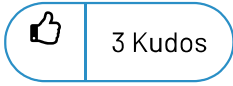
Labels :

49X

Add tags

Attachments





Comment



