



SIB 11 06 21

ROCKER ARM REPLACEMENT GUIDELINES

2021-04-14

This Service Information Bulletin replaces measure 64011504-05 **dated August 2019**.

MODEL

E-Series	Model Description
K02, K03	G 310 GS, G 310 R
K42	HP4
K46, K47, K49	S 1000 RR, S 1000 R, S 1000 XR
K50	R 1200 GS / R 1250 GS
K51	R 1200 GSA / R 1250 GSA
K52	R 1200 RT / R 1250 RT
K53	R 1200 R / R 1250 R
K54	R 1200 RS / R 1250 RS
K60	HP4 RACE
K80, K81, K82	F 750 GS, F 850 GS, F 850 GSA

SITUATION

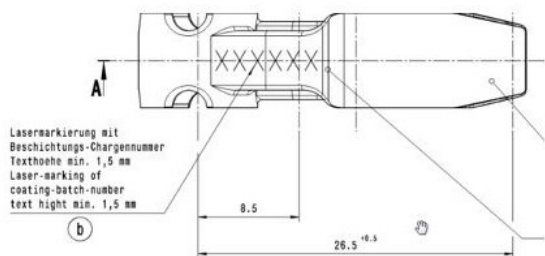
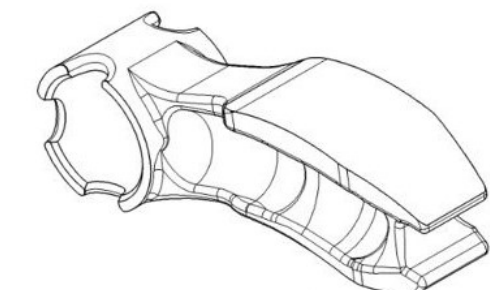
Ticking noises emanating from the cylinder head.

Due to quality differences in the adhesion of the DLC (Diamond like coating) of the rocker arm, the rocker arms and camshafts can wear prematurely. This presents itself initially as ticking noises from the cylinder head.

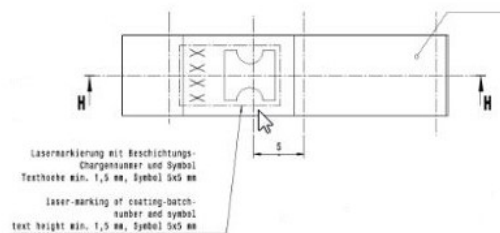
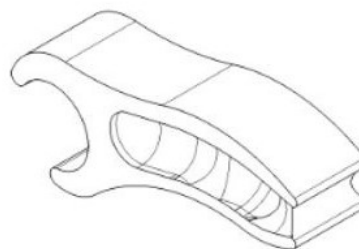
CORRECTION

A redesigned rocker arm has replaced the older version in production motorcycles, as pictured below.

– New rocker arms



– Current rocker arms



PROCEDURE

If ticking noises are caused by rocker arm wear, ALL rocker arms and damaged camshafts must be replaced, including in the opposite cylinder head on boxer engines. An oil change must also be completed after the repair.

If the updated rocker arms are specified in ETK and installed during a repair but the rocker arm wear re-occurs, please submit a TSARA case with photos of the rocker arms in which the batch numbers and the wear marks are visible.

PARTS INFORMATION

Obtain and confirm the part numbers for your specific vehicle by entering the chassis number in ETK which takes into account specific equipment and/or options.

WARRANTY INFORMATION

Covered under the terms of the BMW New Vehicle Limited Warranty for Motorcycles, if applicable.

Defect code

11 33 00 28 00	Rocker Arm / Rocker Arm Worn
----------------	------------------------------

QUESTIONS REGARDING THIS BULLETIN

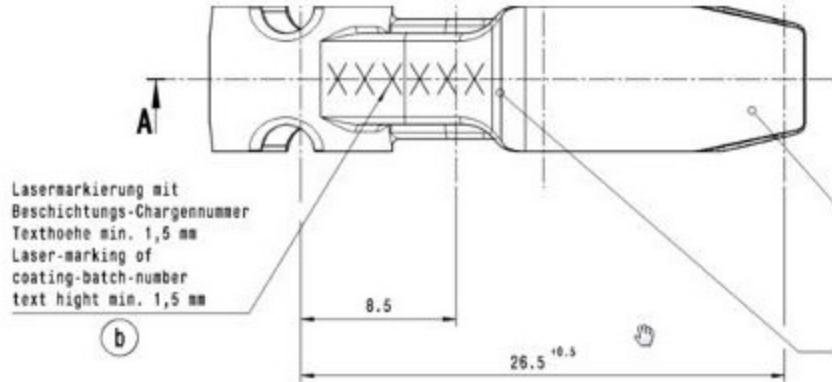
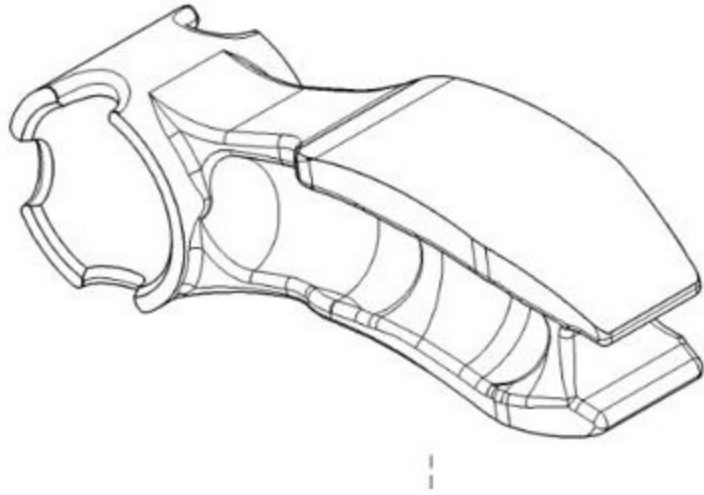
Technical inquiries	Contact the BMW Technical Support Group via TSARA
Warranty inquiries	Submit an IDS ticket to the Warranty Department
Parts inquiries	Submit an IDS ticket to the Motorrad Parts Department

Supporting Materials

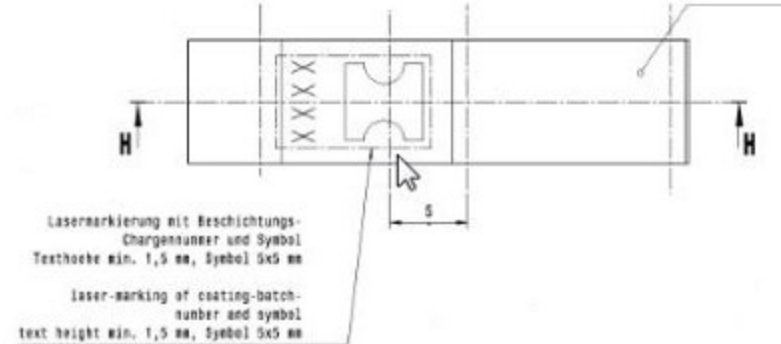
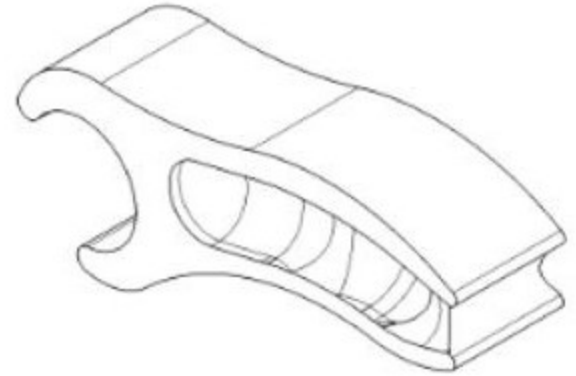
[picture_as_pdf 11 06 21 ROCKER ARM REPLACEMENT GUIDELINES.pdf](#)

[insert_drive_file rocker arms S models.jpg](#)

– New rocker arms



– Current rocker arms



Service Information Bulletin

Engine

April 14, 2021

11 06 21

ROCKER ARM REPLACEMENT GUIDELINES



**BMW
MOTORRAD**

This Service Information Bulletin replaces measure 64011504-05 dated **August 2019**.

MODEL

E-Series	Model Description
K02, K03	G 310 GS, G 310 R
K42	HP4
K46, K47, K49	S 1000 RR, S 1000 R, S 1000 XR
K50	R 1200 GS / R 1250 GS
K51	R 1200 GSA / R 1250 GSA
K52	R 1200 RT / R 1250 RT
K53	R 1200 R / R 1250 R
K54	R 1200 RS / R 1250 RS
K60	HP4 RACE
K80, K81, K82	F 750 GS, F 850 GS, F 850 GSA

SITUATION

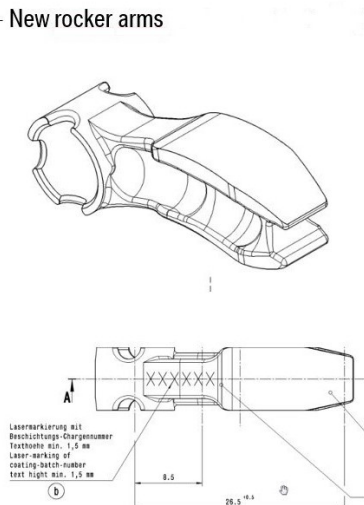
Ticking noises emanating from the cylinder head.

Due to quality differences in the adhesion of the DLC (Diamond like coating) of the rocker arm, the rocker arms and camshafts can wear prematurely. This presents itself initially as ticking noises from the cylinder head.

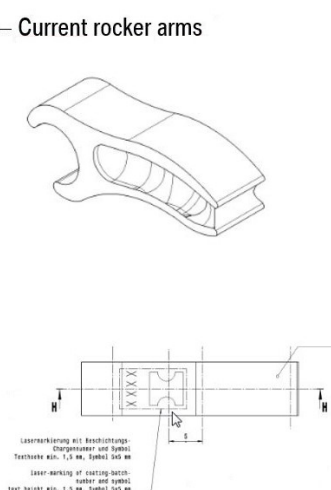
CORRECTION

A redesigned rocker arm has replaced the older version in production motorcycles, as pictured below.

– New rocker arms



– Current rocker arms



PROCEDURE

If ticking noises are caused by rocker arm wear, ALL rocker arms and damaged camshafts must be replaced, including in the opposite cylinder head on boxer engines. An oil change must also be completed after the repair.

If the updated rocker arms are specified in ETK and installed during a repair but the rocker arm wear re-occurs, please submit a TSARA case with photos of the rocker arms in which the batch numbers and the wear marks are visible.

PARTS INFORMATION

Obtain and confirm the part numbers for your specific vehicle by entering the chassis number in ETK which takes into account specific equipment and/or options.

WARRANTY INFORMATION

Covered under the terms of the BMW New Vehicle Limited Warranty for Motorcycles, if applicable.

Defect code

11 33 00 28 00	Rocker Arm / Rocker Arm Worn
----------------	------------------------------

QUESTIONS REGARDING THIS BULLETIN

Technical inquiries	Contact the BMW Technical Support Group via TSARA
Warranty inquiries	Submit an IDS ticket to the Warranty Department
Parts inquiries	Submit an IDS ticket to the Motorrad Parts Department