



SIB 64 01 21

2021-04-05

WHISTLING NOISE COMING FROM FRESH AIR INLET (ENGINE COMPARTMENT)

This Service Information Bulletin (Revision 1) replaces SI B64 01 21 **dated March 2021**.

What's New (Specific text highlighted):

- Parts – New part number butyl tape

MODEL

E-Series	Model Description
F97	X3 M SAV
F98	X4 M SAC
G01	X3 Sports Activity Vehicle (SAV)
G02	X4 Sports Activity Coupe (SAC)

SITUATION

A whistling noise is present from the fresh air inlet area (engine compartment bulkhead area), in the right front area of the vehicle, at speeds above 40 mph. The noise is loudest when the sunroof is in the vent position.

CAUSE

An unfavorably attached foam seal on the sealing frame of the fresh air inlet results in a gap between the foam and the sealing frame (circled). Unintentional air ingress can pass between the seal and the sealing frame.



CORRECTION

Inspect the seal between the fresh air inlet and firewall for proper installation. If the seal is mispositioned, seal the gap with Butyl tape.

PROCEDURE

Important warning for working on the high-voltage (HV) systems on the G01 PHEV:

Only properly trained personnel, who have passed all applicable technical training courses, should perform any maintenance or repairs on any Hybrid or Electric Vehicle. Work performed by unqualified persons may result in severe injury or damage to the vehicle. Additional information is found in Repair Instruction 61 00... Observe safety instructions when handling electric vehicles.

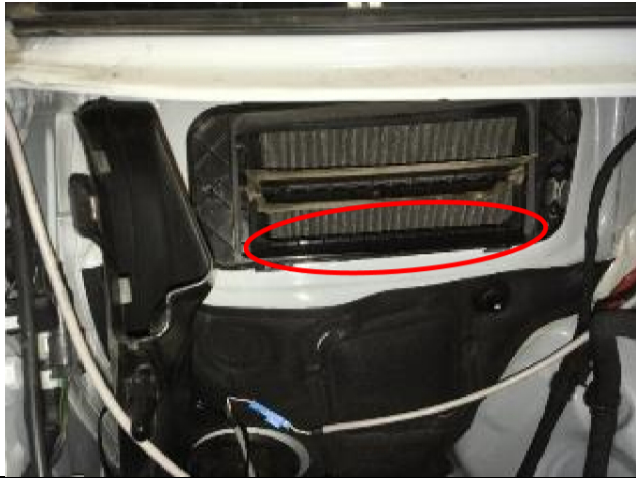
When working near high-voltage components (labelled accordingly by signs and/or orange coating), disconnect the high-voltage system and protect it from damage.

1. Uncover the fresh air inlet (front right in engine compartment, bulkhead area).

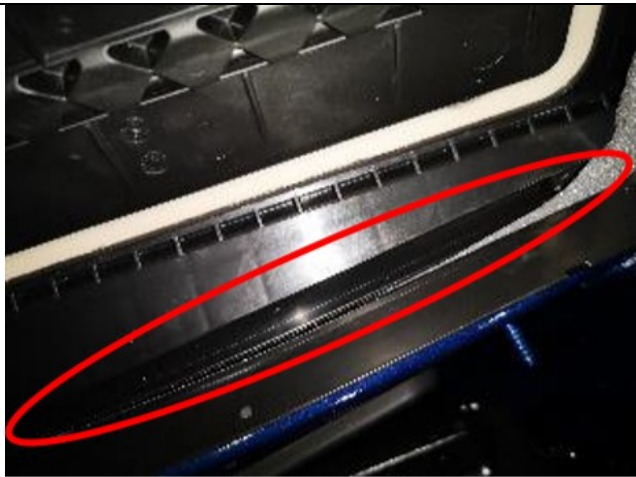
Note: The battery for the vehicle voltage must be removed in vehicles with 48V vehicle voltage.

Observe repair instructions "6121065 - Remove and install vehicle electrical system support battery".

	<p>2. Remove the diffuser of the fresh air intake. Once the inlet has been removed, check if the foam material is correctly installed.</p>
--	--



A mirror is helpful for checking the lower area of the sealing frame.



3. Seal the gap with butyl tape as follows:

- Cut the butyl tape exactly and stick it in-between the sealing ring and the



- bulkhead
- Important: You must use enough butyl tape to fully close the gap between the foam material and sealing frame
- **The butyl tape must not affect the function of the fresh air flap in the sealing frame**

The flap position is always open when the vehicle is parked.



4. Carry out a functional check of the fresh air flap as follows:

- Connect an external voltage supply (battery charger)
- Switch on the ignition
- Activate the flap using the fresh air/air recirculation button in the air conditioning control panel

5. If the functional check of the fresh air flap is successful, reassemble the vehicle.

PARTS INFORMATION

Part Number	Description	Quantity
83 19 5 A1B 479	butyl tape (One 10-meter roll will repair 10 vehicles)	1

Parts replacement is not required.

WARRANTY INFORMATION

Covered under the terms of the BMW New Vehicle Limited Warranty for Passenger Cars and Light Trucks.

Defect Code:	6430003900	External air guide (clean air channel) Unpleasant noises

Labor Operation	Description	Labor Allowance
64 99 000	Work time to inspect the seal between the fresh air inlet and the firewall for proper installation, rework the recirculation flap seal if it is found out of place (Main work)	8 FRU; 14 FRU (with additional battery)
Or:		
64 99 000	Work time to inspect the seal between the fresh air inlet and the firewall for proper installation, rework the recirculation flap seal if it is found out of place (Plus work – Vehicle is already in the workshop)	6 FRU; 13 FRU (with additional battery)

If you are using a Main labor code for another repair, use the Plus code work time FRU allowance that applies instead of the Main work FRU allowance.

And, as needed:

Sublet – Bulk Materials (RO and Claim Comments Required)

Sublet Code 4	See the sublet reimbursement calculations below	Reimbursement for the repair-related bulk material (Do not use the BMW part numbers for claim submission)
--------------------------	---	---

Sublet reimbursement calculation for claiming the applicable repair-related bulk material (BMW part numbers) is at the dealer net price amount for the quantity used plus your center's handling.

Enter this material cost in sublet and itemize the amount on the repair order and in claim comment section.

As applicable to your center, please refer to **SI B01 01 20** or **B01 07 20** for claiming your diagnosis work time, job/repair work time (WT), RO/Claim WT and/or repair explanation procedures, unless otherwise required by State law.

Other Repairs

If other eligible and covered work is performed as a result of diagnosing the issue described in this bulletin, claim this work with the applicable defect code and the labor operations listed in AIR (including diagnosis).

QUESTIONS REGARDING THIS BULLETIN

Technical inquiries	Submit feedback at the top of this bulletin
Warranty inquiries	Please contact the Warranty department by either using the Live Chat that's available in the Warranty Documentation Portal or through IDS by selecting Coverage, Policy, Coding Questions and Mileage Corrections
Parts inquiries	Submit an IDS ticket to the Parts Department