

GLOBAL SAFETY FIELD INVESTIGATIONS  
DCS5755  
URGENT - DISTRIBUTE IMMEDIATELY

Date: April 14, 2021

Subject: REVISION: 18226-01 - Special Coverage  
Overheating of Fuel Relay or Motor Terminal  
Revised Service Procedure

Models: 2008-2011 Buick Lucerne  
2009-2011 Cadillac DTS

To: All General Motors Dealers

This bulletin is being revised to update the service procedure. Please discard all previous copies of 18226.

END OF MESSAGE  
GLOBAL SAFETY FIELD INVESTIGATIONS

# Special Coverage Adjustment

## 18226 Overheating of Fuel Relay or Motor Terminal



Reference Number: N182155410

Release Date: April 2021  
Revision: 01

**Revision Description:** This bulletin is being revised to update the service procedure. Please discard all previous copies of 18226.

Make	Model	Model Year		RPO	Description
		From	To		
Buick	Lucerne	2008	2011		
Cadillac	DTS	2009	2011		

Involved vehicles are identified on the Applicable Warranties section in GM Global Warranty Management system. This site should always be checked to confirm vehicle involvement prior to beginning any required inspections and/or repairs.

<b>Condition</b>	On some 2008 – 2011 model year Buick Lucerne and 2009 – 2011 model year Cadillac DTS vehicles, the vehicle's rear-seat bracket could contact the vehicle's Rear Electrical Center (REC), which can, over time, damage electrical components within the REC enclosure. If damage occurs, the components can melt or overheat, which the customer may detect by a melting odor in the vehicle. Damage could also cause the vehicle's battery to drain, a no-start condition, or a stall.
<b>Special Coverage Adjustment</b>	<p>This special coverage covers the condition described above for a period of 10 years or 120,000 miles (193,000 km), whichever occurs first, from the date the vehicle was originally placed in service, regardless of ownership.</p> <p>For vehicles covered by Vehicle Service Contracts, all eligible claims with repair orders on or after December 14, 2018, are covered by this special coverage and must be submitted using the labor operation codes provided with this bulletin. Claims with repair orders prior to December 14, 2018, must be submitted to the Service Contract provider.</p> <p>Vehicle owners or lessees who paid for repairs referenced in this Special Coverage ("Customers") are eligible for reimbursement of their reasonable and customary expenses in accordance with the procedures specified below. The conditional right to reimbursement is provided by GM solely in the interest of customer satisfaction and is personal to Customers. <i>Customers may not assign and GM does not consent to any assignment of any Customer's right to submit reimbursement claims, or to receive reimbursement, or any other rights granted by this Special Coverage to any third party, including but not limited to service contract providers, and this Special Coverage is not intended to and does not confer any third party beneficiary, subrogation or contribution rights, or any other rights to reimbursement, against GM, whether in law, equity or otherwise, on any third parties.</i></p>
<b>Correction</b>	Dealers are to inspect and if repair is necessary, replace the rear electrical center (REC). Additional repairs to the fuel pump relay wiring may be required. In each case the rear seat bracket will need to be trimmed (Lucerne only). The repairs will be made at no charge to the customer.

### Parts

Quantity	Part Name	Part No.
1	Rear Electrical Center	84446208

It is estimated that less than 14% of the involved vehicles will require parts replaced. **Due to the small number of vehicles anticipated that will need this fix and the limited initial parts availability, dealers are encouraged not to order these parts for use as shelf stock.** Parts may have quantity limiters in effect.

### Warranty Information

Labor Operation	Description	Labor Time	Trans. Type	Net Item
9900545	Diagnostic Time Only – No Repair Required	0.1-0.3	ZREG	N/A
9900546	Replace Rear Electrical Center (REC)	0.5	ZREG	N/A
	Replace REC and Cut Rear Seat Bracket (Lucerne Only)	0.9		
	Adjust Rear Electrical Center (DTS Only)	0.2		
	Add: Wiring Repair	0.1-0.5		
	Add: Replace Tall Fuel Pump Relay with Short Relay	0.1		
	Add: Diagnostic Time	0.1-0.3		
9900547	Customer Reimbursement Approved - For USA and Canada dealers only - For Export dealers only	N/A 0.2	ZREG	*
9900548	Customer Reimbursement Denied – For USA dealers only	N/A	ZREG	**

# Special Coverage Adjustment

## 18226 Overheating of Fuel Relay or Motor Terminal

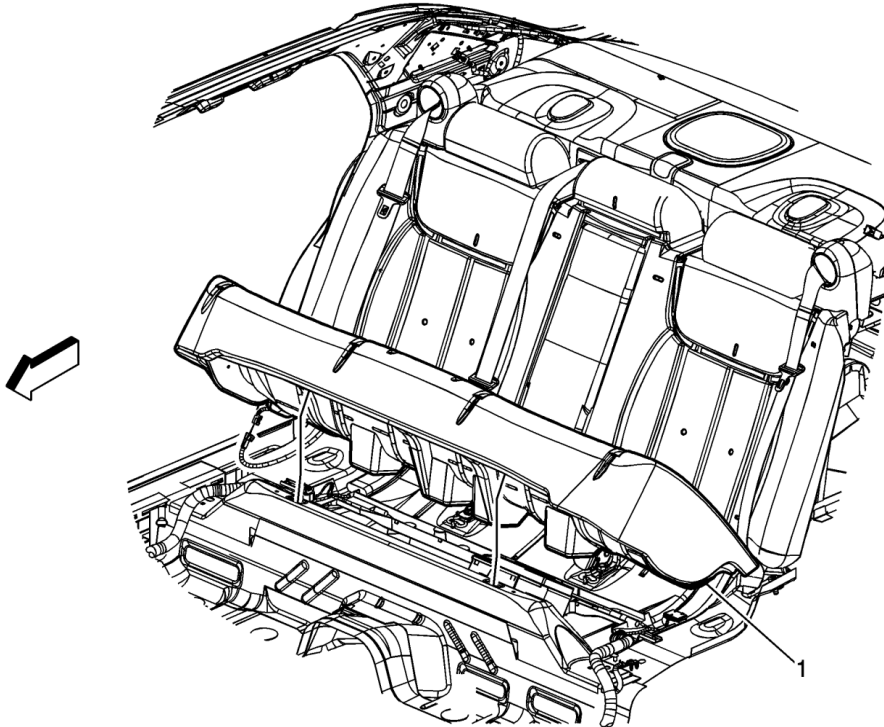


\* For USA and Canada: Submit the dollar amount reimbursed to the Customer in Net/Reimbursement. Submit \$20.00 administrative allowance in Net/Admin Allowance.

For Export: Submit the dollar amount reimbursed to the Customer in Net/Reimbursement.

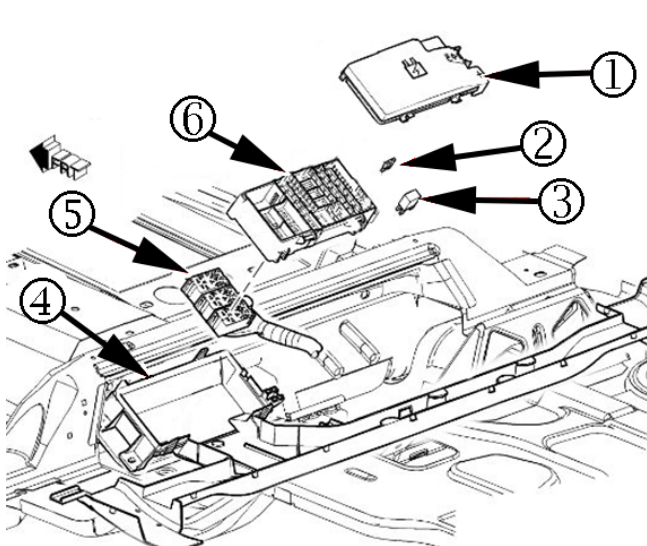
\*\* Submit \$10.00 administrative allowance in Net/Admin Allowance.

### Service Procedure



1572099

1. Remove the rear seat bottom cushion (1).
2. Disconnect the negative battery cable.



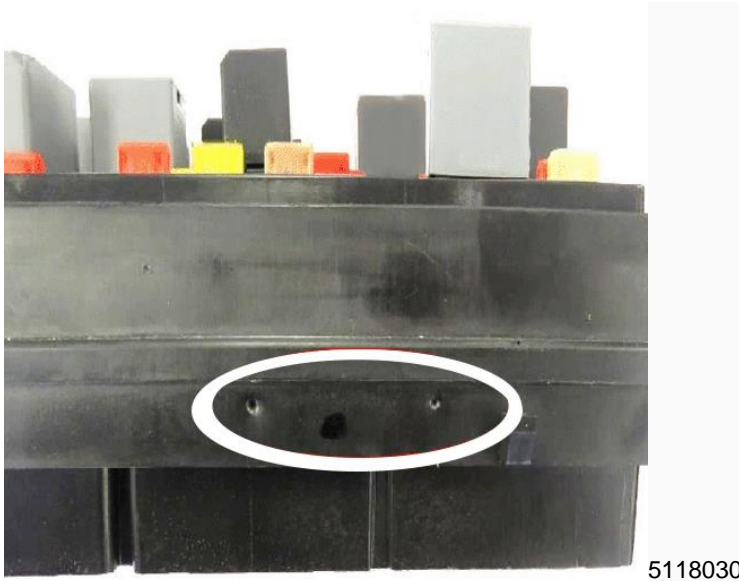
5118028

## Special Coverage Adjustment

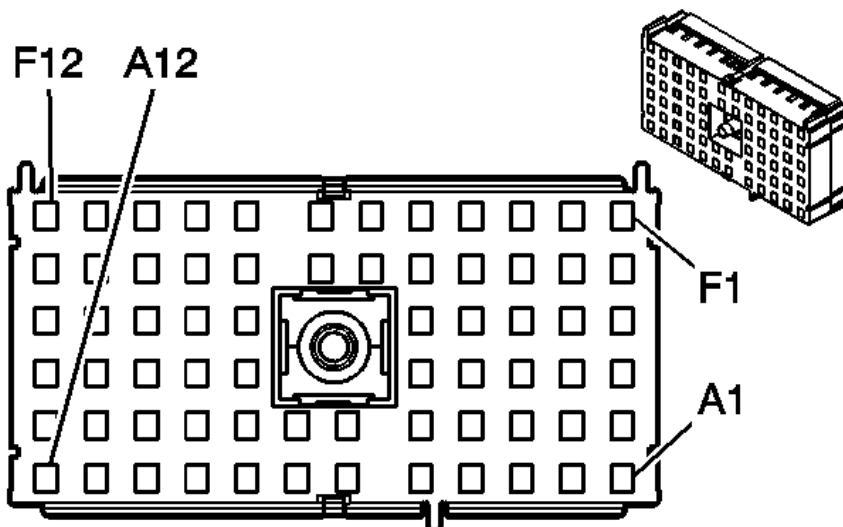
### 18226 Overheating of Fuel Relay or Motor Terminal



3. Remove the Rear Electrical Center (REC) cover (1).
4. Inspect the cover for signs of contact with the fuel pump relay.
5. Remove and inspect the fuel pump relay (3) for any signs of contact, damage and/or burn marks.
6. Remove and inspect the fuel pump fuse (2) for any signs of damage and/or burn marks.
7. Separate the upper REC (6) from the lower housing (4) by pressing the 4 locking tabs.
8. Inspect the REC for the following concerns:



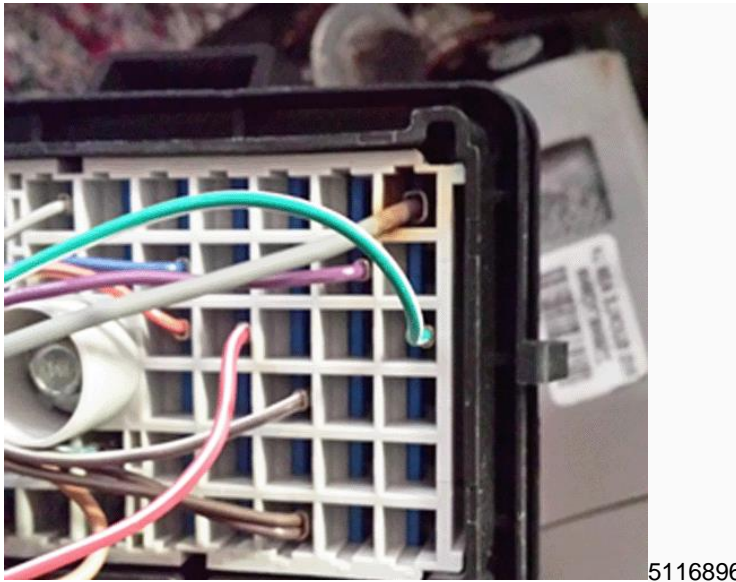
- Contact marks from the seat brackets. (Lucerne Only)



280787

## Special Coverage Adjustment

### 18226 Overheating of Fuel Relay or Motor Terminal



5116896

- Burnt wires or terminals at the F1 cavity.



5118031

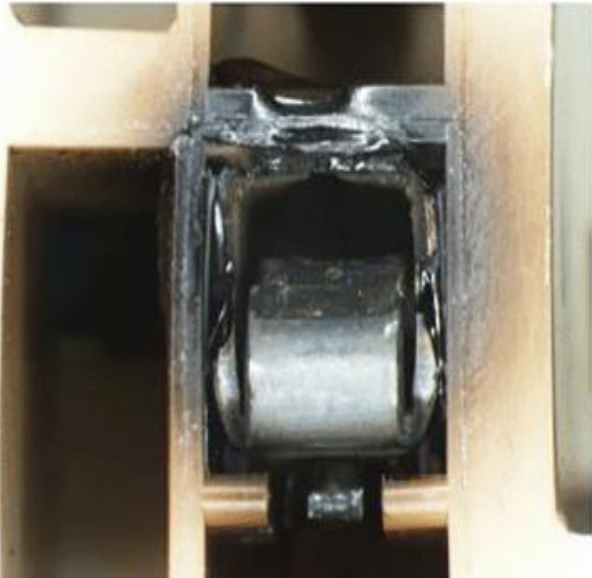
- Damaged and/or burnt X1 electrical connector.

## Special Coverage Adjustment

### 18226 Overheating of Fuel Relay or Motor Terminal



9. Remove the X1 connector from the REC.



4871417

10. Inspect the connector for any damaged or burnt terminals.



4871373

11. Inspect for any signs of warping or disfigurement caused by heat to the junction block (1).

If no damage is found, **Do Not** replace the fuse block, trim the seat brackets per the applicable section below (Lucerne Only) and refer to SI for further diagnostics.

If damage was found, proceed with repair.

## Special Coverage Adjustment

### 18226 Overheating of Fuel Relay or Motor Terminal



If no damage is found at the REC or the F1 cavity:

- Determine if vehicle has a tall (1) or short (2) Fuel Pump Relay.
- If the vehicle has a tall Fuel Pump Relay, replace the REC.
- Trim seat brackets. (Lucerne Only)
- Reposition REC. (DTS Only)

If any damage is found at the REC and not at the F1 cavity:

- Replace the REC.
- Trim seat brackets. (Lucerne Only)
- Reposition REC. (DTS Only)

If any damage is found at the REC and at F1 cavity:

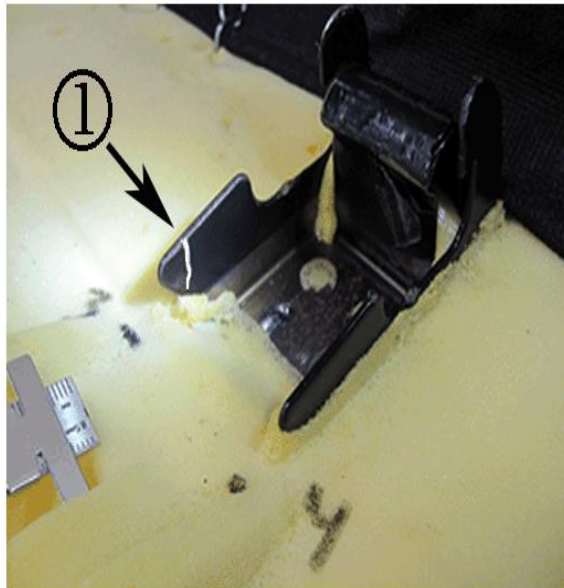
- Replace the REC.
- Repair the wire terminal at the F1 cavity.
- If required, replace the X1 connector.
- Trim seat brackets. (Lucerne Only)
- Reposition REC. (DTS Only)

# Special Coverage Adjustment

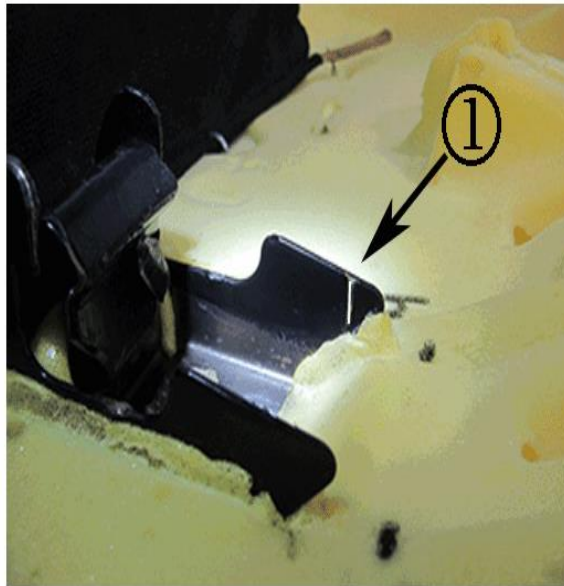
## 18226 Overheating of Fuel Relay or Motor Terminal



### Rear Seat Bracket Repair for Lucerne



4294546



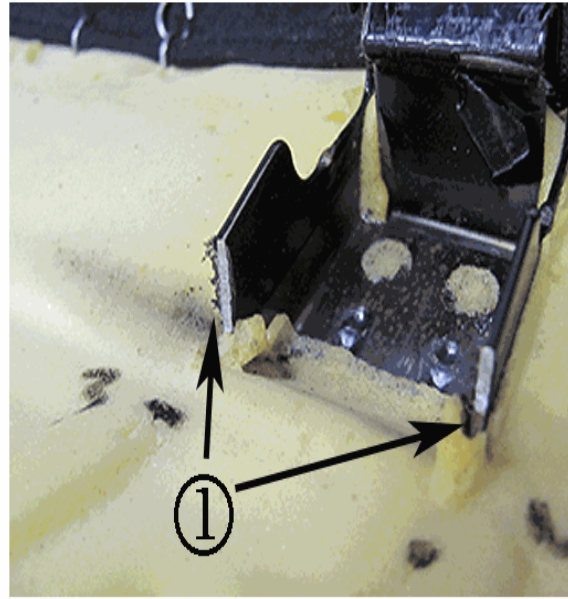
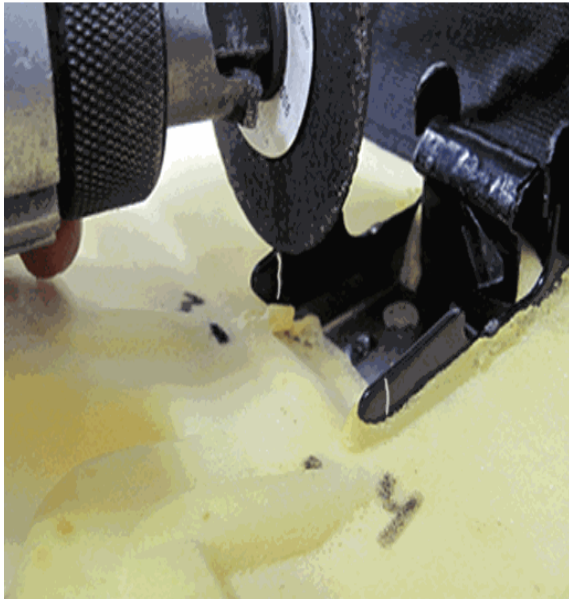
4294548

1. With the rear seat cushion on a bench, measure 5 mm (0.197 in) from each edge of the right side seat mount bracket and mark with a paint marker as shown (1).



## Special Coverage Adjustment

### 18226 Overheating of Fuel Relay or Motor Terminal



4294550

2. Using a cut off wheel or equivalent, carefully cut each side of the bracket as shown (1). Check for any rough edges and file if necessary.
3. Install the rear seat cushion.
4. Connect the battery.

#### [Rear Junction Block Positioning for DTS](#)

1. Loosen the nuts that secure the REC to the floor panel.
2. Position the rear electrical center towards the rear of vehicle.
3. Tighten the nuts to specifications. Refer to *Fastener Specifications* in SI.

#### **Courtesy Transportation – For USA & Canada**

Courtesy transportation is available for Customers whose vehicles are involved in a product program and still within the warranty coverage period. See General Motors Service Policies and Procedures Manual, Sections 1.4 and 6.1.10, for courtesy transportation program details.

#### **Customer Notification**

General Motors will notify Customers of this special coverage on their vehicle (see copy of typical Customer letter included with this bulletin).

#### **Customer Reimbursement**

Customer requests for reimbursement of previously paid repairs to correct the condition described in this bulletin are to be submitted to the dealer prior to or by January 31, 2020. See General Motors Service Policies and Procedures Manual, Section 6.1.11 – Product Field Action Customer Reimbursement Procedure (USA & Canada) or local Policies and Procedures, for details.

GM bulletins are intended for use by professional technicians, NOT a "do-it-yourselfer". They are written to inform these technicians of conditions that may occur on some vehicles, or to provide information that could assist in the proper service of a vehicle. Properly trained technicians have the tools, equipment, safety instructions, and know-how to do a job properly and safely. If a condition is described, DO NOT assume that the bulletin applies to your vehicle, or that your vehicle will have that condition. See your dealer for information on whether your vehicle may benefit from the information.



**We Support  
Voluntary Technician  
Certification**

# Special Coverage Adjustment

## 18226 Overheating of Fuel Relay or Motor Terminal



January 2019

This notice applies to your vehicle, **VIN:** \_\_\_\_\_

Dear General Motors Customer:

As the owner of a 2008-2011 model year Buick Lucerne or 2009-2011 Cadillac DTS, your satisfaction with our product is very important to us.

This letter is intended to make you aware that your 2008-2011 model year Buick Lucerne or 2009-2011 model year Cadillac DTS vehicle's rear-seat bracket could contact the vehicle's Rear Electrical Center (REC), which can, over time, damage electrical components within the REC enclosure. If damage occurs, the components can melt or overheat, which the customer may detect by a melting odor in the vehicle. Damage could also cause the vehicle's battery to drain, a no-start condition, or a stall.

**Do not take your vehicle to your GM dealer as a result of this letter unless you believe that your vehicle has the condition as described above.**

**What We Have Done:** General Motors is providing owners with additional protection for the condition described above. If this condition occurs on your 2008-2011 model year Buick Lucerne or 2009-2011 model year Cadillac DTS within 10 years of the date your vehicle was originally placed in service or 120,000 miles (193,000 km), whichever occurs first, the condition will be repaired for you at **no charge**. Diagnosis or repair for conditions other than the condition described above is not covered under this special coverage program.

**What You Should Do:** If you believe that your vehicle has the condition described above, repairs and adjustments qualifying under this special coverage must be performed by a General Motors dealer. You may want to contact your GM dealer to find out how long they will need to have your vehicle so that you may schedule the appointment at a time that is convenient for you. This will also allow your dealer to order parts if they are not already in stock. Keep this letter with your other important glove box literature for future reference.

**Reimbursement:** If you have already paid for repairs for the condition described in this letter, please complete the enclosed reimbursement form and present it to your dealer with all required documents. Working with your dealer will expedite your request, however, if this is not convenient, you may mail the completed reimbursement form and all required documents to Reimbursement Department, PO Box 33170, Detroit, MI 48232-5170. The completed form and required documents must be presented to your dealer or received by the Reimbursement Department by January 31, 2020, unless state law specifies a longer reimbursement period.

The right to submit reimbursement claims is provided by GM solely in the interest of customer satisfaction and is personal to vehicle owners and lessees who previously paid for repairs referenced in this Special Coverage ("Customers"). **Customers may not assign and GM does not consent to any assignment of any Customer's right to submit reimbursement claims, or to receive reimbursement, or any other rights granted by this Special Coverage to any third party, including but not limited to service contract providers, and this Special Coverage is not intended to and does not confer any third party beneficiary, subrogation or contribution rights, or any other rights to reimbursement, against GM, whether in law, equity or otherwise, on any third parties.**

If you have any questions or need any assistance, please contact your dealer or the appropriate Customer Assistance Center at the number listed below.

Division	Number	Text Telephones (TTY)
Buick	1-800-521-7300	1-800-832-8425
Cadillac	1-800-458-8006	1-800-833-2622
Puerto Rico – English	1-800-496-9992	
Puerto Rico – Español	1-800-496-9993	
Virgin Islands	1-800-496-9994	

We are sorry for any inconvenience you may experience; however, we have taken this action in the interest of your continued satisfaction with our products.

Neelie O'Connor  
Executive Director  
North America Contact Center Operations

Enclosure  
18226