



Service Bulletin


Bulletin No.: 21-NA-100

Date: April, 2021

TECHNICAL

Subject: Video Player Unavailable – No SD card present Messages Displayed

Brand:	Model:	Model Year:		VIN:		Engine:	Transmission:
		from	to	from	to		
Cadillac	XT6	2020	2020	—	—	—	—

Involved Region or Country	North America, Russia, Middle East, Israel, Japan, Cadillac Korea (South Korea)
Condition	<p>Some customers may comment on the following messages, "Video Player Unavailable" and "No SD Card Present" on the radio display.</p> <div style="text-align: center;">  </div> <p style="text-align: right; font-size: small;">5795667</p>
Cause	The cause of the condition may be software anomalies.
Correction	Reprogram the VPM (Video Processing Module).

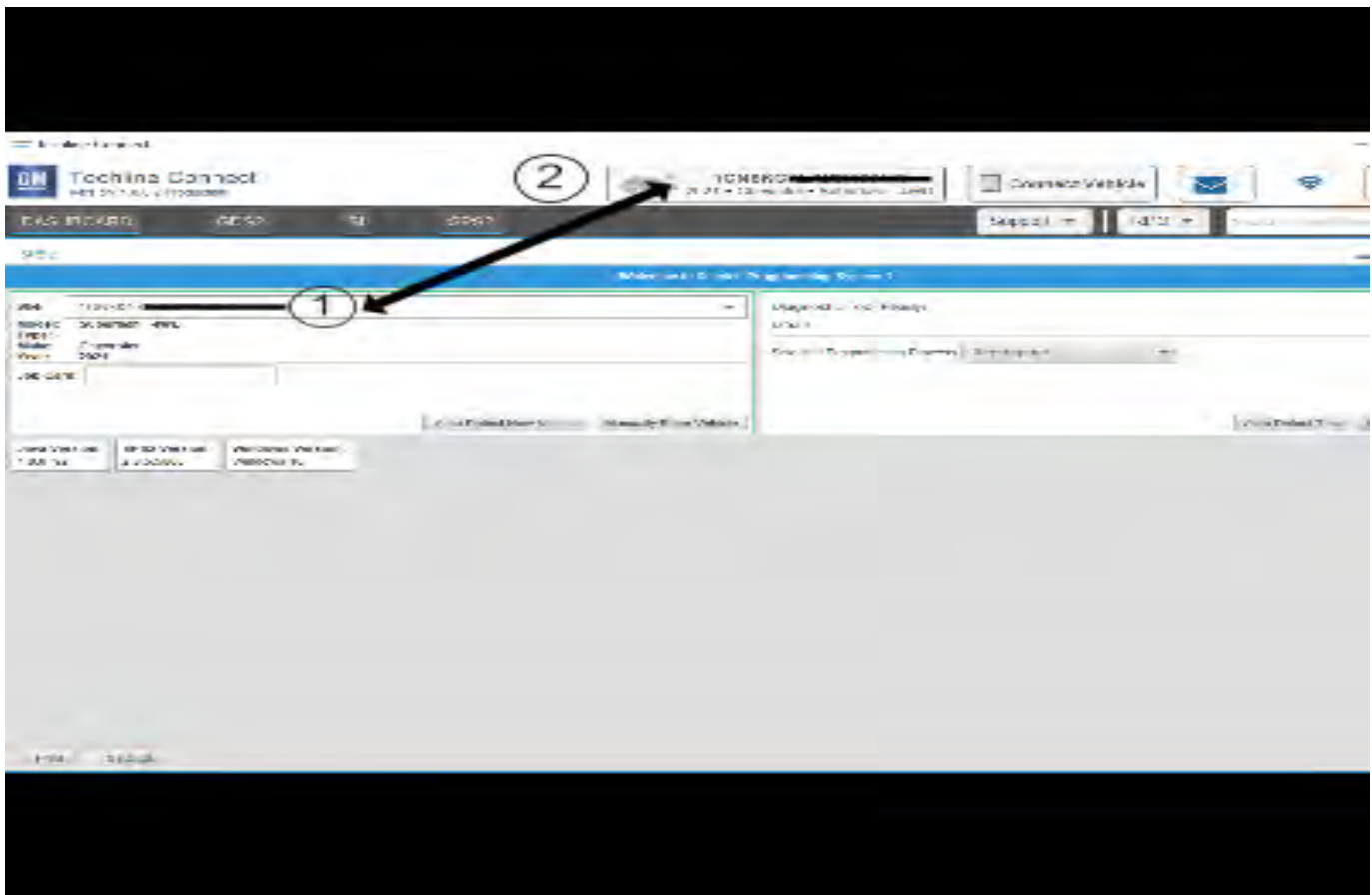
Service Procedure

Caution: Before downloading the update files, be sure the computer is connected to the internet through a network cable (hardwired). DO NOT DOWNLOAD or install the files wirelessly. If there is an interruption during programming, programming failure or control module damage may occur.

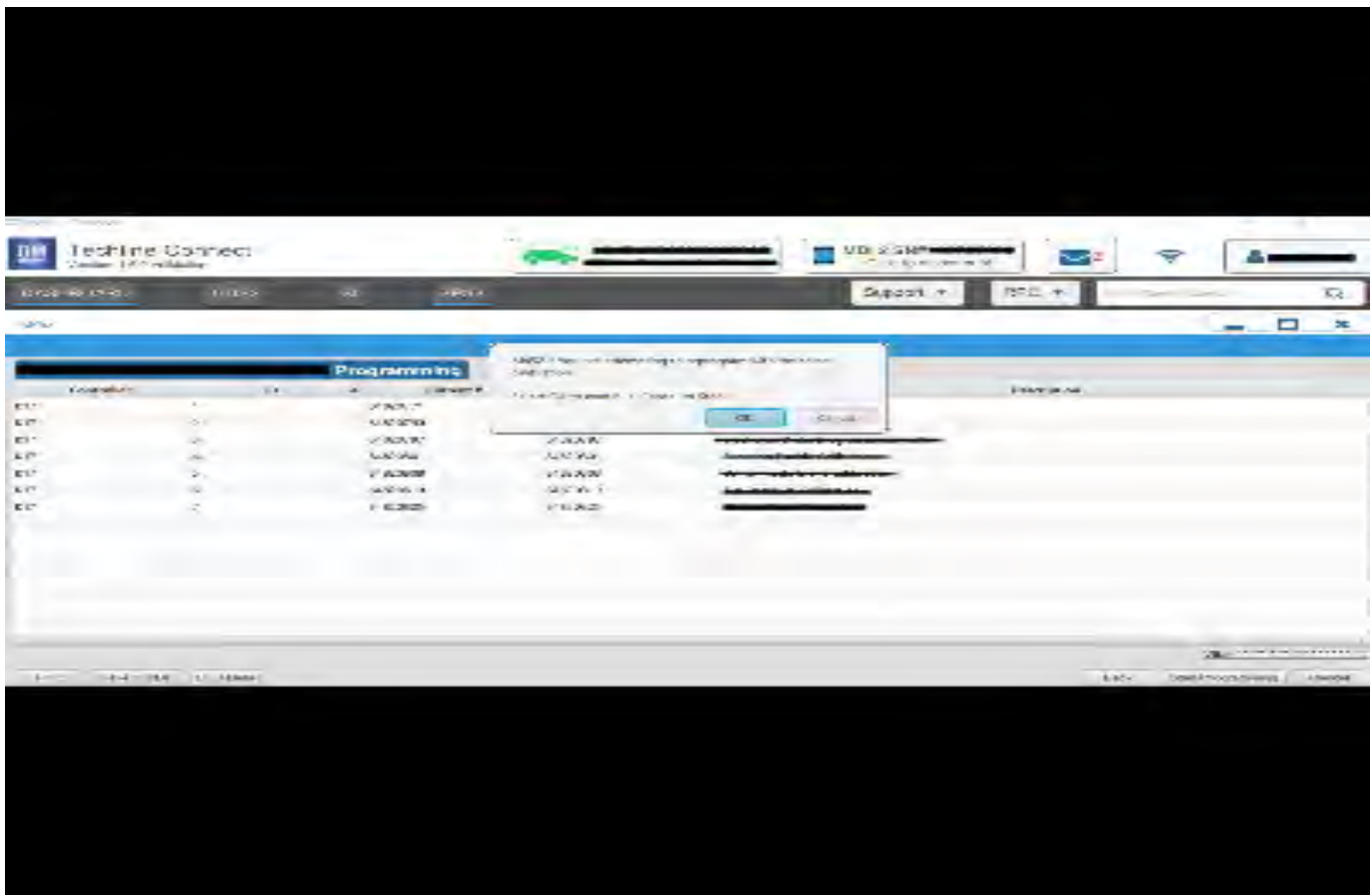
Note: Carefully read and follow the instructions below.

- Ensure the programming tool is equipped with the latest software and is securely connected to the data link connector. If there is an interruption during programming, programming failure or control module damage may occur.
- Stable battery voltage is critical during programming. Any fluctuation, spiking, over voltage or loss of voltage will interrupt programming. Install a GM Authorized Programming Support Tool to maintain system voltage. Refer to www.gmdesolutions.com for further information. If not available, connect a fully charged 12V jumper or booster pack disconnected from the AC voltage supply. DO NOT connect a battery charger.
- Turn OFF or disable systems that may put a load on the vehicles battery such as; interior lights, exterior lights (including daytime running lights), HVAC, radio, etc.
- Clear DTCs after programming is complete. Clearing powertrain DTCs will set the Inspection/Maintenance (I/M) system status indicators to NO.

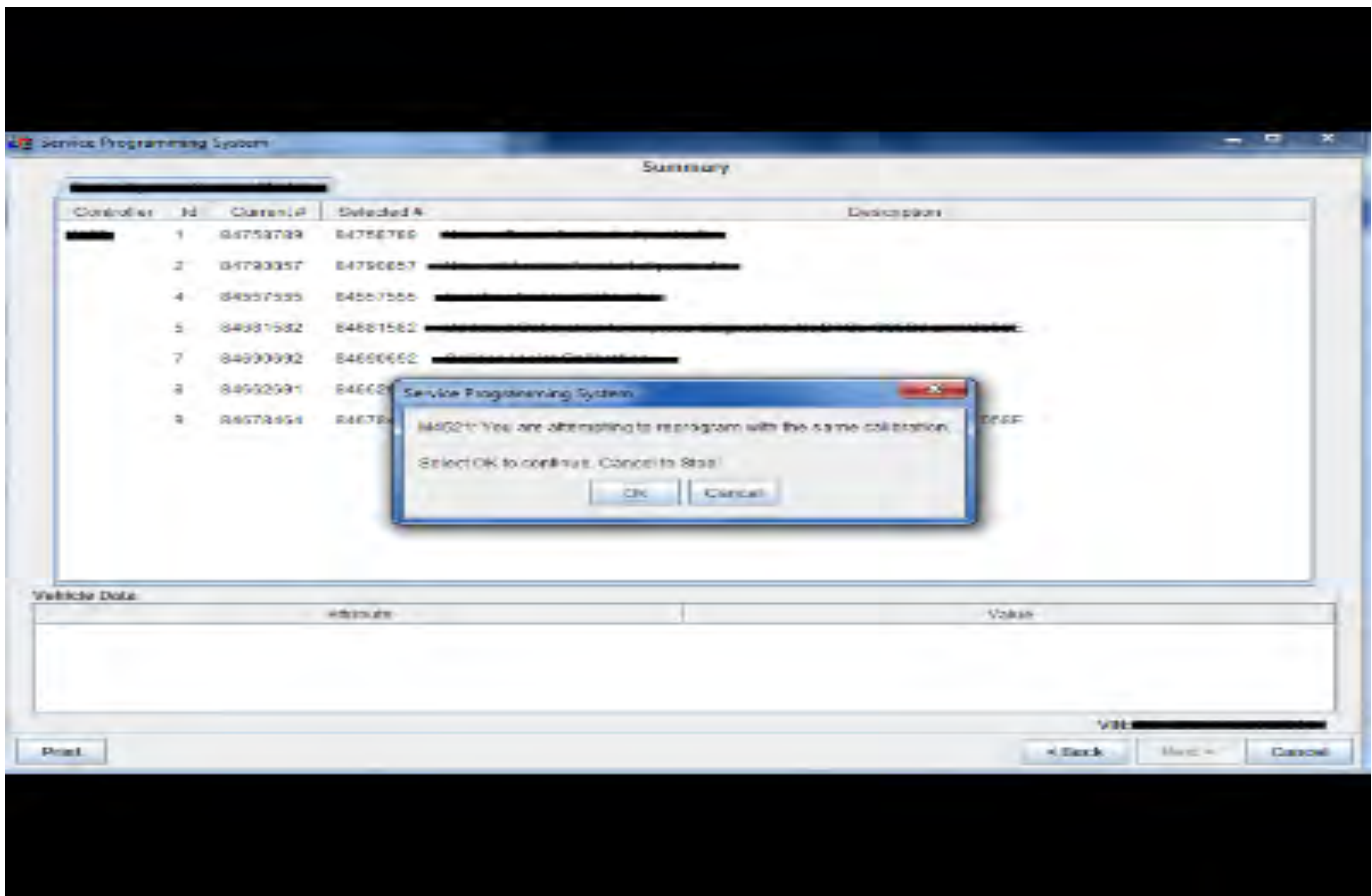
Caution: Be sure the VIN selected in the drop down menu (1) is the same as the vehicle connected (2) before beginning programming.



5743643



5644477



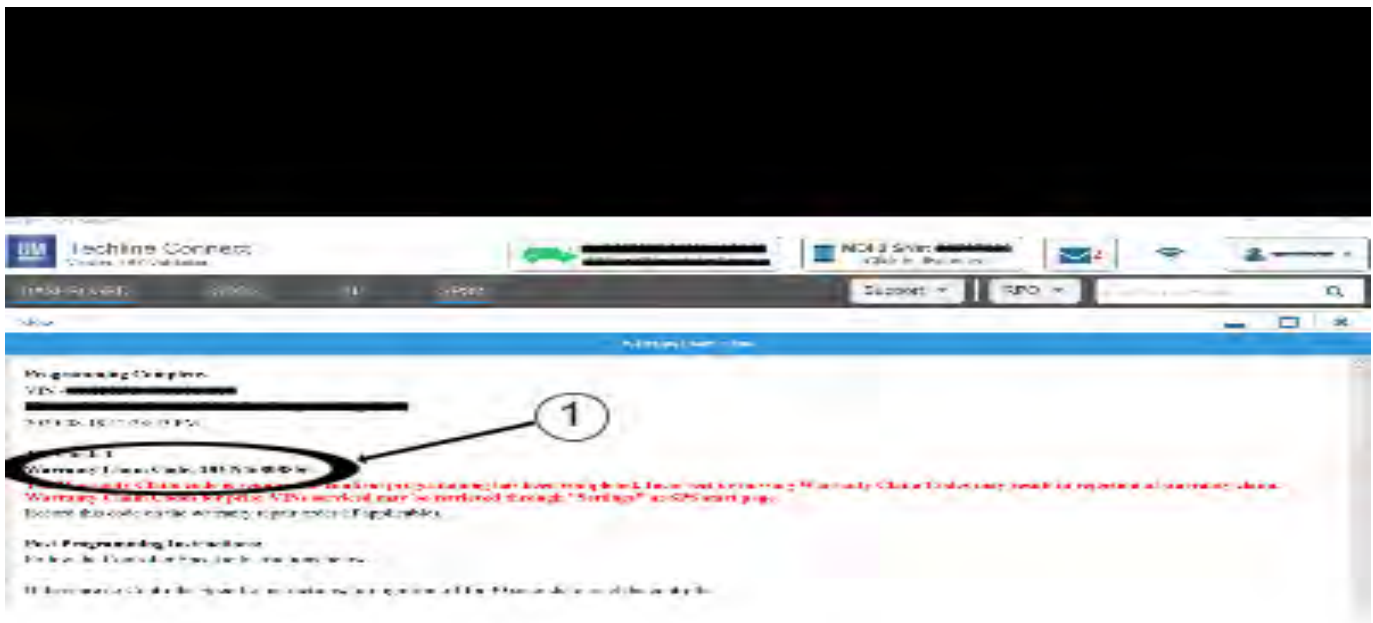
5431207

Important: Techline Connect and TIS2WEB screens shown above.

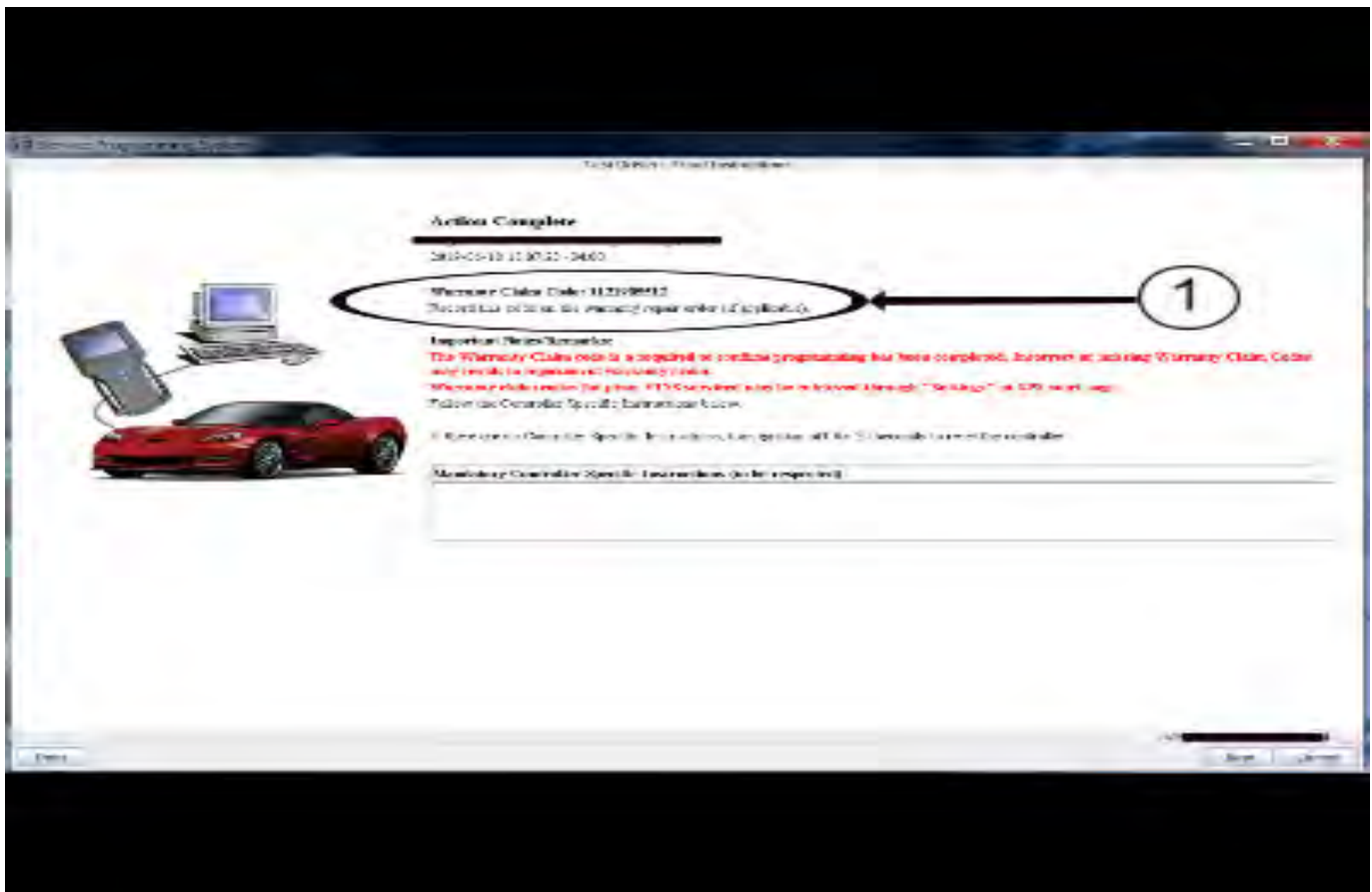
Important: If the same calibration/software warning is noted on the TLC or SPS Summary screen, select OK and follow screen instructions. After a successful programming event, the WCC is located in the Service Programming System dialogue box of the SPS Summary screen. No further action is required. Refer to the Warranty Information section of this bulletin.

Important: When programming a module in GM's new Vehicle Intelligence Platform, or VIP, the power mode (ignition) needs to be off or errors may occur. This involves the 2020 Chevrolet Corvette, Cadillac CT5 and CT4, as well as the upcoming full-size Chevrolet, GMC, Cadillac SUVs and Buick Envision. Serial Data Message Authentication also needs to have the ignition off.

1. Reprogram the Video Processing Module. Refer to *K157 Video Processing Control Module: Programming and Setup* in SI.



5644478



5431209

Note: The screenshots above are an example of module programming and may not be indicative of the specific module that is being programmed. Module selection and VIN information have been blacked out.

Important: To avoid warranty transaction rejections, you **MUST** record the warranty claim code provided on the SPS Warranty Claim Code (WCC) screen shown above on the job card. Refer to callout 1 above for the location of the WCC on the SPS screen.

- Record the SPS Warranty Claim Code on the job card for warranty transaction submission.

Warranty Information

For vehicles repaired under the Bumper-to-Bumper coverage (Canada Base Warranty coverage), use the following labor operation. Reference the Applicable Warranties section of Investigate Vehicle History (IVH) for coverage information.

Labor Operation	Description	Labor Time
2887258*	Reprogram Video Processing Module for NO SD card present	1.7 hrs

*This is a unique Labor Operation for bulletin use only.

Important: To avoid warranty transaction rejections, carefully read and follow the instructions below:

- The Warranty Claim Code must be accurately entered in the "SPS Warranty Claim Code" field of the transaction.
- When more than one Warranty Claim Code is generated for a programming event, it is required to document all Warranty Claim Codes in the "Correction" field on the job card. Dealers must also enter one of the codes in the "SPS Warranty Claim Code" field of the transaction, otherwise the transaction will reject. It is best practice to enter the FINAL code provided by SPS/SPS2.

Warranty Claim Code Information Retrieval

If the SPS Warranty Claim Code was not recorded on the Job Card, the code can be retrieved in the SPS system as follows:

- Open TLC/TIS on the computer used to program the vehicle.
- Select and start SPS/SPS2.
- Select Settings.
- Select the Warranty Claim Code tab.

The VIN, Warranty Claim Code and Date/Time will be listed on a roster of recent programming events. If the code is retrievable, dealers should resubmit the transaction making sure to include the code in the SPS Warranty Claim Code field.

Version	1
Modified	Released April 23, 2021

GM bulletins are intended for use by professional technicians, NOT a "do-it-yourselfer". They are written to inform these technicians of conditions that may occur on some vehicles, or to provide information that could assist in the proper service of a vehicle. Properly trained technicians have the equipment, tools, safety instructions, and know-how to do a job properly and safely. If a condition is described, DO NOT assume that the bulletin applies to your vehicle, or that your vehicle will have that condition. See your GM dealer for information on whether your vehicle may benefit from the information.



WE SUPPORT VOLUNTARY
TECHNICIAN
CERTIFICATION