

Hide Details

Coding Information

Copy Link 	Copy Relative Link 	Bookmark View My Bookmarks	Add to Favorites 	Print 	Provide Feedback 	Helpful 3	Not Helpful 0
---------------	------------------------	---	----------------------	-----------	----------------------	------------------	----------------------

Title: Radio Clock Changes Time Automatically

Applies To: Vehicles built after March 2020 - Excluding CV

CHANGE LOG

Please refer to the change log text box below for recent changes to this article:

04/22/2021 - Initial Article Release.

DESCRIPTION

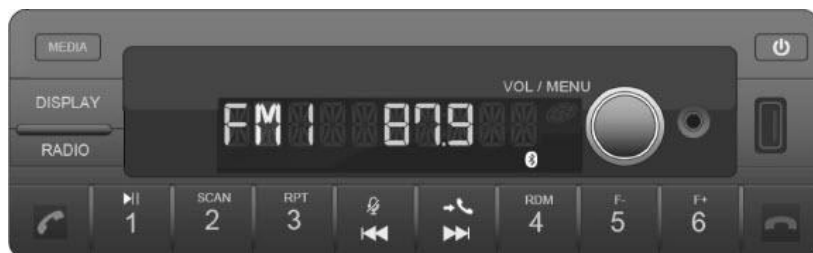
The radio found in all models may change the displayed time when the radio station is changed. This may result in the clock changing time zones or displaying an inaccurate time. The radio receives the time as part of the Radio Data System (RDS) information received from the radio station that you are tuned to. The radio software can be updated to remove time information so the clock will only use the manually set time and ignore the time information from RDS.

NOTE:

The software update only applies to the part numbers listed.

Radio part number can be located on the tag on the top of the radio, or in parts catalog for the VIN you are working on

4154492C1
 4154490C1
 4154488C1
 4154494C91
 4154497C91



SYMPTOMS

Diagnostic Trouble Codes & Dashboard Indicator Lights:

DTC/Light	Description
No Faults or Warning Lights	

Customer Observations or Concerns:

- Radio clock may be inaccurate
- Radio clock may change time after changing radio stations

SPECIAL TOOLS / SOFTWARE

Tool Description	Tool Number	Comments	Instructions
USB Flash Drive			Obtain Locally

SERVICE PARTS INFORMATION

Kit Description	Part Number	Quantity Required	Notes
Not Applicable			

DIAGNOSTIC STEPS

Step	Action	Decision
#1	DIAGNOSTIC: Is there a driver complaint of the clock changing time or displaying inaccurate time?	Yes: Update the radio software following the Repair Steps. No: Repair complete, no action required.

REPAIR STEP(S)

You will need to download the radio software and place the files onto a USB flash drive. Then insert the flash drive to the radio and update the radio software.

Download radio software to your computer:

1. Radio software ZIP file ([Click Here](#))
2. Open the .zip folder shown at the bottom of the screen (Figure 1, Item 1)


Figure 1 - Open the downloaded .zip folder

REPAIR STEP(S)

You will need to download the radio software and place the files onto a USB flash drive. Then insert the flash drive to the radio and update the radio software.

Download radio software to your computer:

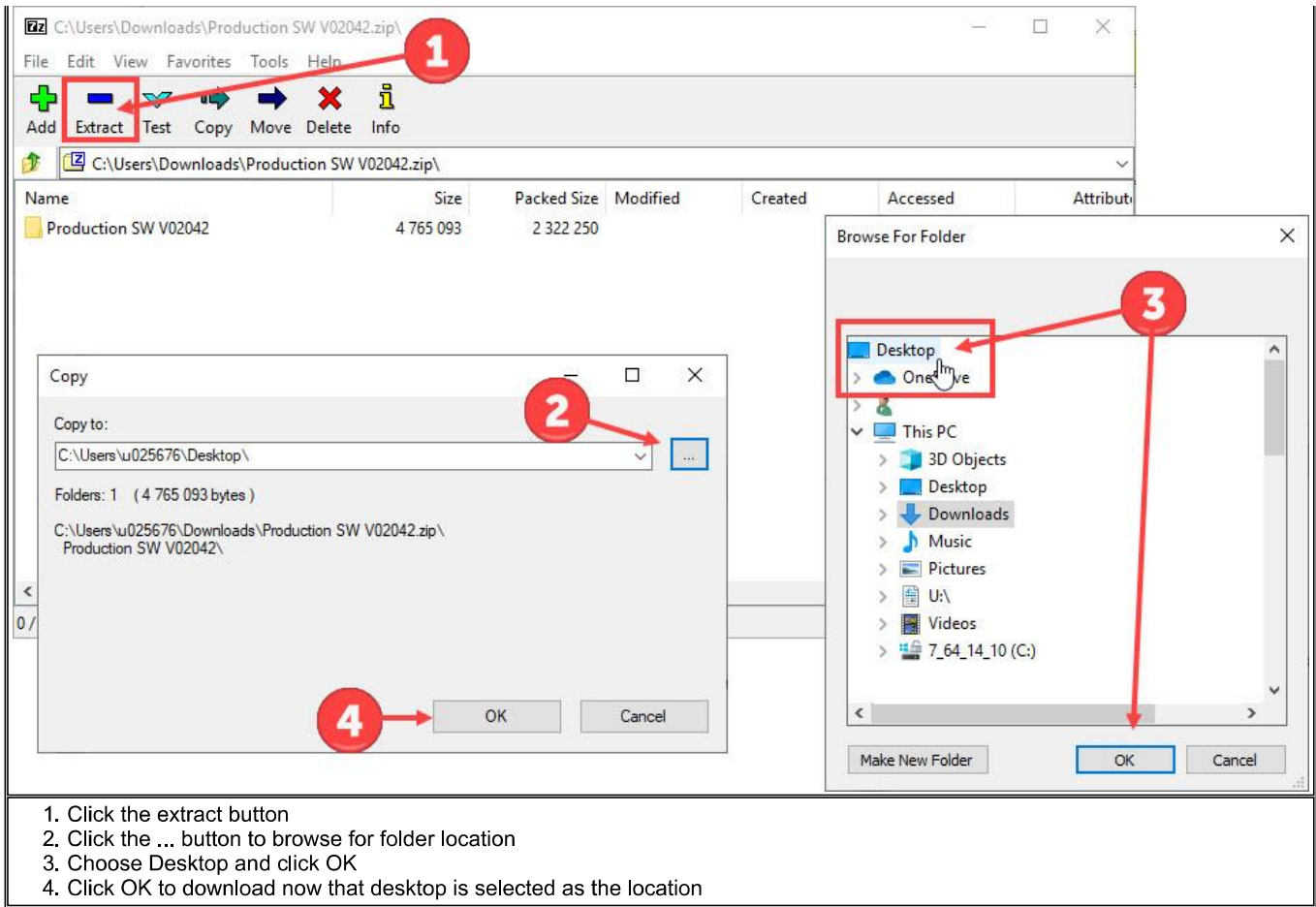
1. Radio software ZIP file ([Click Here](#))
2. Extract the folder to your computer desktop



1. Open the downloaded .zip folder found at the bottom of the screen

3. Extract the folder to your computer desktop (Figure 2, Items 1 - 4)

Figure 2 - Extract the folder from the .zip file



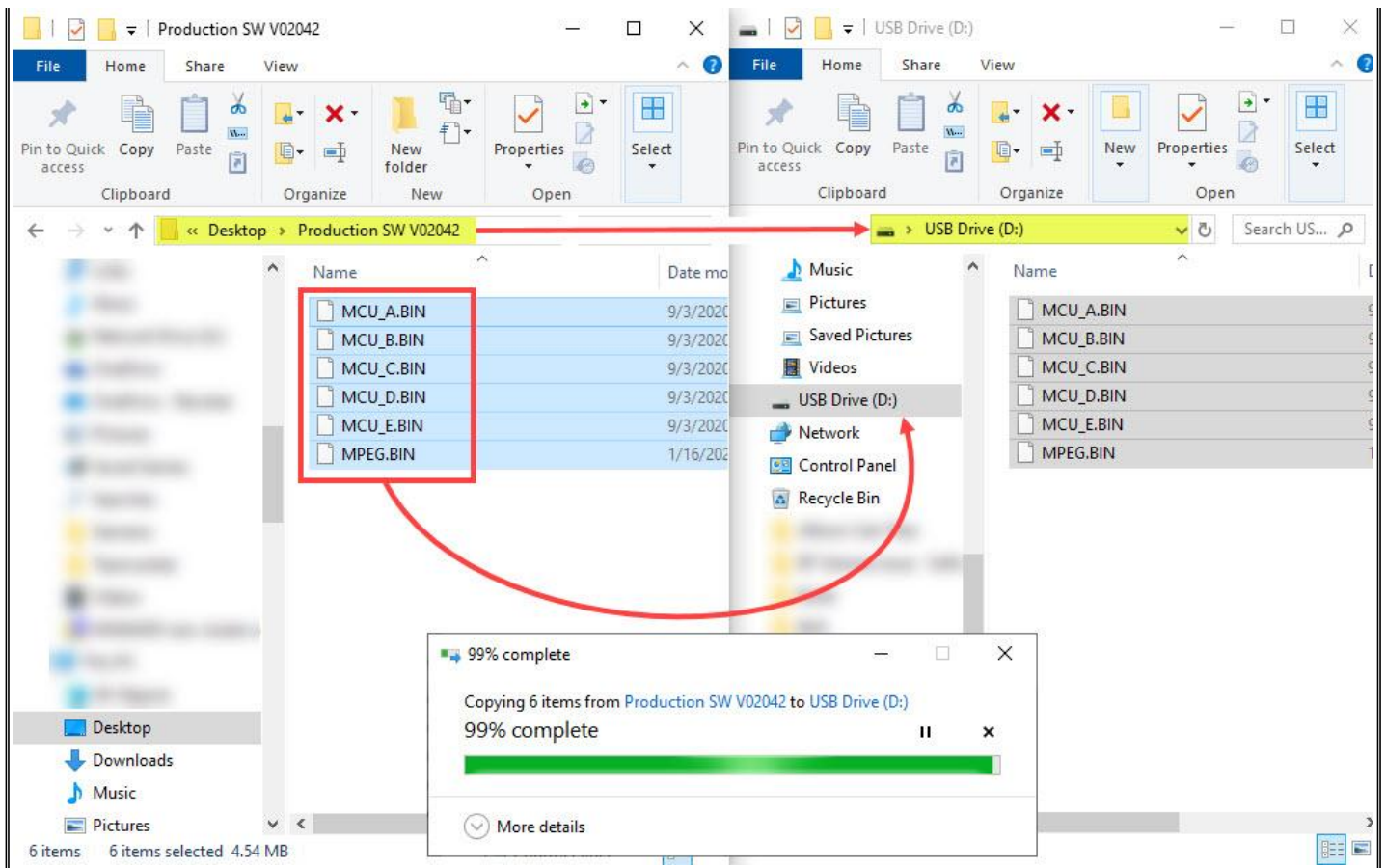
Move the files to a USB Flash Drive

NOTE:

Once the files are on a flash drive, you can use the flash drive to update multiple radios/vehicles.

1. Insert a USB Flash Drive into your computer
2. Open the USB Flash Driver Folder
3. Open the Production SW V02042 Folder
4. Transfer all 6 files from the folder to the USB Flash Drive (Figure 3)

Figure 3 - Transferring Files to USB Flash Drive



Install the Flash Drive into the radio and update software

NOTE:

Programming is a two part process.

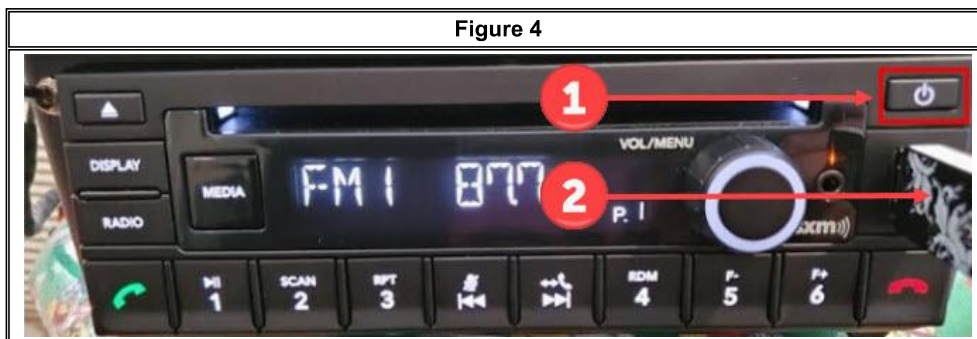
- A. Update MCU
- B. Update DEC

Steps 1-9 update the MCU

Steps 10-12 check and update the DEC if needed

Steps 13-17 verify MCU and DEC are up to date and complete repair

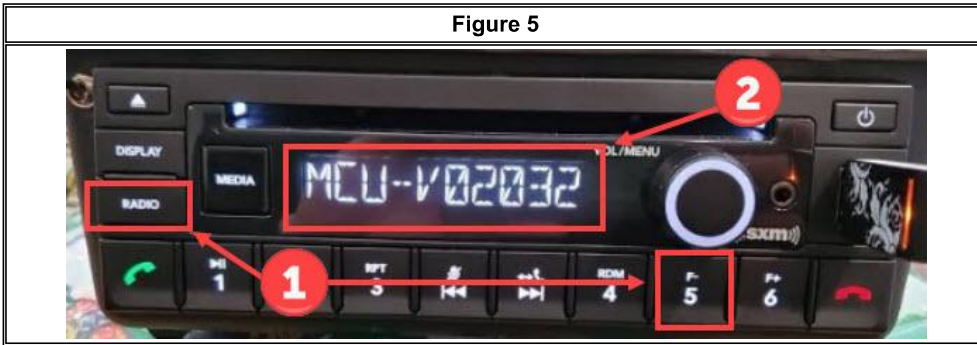
1. Turn the key to the Accessory position
 - If the radio does not power on automatically, press the power button to turn the radio on (Figure 4, Item 1)
2. Plug the USB Flash Drive into the radio (Figure 4, Item 2)



3. After plugging in the USB flash-drive, the radio will display "USB" → "READING" → "USB ERROR". It displays "USB ERROR" because there is no media file in the USB. This is OK.
4. Press and hold the "Radio" and "5" button at the same time to enter software hidden menu. (Figure 5, Item 1)

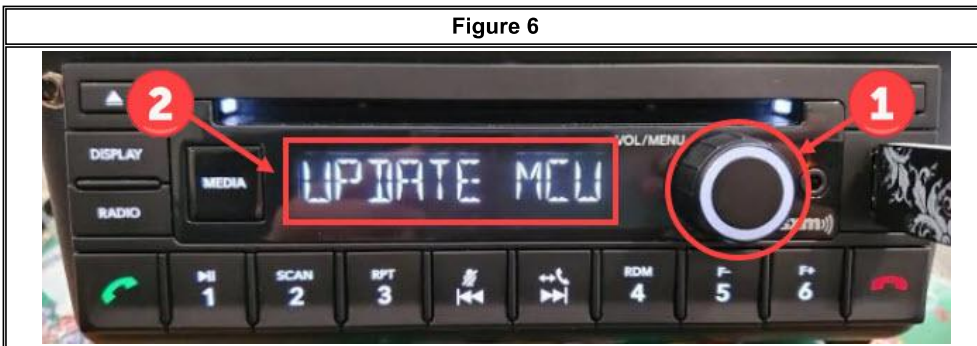
5. The radio displays the software hidden menu and current software. (Figure 5, Item 2) Software ending in 42 has the change to remove time information so the clock will only use the manually set time and ignore the time information from RDS.

Figure 5



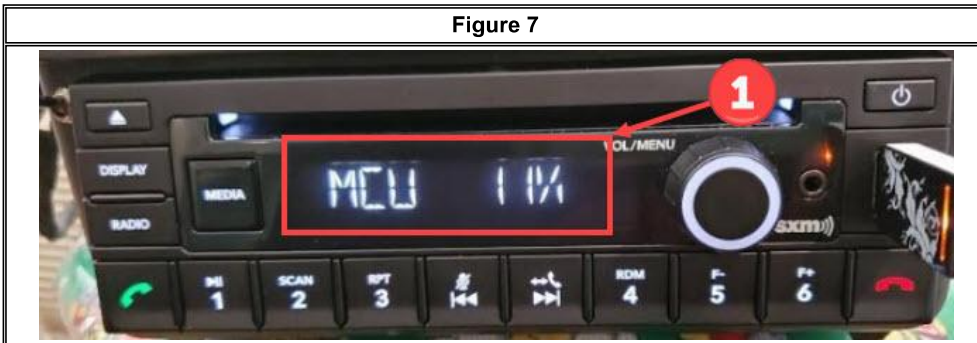
6. Turn the knob (Figure 6, Item 1) to scroll through the options in the hidden menu until "UPDATE MCU" is displayed (Figure 6, Item 2). Press the knob to select "UPDATE MCU". The radio will begin to update.

Figure 6



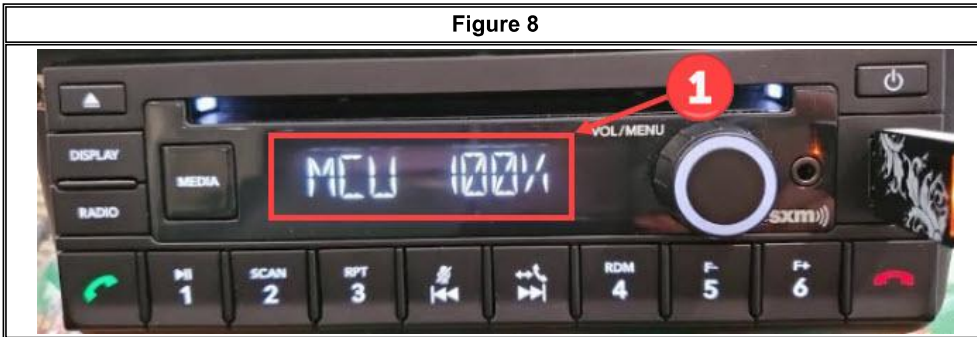
7. The radio is updating the MCU. (Figure 7, Item 1 showing 11% complete)

Figure 7



8. Wait until the MCU update is complete (Figure 8, Item 1 showing 100% complete). After the MCU update is complete, the radio will automatically restart.

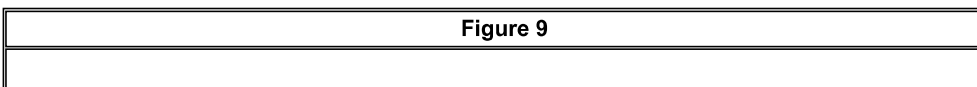
Figure 8



9. After the restart, again press and hold the "Radio" and "5" button at the same time to enter software hidden menu. (Figure 9, Item 1)

10. Turn the knob to scroll through the options in the hidden menu until "DEC" version is displayed. (Figure 9, Item 2)
- o If "DEC" displays V0.27, press any key to exit the menu and continue to Step 13
 - o If "DEC" is not at V0.27 continue to Step 11

Figure 9





11. Turn the knob (Figure 10, Item 1) to scroll through the options in the hidden menu until “UPDATE DEC” is displayed (Figure 10, Item 2). Press the knob to select “UPDATE DEC”.

Figure 10



12. The radio will display “LOADING” → “INITIAL” (Figure 11, Item 1) and begin updating. After the DEC update is complete (DEC 100%), the radio will automatically restart

Figure 11



13. After the restart, again press and hold the “RADIO” and “5” button (Figure 12, Item 1) to enter the software hidden menu again. Make sure the MCU version (Figure 12, Item 2) is correct per the radio part number as outlined in table below.

Radio Part Number	Radio MCU Version
41544 <u>92</u> C1	MCU--02042 <u>A</u>
41544 <u>90</u> C1	MCU--02042 <u>B</u>
41544 <u>88</u> C1	MCU--02042 <u>C</u>
41544 <u>94</u> C91	MCU--02042 <u>D</u>
41544 <u>97</u> C91	MCU--02042 <u>E</u>

Figure 12



14. While still in the software hidden menu, also make sure the “DEC” version is correct by scrolling the knob (Figure 12, Item 1) until “DEC--V0.27” is displayed.

Figure 12



15. Turn the key position to OFF.
16. Remove the USB flash-drive.
17. Software update is now complete

WARRANTY INFORMATION

Warranty Claim Coding:

Refer to the [Warranty Coding Manual](#) for Group and Noun Codes.

Standard Repair Time(s):

Refer to the [SRT Manual](#) for Repair Times

OTHER RESOURCES

[Master Service Information Site](#)

 Hide Details

Feedback Information

Viewed: 93
Helpful: 3
Not Helpful: 0

No Feedback Found