

Y1A Taycan

On Board Charger (OBC) Fault P31D200 “Charging Socket – Overtemperature”

Vehicles Affected

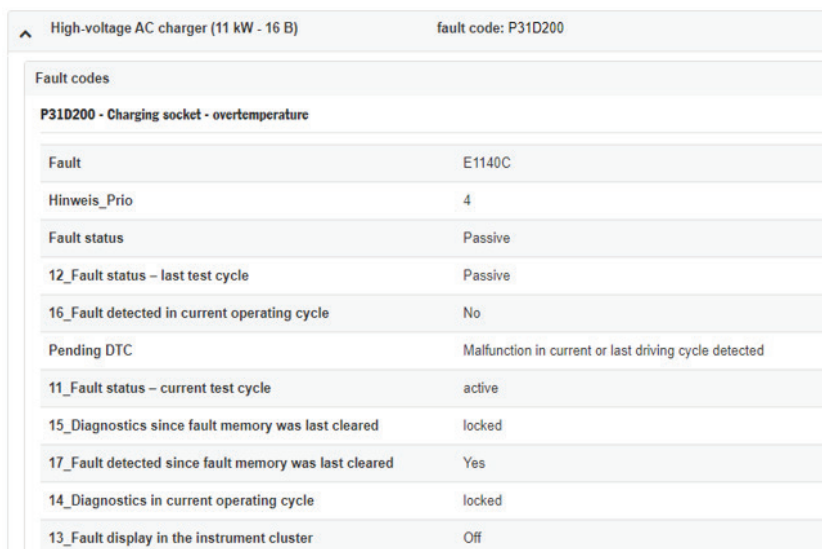
Models	Model Year	Model Type	VIN Range	Vehicle-Specific Equipment
Taycan	As of 2020 up to 2021	Y1A	N/A	N/A

Revision History

Revision	Release Date	Changes
0	April 5, 2021	Original document

Condition

The customer reports that the vehicle intermittently stops charging while using the Porsche Mobile Charger Connect and associated cables. The workshop is able to confirm this condition using the customer's charging hardware, and the On Board Charger (OBC) has stored fault code P31D200 “Charging socket – overtemperature”.



High-voltage AC charger (11 kW - 16 B)		fault code: P31D200
Fault codes		
P31D200 - Charging socket - overtemperature		
Fault	E1140C	
Hinweis_Prio	4	
Fault status	Passive	
12_Fault status – last test cycle	Passive	
16_Fault detected in current operating cycle	No	
Pending DTC	Malfunction in current or last driving cycle detected	
11_Fault status – current test cycle	active	
15_Diagnostics since fault memory was last cleared	locked	
17_Fault detected since fault memory was last cleared	Yes	
14_Diagnostics in current operating cycle	locked	
13_Fault display in the instrument cluster	Off	

Figure 1

Technical Background

This topic remains under investigation. This document will be updated with additional information when available.

Service Information

It is recommended to check the temperature of the customer's charging hardware while charging a Taycan for at least 1 hour. Pay close attention to the temperature of the charging handle & plug connector of the customer-supplied vehicle cable.

Monitor the temperature of the vehicle cable, the charge port and associated hardware and compare to another known-good set of charging cables used in similar conditions.

Check if high temperatures at the vehicle cable charge handle follow the vehicle cable by charging another vehicle using the same hardware.

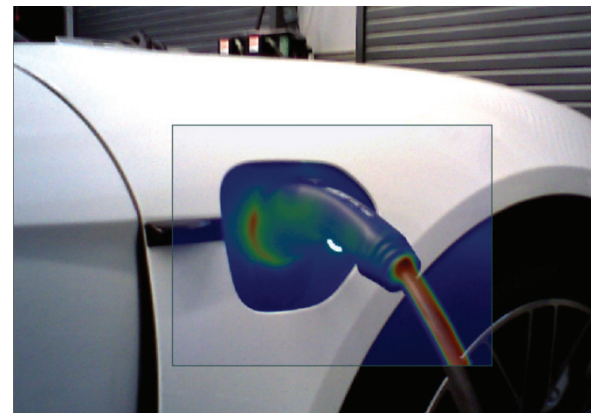


Figure 2

This topic remains under investigation. This document will be updated with additional information when available.

Warranty

Warranty work should be documented per standard policies and procedures.

Search Items

Mobile charger connect, PMCC, EVSE, charger, on board charger, OBC, socket, temperature, P31D200

Important Notice: Technical Bulletins issued by Porsche Cars North America, Inc. are intended only for use by professional automotive technicians who have attended Porsche service training courses. They are written to inform those technicians of conditions that may occur on some Porsche vehicles, or to provide information that could assist in the proper servicing of a vehicle. Porsche special tools may be necessary in order to perform certain operations identified in these bulletins. Use of tools and procedures other than those Porsche recommends in these bulletins may be detrimental to the safe operation of your vehicle, and may endanger the people working on it. Properly trained Porsche technicians have the equipment, tools, safety instructions, and know-how to do the job properly and safely. Part numbers listed in these bulletins are for reference only. The work procedures updated electronically in the Porsche PIWIS diagnostic and testing device take precedence and, in the event of a discrepancy, the work procedures in the PIWIS Tester are the ones that must be followed.