

**Symptom in Vehicle Interior - Water Noise (Sloshing) During Acceleration/Braking or Water Leaking Into Rear Footwell (SY 224/20)**

Change overview

| Version | Date       | Change  |
|---------|------------|---|
| 0       | 02/01/2021 | First publication   |
| 1       | 04/07/2021 | <ul style="list-style-type: none"> <li>'Action required' section added</li> <li>Technical Information (TI) enhanced with additional remedial actions</li> </ul> |

Model Line: **Taycan (Y1A)**

Model Year: **As of 2020 up to 2021**

Concerns: **Water drains on the high-voltage battery protective plate**

Symptom: Water noise audible in the underbody area during acceleration and braking.  
In addition, water may leak into the rear-seat footwells.

Cause: Dirt particles can cause the water drains on the high-voltage battery protective plate to become blocked and result in water not draining away.

Action required: Depending on whether water noise is audible or if water leakage into the rear footwell is determined, the following measures must be carried out:

- Water noise is audible, but **no water leakage** into the rear footwell is determined: Rework water drains. For instructions, see: ⇒ *Technical Information 'Reworking water drains'*
- Water leakage into rear footwell determined: Rework water drains **and** foot garages. For instructions, see: ⇒ *Technical Information 'Reworking water drains'* and ⇒ *Technical Information 'Reworking foot garages'*



**Information**

Optimized water drains are still being developed at present and are not yet available. Replacing the water drains will therefore not correct the problem.

**Required materials as required**

Materials:



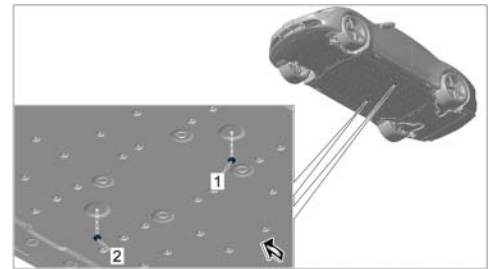
**Information**

The material is only required for reworking the foot garages.

| Part No.    | Designation<br>- Use                  | Qty.                  |
|-------------|---------------------------------------|-----------------------|
| 00004330532 | ⇒ Sealing compound<br>- Foot garages  | 1 ea.                 |
| 00004330516 | ⇒ Coolant additive 20 liter/ 5.28 gal | 0.5 liter/ 16.9 fl oz |

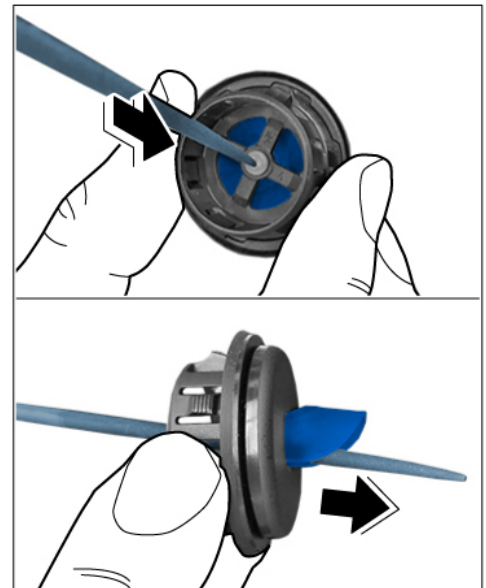
### Subsequent work on water drains

- Work Procedure: 1 Raise the vehicle, see ⇒ *Workshop Manual '4X00IN Lifting the vehicle'*.
- 2 Remove both water drains ⇒ *Water drain on protective plate -1-* and ⇒ *Water drain on protective plate -2-* from the high-voltage battery protective plate using a suitable tool.



*Water drain on protective plate*

- 3 Press integral ⇒ *Water drain -top-* membrane out of the water drain from the inside out using a suitable tool.



*Water drain*

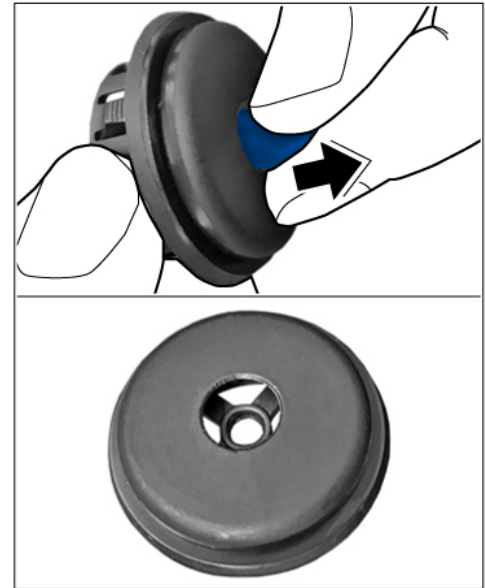
- 4 Remove integral membrane from the water drain ⇒ *Water drain -bottom-*.



### Information

Complete Steps 2 and 3 on **both** water drains.

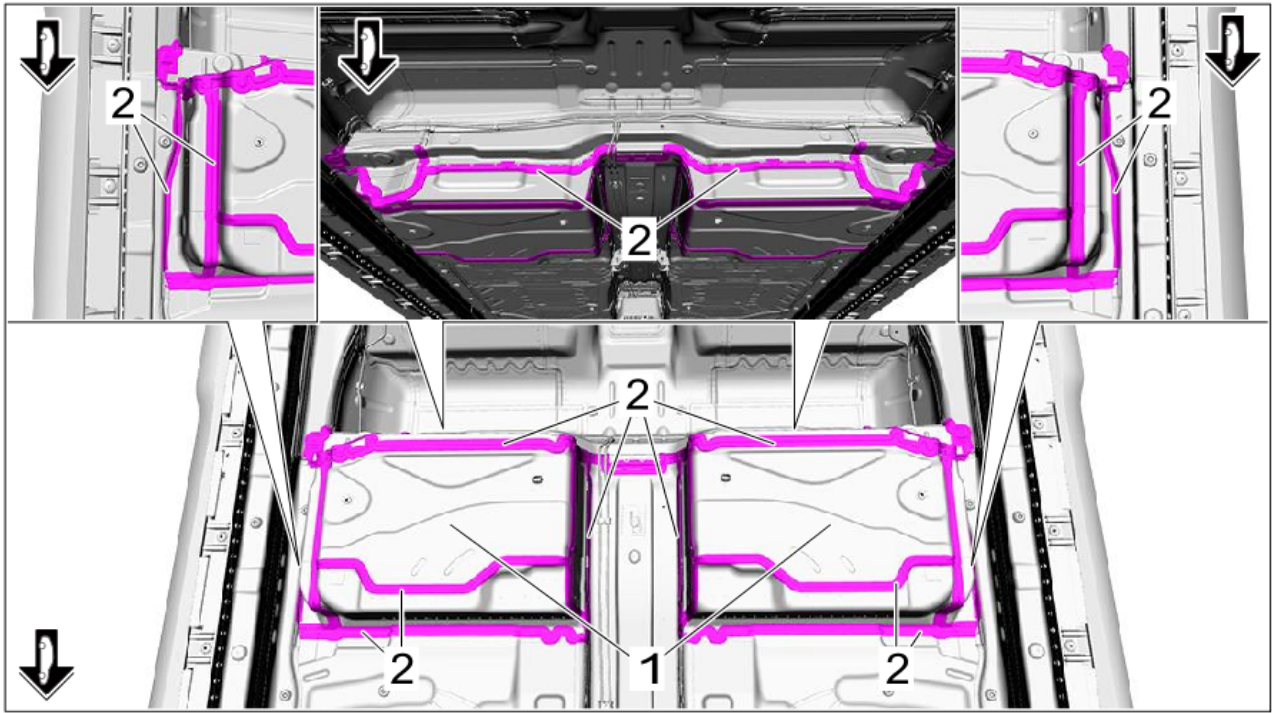
- 5 Re-install water drain **without** membrane in the high-voltage battery protective plate.
- If water has leaked in the foot garage, continue with ⇒ *Technical Information '4X00IN Reworking foot garage'*.
  - If **no** water leakage into the foot garage is determined, lower the vehicle, see ⇒ *Workshop Manual '4X00IN Lifting the vehicle'*. No further action is required.



*Water drain without membrane*

### Reworking foot garages

- Work Procedure: 1 Remove high-voltage battery. ⇒ *Workshop Manual '270819 Removing and installing high-voltage battery'*
- 2 Seal foot garages ⇒ *Foot garages -1-*.



*Foot garages*

- 2.1 Thoroughly clean connection points of the foot garages ⇒ *Foot garages -2-*.
  - 2.2 Apply sealant to the connection points of the foot garages ⇒ *Foot garages -2-* and spread evenly.
  - 2.3 Check sealed connection points of the foot garages ⇒ *Foot garages -2-* again, repair them if necessary and allow to dry according to manufacturer's specifications.
- 3 Install high-voltage battery. ⇒ *Workshop Manual '270819 Removing and installing high-voltage battery'*

## Invoicing

For documentation and warranty invoicing, enter the labor operations, parts and PQIS coding specified below in the warranty claim:

| APOS     | Labor operation           | I No. |
|----------|---------------------------|-------|
| 51934900 | Reworking center cover    |       |
| 51904990 | Reworking underbody cover |       |

PQIS coding:

|                          |       |              |
|--------------------------|-------|--------------|
| <b>Location (FES5)</b>   | 51930 | Center cover |
| <b>Damage type (SA4)</b> | 1631  | blocked      |

Parts Info: **Required materials as required**

| <b>Part No.</b> | <b>Designation</b> | <b>Qty.</b>           |
|-----------------|--------------------|-----------------------|
| 00004330532     | Sealing compound   | 1 ea.                 |
| 00004330516     | Coolant additive   | 0.5 liter/ 16.9 fl oz |

References:   ⇒ *Workshop Manual '4X00IN Lifting the vehicle'*  
                  ⇒ *Workshop Manual '270819 Removing and installing high-voltage battery'*

**Important Notice:** Technical Bulletins issued by Porsche Cars North America, Inc. are intended only for use by professional automotive technicians who have attended Porsche service training courses. They are written to inform those technicians of conditions that may occur on some Porsche vehicles, or to provide information that could assist in the proper servicing of a vehicle. Porsche special tools may be necessary in order to perform certain operations identified in these bulletins. Use of tools and procedures other than those Porsche recommends in these bulletins may be detrimental to the safe operation of your vehicle, and may endanger the people working on it. Properly trained Porsche technicians have the equipment, tools, safety instructions, and know-how to do the job properly and safely. Part numbers listed in these bulletins are for reference only. The work procedures updated electronically in the Porsche PIWIS diagnostic and testing device take precedence and, in the event of a discrepancy, the work procedures in the PIWIS Tester are the ones that must be followed.

© 2021 Porsche Cars North America, Inc.