



Service Bulletin

Bulletin No.: 21-NA-032

Date: April, 2021

TECHNICAL

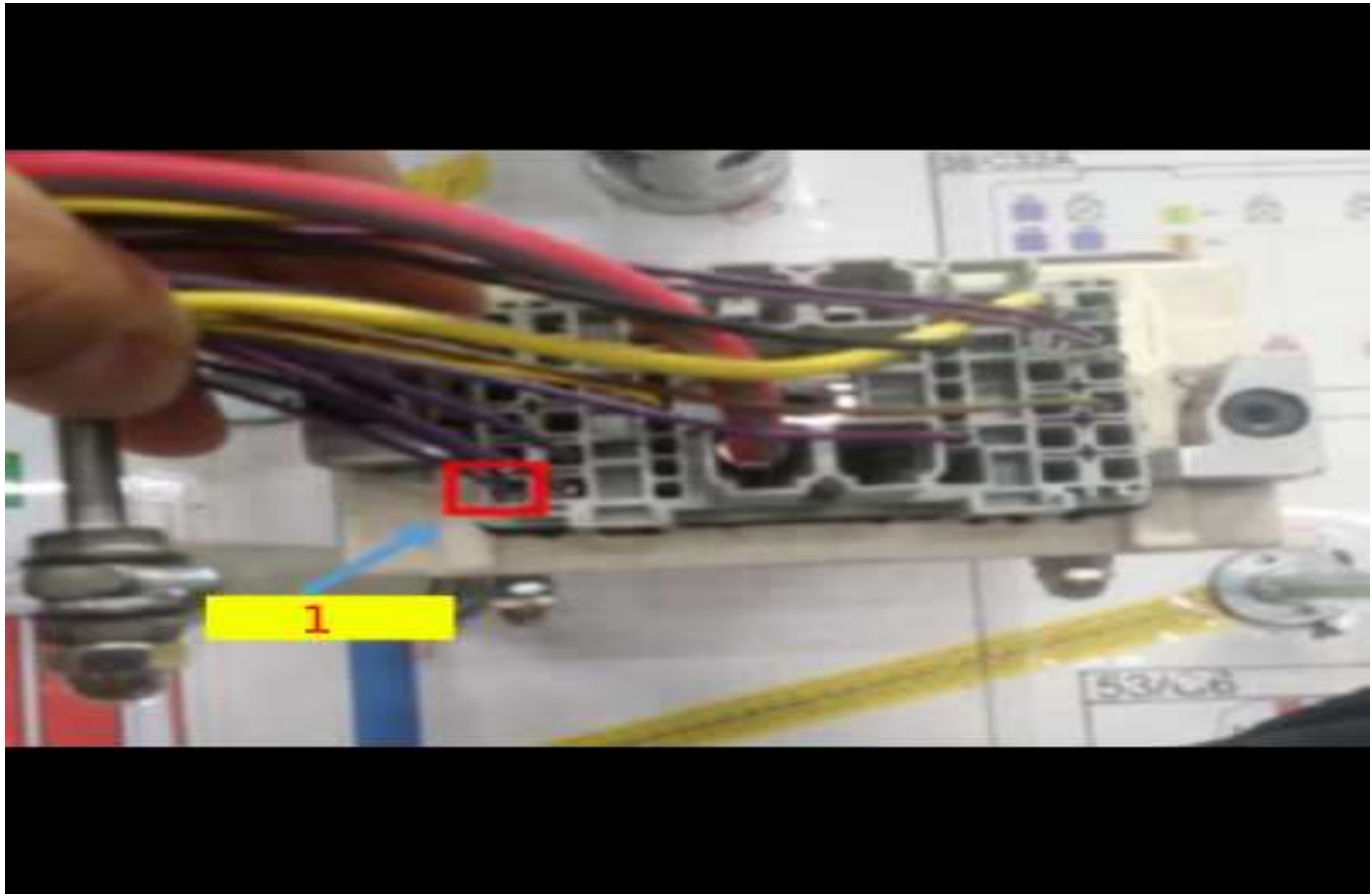
Subject: DTC P0101 Mass Air Flow (MAF) Sensor Performance, P1682 Set after MAF Replacement

Brand:	Model:	Model Year:		VIN:		Engine:	Transmission:
		from	to	from	to		
Chevrolet	Silverado 1500 (New Model)	2019	2019			5.3L RPO (L82, L84)	
	Silverado 1500	2020	2021			6.2L RPO (L87)	
GMC	Sierra 1500 (New Model)	2019	2019			5.3L RPO (L82, L84)	
	Sierra 1500	2020	2021			6.2L RPO (L87)	

Involved Region or Country	United States, Canada, Mexico, Middle East, Chile, Paraguay, Uruguay, Thailand, Australia/New Zealand
Additional Options (RPOs)	
Condition	<p>Some customers may comment that the SES (Service Engine Soon) lamp is illuminated or was illuminated and turned off.</p> <p>During inspection Technician may find DTC P1682 (Ignition 1 Switch Circuit 2) active or stored in history. DTC's P0101, P0689, P16A7 or P16BC may also be active or stored in history. Additionally, vehicle may have been into the dealer on a prior service visit and had the MAF sensor replaced for DTC P0101.</p>
Cause	<p>The cause of the condition may be a compromised connection within the UBEC (Underhood Bussed Electrical Center) connector X3 at position H6 has been observed that can result in P1682 and P0101 codes setting together.</p>
Correction	<p>If you encounter a vehicle with the above DTC's DO NOT replace the MAF sensor. It will be necessary to inspect the wire to terminal connections inside the X3 connector at the UBEC assembly. Inspect the wire for signs of marginal connection or loose wires (see pictures below). Specifically inspect the dual crimp at location X3-H6.</p> <p>If this condition is observed repair the wire connection in accordance with standard practices. If no trouble is found further diagnosis will be necessary for the applicable DTCs before replacing the MAF sensor. Refer to service information for further diagnosis.</p>

Service Procedure

1. Locate the X50A Fuse Block- Underhood X3 Connector



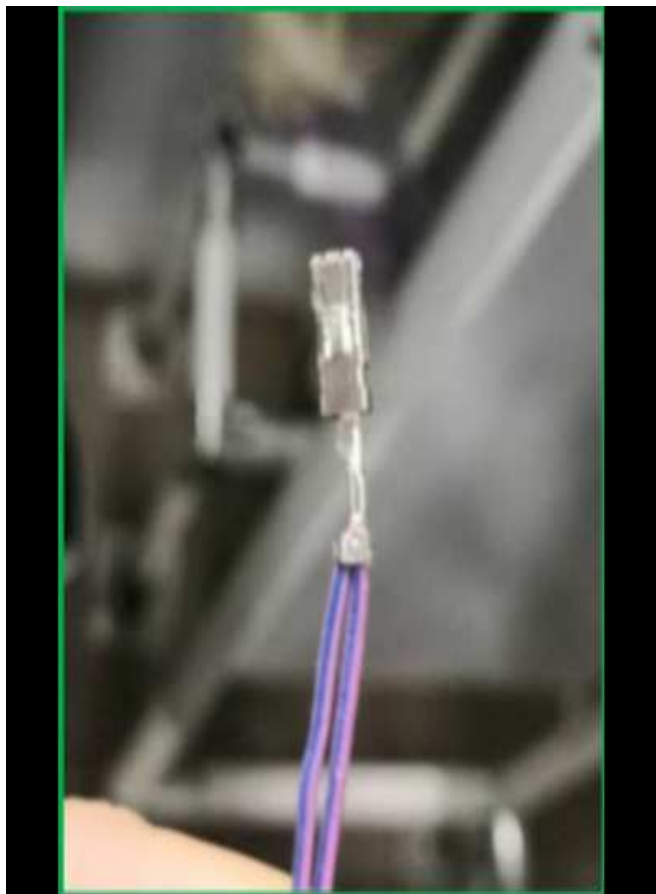
5735855

2. Locate the dual-crimp wire in the H6 pin (1).
3. Verify the dual crimp wire at the H6 pin



5735789

- If the dual crimp is like the example above, repair the wire. Refer to *Repairing Connector Terminals (Terminal Repair)* in SI.



5735787

- If the dual crimp is like the example above, refer to SI for further diagnosis.

Parts Information

Causal Part	Description	Part Number	Qty
X	Under hood Electrical Center Connector X3 cavity H6	19332366	1

Warranty Information

For vehicles repaired under warranty, use:

Labor Operation	Description	Labor Time
5430922	Connector Reconnection	Use Published Labor Operation Time

Version	2
Modified	Released March 08, 2021 Revised March 29, 2021 - Removed the second part number for the Parts Information section.