



Service Bulletin

Bulletin No.: 20-NA-197

Date: March, 2021

TECHNICAL

Subject: Malfunction Indicator Lamp (MIL) Illuminated - DTC P0087, P0089, P0191, P026D, P1089, P163A, P163B, P2293, P228A, P228B, P228C, and/or P228D Set

Brand:	Model:	Model Year:		VIN:		Engine:	Transmission:
		from	to	from	to		
Chevrolet	Express	2017	2021			LWN	
	Silverado	2017	2018			L5P	
	Silverado 2500HD/ 3500HD	2019	2021			L5D	
	Silverado 4500HD, 5500HD and 6500HD	2019	2021			LWN	
GMC	Canyon	2016	2021			LWN	
	Savana	2017	2021			LWN	
	Sierra	2017	2018			L5P	
	Sierra 2500HD/ 3500HD	2019	2021				

Involved Region or Country	North America, Middle East, Israel, Palestine
Condition	<p>Some customers may comment that the MIL is illuminated. Some technicians may find one or more of the following DTCs set in the Engine Control Module (ECM):</p> <ul style="list-style-type: none"> • P0087: Fuel Rail Low Pressure • P0089: Fuel Pressure Regulator 1 Performance • P0191: Fuel Rail Pressure Sensor 1 Performance • P026D: Injection Quantity Too High • P1089: Fuel Rail Pressure Performance During Deceleration Fuel Cut-Off • P163A: Control Module Fuel Pressure Regulator 1 Control System Circuitry Performance • P163B: Control Module Fuel Pressure Regulator 2 Control System Circuitry Performance • P2293: Fuel Pressure Regulator 2 Performance • P228A: Fuel Pressure Regulator 1 Control - Forced Engine Shutdown • P228B: Fuel Pressure Regulator 2 Control - Forced Engine Shutdown • P228C: Fuel Pressure Regulator 1 Control Performance - Low Pressure • P228D: Fuel Pressure Regulator 1 Control Performance - High Pressure
Cause	This condition may be caused by corrosion or damaged at the fuel pressure sensor electrical connector.



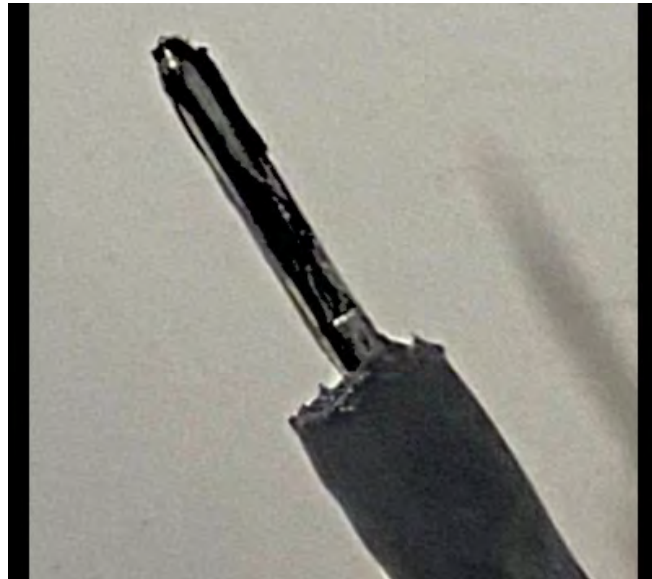
5652222

Inspect the fuel pressure sensor electrical connector for corrosion or damage.

⇒ It may be necessary to use a generous enough amount of dielectric grease in the connector to reach the entire terminal and use J-35616-16 (LT GN) terminal test tool and drag the tool up to 10 times to find/identify corrosion or fretting.

Correction

Note: When making the final connection of this electric connector to the sensor, please apply dielectric grease prior to installation.



5652223

- If you see a suspect terminal, it may be necessary to removal said terminal and inspect for corrosion, damage and/or signs of the dielectric grease starting to turn black.
- If any of the conditions have been found, replace the electrical connector.

Service Procedure

Refer to *Connector Repairs* in SI.

Parts Information

Causal Part	Description	Part Number	Qty
N/A	CONNECTOR, WRG HARN	19367009	1
N/A	ACDelco Dielectric Lubricant*	12377900 (U.S.) 10953529 (Canada)	1
*There is enough material to do additional vehicles. Store the remaining material for future use.			

Warranty Information

For vehicles repaired under the Bumper-to-Bumper coverage (Canada Base Warranty coverage), use the following labor operation. Reference the Applicable Warranties section of Investigate Vehicle History (IVH) for coverage information.

Labor Operation	Description	Labor Time
5480878*	Fuel Rail Fuel Pressure Sensor Connector Replacement	0.9 hr
*This is a unique Labor Operation for Bulletin use only.		

Version	
	3
Modified	Released September 23, 2020 Revised November 16, 2020 - Added Unique Labor Operation Number to Warranty Information section and 2021 Model Year for 2500/3500HD and 4500/5500/6500HD. Revised March 04, 2021 - Removed P026C Information and Added Additional Vehicle Models.

