



SIB 63 03 18 LED LIGHT CARPET IS DIM OR DISTORTED

2021-03-15

This Service Information Bulletin (Revision 2) replaces SI B63 03 18 dated **February 2019**.

What's New (Specific text highlighted):

- Model
- Warranty information removed

MODEL

G01 (X3 Sports Activity Vehicle)	G02 (X4 Sports Activity Coupe)	G05 (X5 Sports Activity Vehicle)	G06 (X6 Sports Activity Coupe)
G07 (X7 Sports Activity Vehicle)	G12 (7 Series Sedan)	G20 (3 Series Sedan)	G22 (4 Series Coupe)
G23 (4 Series Convertible)	G32 (640i xDrive Gran Turismo)		

SITUATION

The light carpet may appear dim or distorted on one or both sides.



GRUSB6318-05

CAUSE

The light carpet LED lens may be blocked by debris.

CORRECTION

Clean the lens of the light carpet module. Replace the light carpet module only if the lens cannot be sufficiently cleaned.

PROCEDURE



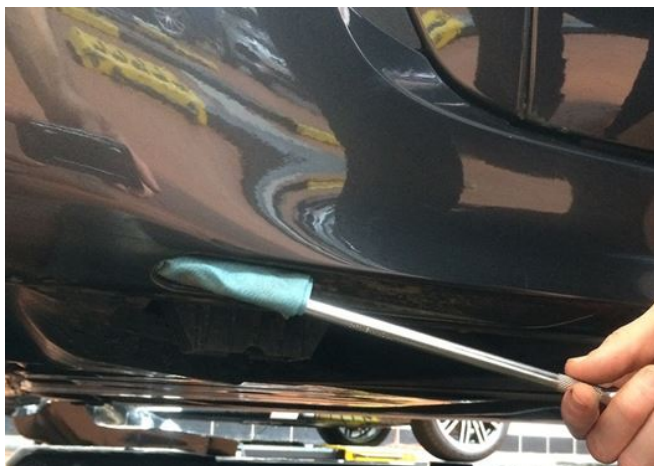
GRUSB6318-02

1. Using a flashlight, inspect the lens of the light carpet module from underneath the vehicle.

Is the lens covered by debris?

Yes: Proceed to step 2.

No: Continue troubleshooting, this SI B does not apply.



2. Attempt to clean the debris from the lens using a wet lint free cloth and low pressure water hose or spray bottle.

Note: Ensure the light carpet module and lens are not damaged during cleaning. If the lens cannot be cleaned without excessive force, the light carpet module should be replaced. Wrapping a wet cloth around a 1/4" socket extension can aid in reaching the lens with the cloth.

Can the light carpet module lens be cleaned?

Yes: No further repairs are required.

No: Continue to step 3.

3. If cleaning is not successful, the affected light carpet module needs to be replaced. Following repair instructions REP 63 14 300 "Remove and install the LED module for the light carpet on the left", replace one or both light carpet modules as needed.

4. After replacement, adjust the light carpet module as outlined in the repair instructions and ensure light output is the same on both sides.

PARTS INFORMATION

Obtain and confirm the part numbers for your specific vehicle by entering the chassis number in either ETK or AIR which takes into account specific equipment and/or options.

Parts are only required if the affected lens cannot be cleaned

Part Number	Description	Quantity
Refer to ETK	Light module, light carpet, left	1

And/or:		
Refer to ETK	Light module, light carpet, right	1

WARRANTY INFORMATION

Repairs outlined in this bulletin, as a result of road dirt/debris, are not covered under warranty.

QUESTIONS REGARDING THIS BULLETIN

Technical inquiries	Submit feedback at the top of this bulletin
Warranty inquiries	Submit an IDS ticket to the Warranty Department or use the chat available in the Warranty Documentation Portal
Parts inquiries	Submit an IDS ticket to the Parts Department