



GROUP
ELE

MODEL
2022MY
Carnival (KA4)

NUMBER
237

DATE
April 2021

TECHNICAL SERVICE BULLETIN

SUBJECT:

**SERVICE ACTION: AC INVERTER
OUTLET REPLACEMENT (SA472)**

This bulletin provides the procedure to replace the two (2) AC Inverter Outlets (console and luggage areas) on some 2022MY Carnival (KA4) vehicles produced from January 4, 2021 through March 18, 2021, which may exhibit poor operation or failure of the AC Inverter Outlets. To correct this concern, follow the procedure outlined in this bulletin to replace both console and luggage outlets with new improved parts. Before conducting the procedure, verify that the vehicle is included in the list of affected VINs.

AC Inverter Outlets



Front Console Outlet



Luggage Area Outlet

★ NOTICE

A Service Action is a repair program without customer notification that is performed during the warranty period. Any dealer requesting to perform this repair outside the warranty period will require DPSM approval.

Repair status for a VIN is provided on WebDCS (Service → Warranty Coverage → Warranty Coverage Inquiry → Campaign Information). Not completed Recall / Service Action reports are available on WebDCS (Consumer Affairs → Not Completed Recall → Recall VIN → Select Report), which includes a list of affected vehicles.

This issue number is SA472.

Printed TSB copy is for reference only; information may be updated at any time.
Always refer to KGIS for the latest information.

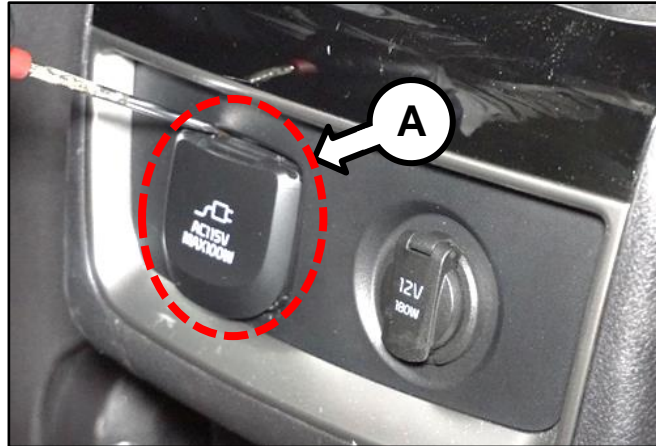
Circulate To: General Manager Service Manager Parts Manager
 Service Advisors Technicians Body Shop Manager Fleet Repair

Console AC Inverter Outlet Replacement Procedure:

1. Disconnect the battery negative (-) terminal.
2. Remove the AC Inverter Outlet (A) on the front console using a flat-head screwdriver or similar tool, as shown.

⚠ CAUTION

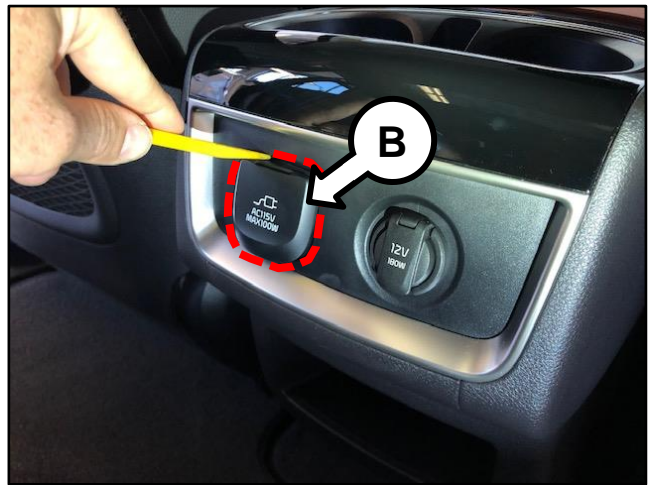
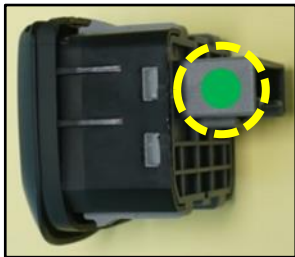
Do Not use a sharp/metal tool as damage to the surface of the interior trim may occur. Instead, use a non-marring trim tool.



3. Disconnect the AC inverter outlet connector (B) shown to remove the outlet.
- 4a. Install the new Console AC Inverter Outlet in the reverse order of removal.

ⓘ IMPORTANT

Install the correct part with **Green** sticker **'without'** the letter "V" marking.



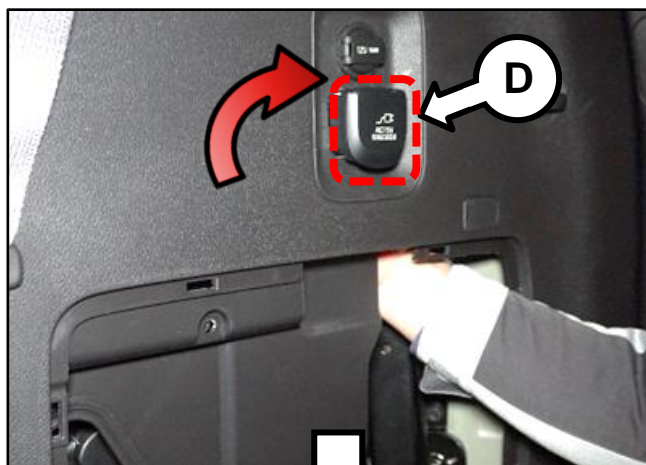
- 4b. Proceed to step 5 to replace the Luggage Outlet.

SUBJECT: SERVICE ACTION: AC INVERTER OUTLET REPLACEMENT (SA472)
Luggage AC Inverter Outlet Replacement Procedure:

5. Remove the luggage side trim fire extinguisher cover (C).



6. Reach inside with hand and feel the top of the luggage area AC Inverter Outlet (D).

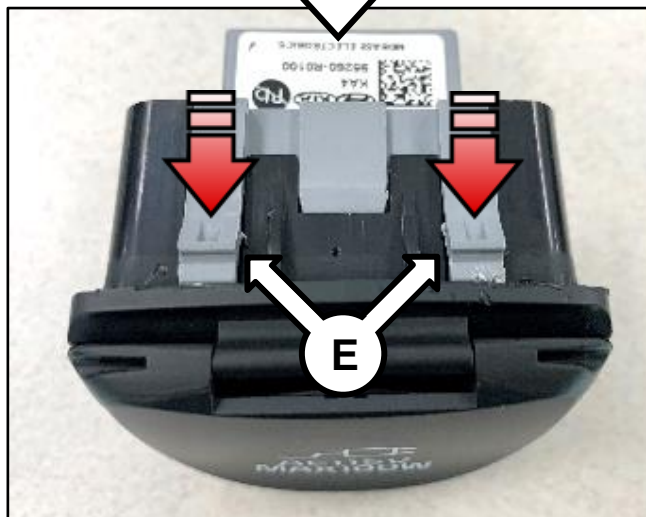


7. Push the top tabs (E) on the AC Inverter Outlet to release the outlet.

Refer to the “Body Electrical System → AC Inverter System → AC Inverter Outlet → Removal and Installation” chapter in the applicable Shop Manual on KGIS.


CAUTION

Carefully remove the luggage outlet. **Do Not** use a sharp/metal tool as damage to the surface of the interior trim may occur.

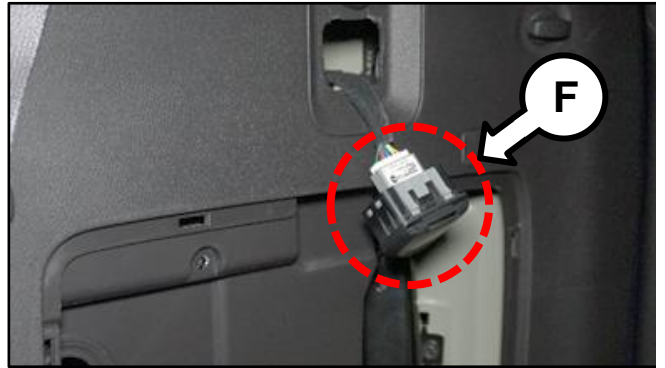


SUBJECT: SERVICE ACTION: AC INVERTER OUTLET REPLACEMENT (SA472)

- 8. Once released, push out the AC Inverter Outlet by hand from the inside of the trim as shown and remove the outlet.




- 9. Disconnect the luggage area AC Inverter Outlet connector (F) and remove the outlet.



- 10. Install the new Luggage AC Inverter Outlet in reverse order of removal.

ⓘ IMPORTANT

Install the correct part with **Green** sticker 'with' the letter "V" marking.



- 11. Confirm normal operation of the AC inverter outlets by plugging in/charging a cellular phone or equivalent device to the outlet.





SUBJECT: SERVICE ACTION: AC INVERTER OUTLET REPLACEMENT (SA472)

AFFECTED VEHICLE RANGE:

Model	Production Date Range
Carnival (KA4)	January 4, 2021_to March 18, 2021

REQUIRED PART:

Part Name	Part Number	Figure	Qty.
Inverter Outlet*	95260 R0100QQK	Console Outlet 	1
		Luggage Outlet 	

***Note:** When ordering the AC Inverter Outlet part number listed above, two (2) outlets will be supplied; one (1) for the front console, one (1) for the luggage area. **Be sure to use the part marked with a “V” with the green sticker for Luggage Outlet.**

WARRANTY INFORMATION:

N Code: N99 C Code: C99

Claim Type	Causal P/N	Qty.	Repair Description	Labor Op Code	Op Time	Replacement P/N	Qty.
V	95260 R0100	0	(SA472) Console & Luggage Inverter Outlet Replacement	210050R0	0.3 M/H	95260 R0100QQK	1

*** NOTICE**

VIN inquiry data for this repair is provided for tracking purposes only. Kia retailers should reference SA472 when accessing the WebDCS system.

