



GROUP  
ELE

MODEL  
2020-2021MY  
Telluride (ON)

NUMBER  
231

DATE  
April 2021

## TECHNICAL SERVICE BULLETIN

SUBJECT:

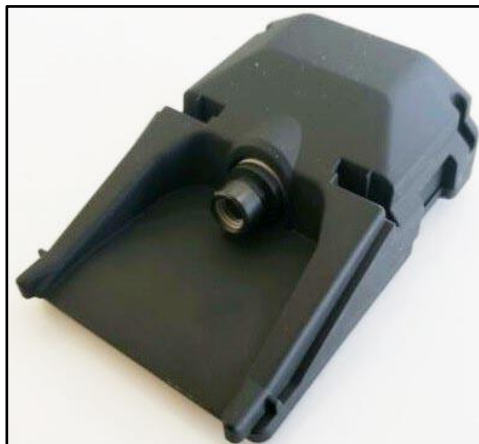
**FRONT VIEW CAMERA REPLACEMENT  
FOR DTC C160449 & C160649**

This bulletin provides information on the inspection and replacement of the front camera on some 2020-2021MY Telluride (ON) vehicles, produced from August 7, 2018 through November 30, 2020. Due to an internal control chip concern inside the camera, the vehicle may exhibit an MIL on with DTC C160449 and/or C160649, as well as illumination of the Smart Cruise Control (SCC), Lane Keep Assistance (LKA), Lane Departure Warning (LDW), Forward Collision-Avoidance Assist (FCA), Forward Collision Warning (FCW) and/or Driver Attention Warning (DAW) lights. These systems may become temporarily disabled during occurrences. Follow the procedure outlined in this publication to diagnose and replace the front view camera assembly.

### DTC Description:

**C160449 – Hardware Concern**

**C160649 – Software Concern**



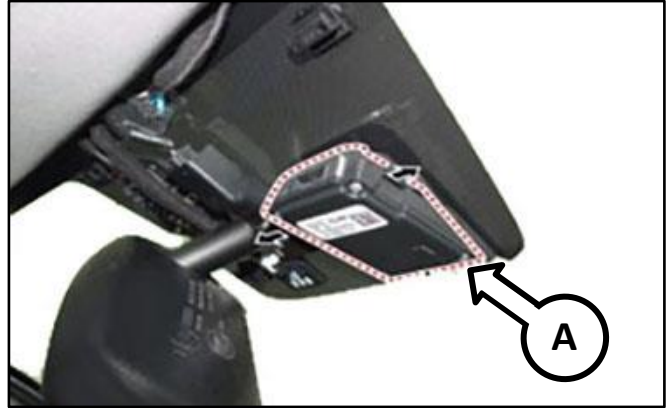
Front View Camera

Printed TSB copy is for reference only; information may be updated at any time.  
Always refer to KGIS for the latest information.

Circulate To:  General Manager  Service Manager  Parts Manager  
 Service Advisors  Technicians  Body Shop Manager  Fleet Repair

**Replacement Procedure:**

- 1a. Remove and replace the Front View Camera (A) by referring to the “Body Electrical System → Front Camera System → Front View Camera Unit → Repair Procedures” chapter in the applicable Shop Manual on KGIS.



- 1b. Confirm the lot numbers of the new units as shown. Manufacturing date code is “YYMMDD”.

- **Telluride (ON):** Improved Lot is from June 7, 2019 and later.

Example shown:

Lot No. 200122 = Mfg. date 2020-01-22 (January 22, 2020)

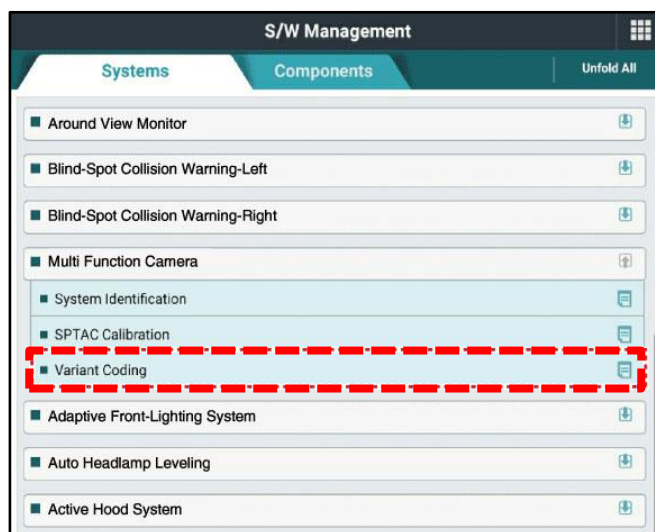


## SUBJECT: FRONT VIEW CAMERA REPLACEMENT FOR C160449 &amp; C160649

2. Perform the “Variant Coding” procedure by referring to the “Body Electrical System → Front Camera System → Repair Procedures” chapter in the applicable Shop Manual on KGIS.

**ⓘ IMPORTANT**

After replacing the front camera with a new unit, the Variant Coding procedure must be performed.




3. Perform the Calibration procedure by referring to the “Body Electrical System → Front Camera System → Repair Procedures” chapter in the applicable Shop Manual on KGIS.
4. Connect vehicle to KDS and check for DTCs.

**SUBJECT: FRONT VIEW CAMERA REPLACEMENT FOR C160449 & C160649****AFFECTED VEHICLE RANGE:**

Model	Production Date Range
Telluride (ON)	August 7, 2018 through November 30, 2020

**REQUIRED PART:**

Part Name	Part Number		Figure	Qty.
	Old	New		
Front View Camera Unit	99211 S9100	99211 S9100FFF		1

**Note:** All parts and service references provided in this bulletin are subject to change. Always check with your local Mobis for the latest information.

**WARRANTY INFORMATION:****N Code: I3A C Code: ZZ3**

Claim Type	Causal P/N	Qty.	Repair Description	Labor Op Code	Op Time	Replacement P/N	Qty.
W	Refer to EPC (Front View Camera)	0	R&R Front Camera Assy	95985F02	0.8 M/H	99211 S9100FFF	1

**Note:** Op time includes diagnostic tool operation & part's calibration after the part's replacement. Always use the correct causal part when submitting the warranty claim.