

Classification: AN14-017B	Reference: ITB14-017B	Date: March 17, 2021
------------------------------	--------------------------	-------------------------

2014 – 2015 Q50; CONFIGURING INFINITI INTOUCH SYSTEM

This bulletin has been amended. See AMENDMENT HISTORY on the last page.
Please discard previous versions of this bulletin.

APPLIED VEHICLE 2014 - 2015 Q50 (V37)
 2014 - 2015 Q50 Hybrid (V37)

SERVICE INFORMATION

MULTI A/V Configuration using CONSULT-III plus (C-III plus)

There are many configurations of the Infiniti InTouch system. Typically, if the MULTI A/V is not configured properly on a navigation equipped vehicle, you will see a clock with no hands on the upper display. If in a situation where the MULTI A/V needs to be manually configured, here are some tips in selecting the correct configuration:

- Navigation:
 Is there is a **MAP** button on the Infiniti Controller (Figure 1)?
 - Yes, select **WITH**
 - No, select **WITHOUT**

- Lane Departure Prevention:
 Is it there is a Blind Spot Warning Light on the A-Pillar?
 - Yes, select **ON**.
 - No, select **OFF**

- Hybrid:
 - Select **OFF** for Conventional Engine.
 - Select **FR TYPE** for 2WD Hybrid
 - Select **FR TYPE 4WD** for 4WD Hybrid

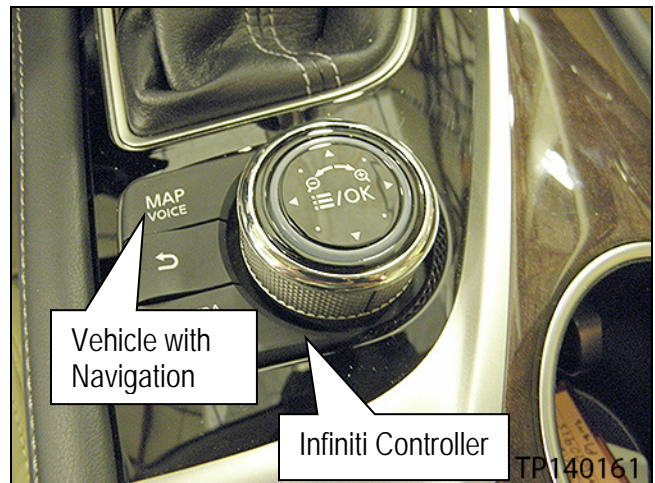


Figure 1

Infiniti Bulletins are intended for use by qualified technicians, not 'do-it-yourselfers'. Qualified technicians are properly trained individuals who have the equipment, tools, safety instruction, and know-how to do a job properly and safely. NOTE: If you believe that a described condition may apply to a particular vehicle, DO NOT assume that it does. See your Infiniti retailer to determine if this applies to your vehicle.

- Camera System:

- Select **REAR** if the vehicle only has rear camera only.
- Select **NONE/AVM ph3** if the vehicle has Around View Monitor (Check for cameras underneath side door mirrors Figure 2).

- Predictive Course Line:

Does the vehicle have Around View Monitor (AVM)?

- Yes, select **WITHOUT/WITH AVM**.
- No:
 - Select **WITH (RVM WITH DAST)** for vehicles equipped with Direct Adaptive Steering.
- Or
 - Select **WITH (RVM WITHOUT DAST)** for vehicles without Direct Adaptive Steering.

- Sonar Type:

Does the vehicle have sonar sensors on the front and rear bumpers (Figure 3)?

- Yes, select **FRONT&REAR**.
- No, select **NONE**.

- Audio Amp Type:

Does the vehicle have a Bose Audio system (Figure 4)?

NOTE: You can find the BOSE emblem on the left and right sides of the dash at the windshield

- Yes, Select 2ch **AMP**.
- No, Select **160W AMP**.

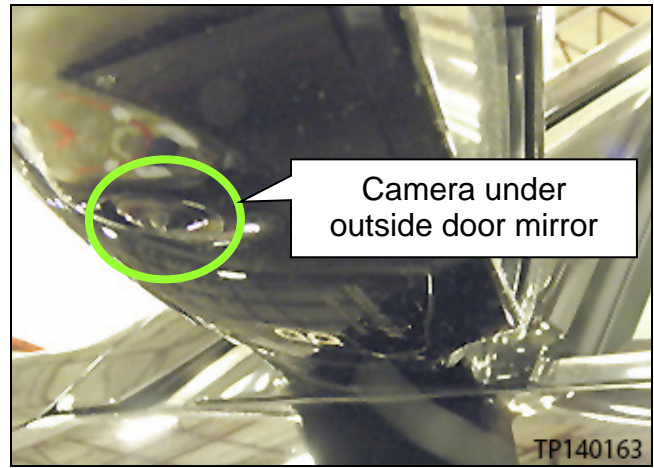


Figure 2

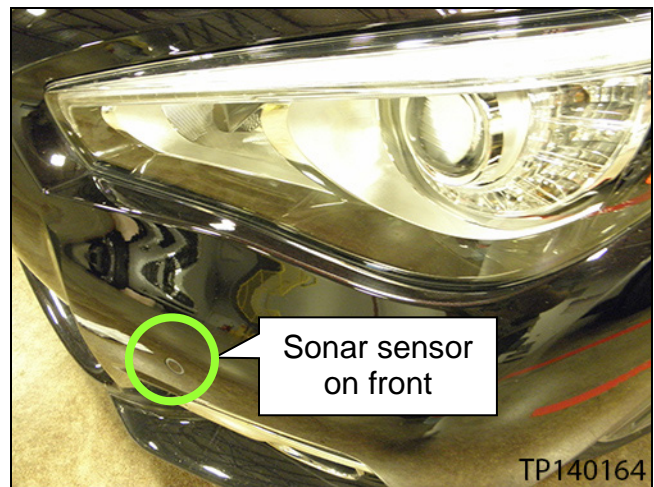


Figure 3



Figure 4

Configuration Procedure is as Follows:

1. Inspect the vehicle being worked on for its options listed above and on page 1.
2. Connect the plus VI to the vehicle.
3. Connect the AC adapter to the CONSULT PC.
4. Turn on the CONSULT PC, and then open C-III plus.
5. Press the vehicle's power ("ignition") switch twice without depressing the brake pedal.

- The meter and gauges will illuminate.

CAUTION: Do Not start the vehicle.

NOTE: Make sure all accessories are turned off.

6. After the plus VI is recognized, select **Re/programming, Configuration**.

NOTE: Make sure all applications other than C-III plus are closed.

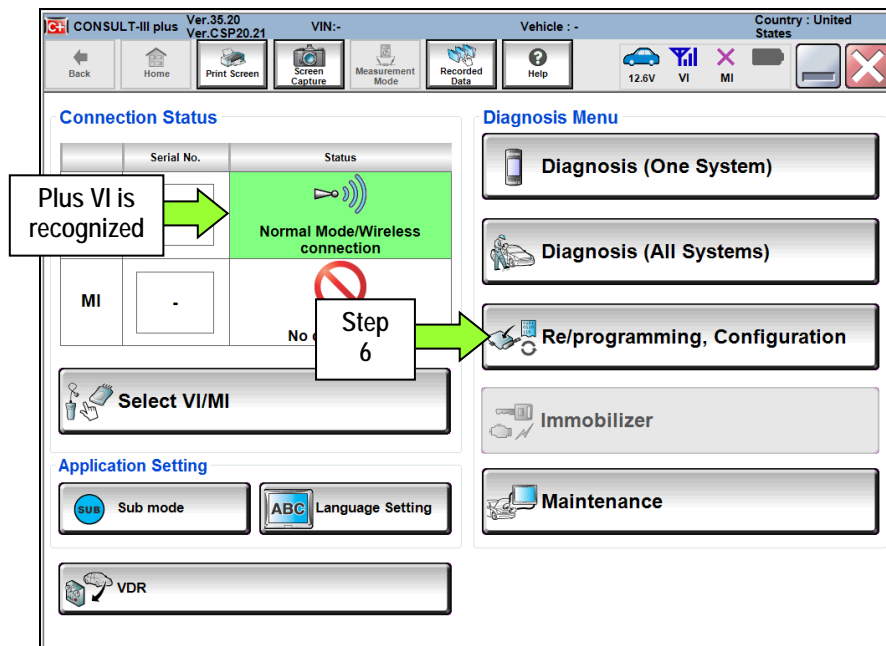


Figure 5

7. Click on the **Confirmed Instructions** box and then select **Next**.

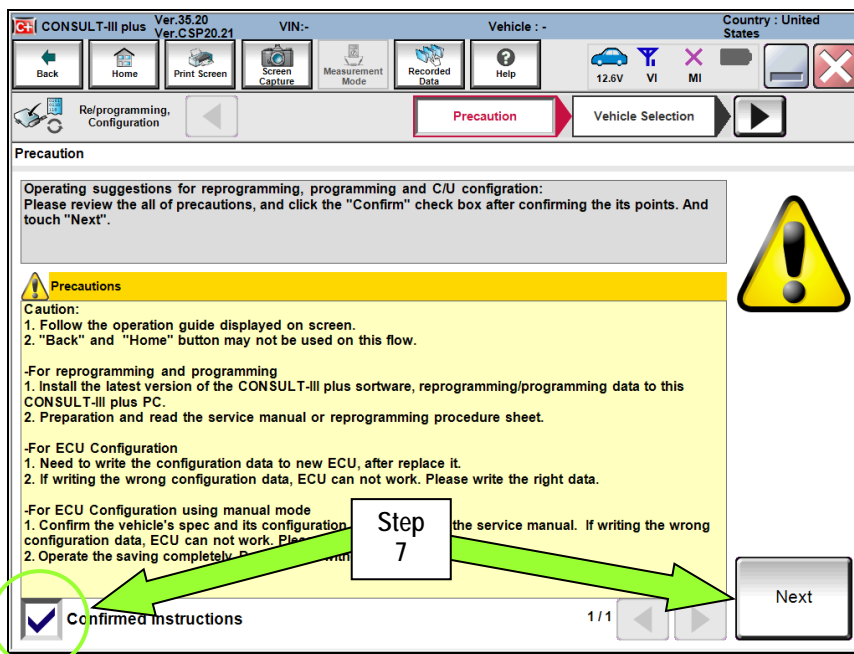


Figure 6

8. Select **INFINITI Q50** and **2014** or **Automatic Selection(VIN)**.

- If **Automatic Selection(VIN)** is selected, wait for the **Reading VIN** screen to complete (picture not shown).

9. Select **Select**.

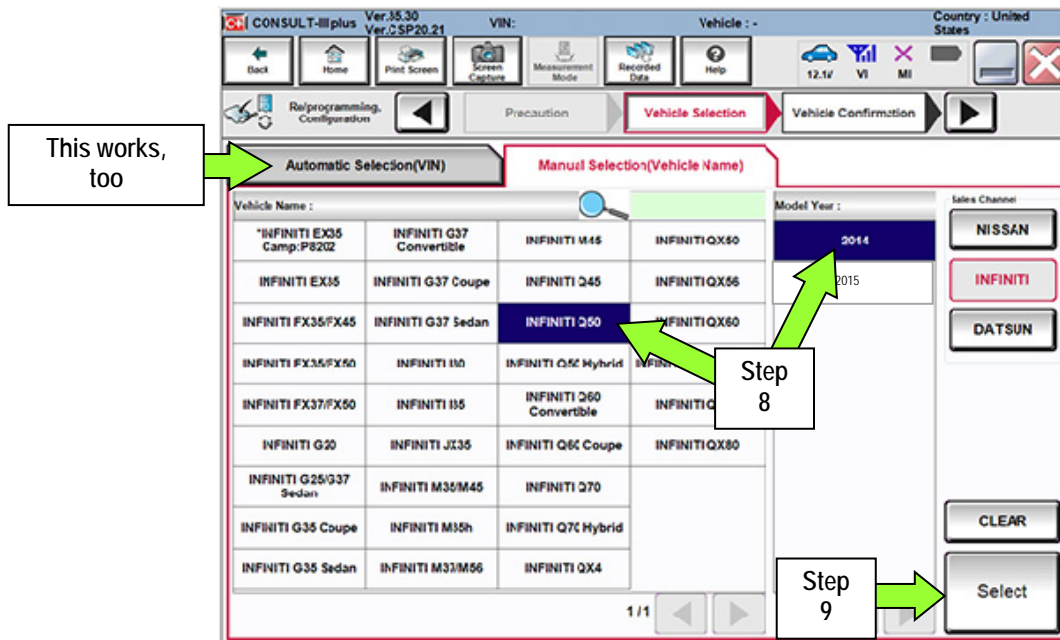


Figure 7

10. Verify the VIN in **VIN or Chassis #** matches that of the vehicle's.
 - If the correct VIN exists, select Confirm.

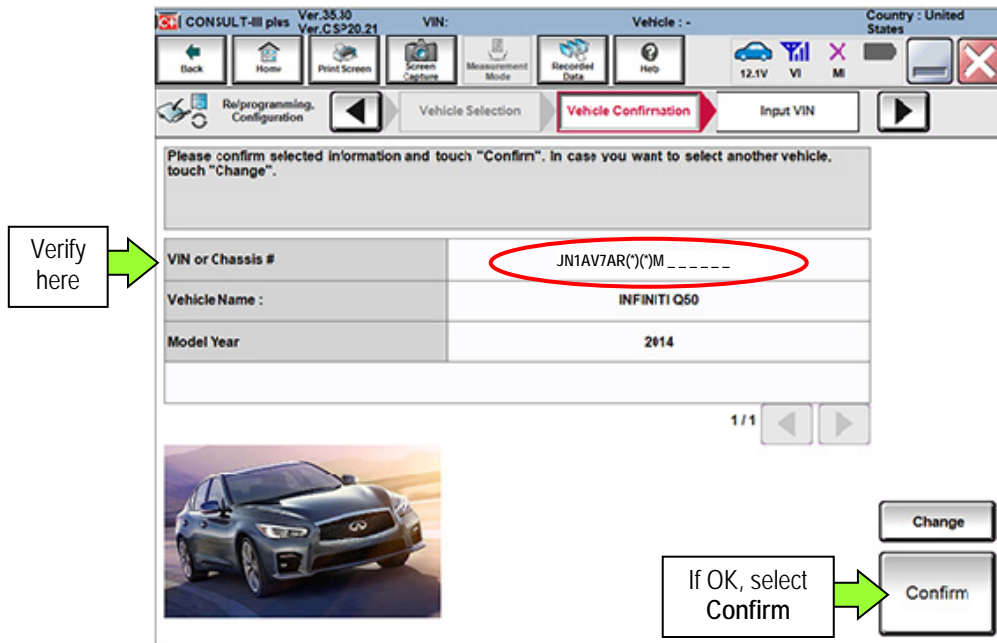


Figure 8

11. On the next screen, select **Confirm**.

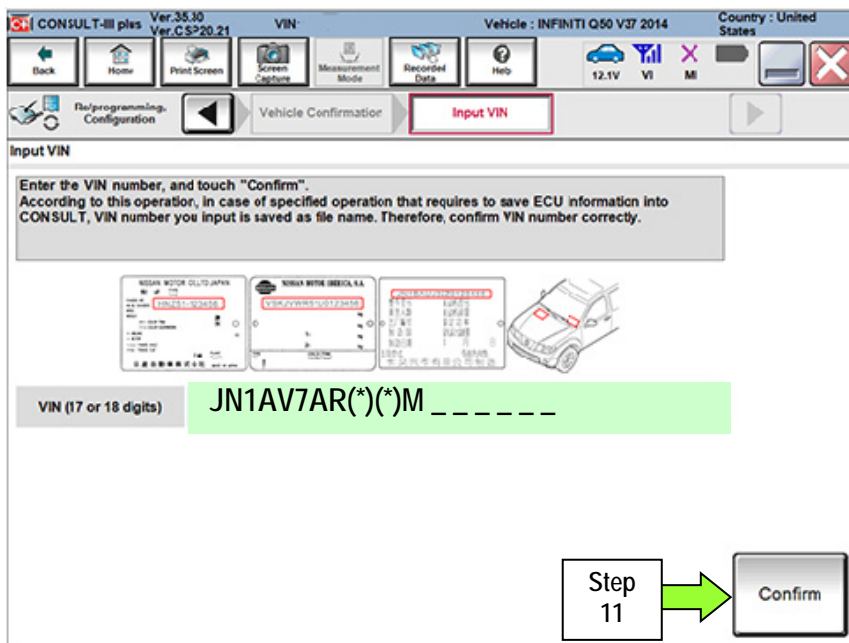


Figure 9

12. Select MULTI AV.

- Wait for system call to complete.

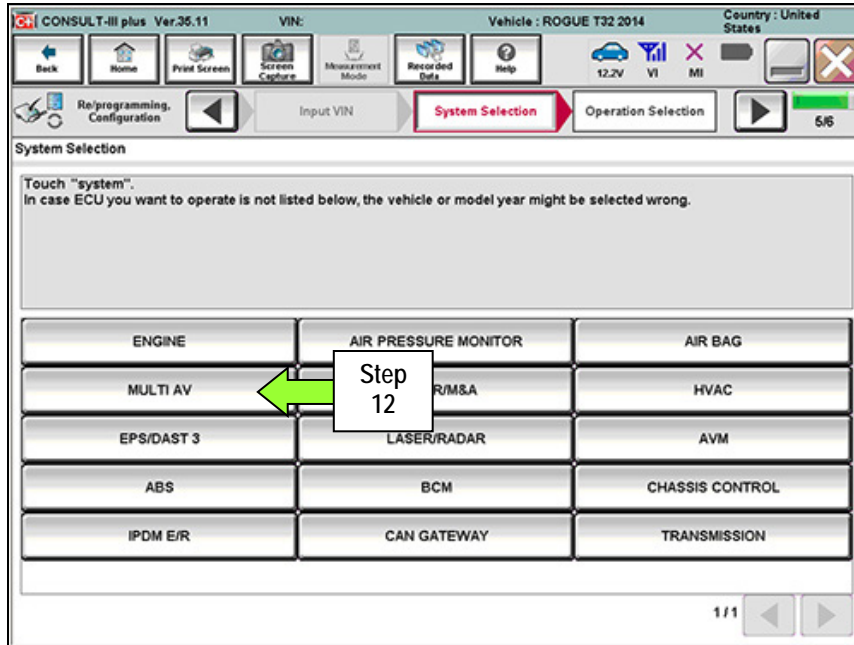


Figure 10

13. Select Manual Configuration.

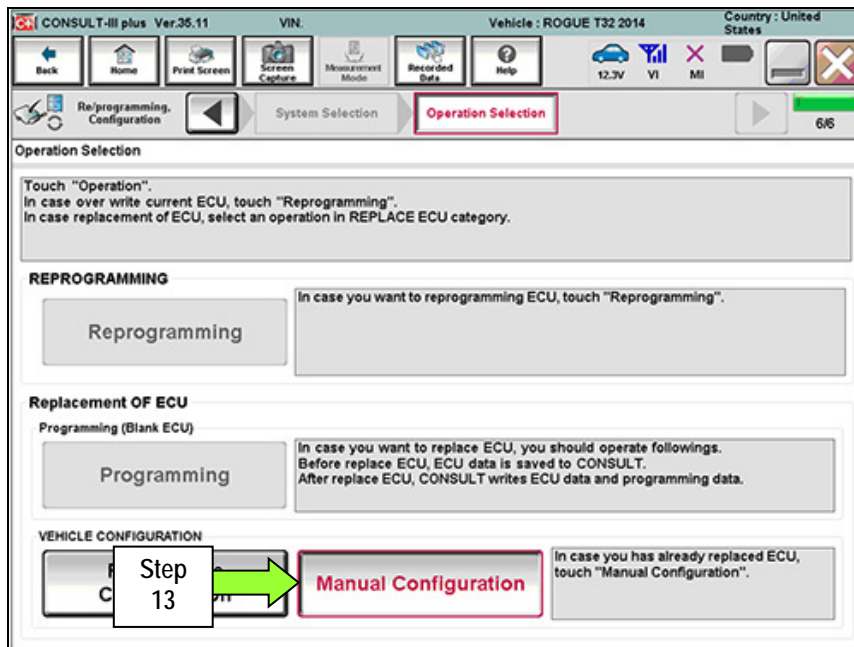


Figure 11

14. Now select the correct vehicle options for the vehicle being configured.

- Turn page to page 2/2 for additional configurable options.

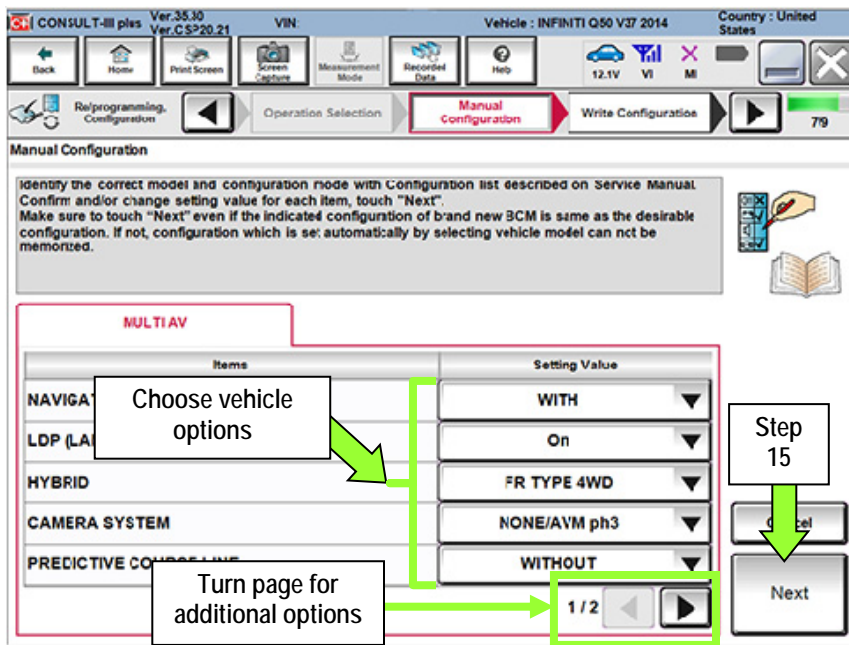


Figure 12

15. Select **Next**.

16. Confirm the vehicle options for the vehicle being configured are correct.

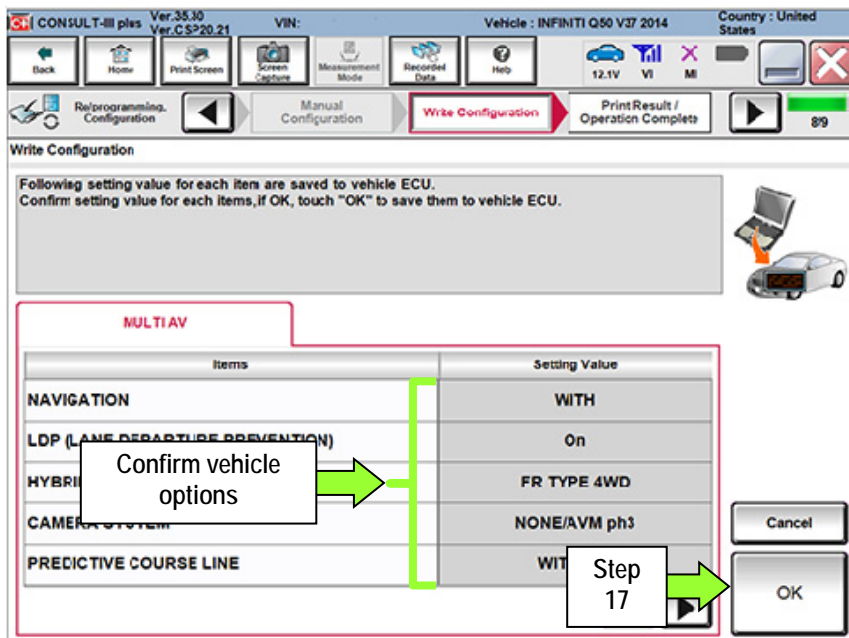


Figure 13

17. Select **OK**.

18. After the data transfer has completed select **End**.

19. Close the CONSULT PC.

AMENDMENT HISTORY

PUBLISHED DATE	REFERENCE	DESCRIPTION
April 17, 2014	ITB14-017	Original bulletin published
January 2, 2015	ITB14-017A	APPLIED VEHICLES updated
March 17, 2021	ITB14-017B	Updated classification number

