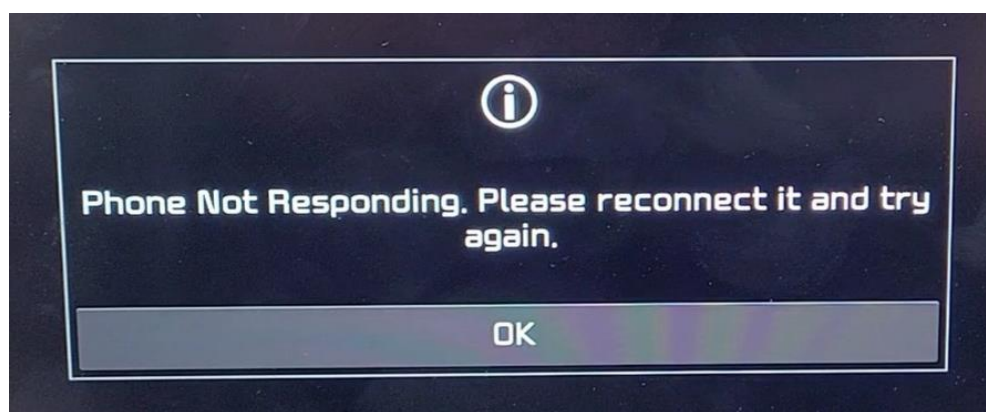
 HYUNDAI Technical Service Bulletin	GROUP Body Electrical	NUMBER 21-BE-004H
	DATE March, 2021	MODEL(S) Various
SUBJECT: WIRELESS CARPLAY DISCONNECTION		

This TSB supersedes TSB# 20-BE-014H to include a note referencing to another TSB.

Description: When using Wireless CarPlay, the system may intermittently auto disconnect. When Wireless CarPlay is disconnected, a pop up message "Phone Not Responding. Please reconnect it and try again" will appear on the radio screen.



NOTE 1: If the intermittent Wireless CarPlay disconnection occurred, do not replace the radio. The disconnection phenomenon is caused by the Apple IOS software. Apple IOS software intermittently pause the data transmission, causing the communication interruption between the radio and CarPlay.

NOTE 2: A software update is available for certain models, refer to TSB 21-BE-002H for more information. The software update helps reduce the disconnection occurrences, until Apple provides a software update to correct the condition.

Applicable Vehicles:

Certain 2020 and Forward Models equipped with display audio with capability of Wireless CarPlay

Warranty Information:

Normal Warranty Applies