 HYUNDAI Technical Service Bulletin	GROUP CAMPAIGN	NUMBER 21-01-016H
	DATE MARCH 2021	MODEL(S) Hyundai Genesis (DH)
SUBJECT: HYUNDAI GENESIS (DH) BRAKE TUBE INSPECTION AND REPLACEMENT (NON-SALT BELT STATES) (SERVICE CAMPAIGN T5X)		

* IMPORTANT	*** Retail Vehicles ***
<p>Dealers must perform this Service Campaign whenever an affected vehicle is in the shop for any maintenance or repair.</p> <p>When a vehicle arrives at the Service Department, access Hyundai Motor America's "Warranty Vehicle Information Screen (VIS)" via WEBDCS to identify open Campaigns.</p>	



Description: This bulletin describes the procedure to inspect and if necessary replace the brake tube assemblies for certain 2015MY Hyundai Genesis (DH) vehicles located in the non-salt belt states. Non-salt belt states are listed below in **Applicable Vehicles**.



Applicable Vehicles:
VERIFY THAT THE VEHICLE IS IDENTIFIED AS AFFECTED BY THE SERVICE CAMPAIGN VIA WEBDCS.

1. **Model:** 2015MY Hyundai Genesis (DH) vehicles.
2. **Production Date Range:** February 21, 2014 – June 30, 2014.
3. **Areas: Non-salt belt states are listed below:**
Alabama, Alaska, Arizona, Arkansas, California, Colorado, Florida, Georgia, Hawaii, Idaho, Kansas, Kentucky, Louisiana, Mississippi, Montana, Nebraska, Nevada, New Mexico, North Carolina, North Dakota, Oklahoma, Oregon, South Carolina, South Dakota, Tennessee, Texas, Utah, Virginia, Washington, Wyoming.

Parts Information:

Part Information	Part Number	Remarks
<p align="center"><u>Brake Tube Assy</u></p> 	<p align="center">58730-B1010-QQH</p>	<p align="center">QQH part number includes all required tube and holder assemblies.</p>
<p align="center"><u>DOT 4 Brake Fluid</u></p> 	<p align="center">00232-19053</p>	<p align="center">Two 12-ounce bottles required per vehicle.</p>

Warranty Information:

Model	Op. Code	Operation	Op. Time	Causal Part	Nature Code	Cause Code
Genesis (DH)	00D082R0	Brake Tube Inspection	0.3 M/H	58730-B1010-QQH	A42	ZZ6
	00D082R1	Brake Tube Inspection & Replacement	6.7 M/H			

NOTE 1: Submit Claim on Campaign Claim Entry Screen

NOTE 2: If a part is found in need of replacement while performing Service Campaign T5X and the affected part is still under warranty, submit a separate claim using the same Repair Order. If the affected part is out of warranty submit a Prior Approval Request for goodwill consideration prior to performing the work.

NOTE 3: Op code 00D082R1 includes 4 wheel alignment and steering angle sensor calibration.

Service Procedure: Brake Tube Inspection

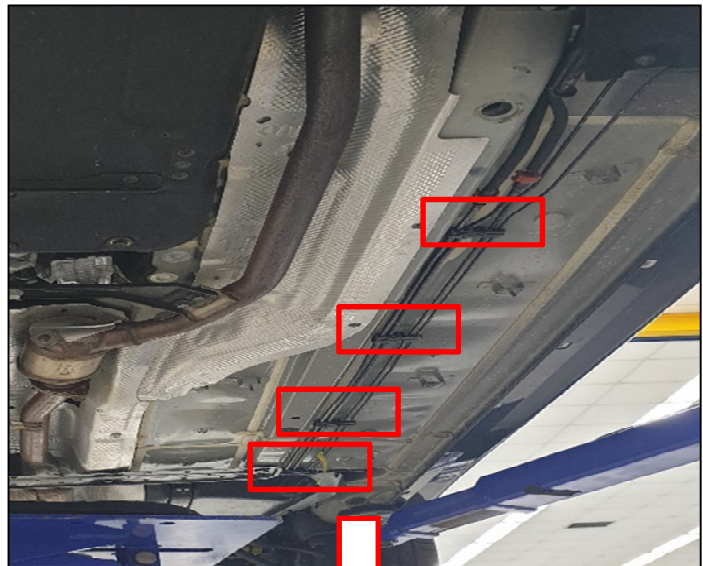
1. Raise the vehicle on a lift.



2. Remove the driver's side under covers to access the brake lines.

Inspect the brakes lines for corrosion, paying close attention to the brake line brackets locations.

- If no corrosion is detected, the service procedure is complete.
- If corrosion is detected, proceed to **Service Procedure: Brake Tube Replacement.**



Service Procedure: Brake Tube Replacement

1. If applicable, record the customer's radio preset stations for AM/FM/XM.

Disconnect the negative battery terminal.

TIGHTENING TORQUE

lb.ft	•2.9 - 4.3
kgf.m	•0.4 - 0.6
N.m	•3.9 - 5.9



2. Lift the vehicle and remove the front left, rear left, and rear right wheels.

TIGHTENING TORQUE

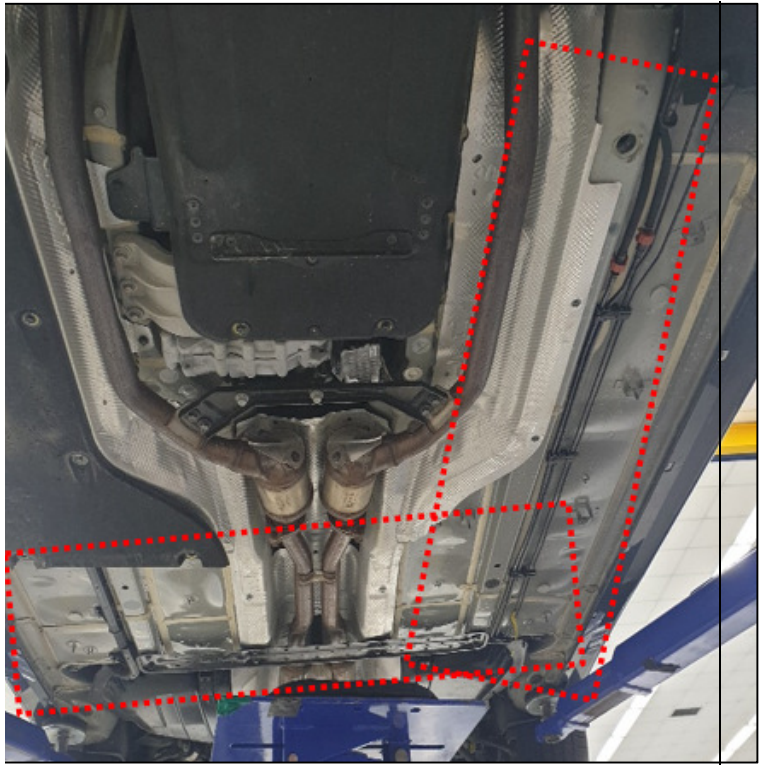
lb.ft	•79.6 - 94.0
kgf.m	•11.0 - 13.0
N.m	•107.9 - 127.5



3. Access the brake lines through the wheel wells by loosening and moving the front left, rear left, and rear right wheel fender liners.



4. Remove the vehicle under covers as shown (front driver's side, and rear left and right covers).



5. Remove the fuel tank and rear cross member assembly by following the service manual procedures listed below:

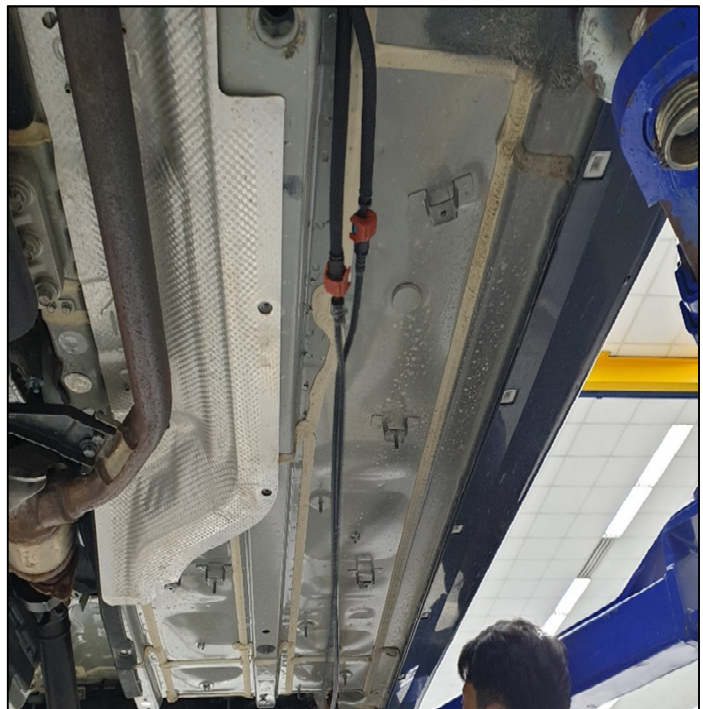
- Engine Control/Fuel System > Fuel Delivery System > Fuel Tank
- Suspension System > Rear Suspension System > Rear Cross Member

6. After removing the fuel tank and rear cross member assembly, remove the brake tubes and the holders from the body.

⚠ CAUTION

Wear safety goggles and gloves to prevent skin or eye contact with brake fluid.

Use a container to catch any remaining fluid from the disconnected brake lines as the lines are removed from the vehicle.





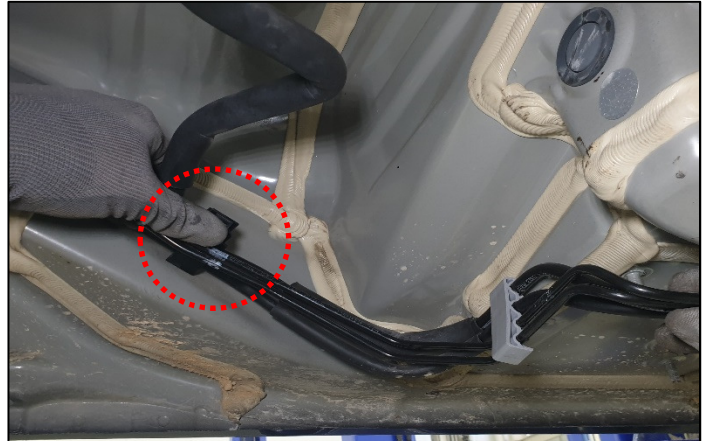
7a. Install the new brake tubes and holders onto the vehicle.

⚠ CAUTION

Do not twist the brake lines during installation.



- 7b. Note the white alignment marks on the brake tubes coincide with the holders in some locations.



8. Connect the brake tubes to the brackets that lead to the rear brake caliper hoses.

TIGHTENING TORQUE

lb.ft	•10.1 - 12.3
kgf.m	•1.4 - 1.7
N.m	•13.7 - 16.7



9. Connect and tighten the flare nuts located at the front of the vehicle.

TIGHTENING TORQUE

lb.ft	•10.1 - 12.3
kgf.m	•1.4 - 1.7
N.m	•13.7 - 16.7



10. Re-install all removed components in reverse order of removal. Refer to the applicable service manual sections for details. If applicable, reprogram the customer's radio presets for AM/FM/XM.
11. Re-fill the brake system with DOT 4 brake fluid and perform the brake bleeding procedure according to the service manual until air is not present in the brake system.
12. Perform a 4-wheel alignment and reset steering angle sensor (SAS) calibration upon completion, referencing the applicable sections of the service manual.
13. The service procedure is now complete.