



# Technical Service Bulletin

GROUP <b>CAMPAIGN</b>	NUMBER <b>21-01-015H</b>
DATE <b>MARCH 2021</b>	MODEL(S) <b>Hyundai Genesis (DH)</b>

**SUBJECT:** HYUNDAI GENESIS (DH) BRAKE TUBE REPLACEMENT (SALT BELT STATES) (SERVICE CAMPAIGN T5W)

## ★ IMPORTANT

### \*\*\* Retail Vehicles \*\*\*

Dealers must perform this Service Campaign whenever an affected vehicle is in the shop for any maintenance or repair.

When a vehicle arrives at the Service Department, access Hyundai Motor America's "Warranty Vehicle Information Screen (VIS)" via WEBDCS to identify open Campaigns.

**Description:** This bulletin describes the procedure to replace the brake tube assemblies for certain 2015MY Hyundai Genesis (DH) vehicles located in the salt belt states. Salt belt states are listed below in **Applicable Vehicles**.





### Applicable Vehicles:

**VERIFY THAT THE VEHICLE IS IDENTIFIED AS AFFECTED BY THE SERVICE CAMPAIGN VIA WEBDCS.**

- 1. Model:** 2015MY Hyundai Genesis (DH) vehicles.
- 2. Production Date Range:** February 21, 2014 – June 30, 2014.
- 3. Areas: Salt belt states are listed below:**  
Connecticut, Delaware, Illinois, Indiana, Iowa, Maine, Maryland, Massachusetts, Michigan, Minnesota, Missouri, New Hampshire, New Jersey, New York, Ohio, Pennsylvania, Rhode Island, Vermont, West Virginia, Wisconsin, and the District of Columbia.

**Parts Information:**

Part Information	Part Number	Remarks
<p align="center"><u>Brake Tube Assy</u></p> 	<p align="center">58730-B1010-QQH</p>	<p align="center">QQH part number includes all required tube and holder assemblies.</p>
<p align="center"><u>DOT 4 Brake Fluid</u></p> 	<p align="center">00232-19053</p>	<p align="center">Two 12-ounce bottles required per vehicle.</p>

**Warranty Information:**

Model	Op. Code	Operation	Op. Time	Causal Part	Nature Code	Cause Code
Genesis (DH)	00D119R0	Brake Tube Replacement	6.5 M/H	58730-B1010-QQH	A42	ZZ6

**NOTE 1:** Submit Claim on Campaign Claim Entry Screen

**NOTE 2:** If a part is found in need of replacement while performing Service Campaign T5W and the affected part is still under warranty, submit a separate claim using the same Repair Order. If the affected part is out of warranty submit a Prior Approval Request for goodwill consideration prior to performing the work.

**NOTE 3:** Op code 00D119R0 includes 4 wheel alignment and steering angle sensor calibration.

**Service Procedure: Brake Tube Replacement**

1. If applicable, record the customer's radio preset stations for AM/FM/XM.

Disconnect the negative battery terminal.

**TIGHTENING TORQUE**

<b>lb.ft</b>	•2.9 - 4.3
<b>kgf.m</b>	•0.4 - 0.6
<b>N.m</b>	•3.9 - 5.9



2. Lift the vehicle and remove the front left, rear left, and rear right wheels.

**TIGHTENING TORQUE**

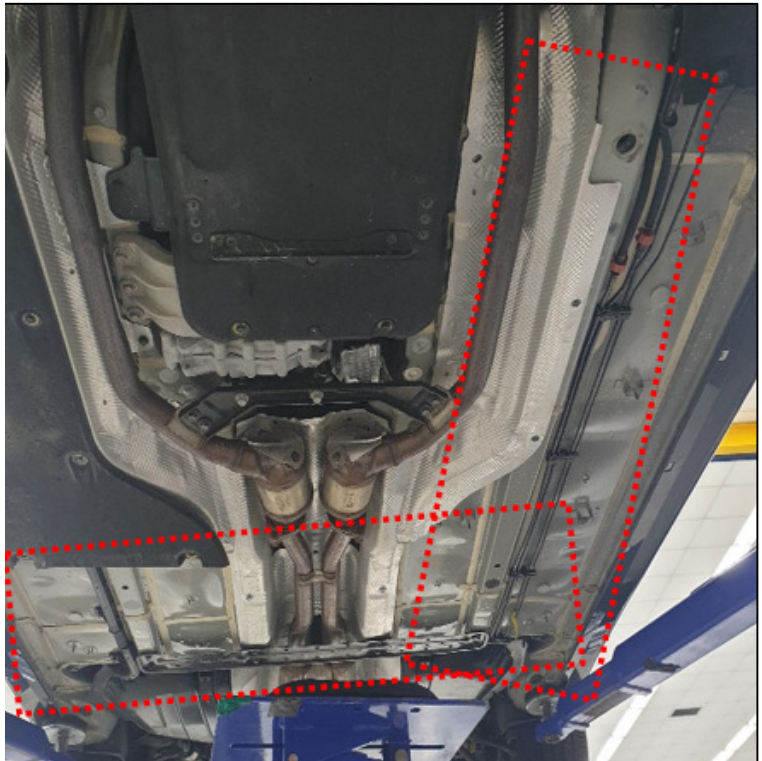
<b>lb.ft</b>	•79.6 - 94.0
<b>kgf.m</b>	•11.0 - 13.0
<b>N.m</b>	•107.9 - 127.5



3. Access the brake lines through the wheel wells by loosening and moving the front left, rear left, and rear right wheel fender liners.



4. Remove the vehicle under covers as shown (front driver's side, and rear left and right covers).



5. Remove the fuel tank and rear cross member assembly by following the service manual procedures listed below:

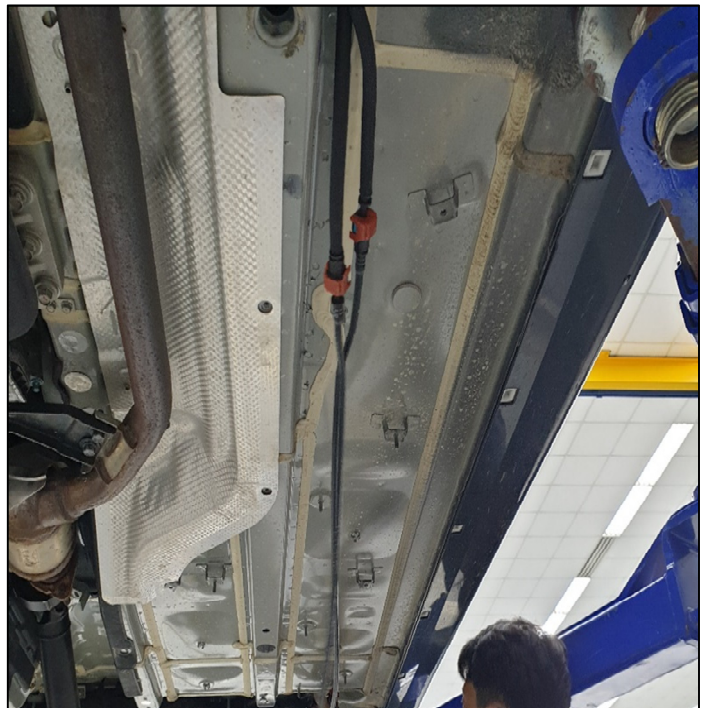
- Engine Control/Fuel System > Fuel Delivery System > Fuel Tank
- Suspension System > Rear Suspension System > Rear Cross Member

6. After removing the fuel tank and rear cross member assembly, remove the brake tubes and the holders from the body.

**CAUTION**

**Wear safety goggles and gloves to prevent skin or eye contact with brake fluid.**

**Use a container to catch any remaining fluid from the disconnected brake lines as the lines are removed from the vehicle.**





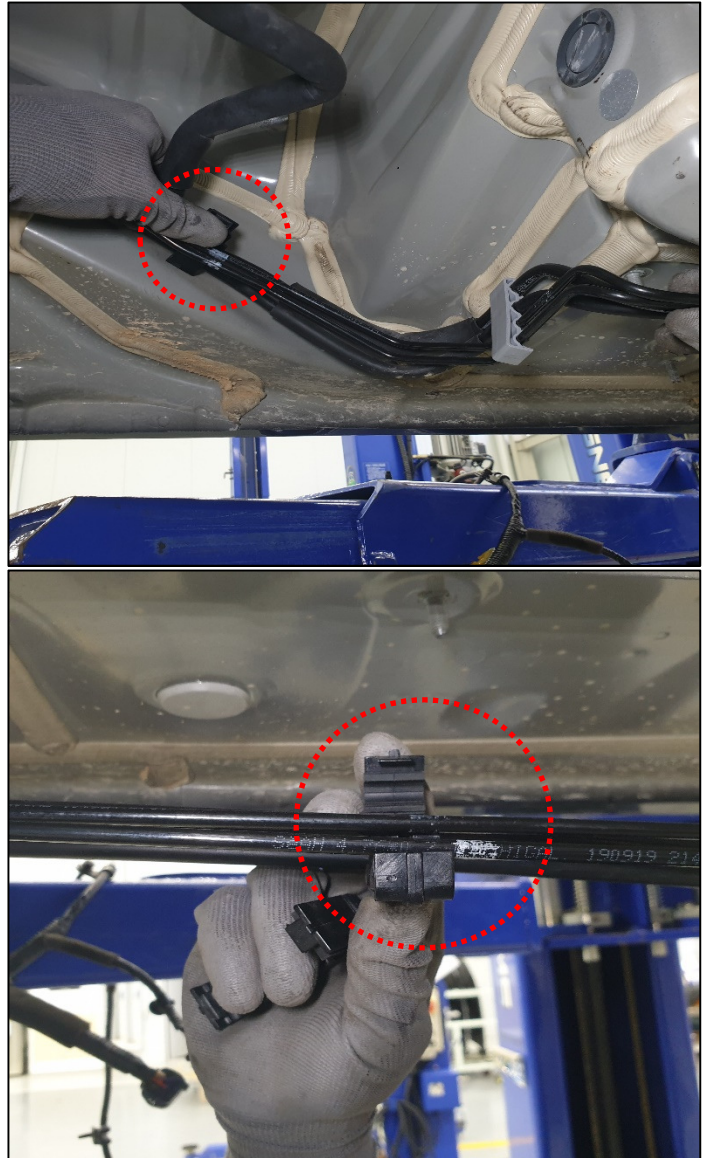
- 7a. Install the new brake tubes and holders onto the vehicle.

**⚠ CAUTION**

**Do not twist the brake lines during installation.**



- 7b. Note the white alignment marks on the brake tubes coincide with the holders in some locations.



8. Connect the brake tubes to the brackets that lead to the rear brake caliper hoses.

**TIGHTENING TORQUE**

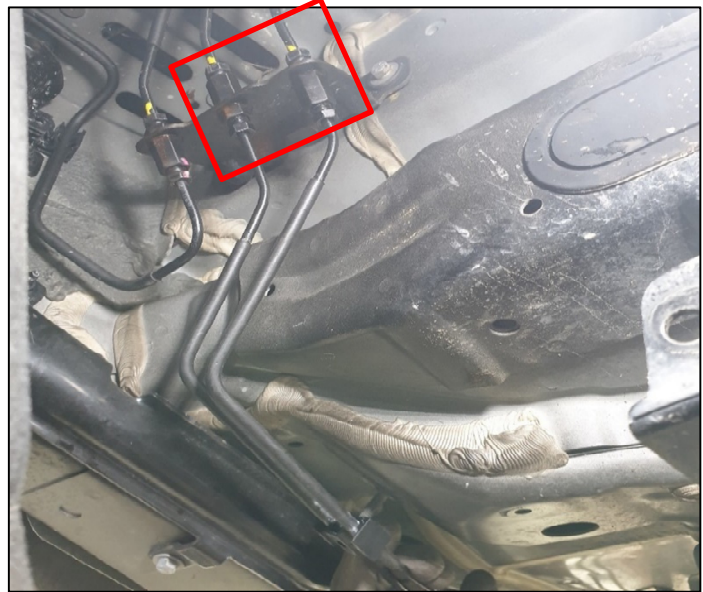
<b>lb.ft</b>	•10.1 - 12.3
<b>kgf.m</b>	•1.4 - 1.7
<b>N.m</b>	•13.7 - 16.7



9. Connect and tighten the flare nuts located at the front of the vehicle.

**TIGHTENING TORQUE**

<b>lb.ft</b>	•10.1 - 12.3
<b>kgf.m</b>	•1.4 - 1.7
<b>N.m</b>	•13.7 - 16.7



10. Re-install all removed components in reverse order of removal. Refer to the applicable service manual sections for details. If applicable, reprogram the customer's radio presets for AM/FM/XM.
11. Re-fill the brake system with DOT 4 brake fluid and perform the brake bleeding procedure according to the service manual until air is not present in the brake system.
12. Perform a 4-wheel alignment and reset steering angle sensor (SAS) calibration upon completion, referencing the applicable sections of the service manual.
13. The service procedure is now complete.