

Subject: SEAT BELT RETRACTS SLOWLY	Bulletin No.: 08-001/21
	Last Issued: 03/08/2021

BULLETIN NOTES

This bulletin supersedes the previously issued bulletin(s) listed below. The changes are noted in Red.

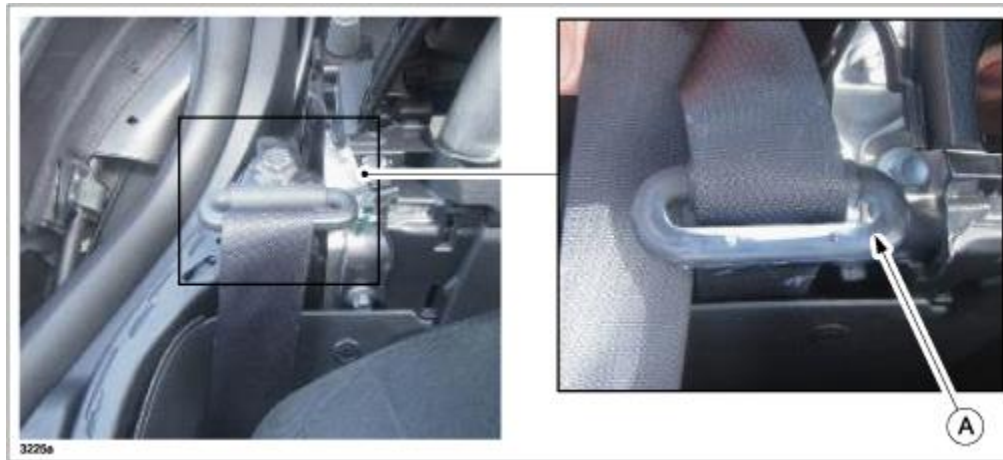
Previous TSBs:	Date(s) Issued:
08-003/16	08/15/16

APPLICABLE MODEL(S)/VINS

2016-**2021** MX-5

DESCRIPTION

Some vehicles may experience a seat belt that retracts slowly. This is caused by the seat belt, seat belt guide and seat belt anchor (A) accumulating dust and dirt from hands and/or from the outside when driving with the top down. An increase in friction makes the seat belt retraction difficult. Keeping the seat belts clean will prevent this from happening.



Customers having this concern should have their vehicle repaired using the following repair procedure.

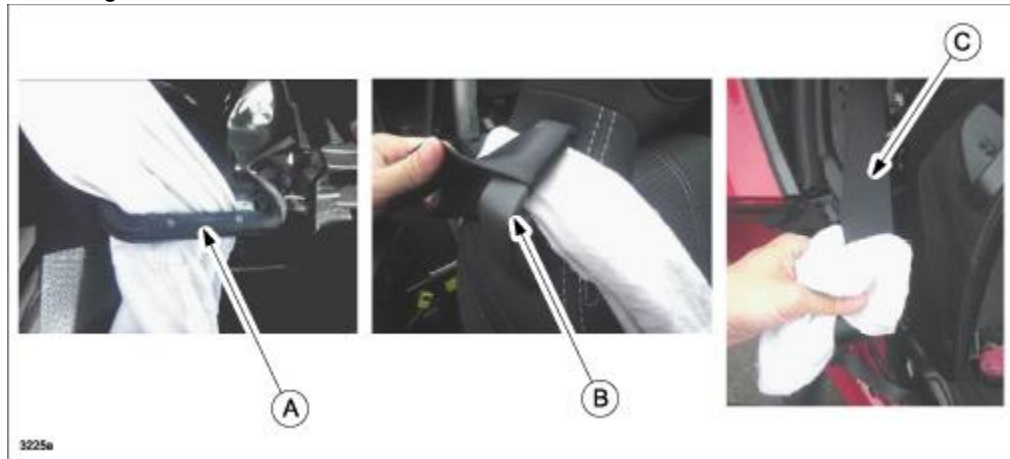
CONSUMER NOTICE: The information and instructions in this bulletin are intended for use by skilled technicians. Mazda technicians utilize the proper tools/equipment and take training to correctly and safely maintain Mazda vehicles. These instructions should not be performed by "do-it-yourselfers." Customers should not assume this bulletin applies to their vehicle or that their vehicle will develop the described concern. To determine if the information applies, customers should contact their nearest authorized Mazda dealership. Mazda North American Operations reserves the right to alter the specifications and contents of this bulletin without obligation or advance notice. All rights reserved. No part of this bulletin may be reproduced in any form or by any means, electronic or mechanical---including photocopying and recording and the use of any kind of information storage and retrieval system ---without permission in writing.

REPAIR PROCEDURE

1. Verify customer concern.
2. Clean the seat belt, belt guide, anchor, etc. of the affected seat belt.

NOTE: Open the convertible top to improve accessibility.

- a. Remove the quarter trim of the affected side according to the instructions on MGSS online (QUARTER TRIM REMOVAL/INSTALLATION).
- b. Remove any dirt, dust and smudges from the seat belt anchor (A), the seat belt guide (B) and the seat belt (C).
- c. **NOTE:** Clean the webbing with a mild soap solution recommended for upholstery or carpets. DO NOT bleach or dye the webbing, as this may weaken it. After cleaning the belts, thoroughly dry the belt webbing and make sure there is no remaining moisture before retracting them.



- d.
- e. Install any removed parts in the reverse order of removal.

3. Verify repair.
4. Advise the customer to keep the seat belt anchors, seat belt guides and the seat belts clean using the Seat Belt Maintenance section in the Owner's Manual.

CONSUMER NOTICE: The information and instructions in this bulletin are intended for use by skilled technicians. Mazda technicians utilize the proper tools/equipment and take training to correctly and safely maintain Mazda vehicles. These instructions should not be performed by "do-it-yourselfers." Customers should not assume this bulletin applies to their vehicle or that their vehicle will develop the described concern. To determine if the information applies, customers should contact their nearest authorized Mazda dealership. Mazda North American Operations reserves the right to alter the specifications and contents of this bulletin without obligation or advance notice. All rights reserved. No part of this bulletin may be reproduced in any form or by any means, electronic or mechanical---including photocopying and recording and the use of any kind of information storage and retrieval system ---without permission in writing.

WARRANTY INFORMATION**NOTE:**

- This warranty information applies only to verified customer complaints on vehicles eligible for warranty repair.
- This repair will be covered under Mazda's Safety Restraint System Limited Warranty.
- Additional diagnostic time cannot be claimed for this repair.
- This TSB can be performed by D329 Mazda Certified Lube Technicians.

Warranty Type	A
Symptom Code	71
Damage Code	9E
Part Number Main Cause / Qty.	7777-SP-M01 / 0
Operation Number / Labor Hours:	XXM4FARX / 0.2 Hrs. (One side) XXM4FBRX / 0.3 Hrs. (Both side)
TSB can be performed by D329 Mazda Certified Lube Technicians:	Yes

CONSUMER NOTICE: The information and instructions in this bulletin are intended for use by skilled technicians. Mazda technicians utilize the proper tools/equipment and take training to correctly and safely maintain Mazda vehicles. These instructions should not be performed by "do-it-yourselfers." Customers should not assume this bulletin applies to their vehicle or that their vehicle will develop the described concern. To determine if the information applies, customers should contact their nearest authorized Mazda dealership. Mazda North American Operations reserves the right to alter the specifications and contents of this bulletin without obligation or advance notice. All rights reserved. No part of this bulletin may be reproduced in any form or by any means, electronic or mechanical---including photocopying and recording and the use of any kind of information storage and retrieval system ---without permission in writing.