	GROUP FUE	MODEL 2022MY Stinger (CK) w/3.3L GDI 8AT
	NUMBER 051	DATE March 2021
TECHNICAL SERVICE BULLETIN		
SUBJECT: SERVICE ACTION: VARIABLE MUFFLER OPERATION LOGIC IMPROVEMENT (SA468)		

This bulletin provides the procedure to update the software logic of the Engine Control Module (ECM) system on some 2022MY Stinger (CK) vehicles equipped with the 3.3L GDI engine and 8AT transmission, produced from January 15, 2021 through February 5, 2021, to improve the variable sound of the muffler in “sport mode”. The exhaust sound in “sport mode” was not properly mapped exhibiting a low and poor sound, especially under “low to moderate” load. Apply the improved logic to the ECM system using the KDS ECU Upgrade function as described in this bulletin. For confirmation that the latest reflash has been applied to a vehicle you are working on, verify the ROM ID using the table on page 3 of this bulletin.



Kia Diagnostic System (KDS)

*** NOTICE**

A Service Action is a repair program without customer notification that is performed during the warranty period. Any dealer requesting to perform this repair outside the warranty period will require DPSM approval.

Repair status for a VIN is provided on WebDCS (Service → Warranty Coverage → Warranty Coverage Inquiry → Campaign Information). Not completed Recall / Service Action reports are available on WebDCS (Consumer Affairs → Not Completed Recall → Recall VIN → Select Report), which includes a list of affected vehicles.

This issue number is SA468.

Printed TSB copy is for reference only; information may be updated at any time.
Always refer to KGIS for the latest information.

- Circulate To: General Manager Service Manager Parts Manager
 Service Advisors Technicians Body Shop Manager Fleet Repair

SUBJECT:

SERVICE ACTION: VARIABLE MUFFLER OPERATION LOGIC IMPROVEMENT (SA468)

ECU Upgrade Procedure:

To correct this condition, the ECU should be reprogrammed using the KDS download, as described in this bulletin.

Upgrade Event Name
542. CK PE 3.3TGDI 8AT VARIABLE MUFFLER SOUND LOGIC IMPROVEMENT


* NOTICE

- Confirm a **fully charged battery with 12.3 volts or higher is necessary or the use of a fully charged jump starter box connected to the battery.**
- **Ensure the KDS GDS is sufficiently charged at 60% or higher prior to reflash.**
- All ECU upgrades must be done with the ignition key in the 'ON' position unless otherwise stated.
- Be careful not to disconnect the VCI-II connected to the vehicle during the ECU upgrade procedure.
- DO NOT start the engine during ECU upgrade.
- **DO NOT turn the ignition key 'OFF' or interrupt the power supply during ECU upgrade.**
- When the ECU upgrade is completed, turn the ignition 'OFF' and wait 10 seconds before starting the engine.
- **ONLY use approved ECU upgrade software designated for the correct application.**

❗ IMPORTANT

It is recommended to ALWAYS check the Electronic Parts Catalog (EPC) to locate the ECU Part Number respective to Auto/Manual Mode ROM IDs. DO NOT reference the parts label affixed to the ECU.

* NOTICE


Before attempting an ECU upgrade on any Kia model, make sure to first determine whether the applicable model is equipped with an immobilizer  security system. Failure to follow proper procedures may cause the PCM to become inoperative after the upgrade and any claims associated with this repair may be subject to chargeback.

SUBJECT:

SERVICE ACTION: VARIABLE MUFFLER OPERATION LOGIC IMPROVEMENT (SA468)

ROM ID INFORMATION TABLE:

Upgrade Event #542

Model	EM	TM	IMMO 	ECU P/No.	ROM ID	
					Previous	New
CK	3.3L GDI	8AT	Yes	39111 3L024	CENNDM_Q_N2A	CENNDM_Q_N2B
				39111 3L025	CENNDM_T_N2A	CENNDM_T_N2B
				39111 3L026	CENNDM_R_N2A	CENNDM_R_N2B
				39111 3L027	CENNDM_U_N2A	CENNDM_U_N2B
				39111 3L028	CENNDM_W_N2A	CENNDM_W_N2B
				39111 3L029	CENNDM_Z_N2A	CENNDM_Z_N2B
				39111 3L030	CENNDM_X_N2A	CENNDM_X_N2B
				39111 3L031	CENNDM_1_N2A	CENNDM_1_N2B

To verify the vehicle is affected, be sure to check the Calibration Identification of the vehicle's ECM ROM ID and reference the Information Table as necessary.

*** NOTICE**

Prior to performing the ECU upgrade, be sure to check that the KDS is fully charged.



SUBJECT:

SERVICE ACTION: VARIABLE MUFFLER OPERATION LOGIC IMPROVEMENT (SA468)

1. Connect the VCI-II to the OBD-II connector, located under the driver's side of the instrument panel.

* NOTICE

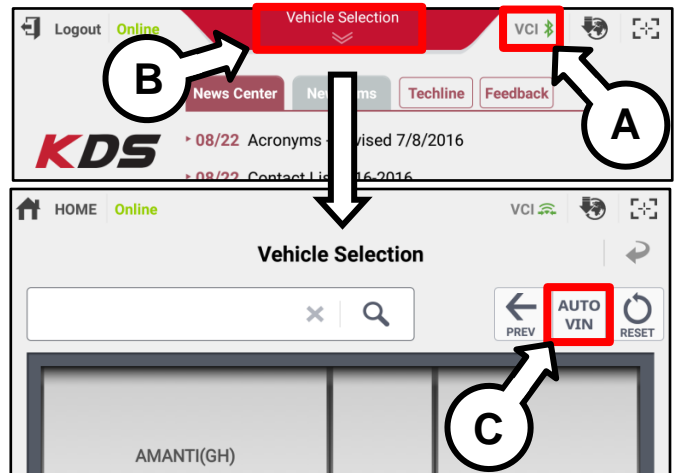
The ECU upgrade function on KDS operates wirelessly. It is not necessary to perform the upgrade via USB cable.



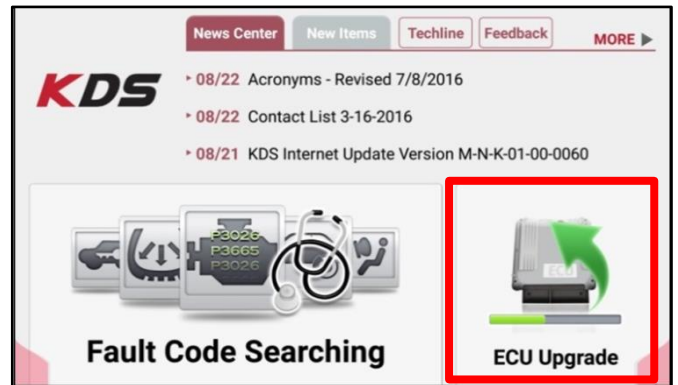
2. With the ignition ON, turn ON the KDS tablet. Select **KDS** from the home screen.



3. Confirm communication with VCI (A) and then configure the vehicle (B) using the **AUTO VIN** (C) feature.



4. Select **ECU Upgrade**.



SUBJECT:

SERVICE ACTION: VARIABLE MUFFLER OPERATION
LOGIC IMPROVEMENT (SA468)

- The KDS will check the server for recently uploaded Events and then automatically download **Upgrade Event #542 (CK)**.

*** NOTICE**

The vehicle must be identified in Vehicle Selection to download an Event for that vehicle.

After the download is complete, the program will shut down to install. Please wait until the program restarts.

Event	Status
271.QF 2.4GDI DTC P0171,P0420 LOGIC IMPROVEMENT	Downloading
273.TF 2.4GDI DTC P0171,P0420 LOGIC IMPROVEMENT	Ready

36%

Do not touch any system buttons while performing this function.

KDS screenshot shown above is for demonstration purposes only. Events shown in screenshot are not applicable to this bulletin.

- Select **Auto Mode**.

CAUTION

Do NOT attempt to perform a Manual Mode upgrade UNLESS Auto Mode fails. Always follow the instructions given on the KDS in either Auto or Manual mode.

Auto Mode Manual Mode

- Select the **Engine** system under the System selection menu.

Touch **ID Check (D)** and confirm that the latest update is available.

Select **Upgrade Event #542**, and select **Upgrade** to continue.

System

ENGINE A/T

ROM ID

Currently in Vehicle #####

Latest Update #####

Event Group TSB

###.XX ----

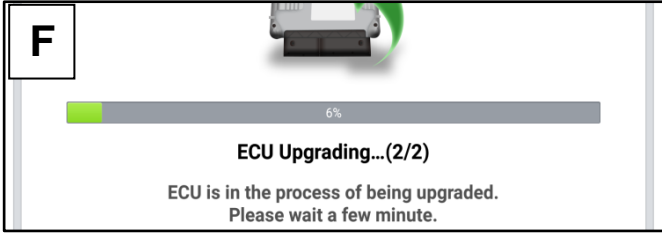
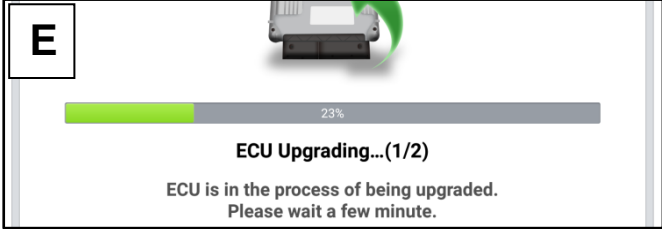
Previous Upgrade

SUBJECT: SERVICE ACTION: VARIABLE MUFFLER OPERATION LOGIC IMPROVEMENT (SA468)

8. The ECU upgrade will begin and the progress of the upgrade will appear on the bar graph. Upgrade part (1/2) (E) will download the upgrade event to the VCI-II. Upgrade part (2/2) (F) will upgrade the ECU.

CAUTION

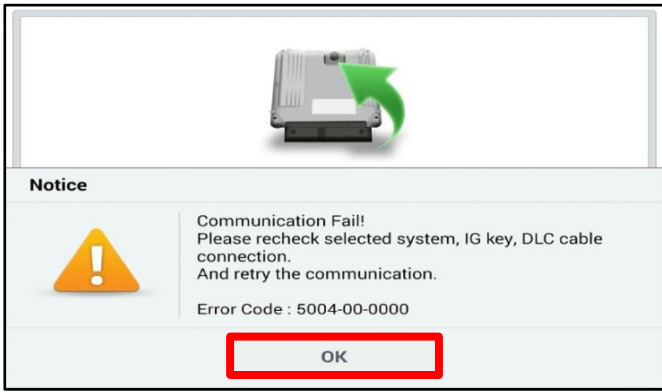
Do not touch the system buttons (like 'Back', 'Home', 'etc.') while performing ECU Upgrade.



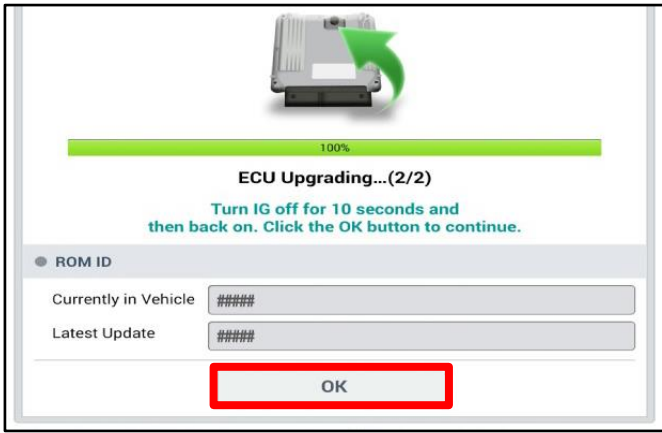
9. If a "Communication Fail" screen appears, verify that the VCI-II and KDS are communicating properly. Touch **OK** and restart the procedure from step 4.

*** NOTICE**

If an error notice continues to appear or if the upgrade cannot be performed, DO NOT disconnect the KDS/VCI-II. Contact GIT America Help Desk at (888) 542-4371 or Techline.



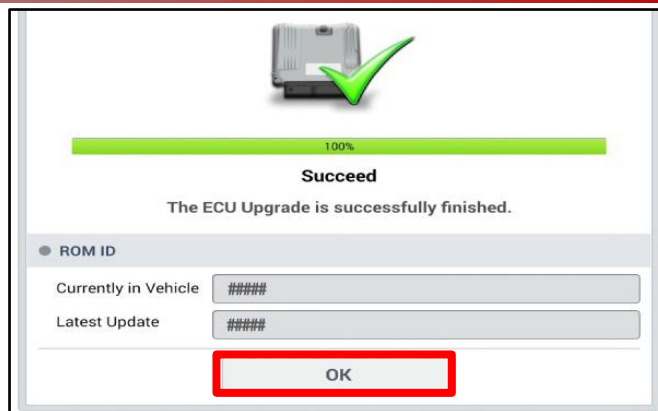
10. When instructed on the KDS, turn the ignition **OFF** for ten (10) seconds then back on. Touch **OK** to continue.



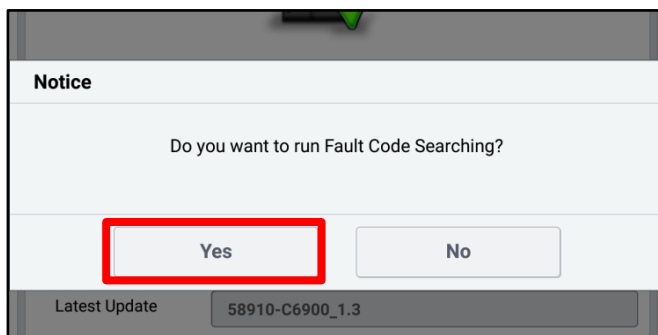
SUBJECT:

SERVICE ACTION: VARIABLE MUFFLER OPERATION
LOGIC IMPROVEMENT (SA468)

- Once the upgrade is complete, touch **OK** to finalize the procedure.



- When prompted, select **YES** to check for Diagnostic Trouble Codes (DTC) and erase any DTCs stored such as EPS, ESC, and TPMS that may have been set during the upgrade.



- Start the engine to confirm proper operation of the vehicle.

Manual Upgrade Procedure:*** NOTICE**

The manual upgrade should ONLY be performed if the automatic upgrade fails.

If the automatic upgrade fails, turn the ignition OFF for about 10 seconds then place it back in the ON position to reset the control unit BEFORE performing manual upgrade.

See table below for Manual Mode passwords.

Manual Mode ECU Upgrade Passwords

Menu	Password
CK PE 3.3TGDI 8AT +IMMO/SMK (NAS) : 39111-3L024	3024
CK PE 3.3TGDI 8AT +IMMO/SMK (NAS) : 39111-3L025	3025
CK PE 3.3TGDI 8AT +IMMO/SMK (NAS) : 39111-3L026	3026
CK PE 3.3TGDI 8AT +IMMO/SMK (NAS) : 39111-3L027	3027
CK PE 3.3TGDI 8AT +IMMO/SMK (NAS) : 39111-3L028	3028
CK PE 3.3TGDI 8AT +IMMO/SMK (NAS) : 39111-3L029	3029
CK PE 3.3TGDI 8AT +IMMO/SMK (NAS) : 39111-3L030	3030
CK PE 3.3TGDI 8AT +IMMO/SMK (NAS) : 39111-3L031	3031

1. Within the ECU Upgrade screen displayed, select **Manual Mode**.
2. Select the **Engine** system under the System selection menu. Select **Upgrade Event #542 (CK)** and select **Upgrade** to continue.
3. Select the appropriate control unit part number with reference to the ROM ID Information Table on page 3, and select **OK**.
4. Enter the appropriate password from the Manual Mode password table above and select **OK**.
5. The upgrade will begin and the progress of the upgrade will appear on the bar graph.
6. When instructed on the KDS, turn the ignition **OFF** for ten (10) seconds then back on. Touch **OK** to continue.
7. Once the upgrade is complete, touch **OK** to finalize the procedure.
8. When prompted, select **YES** to check for Diagnostic Trouble Codes (DTC) and erase any DTCs stored such as EPS, ESC, and TPMS that may have been set during the upgrade.
9. Start the engine to confirm proper operation of the vehicle.

SUBJECT:

SERVICE ACTION: VARIABLE MUFFLER OPERATION
LOGIC IMPROVEMENT (SA468)

AFFECTED VEHICLE RANGE:

Model	Production Date Range
Stinger (CK)	January 15, 2021 to February 5, 2021

WARRANTY INFORMATION:

N Code: N99 C Code: C99

Claim Type	Causal P/N	Qty.	Repair Description	Labor Op Code	Op Time	Replacement P/N	Qty.
V	39111 3L026	0	(SA468) ECM Logic Improvement	210029R0	0.3 M/H	N/A	0

*** NOTICE**

VIN inquiry data for this repair is provided for tracking purposes only. Kia retailers should reference SA468 when accessing the WebDCS system.

