



SIB 51 03 21 TICKING NOISE FROM A-PILLAR AREA

2021-02-10

MODEL

E-Series	Model Description	Production Date
G20	3 Series Sedan	Up to September 30, 2020

SITUATION

A ticking noise is present in the A-Pillar and side mirror area when driving at speeds of approximately 40 MPH. This can occur on either side of the vehicle.

CAUSE

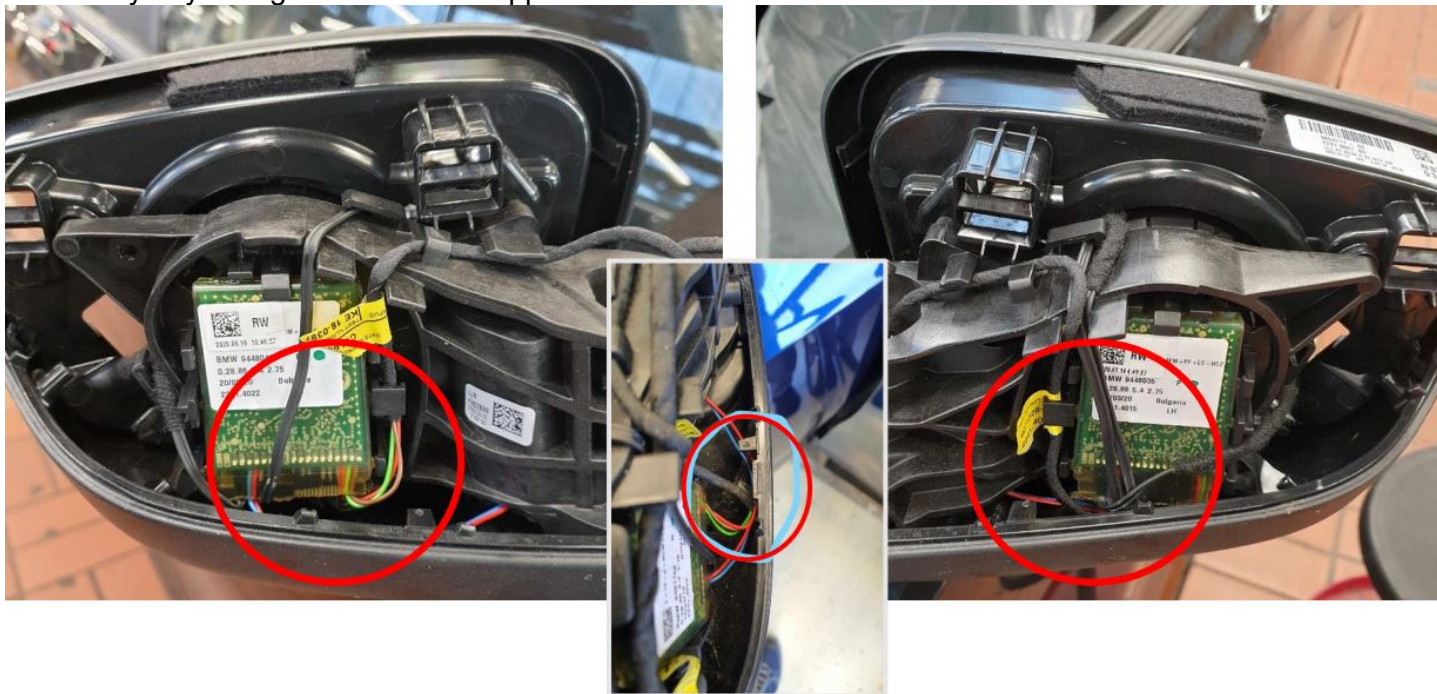
Interference between the mirror wiring harness and the side view mirror cap.

CORRECTION

Insulate the mirror wiring harness.

PROCEDURE

1. Remove the mirror cap of the affected side following repair instructions REP 51 16 041 "Removing and installing/replacing protective cap on left or right outside rearview mirror".
2. Identify any wiring which is not wrapped in felt insulation as shown below:



3. Wrap any unwrapped wiring found in step 2 using an appropriate and available felt tape, such as P/N 61 13 6 920 760.
4. Reinstall the mirror cap and retest the vehicle.

PARTS INFORMATION

Obtain and confirm the part numbers for your specific vehicle by entering the chassis number in either ETK or AIR which takes into account specific equipment and/or options.

Part Number	Description	Quantity
61 13 6 920 760	Polyester-glass mat wrap (W=19 mm/L=7.5 m)	As needed

WARRANTY INFORMATION

Covered under the terms of the BMW New Vehicle Limited Warranty for Passenger Cars and Light Trucks.

Defect Code:	5116003900	Exterior mirror covers Unpleasant noises
---------------------	-------------------	---

Repairing one side

Labor Operation	Description	Labor Allowance
51 16 041	Removing and installing/replacing protective cap on left or right outside rearview mirror (Main work)	Refer to AIR
Or:		
51 16 541	Removing and installing/replacing protective cap on left or right outside rearview mirror (Plus work)	Refer to AIR
Or:		
51 99 000	Work time to rewrap any unwrapped wiring found with felt tape (One side)	1 FRU

If you are using a Main labor code for another repair, use the Plus code labor operation 51 16 541 instead of 51 16 041.

Or:

Repairing both sides

Labor Operation	Description	Labor Allowance
51 16 043	Removing and installing/replacing the cover cap on the outside rearview mirror, left and right (Main work)	Refer to AIR
Or:		
51 16 543	Removing and installing/replacing the cover cap on the outside rearview mirror, left and right (Plus work)	Refer to AIR
Or:		
51 99 000	Work time to rewrap any unwrapped wiring found with felt tape (Both sides)	2 FRU

If you are using a Main labor code for another repair, use the Plus code labor operation 51 16 543 instead of 51 16 043.

Refer to AIR for the corresponding flat rate unit (FRU) allowances.

And, as needed:

Sublet – Bulk Materials (RO and Claim Comments Required)

Sublet Code 4	See the sublet reimbursement calculations below	Reimbursement for the repair-related bulk material (Do not use the BMW part number for claim submission)
--------------------------------	---	--

Sublet reimbursement calculation for claiming the applicable repair-related bulk material (BMW part number) is at the dealer net price amount for the quantity used plus your center's handling.

Enter this material cost in sublet and itemize the amount on the repair order and in claim comment section.

As applicable to your center, please refer to **SI B01 01 20** or **B01 07 20** for claiming your diagnosis work time, job/repair work time (WT), RO/Claim WT and/or repair explanation procedures, unless otherwise required by State law.

QUESTIONS REGARDING THIS BULLETIN

Technical inquiries	Submit feedback at the top of this bulletin
Warranty inquiries	Please contact the Warranty department by either using the Live Chat that's available in the Warranty Documentation Portal or through IDS by selecting Coverage, Policy, Coding Questions and Mileage Corrections.
Parts inquiries	Submit an IDS ticket to the Parts Department