

Subject Power Slide Door Sensor Assembly Poor Appearance		Market USA
Service Category Vehicle Exterior	Section Door/Hatch	
Applicability 2021 Sienna		

APPLICABLE VEHICLES

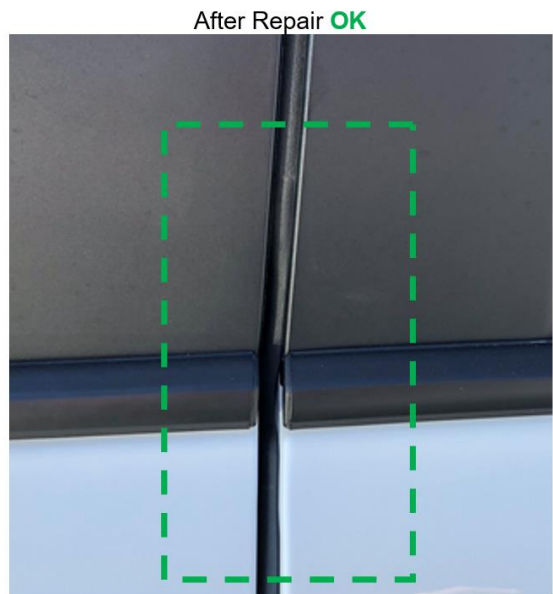
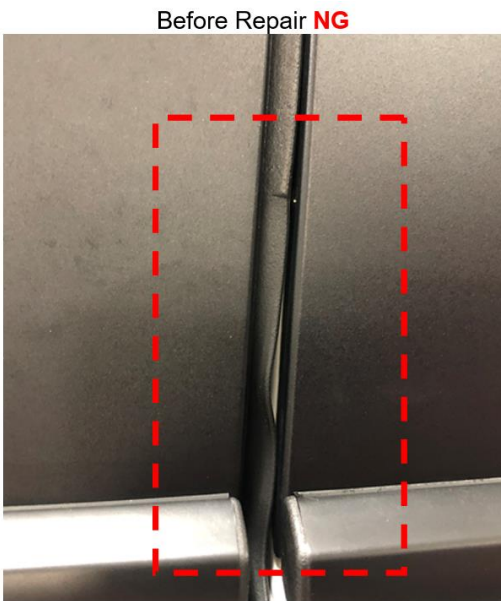
2021	Sienna HV
------	-----------

CONDITION

Some 2021 model year Sienna vehicles may exhibit a condition where the power slide door sensor assembly has a wavy or poor appearance.

RECOMMENDATIONS

The most likely cause of this issue is related to vehicle assembly condition at the manufacturing plant. Before replacing the sensor assembly, remove the sensor from its attachment point and attempt to shape the rubber by hand in the area of concern. Re-install the sensor and confirm if re-shaping the rubber has improved the condition. See reference photo example below for visual confirmation. If the sensor assembly still has a wavy or poor appearance, replace the sensor assembly.



LINK REFERENCES

- [DOOR / HATCH: POWER SLIDE DOOR TOUCH SENSOR: REMOVAL; 2021 MY Sienna HV \[11/2020 - ???????\]](#)
- [DOOR / HATCH: POWER SLIDE DOOR TOUCH SENSOR: INSTALLATION; 2021 MY Sienna HV \[11/2020 - ???????\]](#)