

Whine or Grind Noise From the Transmission

Service Category Drivetrain

Section Automatic Transmission/Transaxle

Market USA

Toyota Supports
 ASE Certification 

Applicability

| YEAR(S) | MODEL(S) | ADDITIONAL INFORMATION |
|---------|------------|---|
| 2021 | Avalon | VDS(s): AZ1FB, BZ1FB, CZ1FB, DZ1FB, EZ1FB, FZ1FB, GZ1FB, HZ1FB, JZ1FB |
| 2021 | Camry | VDS(s): FZ1AK, KZ1AK |
| 2021 | Highlander | |

Introduction

Some 2021 model year Avalon, Highlander, and Camry vehicles equipped with UA80E or UA80F transmissions may exhibit a whine or grind noise from the transmission. This condition may be caused by an issue with the front carrier assembly pinion shafts. Follow the Repair Procedure in this bulletin to address this condition.

Production Change Information

- This bulletin ONLY applies to vehicles equipped with a UA80E* or UA80F** transmission.
- This bulletin applies to vehicles produced BETWEEN the serial ranges shown below.

| PLANT | MODEL | SERIAL NO. RANGE |
|-------|------------|---------------------------|
| TMMWV | Avalon | A3A20L00101 – A3A20L01041 |
| | | A4A20L00100 – A4A20L01032 |
| | Highlander | A3A20L00100 – A3A20L01831 |
| | | A4A20L00101 – A4A20L01824 |
| AISIN | Camry | 20J7A25301 – 20J7A25984 |
| | | 20K7A01603 – 20K7A08269 |
| | | 20L7A01163 – 20L7A01239 |

*Avalon, Highlander 2WD, and Camry.

**Highlander 4WD.

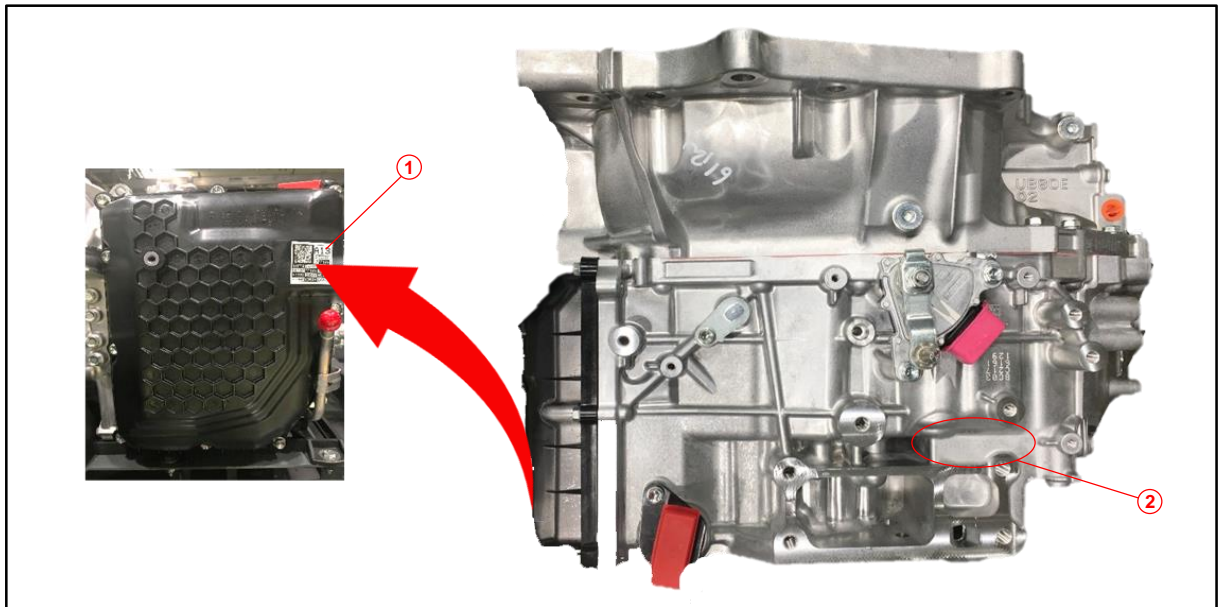
Whine or Grind Noise From the Transmission

Serial Number Location

Confirmation Effective Serial Number

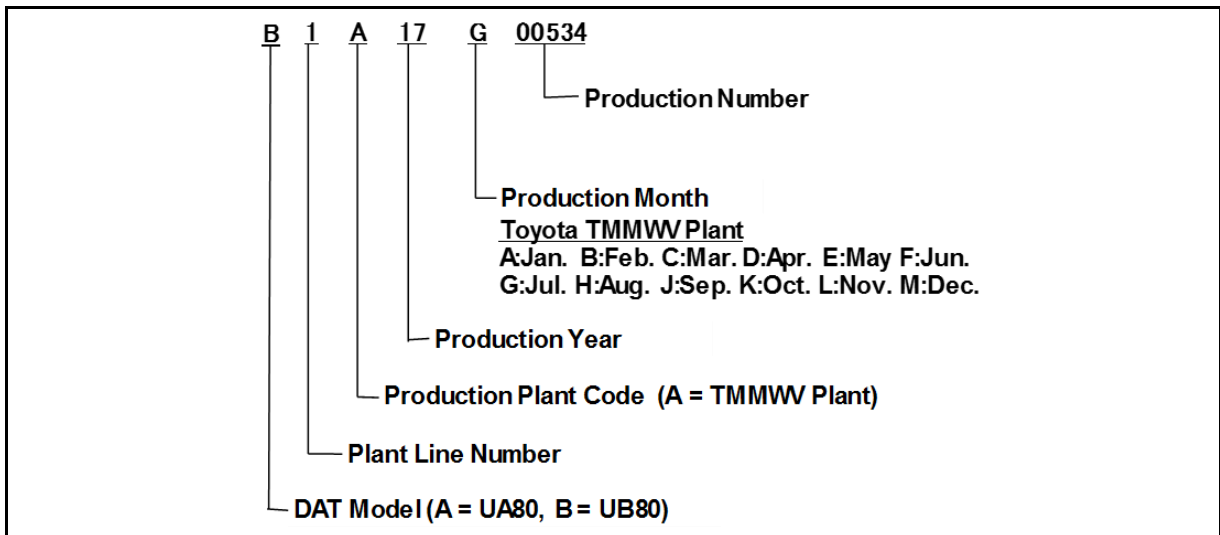
1. Locate the transaxle serial number, found on the sticker located on the transaxle assembly side cover or on the engraved location as shown. A serial number decoder is also provided below.

Figure 1. Serial Number Sticker and Engraved Serial Number Location



| | |
|----------|---------------------------------|
| 1 | Serial Number Sticker |
| 2 | Engraved Serial Number Location |

Figure 2. TMMWV Plant Serial Number Decoder

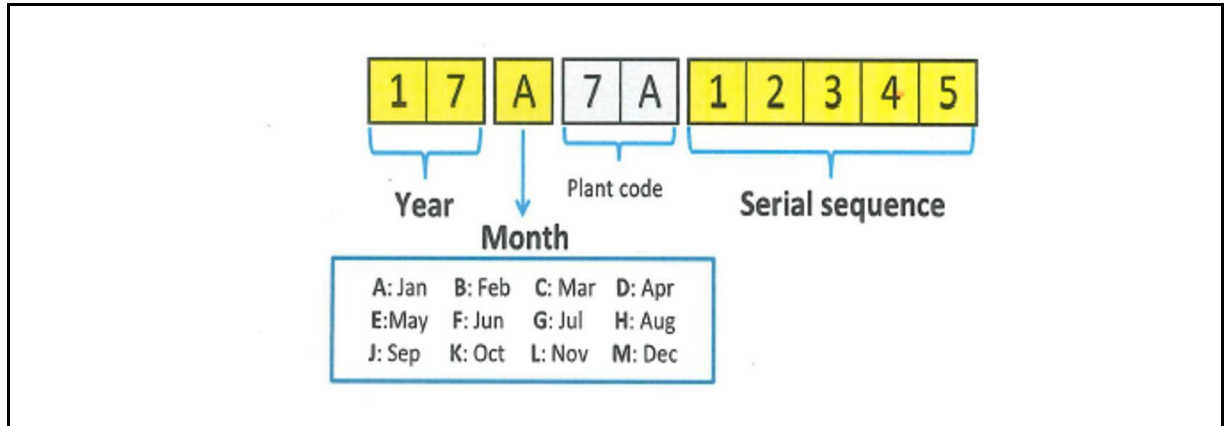


Whine or Grind Noise From the Transmission

Serial Number Location (continued)

Confirmation Effective Serial Number (continued)

Figure 3. AW-J Plant Serial Number Decoder



Warranty Information

| MODEL | OP CODE | DRIVE TYPE | DESCRIPTION | TIME | OFFP | T1 | T2 |
|---------------------------|---------|------------|--|------|-------------|----|----|
| Avalon | 369011 | – | R & R Transaxle Assembly, Automatic | 7.6 | 30500-06080 | 91 | 99 |
| Highlander | | 4WD | | 8.9 | 30500-0E160 | | |
| | | 2WD | | 7.3 | 30500-0E100 | | |
| Camry | | – | | 7.1 | 30500-33A01 | | |
| Avalon, Highlander, Camry | Combo K | – | Transaxle Assembly Add: Air Conditioning | 0.8 | – | | |

APPLICABLE WARRANTY

- This repair is covered under the Toyota Powertrain Warranty. This warranty is in effect for 60 months or 60,000 miles, whichever occurs first, from the vehicle's in-service date.
- Warranty application is limited to occurrence of the specified condition described in this bulletin.

Whine or Grind Noise From the Transmission

Parts Information

| MODEL | DRIVE TYPE | PART NUMBER | | PART NAME | QTY |
|------------|------------|-------------|----------------|-------------------------------|-----|
| | | PREVIOUS | NEW | | |
| Avalon | – | 30500-06080 | 30510-33861-84 | Transaxle Assembly, Automatic | 1 |
| Highlander | 4WD | 30500-0E160 | | | 1 |
| | 2WD | 30500-0E100 | | | 1 |
| Camry | – | 30500-33A01 | 30510-33861-84 | | 1 |

Required Tools & Equipment

| REQUIRED EQUIPMENT | SUPPLIER | PART NUMBER | QTY |
|-------------------------------|----------|--------------|-----|
| Techstream ADVi* | ADE | TSADVUNIT | 1 |
| Techstream 2.0 | | TS2UNIT | |
| Techstream Lite | | TSLITEPDLR01 | |
| Techstream Lite (Green Cable) | | TSLP2DLR01 | |

*Essential SST.

NOTE

- Only ONE of the Techstream units listed above is required.
- Software version 15.30.027 or later is required.
- Additional Techstream units may be ordered by calling Approved Dealer Equipment (ADE) at 1-800-368-6787.

Whine or Grind Noise From the Transmission

Repair Procedure

1. Confirm the vehicle exhibits one or both of the following noises from the transmission.

- [Whine Noise Example](#)
- [Grind Noise Example](#)

Does the vehicle exhibit one or both noises?

- **YES** — Continue to step 2.
- **NO** — This bulletin does NOT apply. Continue diagnosis using the applicable Repair Manual.

2. Is the vehicle equipped with a transmission built between the range shown in the Production Change Information section?

- **YES** — Continue to step 3.
- **NO** — This bulletin does NOT apply. Continue diagnosis using the applicable Repair Manual.

3. Replace the transmission.

Refer to TIS, applicable model and model year Repair Manual:

- 2021 Avalon:
Drivetrain – Automatic Transmission/Transaxle – “UA80E (Automatic Transmission / Transaxle): Automatic Transaxle Assembly: [Removal](#) / [Installation](#)”
- 2021 Highlander (2WD):
Drivetrain – Automatic Transmission/Transaxle – “UA80E (Automatic Transmission / Transaxle): Automatic Transaxle Assembly: [Removal](#) / [Installation](#)”
- 2021 Highlander (4WD):
Drivetrain – Automatic Transmission/Transaxle – “UA80F (Automatic Transmission / Transaxle): Automatic Transaxle Assembly: [Removal](#) / [Installation](#)”
- 2021 Camry:
Drivetrain – Automatic Transmission/Transaxle – “UA80F (Automatic Transmission / Transaxle): Automatic Transaxle Assembly: [Removal](#) / [Installation](#)”

4. Using Techstream, check and clear ANY DTCs.

5. Test-drive the vehicle and confirm the condition no longer exists.