



Technical Journal

TITLE:

XC40 BEV rims, front and rear wheel position

REF NO: TJ 35806.1.0	ISSUING DEPARTMENT: Technical Service	CAR MARKET: United States and Canada	
PARTNER: 3 US 7510 Volvo Car USA		ISSUE DATE: 2020-12-22	STATUS DATE: 2021-01-08
FUNC GROUP: 7713	FUNC DESC: Trailing wheel	Page 1 of 5	

“Right first time in Time”

Attachment

File Name	File Size
TJ 35806 -1 - Front Rim 19 inch.jpg	0.1180 MB
TJ 35806 -2 - Rear Rim 19 inch.jpg	0.1151 MB
TJ 35806 -3 - Front Rim 20 inch.jpg	0.0653 MB
TJ 35806 -4 - Rear Rim 20 inch.jpg	0.1215 MB
TJ 35806 -5 - Rim width.jpg	0.0383 MB
TJ 35806 -6 - Tire label 20 inch.jpg	0.0596 MB

DESCRIPTION:

If changing wheels on a XC40 P8 (Recharge Pure Electric) it is important to fit the correct wheels on the front and rear axle.

XC40 P8 use staggered wheels for better driving performance, the rear rims are 25 mm wider and rear tires are 20 mm wider in comparison to the front wheels.

CSC Customer Symptom Codes

Code	Description
3D	Accessory installation/Accessory installation
X5	Wheel rim/Incorrect installation

Vehicle Type

Type	Eng	Eng Desc	Sales	Body	Gear	Steer	Model Year	Plant	Chassis range	Struc Week Range
536	ED	E400V6					2021-9999		0439208-9999999	202037-999952



SERVICE:

When fitting the rims on XC40 P8, please ensure the correct wheels are being used, the wider wheels must be installed in the rear.

Also check the attached pictures how to identify the rim size.

Rim size and location	Rim offset	Rim width	Tyre dimension	
19" Front	50.5 mm	7.5 inch / 190 mm	235/50R19	Picture 1
19" Rear	56.0 mm	8.5 inch / 216 mm	255/45R19	Picture 2
20" Front	50.5 mm	8 inch / 203 mm	235/45R20	Picture 3
20" Rear	58.0 mm	9 inch / 228 mm	255/40R20	Picture 4

Proposal: Write “front” or “rear” inside the rim spokes using a white or silver permanent marker pen. Possibly also cover the text with a thin layer of clear coat.

This information is also available in Owners Manual:

Go to URL volvocars.com/###/support/manuals/xc40-recharge-pure-electric/2020w37/ Replace ## with your language code (example NL), then select Section 16 (Wheels and tires), click on “Approved wheel and tire dimensions”.

Owners Manual for USA/Canada:

Under section ‘Wheels and tires’ -> ‘Changing a wheel’ -> ‘Changing a wheel’ -> ‘Installing a wheel’ (step 2)

Under section ‘Wheels and tires’ -> ‘Tires’ -> ‘Tire direction of rotation’

The information is also available in:

- VIDA Parts Catalogue, check VIDA VCC-ID : P-031607701075-3 (19” rims, VIDA Picture #9), P-031607701085-3 (20” rims, VIDA Picture #5).
- Tire label, the correct tire dimensions are printed on the tire label, fitted on the B-pillar (driver’s side).

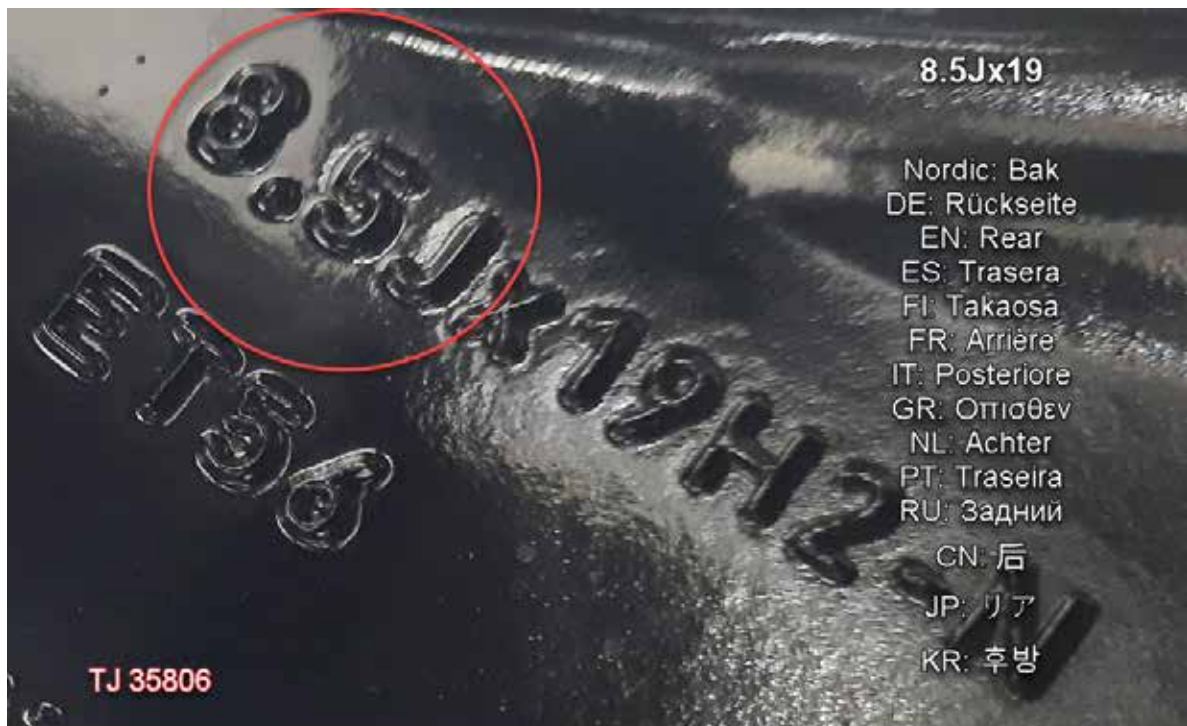
Warranty claim info:

No warranty claims are accepted for this TJ.

VEHICLE REPORT:

Yes, please submit a Vehicle Report if the service solution described in this TJ has no effect. Use concern area “Vehicle Report” and sub concern area “Support not needed”, use function group 7713.

To view TJ attachment continue to next page. This TJ has six attachments.













TJ 335806



TJ 35806 - 20"

	 XC40	 km/h	 kPa (psi)	 kPa (psi)	 kPa (psi)
	235/45R20	0-180	280(41)	280(41)	280(41)
	255/40R20		280(41)	280(41)	280(41)
	-	0-80	-	-	-

VOLVO 32241533